

CORPORATE LAKES

MARKET
NORTHEAST/I-85

1665 Lakes Parkway Suite 110
Lawrenceville, GA, 30043



FOR LEASE

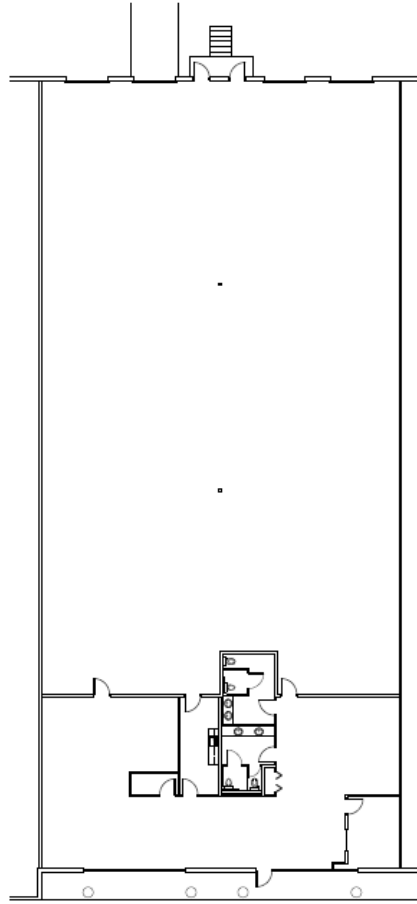
Suite 110

±11,226 SF



LEASED BY





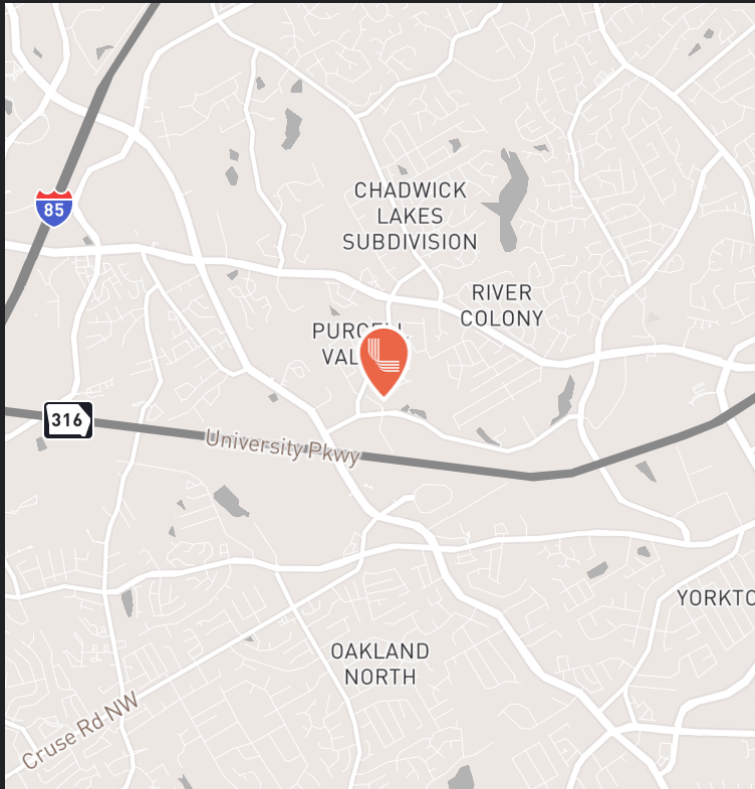
1 Suite Layout
 SC-1 Scale: N.T.S.



Parkway, Lawrenceville, GA 30043

As Built • 1665 Lakes Parkway, Suite 110 • Office 2,446 SF - 11,226 SF Total

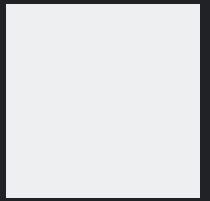
Date: 12.09.25 | Drawn By: O.Niles | Project No:



BUILDING SPECIFICATIONS

Total Size	11,226 SF
Office	2,446 SF
Clear Height	20'
Column Spacing	35' x 40'
Sprinkler System	Wet
Loading	Three (3) dock-high doors One (1) drive-in door

CONTACT INFORMATION



1665 Lakes Parkway, Suite 110
Lawrenceville, GA 30043

Tripp Ausband

tausband@seefriedproperties.com
(770)- 825-3391

Joseph Kriss

jkriess@seefriedproperties.com
(678) 904-1910

This document is for informational purposes only and does not constitute an offer or acceptance of a lease. Any lease agreement must be in writing and signed by the landlord. No representations or warranties are made except as expressly stated in a signed lease. Information is provided "as is" and may be subject to errors or change without notice.



LEASED BY

