

# FOR LEASE | BUILDING 4

6015 N CLASSEN BLVD  
OKLAHOMA CITY, OK 73116



COMMERCIAL  
OKLAHOMA



**LEASE  
RATE:**  
\$21.00 NNN

## PROPERTY HIGHLIGHTS

Located south of NW 63rd & east of Classen Blvd, Building 4 is located on Expand Campus. The area is quickly densifying with new high-density multifamily and hotel development within walking distance to OKC's most upscale shopping centers, The Triangle at Classen Curve, Classen Curve and Nichols Hills Plaza.

## CLASS "A" OFFICE FOR LEASE

- **BUILDING SIZE:** ± 45,541 SF
  - BASEMENT:** ± 9,108 SF
  - 1<sup>ST</sup> FLOOR:** ± 9,108 SF
  - 2<sup>ND</sup> FLOOR:** ± 9,108 SF
  - 3<sup>RD</sup> FLOOR:** ± 9,108 SF
  - 4<sup>TH</sup> FLOOR:** ± 9,108 SF
- **OFFICE COUNT:** 110
- **PARKING RATIO:** 5.53 /1,000
- **CAR PARKS:** 533

CONTACT  
US

VIVIENNE VOGLER  
**+1 405 570 8595**  
vvogler@commercialoklahoma.com

MICAH SHERMAN  
**+1 405 488 5548**  
msherman@commercialoklahoma.com

TRAVIS MASON  
**+1 405 249 0655**  
tmason@commercialoklahoma.com

# FOR LEASE I BUILDING 4

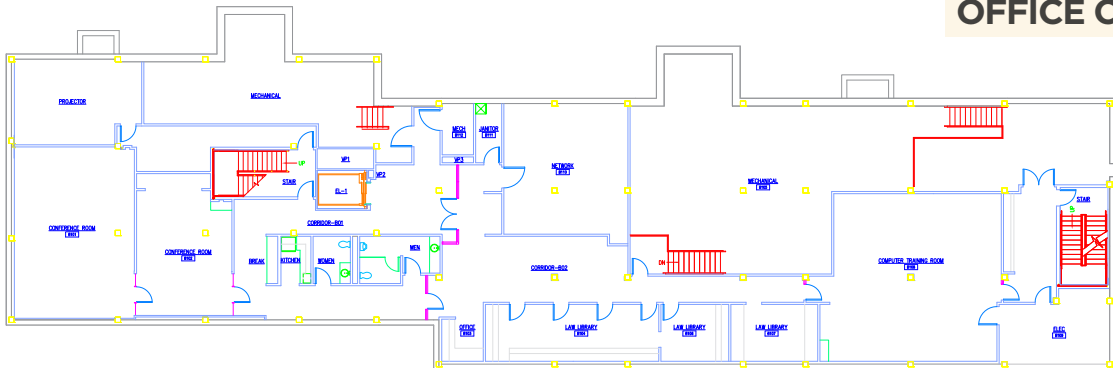
6015 N CLASSEN BLVD  
OKLAHOMA CITY, OK 73116



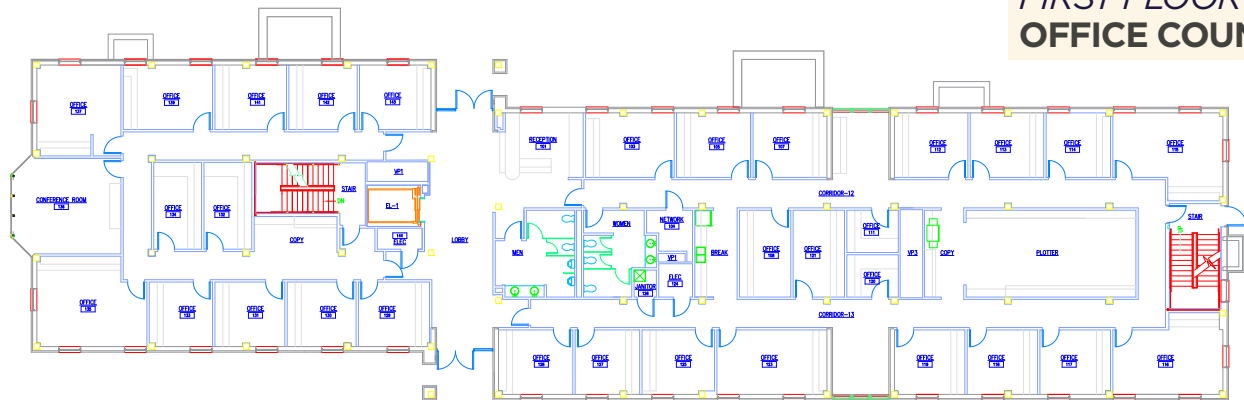
COMMERCIAL  
OKLAHOMA

## FLOOR PLANS

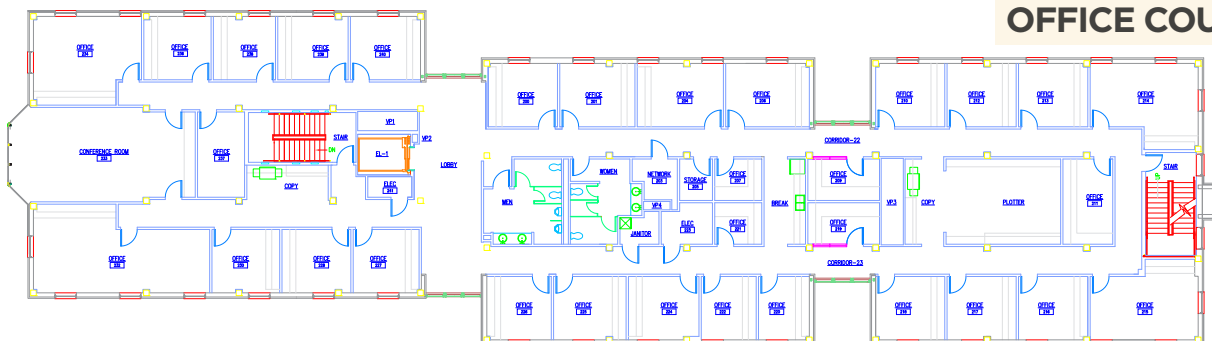
**BASEMENT**  
**OFFICE COUNT: 1**



**FIRST FLOOR**  
**OFFICE COUNT: 31**



**SECOND FLOOR**  
**OFFICE COUNT: 32**



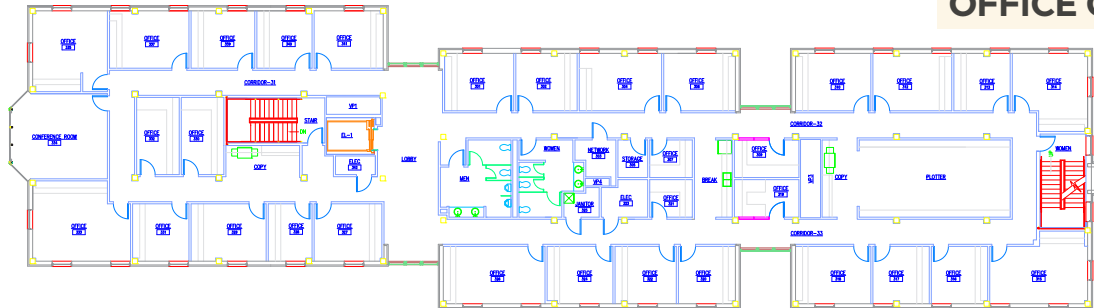
# FOR LEASE | BUILDING 4

6015 N CLASSEN BLVD  
OKLAHOMA CITY, OK 73116

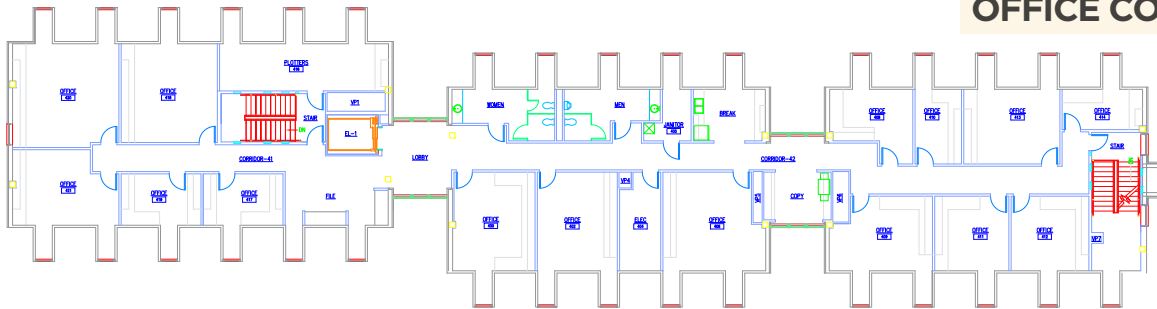


## FLOOR PLANS

**THIRD FLOOR**  
**OFFICE COUNT: 32**



**FOURTH FLOOR**  
**OFFICE COUNT: 15**



## CONTACT US

VIVIENNE VOGLER  
**+1 405 570 8595**  
vvoogler@commercialoklahoma.com

MICAH SHERMAN  
**+1 405 488 5548**  
msherman@commercialoklahoma.com

TRAVIS MASON  
**+1 405 249 0655**  
tmason@commercialoklahoma.com

**OKLAHOMA CITY**

204 N Robinson Ave, Suite 2000, Oklahoma City, OK 73102  
+1 405 563 5000  
[commercialoklahoma.com](http://commercialoklahoma.com)

©2024 Cushman & Wakefield | Commercial Oklahoma. Independently Owned and Operated / A Member of the Cushman & Wakefield Alliance All rights reserved. The information contained in this communication is strictly confidential. This information has been obtained from sources believed to be reliable but has not been verified. No warranty or representation, express or implied, is made as to the condition of the property (or properties) referenced herein or as to the accuracy or completeness of the information contained herein, and same is submitted subject to errors, omissions, change of price, rental or other conditions, withdrawal without notice, and to any special listing conditions imposed by the property owner(s). Any projections, opinions or estimates are subject to uncertainty and do not signify current or future property performance.