

FOR LEASE OR FOR SALE

650-656 N ROBERTSON BLVD

WEST HOLLYWOOD





PROPERTY DETAILS -

CBRE is pleased to present 650-656 N Robertson Blvd for lease or purchase. 650-656 N Robertson Blvd offers the rare opportunity to be part of one of the most vibrant blocks in West Hollywood's Design District. Located in close walking distance to the Pacific Design Center, Craig's, Catch, Olivetta and Cecconi's, 650 N Robertson Blvd is an exceptional opportunity for both retailers and office occupiers looking to be in one of Los Angeles' most dynamic neighborhoods.

HIGHLIGHTS -

- 2 buildings totaling to approximately \pm 7,580 RSF
- Additional 11,243 SF surface parking lot located next door at 656 N Robertson Blvd
- Private rooftop deck overlooking the West Hollywood Park
- Secured building
- Can entertain office, retail and showroom use
- Ask Rate - \$4.95 NNN
- Sale Price - Call for details



FLOOR PLANS

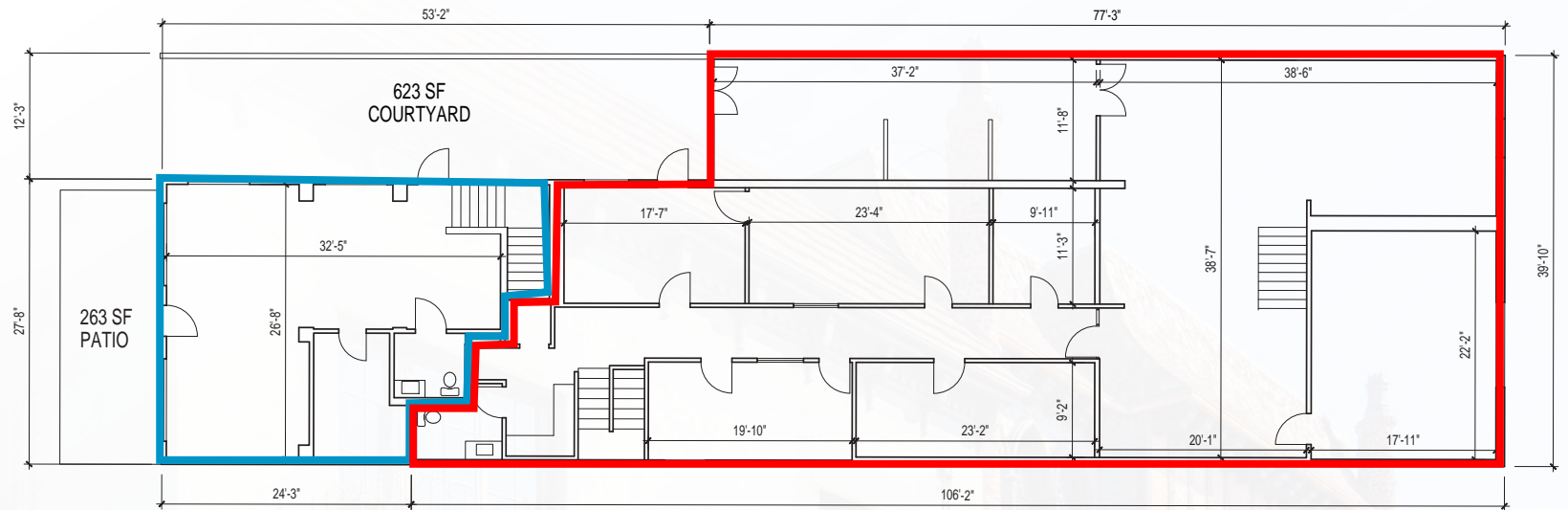
Building A - 1,853 SF

Building B - 5,727 SF

Ground Floor

Building A - 905 SF

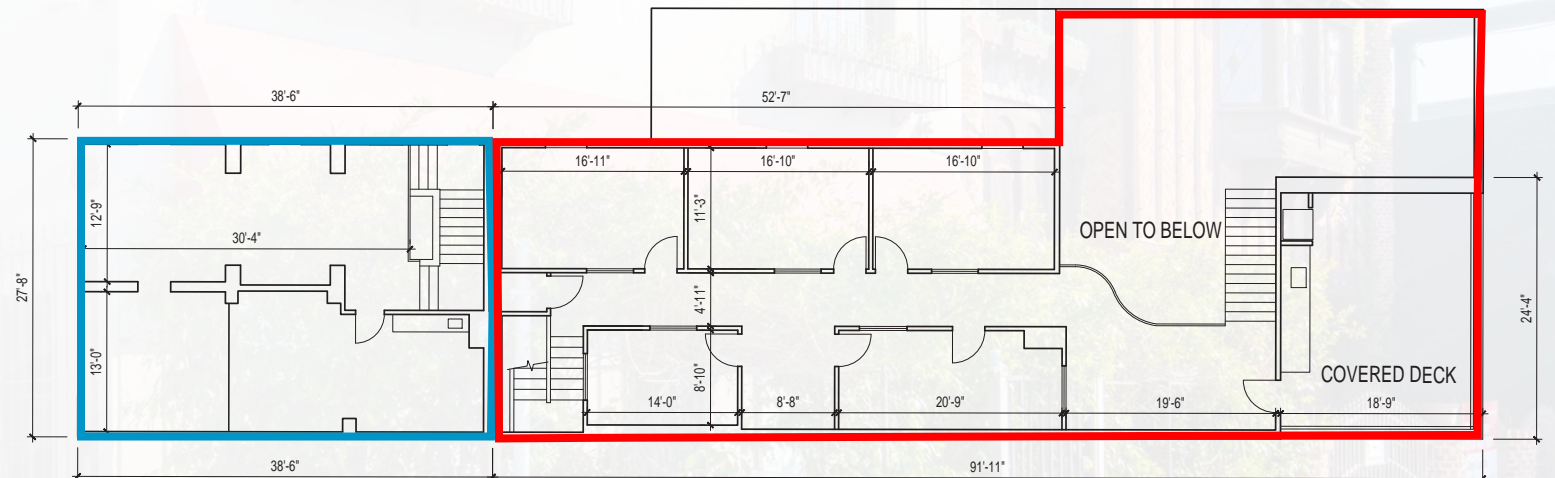
Building B - 3,646 SF



Second Floor

Building A - 948 SF

Building B - 2,081 SF





BUILDING A -

- Approximately ± 1,853 RSF
- Ideal for retail or office use.
- 2 floors with plenty of open area, 2 enclosed rooms, kitchenette, and a private restroom.
- Includes a gated patio facing Robertson Blvd.



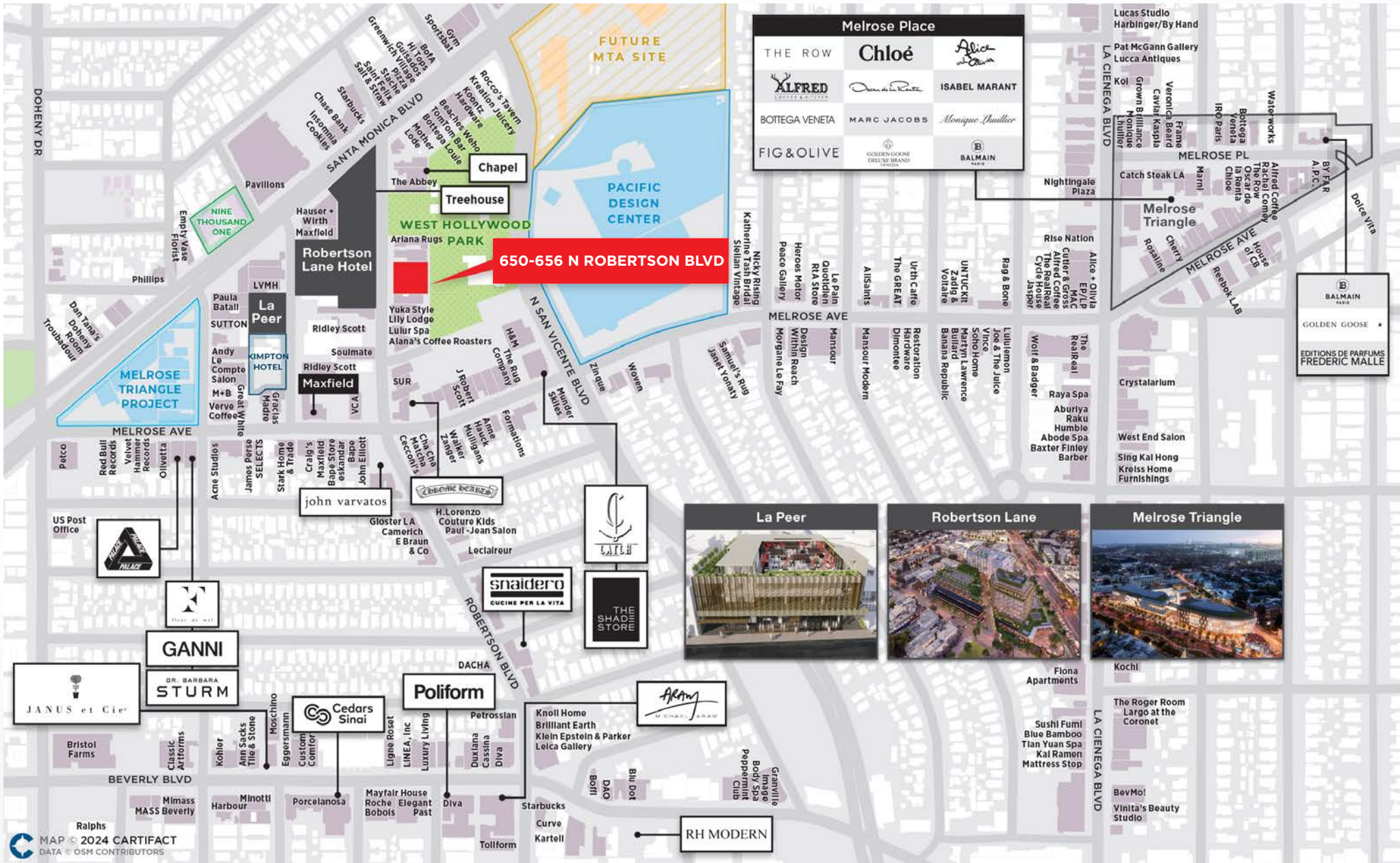


BUILDING B -

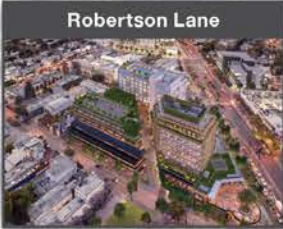
- Approximately ± 5,727 RSF
- Ideal for office or showroom use.
- Downstairs includes a 14+ person conference room, 4 interior large rooms, reception, kitchenette, private restroom and a large bullpen that is double height with skylights.
- Upstairs includes 4 large offices, 1 conference room and a usable rooftop deck overlooking West Hollywood Park, equipped with a sink and full height refrigerator.

AERIAL





Melrose Place		
THE ROW	Chloé	Alice
ALFRED	Chloe de la Roche	ISABEL MARANT
BOTTEGA VENETA	MARC JACOBS	Monique Quattrone
FIG & OLIVE	GOLDEN GOOSE	BALMAIN





FOR MORE INFORMATION:

BENNETT ROBINSON
Vice Chairman
Lic. 00984312
+1 818.907.4608
bennett.robinson@cbre.com

ROB WALLER
Executive Vice President
Lic. 0874585
+1 310.550.2536
rob.waller@cbre.com

PATRICK AMOS
Senior Vice President
Lic. 01886581
+1 310.550.2594
patrick.amos@cbre.com

DYLAN HANSETH
Senior Associate
Lic. 01965770
+1 310.550.2578
dylan.hanseth@cbre.com

CBRE

CBRE, Inc.
2000 Avenue of the Stars
Suite 800
Los Angeles, CA 90067

© 2024 CBRE, Inc. All rights reserved. This information has been obtained from sources believed reliable, but has not been verified for accuracy or completeness. You should conduct a careful, independent investigation of the property and verify all information. Any reliance on this information is solely at your own risk. CBRE and the CBRE logo are service marks of CBRE, Inc. All other marks displayed on this document are the property of their respective owners, and the use of such logos does not imply any affiliation with or endorsement of CBRE. Photos herein are the property of their respective owners. Use of these images without the express written consent of the owner is prohibited.