



NW Norman Medical Center

PROPERTY OVERVIEW

- 1,200+ SF of Turn Key Office Space
- Built in 2020
- Second Generation Space
- Desirable Medical Co-Tenants
- Large Signage Opportunity
- 24th Ave NW Frontage
- Excellent Demographics and Traffic Count

OFFERING SUMMARY

| | |
|----------------|------------------|
| Lease Rate: | \$24 SF/yr (NNN) |
| NNN Rate: | \$5.37/SF |
| Available SF: | 1,294 SF |
| Lot Size: | 1.3 Acres |
| Building Size: | 13,663 SF |
| Traffic Count: | 18,700 |

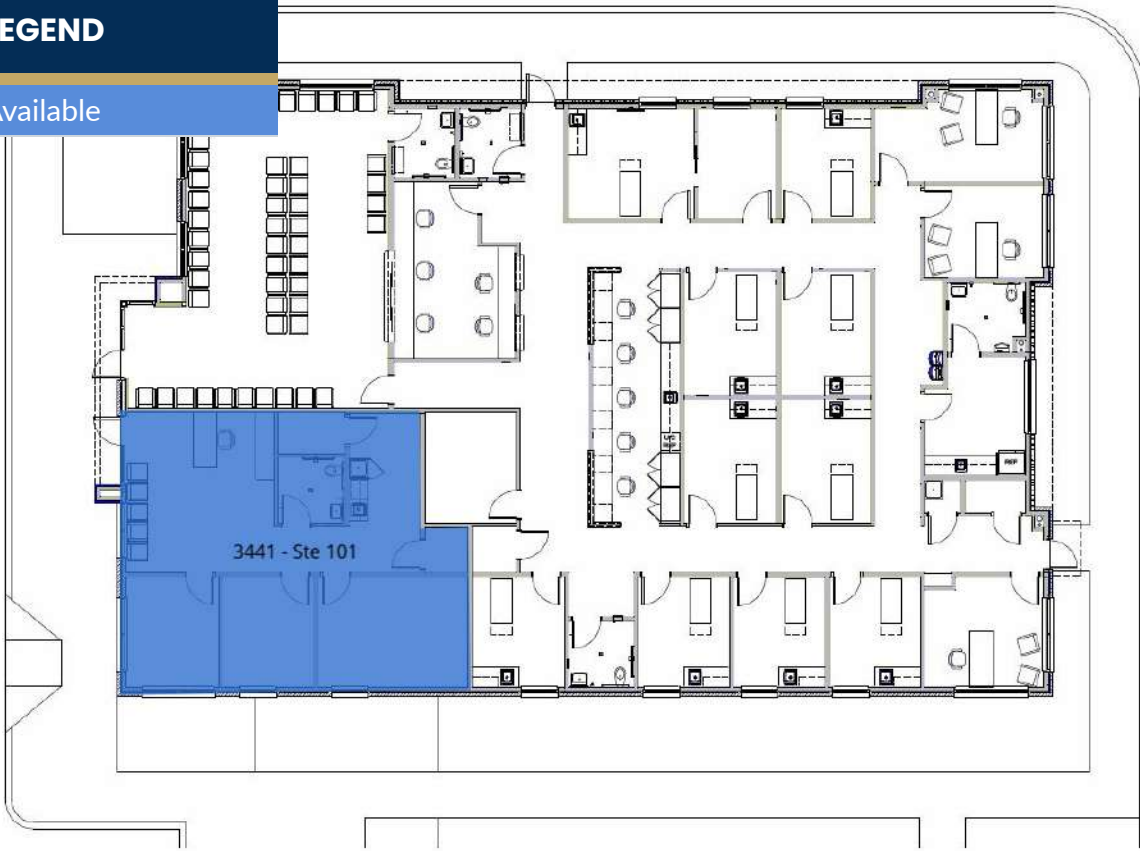
**360° VIRTUAL
TOUR**

Josh White
405.417.6761 josh@fleskeholding.com



LEGEND

Available



AVAILABLE SPACES

| SUITE | TENANT | SIZE | TYPE | RATE | DESCRIPTION |
|----------------|-----------|----------|------|---------------|-------------|
| 3441 - Ste 101 | Available | 1,294 SF | NNN | \$24.00 SF/yr | NNN \$5.37 |

Josh White
 405.417.6761 | josh@fleskeholding.com



FOR LEASE | NW NORMAN MEDICAL CENTER | 3441 24TH AVE NW, NORMAN, OK 73069



Josh White
405.417.6761 | josh@fleskeholding.com

