



HAYES & SHERRY



65 DYERVILLE AVE

JOHNSTON, RHODE ISLAND

FOR SALE

65 DYERVILLE AVE

Johnston, RI



HAYES & SHERRY

LOCATION

65 Dyerville Avenue, Johnston, RI is a strategically located industrial property in one of Johnston's established industrial corridors. The property offers excellent access to I-295, Route 6, and nearby I-95, providing convenient connectivity to Providence and key markets throughout Rhode Island and Southern New England. Surrounded by a mix of industrial, warehouse, and commercial businesses, this location is well suited for manufacturing, distribution, storage, contractor operations, or other industrial users seeking a highly accessible and functional facility.

PROPERTY FEATURES

- ± 7,508 SF Industrial building
 - ± 7,200 Industrial Space
 - ± 308 SF Office Space
- ± 1.61 Acres of land area
- Year Built: 1956
- 16' ceiling height
- Two (2) loading docks
- Three (3) drive-in door

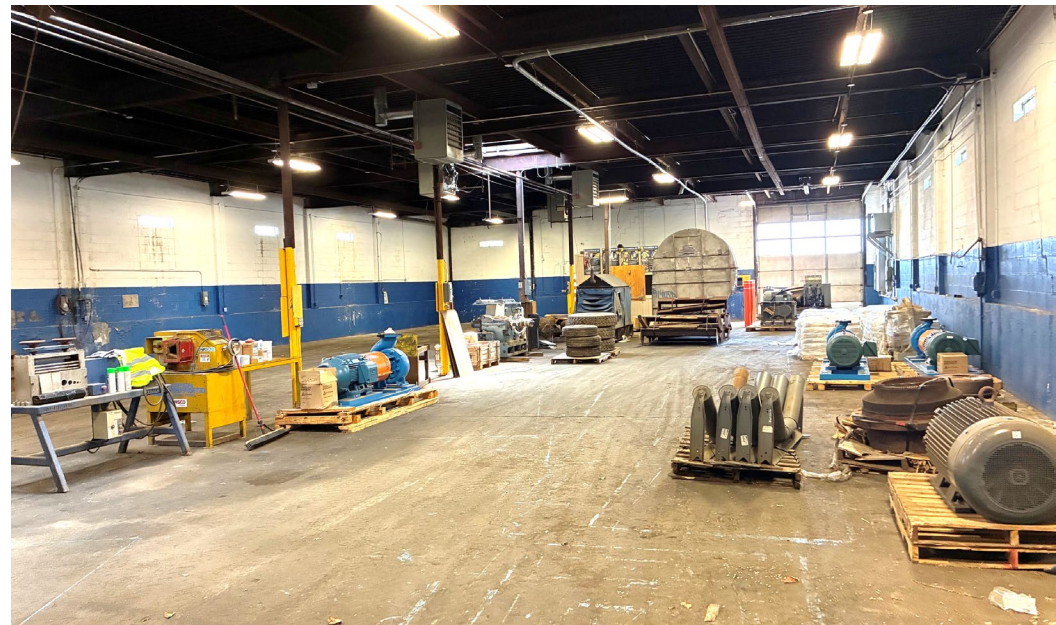
NEIGHBORS

Stop & Shop, Market Baset, BJ's, Aldi, Burlington, Starbucks, Dunkin, Cumberland Farms, Citizens Bank, Bank of America, TD Bank, Planet Fitness

TRAFFIC COUNTS

Killingly Street & King Street: 21,023 VPD
(.16 mi from site)
Manton Ave & Killingly St: 14,527 VPD
(.40 mi from site)

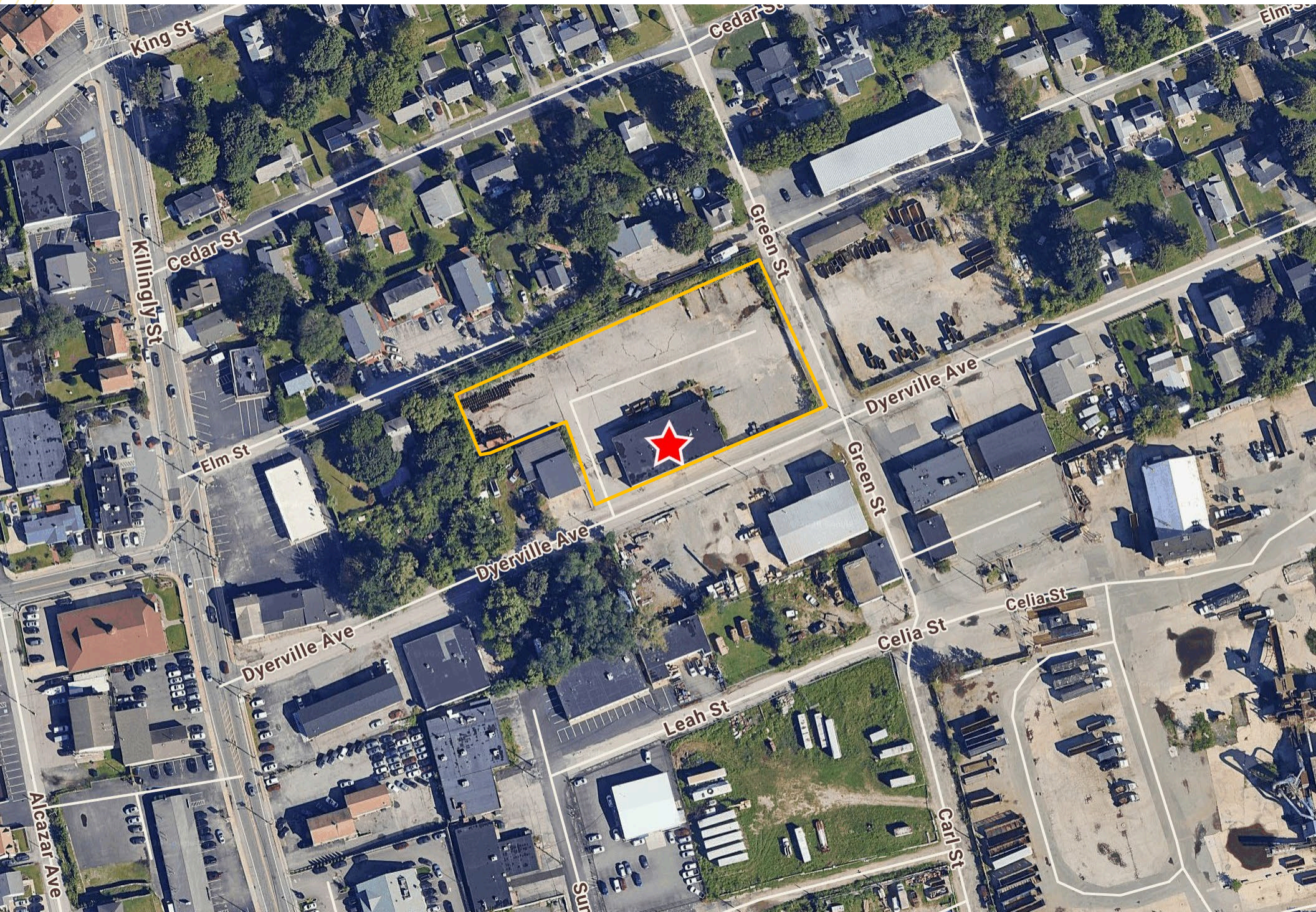
DEMOS	1 Mi.	2 Mi.	3 Mi.
Population	22,618	89,871	188,715
Avg. HH \$	\$91,954	\$84,493	\$77,772
Daytime (Total)	11,279	52,532	144,946



65 Dyerville Ave, Johnston, RI

CUSHMAN & WAKEFIELD

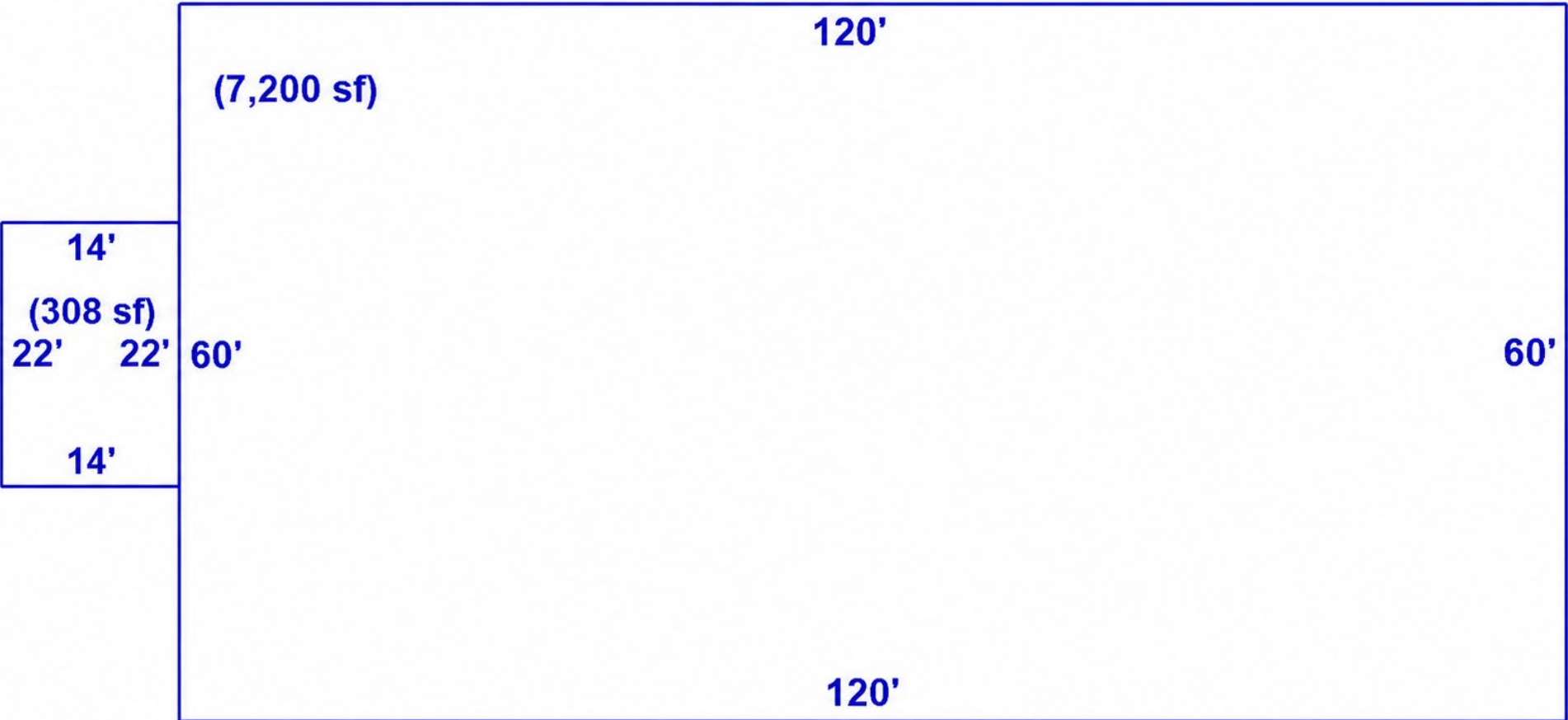
HAYES & SHERRY



SITE PLAN



HAYES & SHERRY



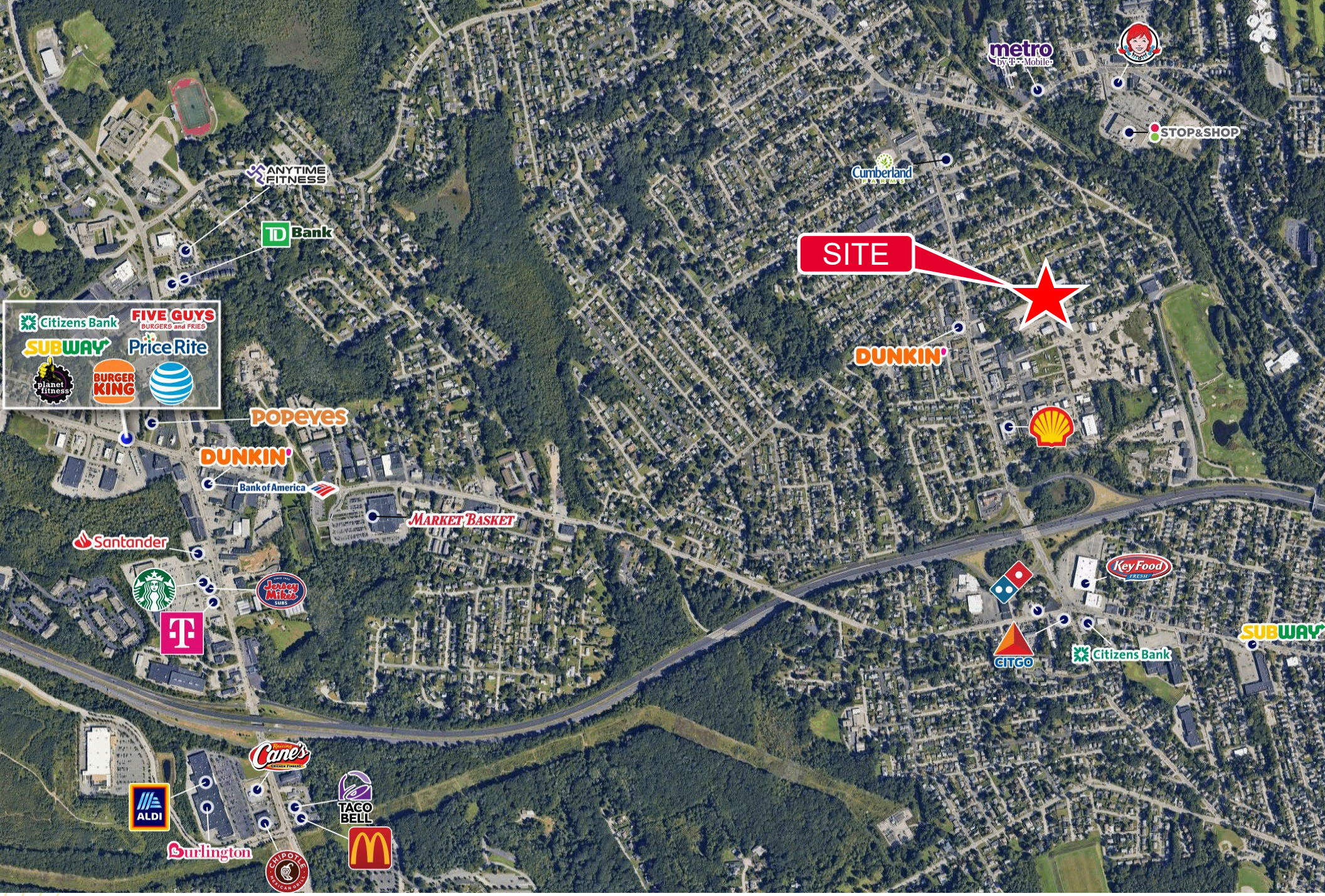
65 Dyerville Ave, Johnston, RI



10 MINUTES
DOWNTOWN PROVIDENCE



17 MINUTES
T.F. GREEN AIRPORT



65 Dyerville Ave

Johnston, Rhode Island

CONTACT INFORMATION

Karl Sherry

Partner
401 273 7427
ksherry@hayessherry.com

Connor Kenworthy

Vice President
401 601 0566
ckenworthy@hayessherry.com

©2026 Cushman & Wakefield. All rights reserved. The information contained in this communication is strictly confidential. This information has been obtained from sources believed to be reliable but has not been verified. NO WARRANTY OR REPRESENTATION, EXPRESS OR IMPLIED, IS MADE AS TO THE CONDITION OF THE PROPERTY (OR PROPERTIES) REFERENCED HEREIN OR AS TO THE ACCURACY OR COMPLETENESS OF THE INFORMATION CONTAINED HEREIN, AND SAME IS SUBMITTED SUBJECT TO ERRORS, OMISSIONS, CHANGE OF PRICE, RENTAL OR OTHER CONDITIONS, WITHDRAWAL WITHOUT NOTICE, AND TO ANY SPECIAL LISTING CONDITIONS IMPOSED BY THE PROPERTY OWNER(S). ANY PROJECTIONS, OPINIONS OR ESTIMATES ARE SUBJECT TO UNCERTAINTY AND DO NOT SIGNIFY CURRENT OR FUTURE PROPERTY PERFORMANCE.