



Governor's Place

3575 Macon Rd
 Columbus, Georgia 31907

Property Highlights

- Ideal for office, retail, or medical use
- Strong visibility along Macon Road
- Ample on-site parking
- Various floor plans and suite sizes available

Property Overview

Governor's Place at 3575 Macon Road is a well-maintained, multi-building office park located along one of Columbus's primary commercial roadways, offering flexible space options ideal for office, retail, or medical use. The property features multiple buildings, strong visibility from Macon Road, convenient access for clients and employees, and proximity to established residential areas, retail, and medical services, making it a versatile and attractive location for a wide range of professional users.

Offering Summary

Lease Rate:	Negotiable
Available SF:	+/- 688 - 1,628 SF
Lot Size:	+/- 3.39 Acres

Demographics 0.3 Miles 0.5 Miles 1 Mile

Total Households	323	747	2,627
Total Population	735	1,838	7,046
Average HH Income	\$79,851	\$83,635	\$92,313

For More Information

Amy D. Gill, MICP, MRP

O: 706 660 5418 x1009
 agill@g2cre.com | GA #381793

Jack Hayes, SIOR, CCIM

O: 706 660 5418 x1002
 jhayes@g2cre.com | GA #336627

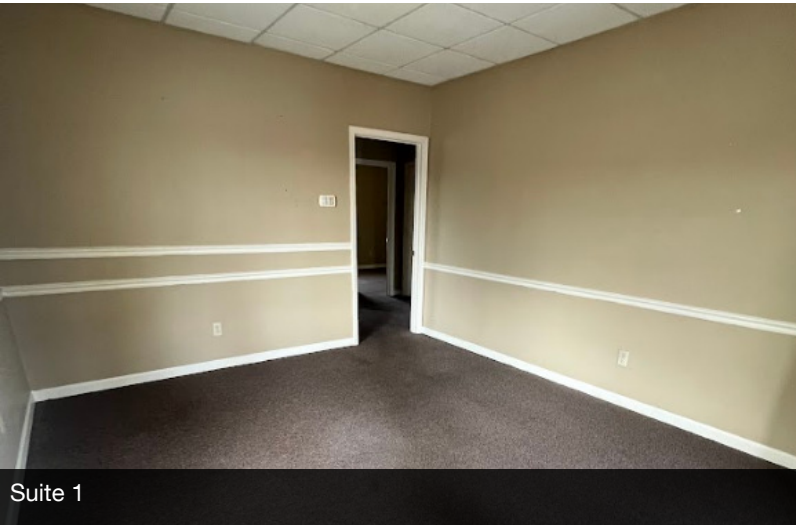
Lease Information

Lease Type:	NNN	Lease Term:	Negotiable
Total Space:	688 - 1,547 SF	Lease Rate:	Negotiable

Available Spaces

Suite Size (SF) Type Description

Unit 1	1,095 SF	NNN	+/- 1,095 SF office space featuring a reception area, 5 private offices, and a private restroom.
Unit 10	1,209 SF	NNN	+/- 1,209 office space featuring a reception area, three private offices, a large great room, and a private restroom.
Unit 11	990 SF	NNN	+/- 990 SF office space featuring a reception area, three private offices, and a private restroom. Fresh paint throughout. Could be combined with Unit 13 for a total of +/- 1,937 SF.
Unit 13	947 SF	NNN	+/- 947 SF office space featuring a reception area, three private offices, and a private restroom. Could be combined with Unit 11 for a total of +/- 1,937 SF.
Unit 17	688 SF	NNN	+/- 688 SF office space featuring a reception area, three private offices, and a private restroom. Fresh paint throughout.
Unit 25	1,547 SF	NNN	+/- 1,547 SF office space featuring a large great room or bullpen, five private offices, and a private restroom. Freshly painted with new LVP flooring throughout.



Suite 1



Suite 1



Suite 10



Suite 10



Suite 10



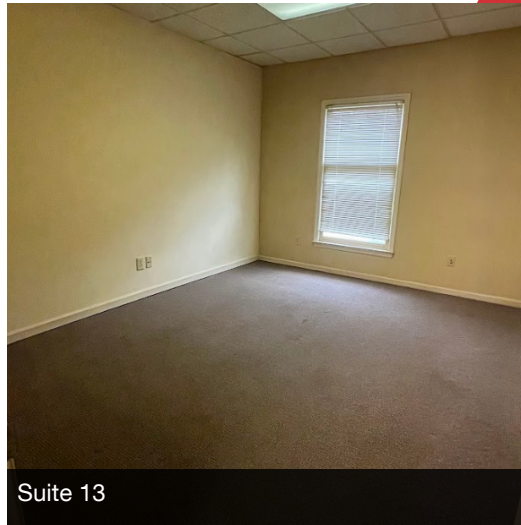
Suite 11



Suite 11



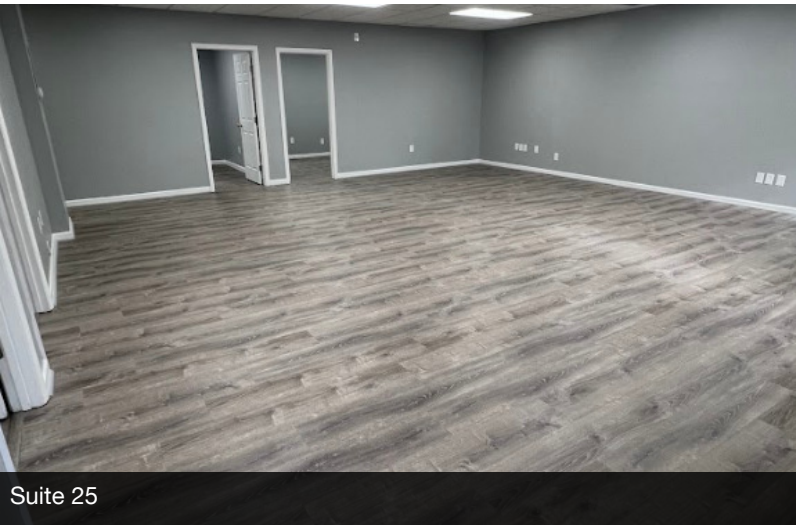
Suite 13



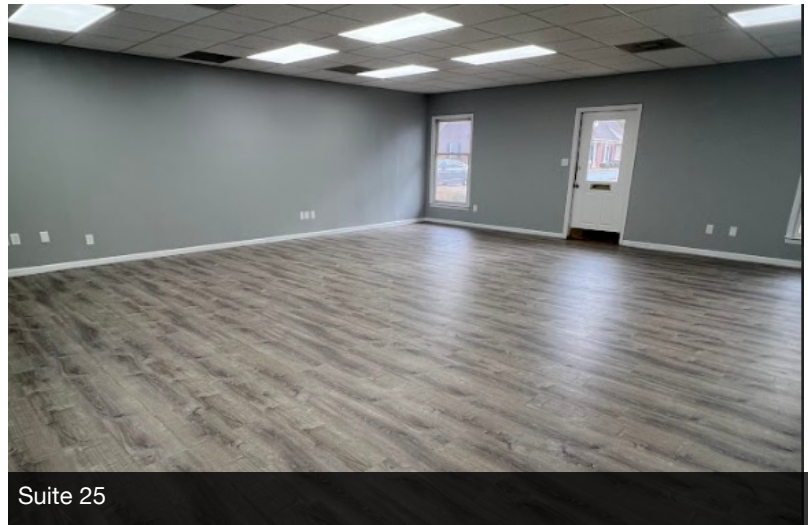
Suite 13



Suite 13



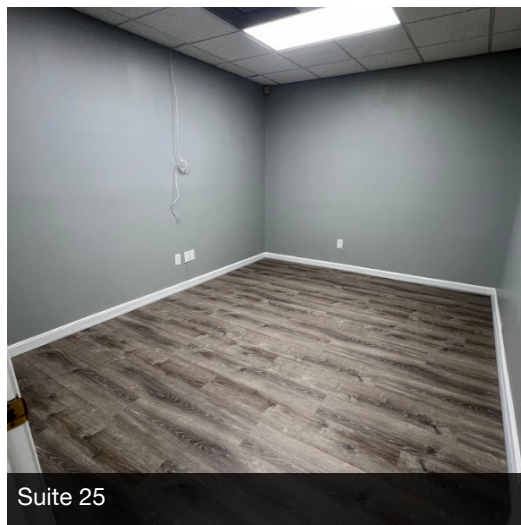
Suite 25



Suite 25



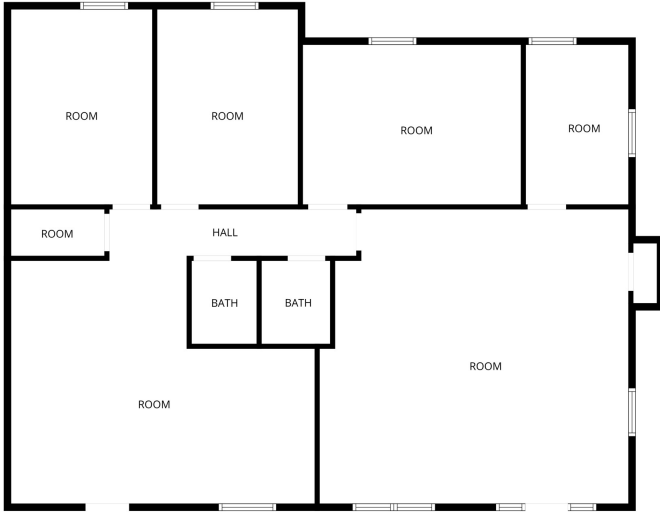
Suite 25



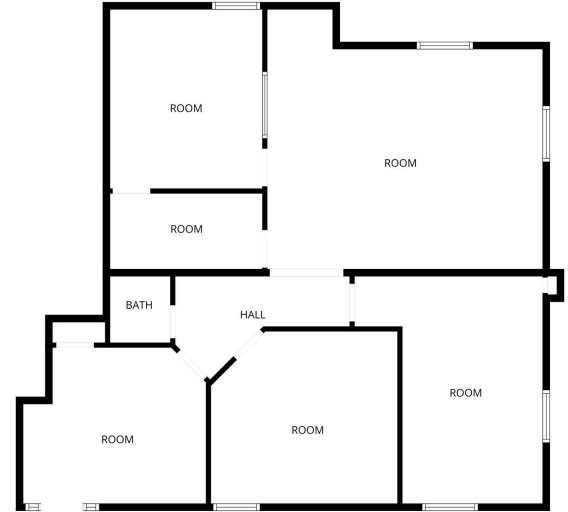
Suite 25



Suite 25



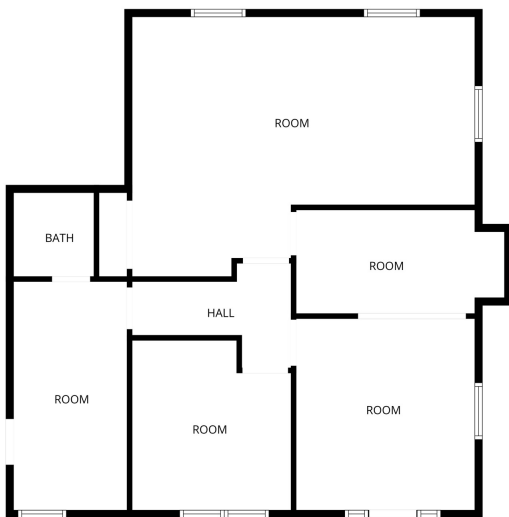
FLOOR PLAN CREATED BY CUBICASA APP. MEASUREMENTS DEEMED HIGHLY RELIABLE BUT NOT GUARANTEED.



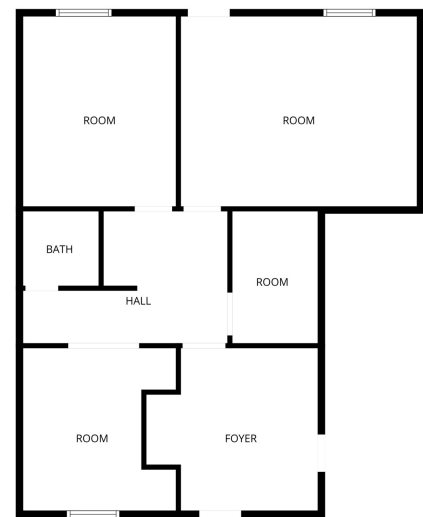
FLOOR PLAN CREATED BY CUBICASA APP. MEASUREMENTS DEEMED HIGHLY RELIABLE BUT NOT GUARANTEED.

Suite 2/3

Suite 10



FLOOR PLAN CREATED BY CUBICASA APP. MEASUREMENTS DEEMED HIGHLY RELIABLE BUT NOT GUARANTEED.



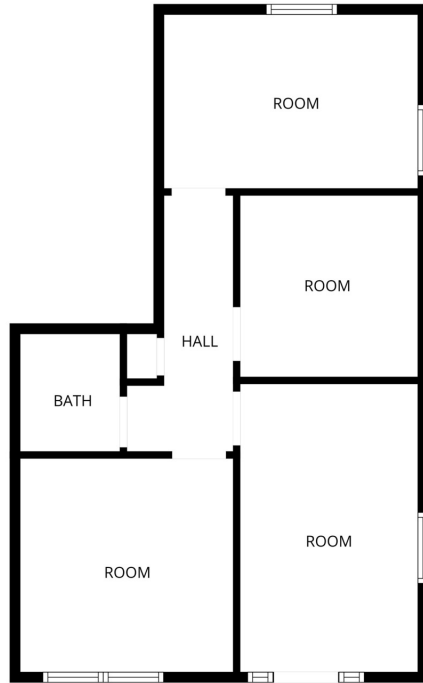
FLOOR PLAN CREATED BY CUBICASA APP. MEASUREMENTS DEEMED HIGHLY RELIABLE BUT NOT GUARANTEED.

Suite 11

Suite 12

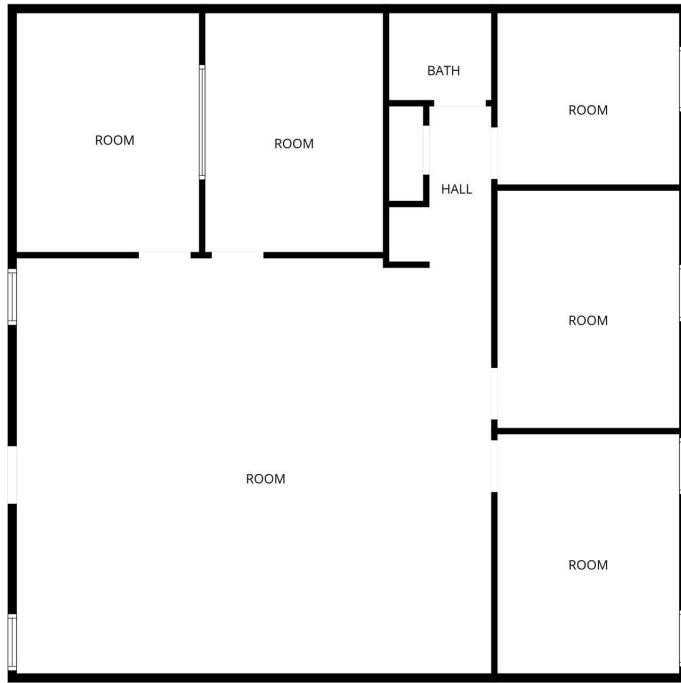
We obtained the information above from sources we believe to be reliable. However, we have not verified its accuracy and make no guarantee, warranty or representation about it. It is submitted subject to the possibility of errors, omissions, change of price, rental or other conditions, prior sale, lease or financing, or withdrawal without notice. We include projections, opinions, assumptions or estimates for example only, and they may not represent current or future performance of the property. You and your tax and legal advisors should conduct your own investigation of the property and transaction.

Post Office Box 4529
 Columbus, GA 31904
 706 660 5418 tel
G2cre.com



Suite 17

FLOOR PLAN CREATED BY CLIMATEAPP. MEASUREMENTS DEEMED HIGHLY RELIABLE BUT NOT GUARANTEED.

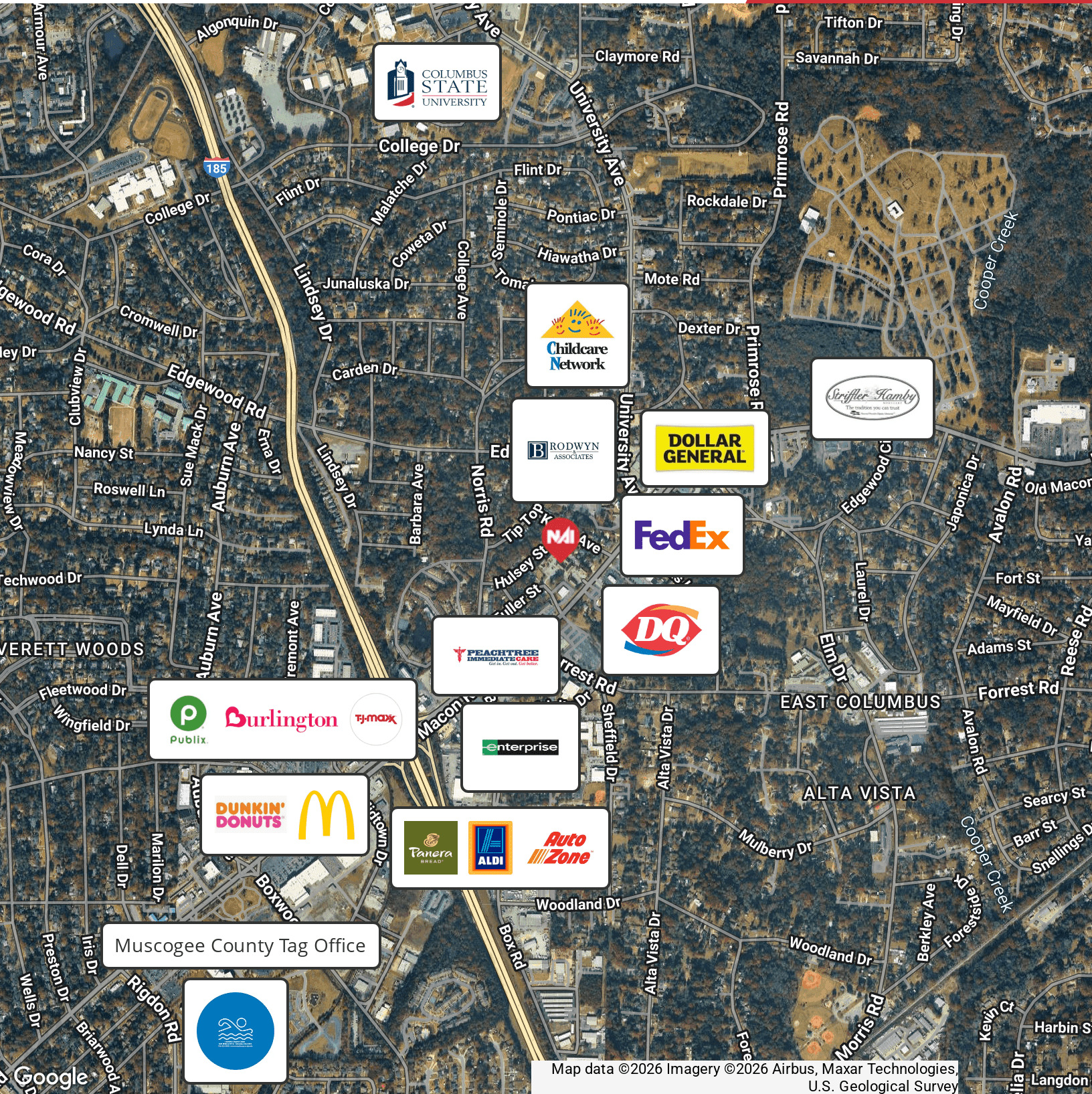


Suite 25

FLOOR PLAN CREATED BY CLIMATEAPP. MEASUREMENTS DEEMED HIGHLY RELIABLE BUT NOT GUARANTEED.

We obtained the information above from sources we believe to be reliable. However, we have not verified its accuracy and make no guarantee, warranty or representation about it. It is submitted subject to the possibility of errors, omissions, change of price, rental or other conditions, prior sale, lease or financing, or withdrawal without notice. We include projections, opinions, assumptions or estimates for example only, and they may not represent current or future performance of the property. You and your tax and legal advisors should conduct your own investigation of the property and transaction.

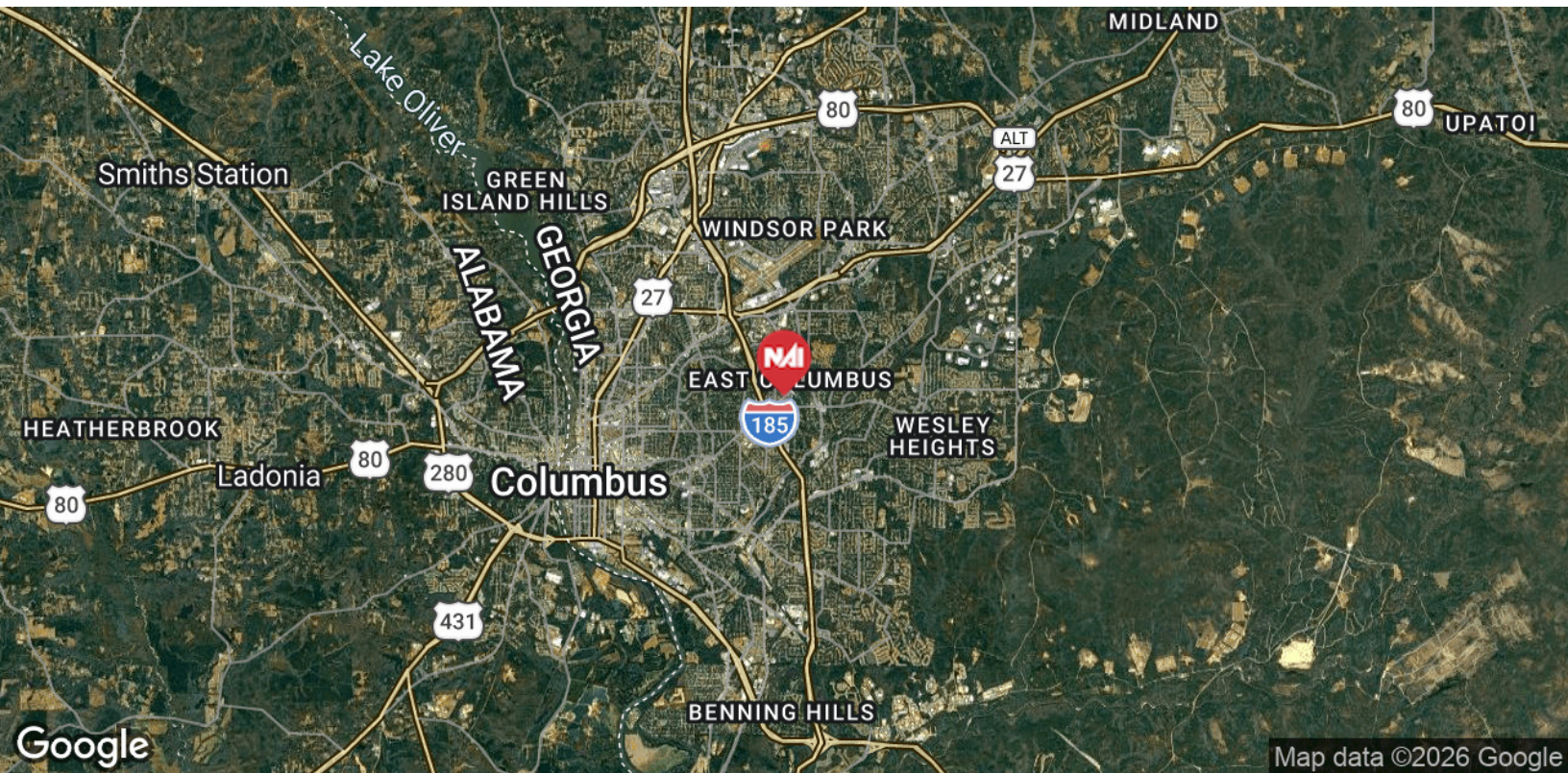
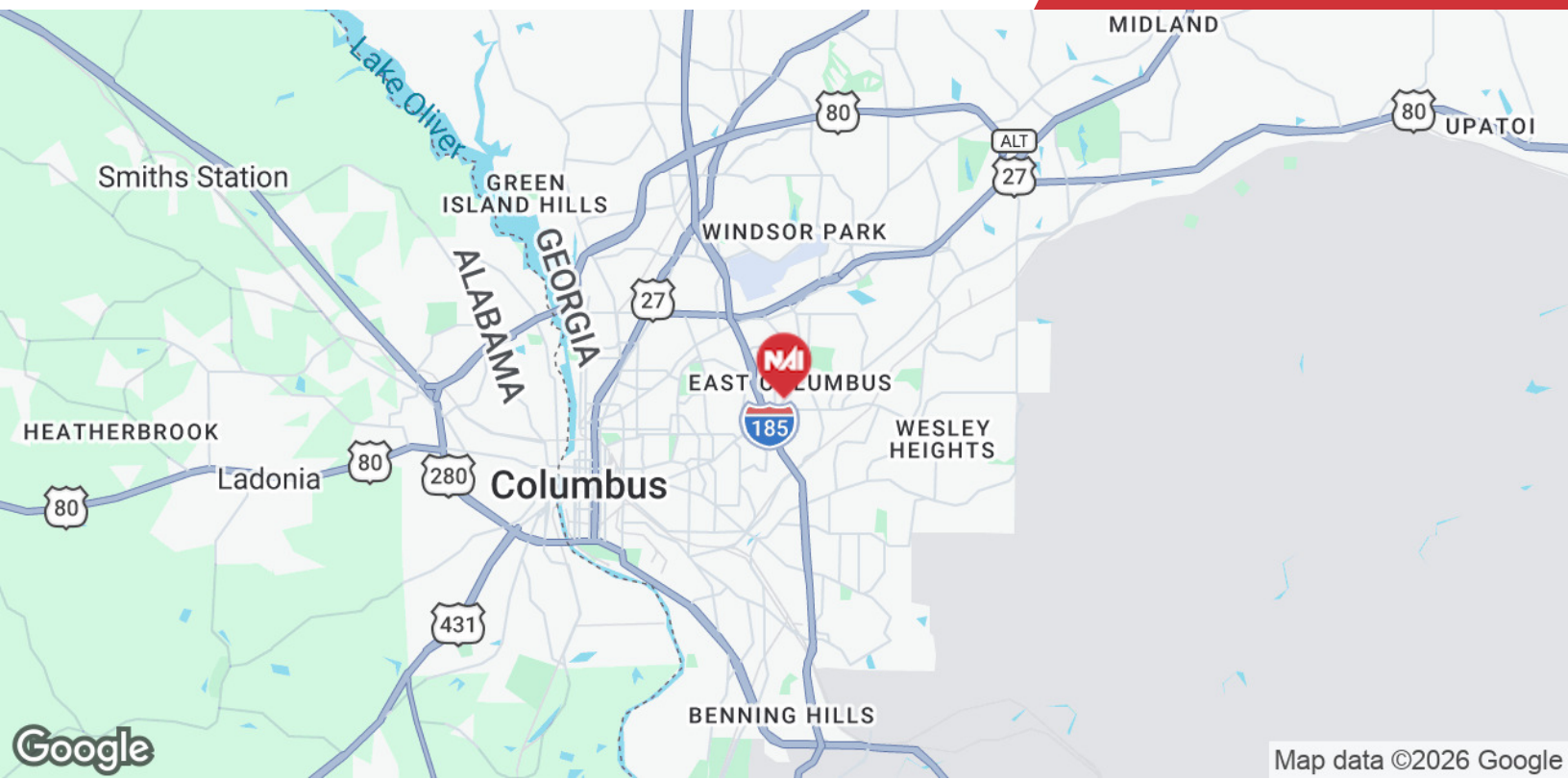
Post Office Box 4529
Columbus, GA 31904
706 660 5418 tel
G2cre.com



Map data ©2026 Imagery ©2026 Airbus, Maxar Technologies, U.S. Geological Survey

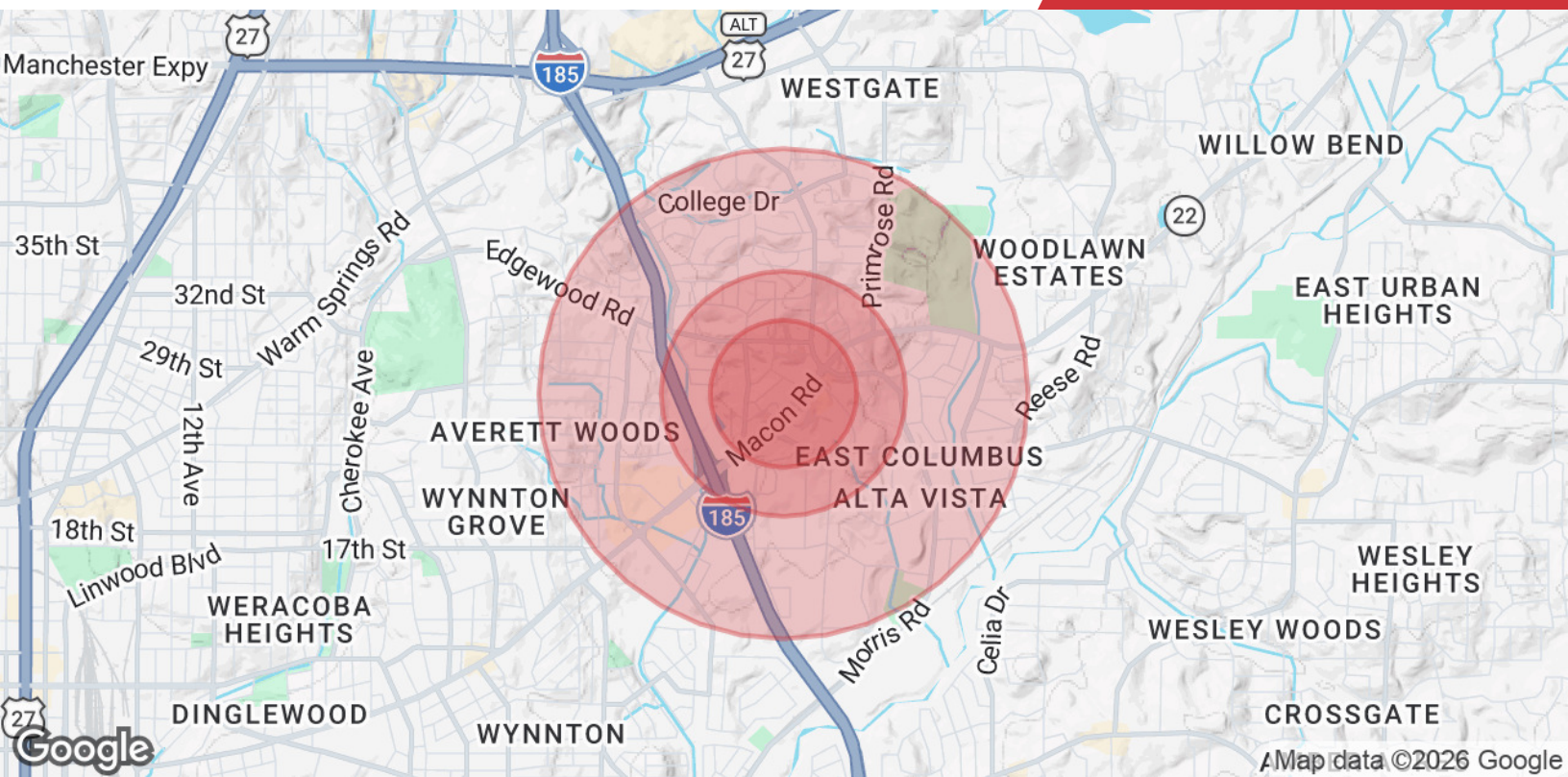
We obtained the information above from sources we believe to be reliable. However, we have not verified its accuracy and make no guarantee, warranty or representation about it. It is submitted subject to the possibility of errors, omissions, change of price, rental or other conditions, prior sale, lease or financing, or withdrawal without notice. We include projections, opinions, assumptions or estimates for example only, and they may not represent current or future performance of the property. You and your tax and legal advisors should conduct your own investigation of the property and transaction.

Post Office Box 4529
 Columbus, GA 31904
 706 660 5418 tel
G2cre.com



We obtained the information above from sources we believe to be reliable. However, we have not verified its accuracy and make no guarantee, warranty or representation about it. It is submitted subject to the possibility of errors, omissions, change of price, rental or other conditions, prior sale, lease or financing, or withdrawal without notice. We include projections, opinions, assumptions or estimates for example only, and they may not represent current or future performance of the property. You and your tax and legal advisors should conduct your own investigation of the property and transaction.

Post Office Box 4529
Columbus, GA 31904
706 660 5418 tel
G2cre.com



	0.3 Miles	0.5 Miles	1 Mile
Population			
Total Population	735	1,838	7,046
Average Age	41	39	38
Average Age (Male)	39	37	36
Average Age (Female)	43	41	39
Households & Income			
Total Households	323	747	2,627
# of Persons per HH	2.3	2.5	2.7
Average HH Income	\$79,851	\$83,635	\$92,313
Average House Value	\$238,913	\$257,300	\$284,531

2020 American Community Survey (ACS)