

For Sale



Downtown Overland Park Investment Opportunity!

- 6,746 total SF
- 100% occupied through March 2026
- Perfectly positioned in downtown Overland Park
- Call for updated pricing

For more information:

Reid Kasic
816.878.6316
rkasic@blockllc.com

Riley Rader
816.878.6316
rrader@blockllc.com

The information contained in this marketing flyer is presented as general information only. Block Real Estate Services, LLC makes no representation as to its accuracy. This information is not intended as legal, financial or real estate advice and must not be relied upon as such. You should make your own inquiries, obtain independent inspections, and seek professional advice tailored to your specific circumstances before making any legal, financial or real estate decisions.

Building Specifications

Building SF:	Lot 3: 2,472 SF Lot 4: 2,275 SF Lot 5: 1,999 SF Total SF: 6,746 SF
Year Built:	1955
Zoning:	DFD
Parking:	Unreserved street parking
Parcel #:	(Lot 3) NPO4800000 0003A (Lot 4) NPO4800000 0004A (Lot 5) NPO4800000 0005A



For more information:

Reid Kasic
816.878.6316
rkasic@blockllc.com

Riley Rader
816.878.6316
rrader@blockllc.com

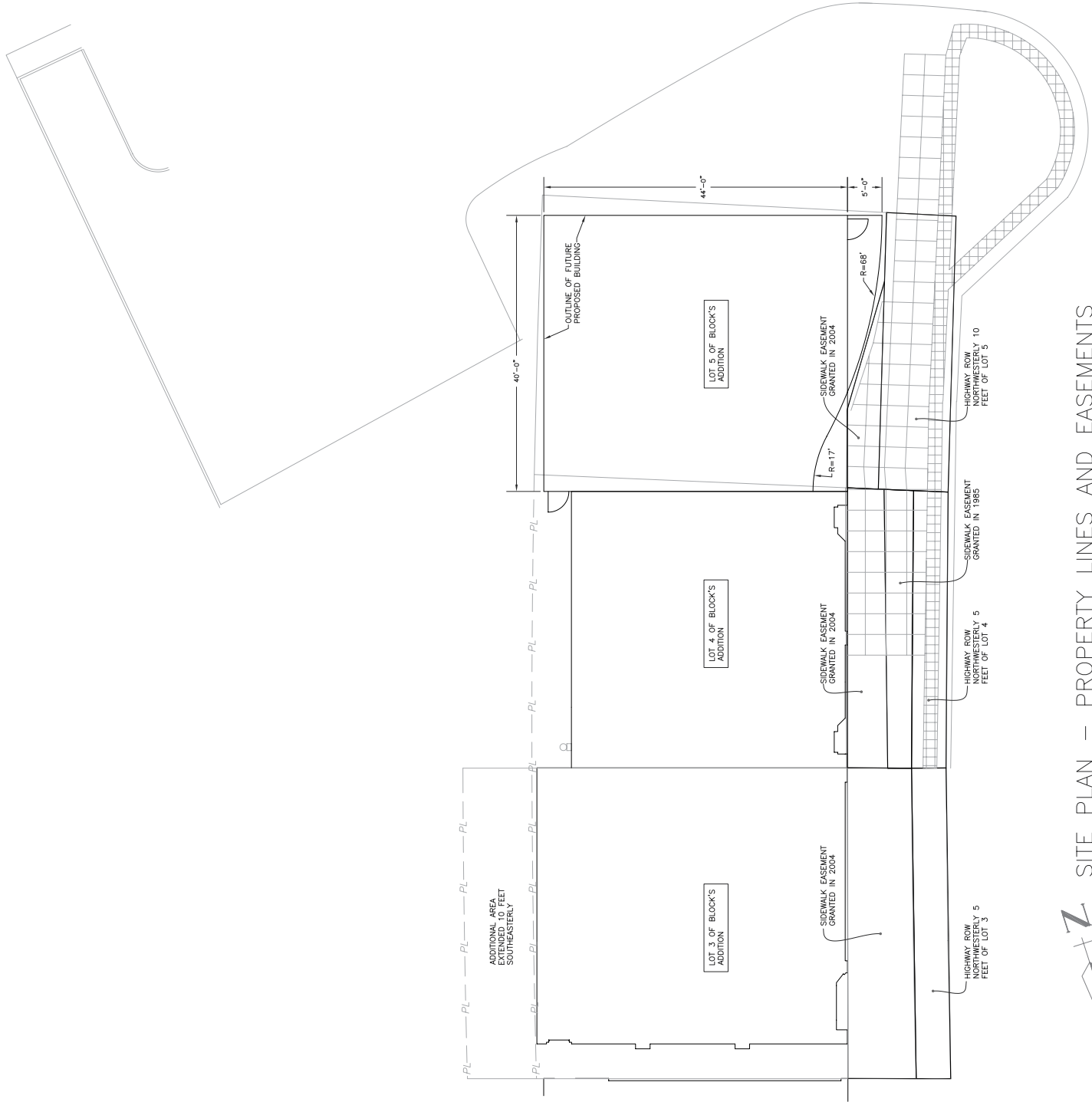
Property Photos



Parcel Outline



Site Map

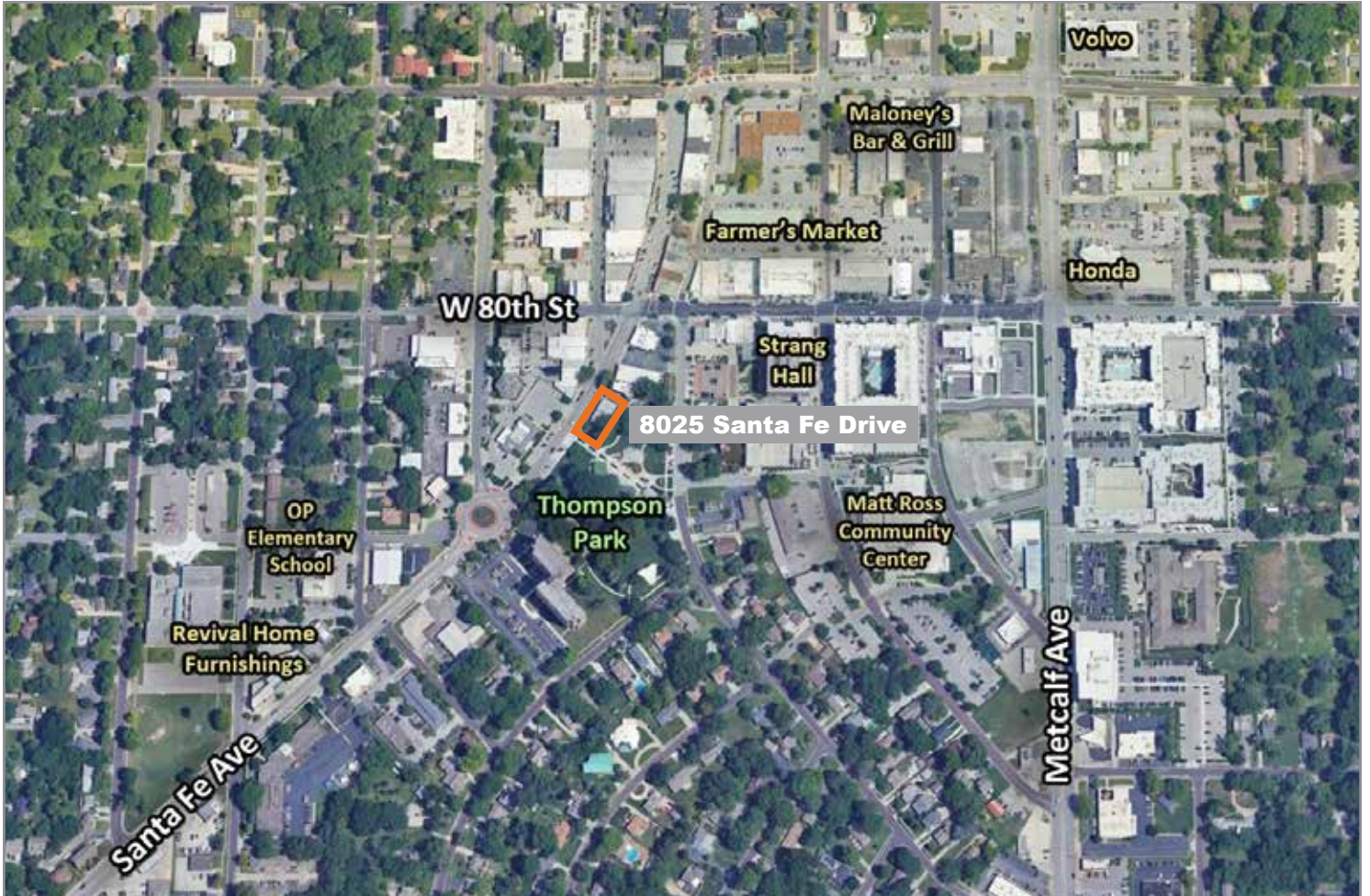


SITE PLAN - PROPERTY LINES AND EASEMENTS
(REFLECTS SKW FINDINGS)
SCALE: 1/8" = 1'-0"

8025 Santa Fe Drive

Overland Park, Kansas 66204

For Sale



For more information:

Reid Kosic
816.878.6316
rkosic@blockllc.com

Riley Rader
816.878.6316
rrader@blockllc.com