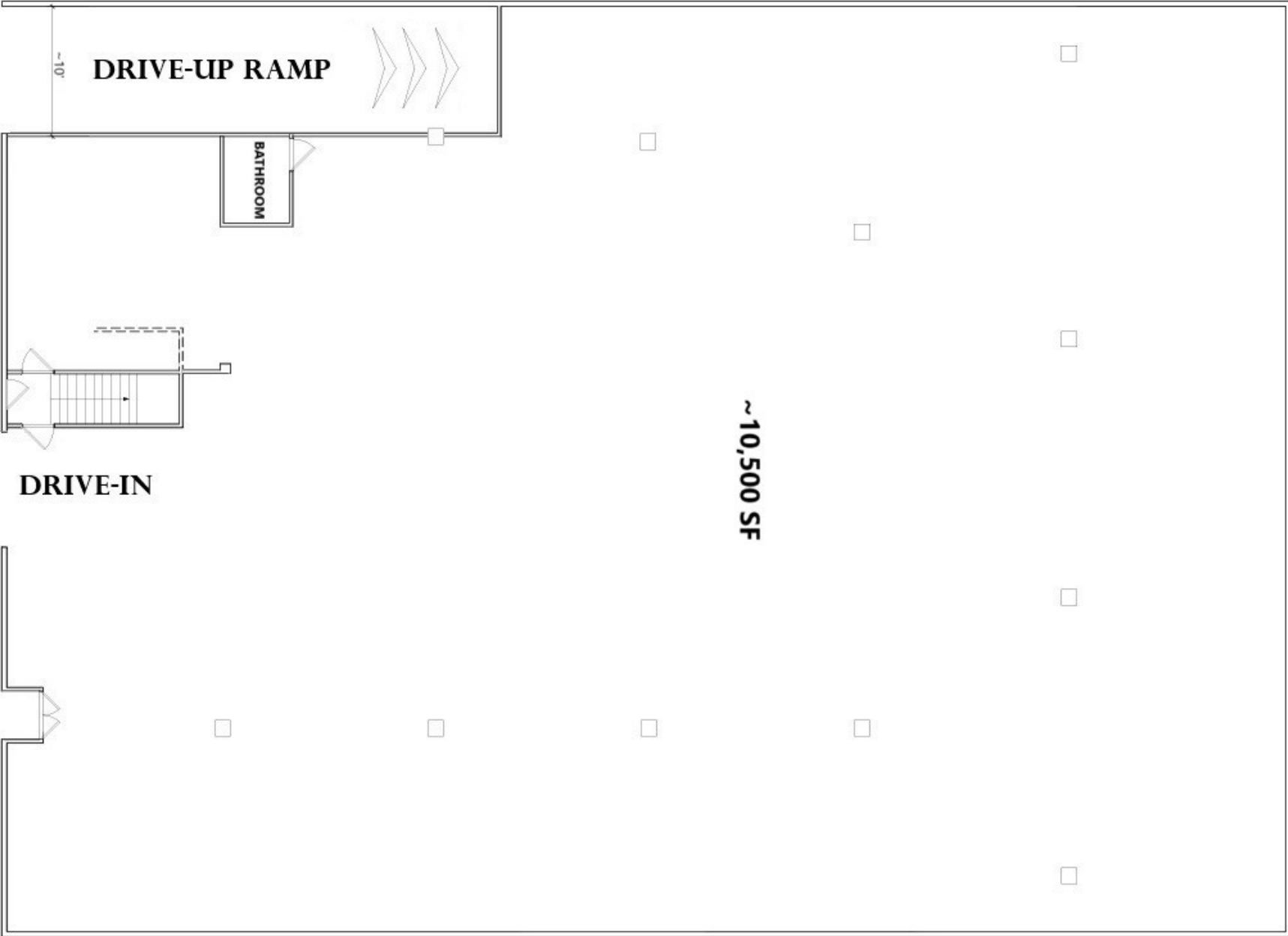


Ground Floor with Drive-in from street

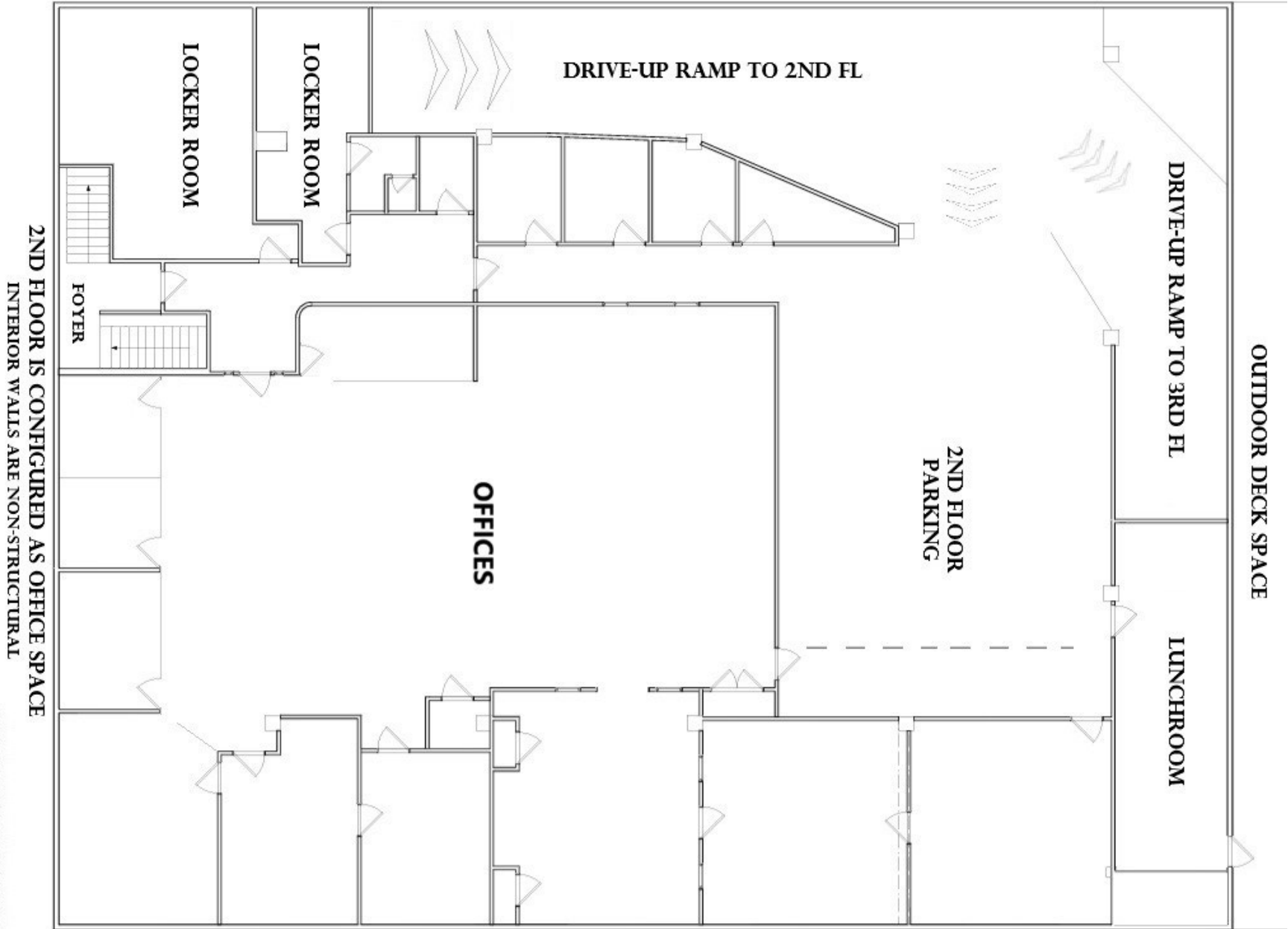
10 W Broad Street, Fleetwood | 30,500 SF COMMERCIAL BUILDING | FOR SALE: \$6.5M



119 Pondfield Road #456, Bronxville, NY 10708. 212.537.6900 © 2023 Mineo Company LLC. All material presented herein is intended for information purposes only. While, this information is believed to be correct, it is represented subject to errors, omissions, changes or withdrawal without notice. All property information, including, but not limited to square footage, air rights, permissible uses in property listings SHOULD BE VERIFIED BY YOUR OWN ATTORNEY, ARCHITECT OR ZONING EXPERT. If your property is currently listed with another real estate broker, please disregard this offer. It is not our intention to solicit the offerings of other real estate brokers.

2nd Floor with Drive-in Ramp from street

10 W Broad Street, Fleetwood | 30,500 SF COMMERCIAL BUILDING | FOR SALE: \$6.5M



2ND FLOOR IS CONFIGURED AS OFFICE SPACE
INTERIOR WALLS ARE NON-STRUCTURAL

3rd Floor with Drive-in Ramp from street

10 W Broad Street, Fleetwood | 30,500 SF COMMERCIAL BUILDING | FOR SALE: \$6.5M

