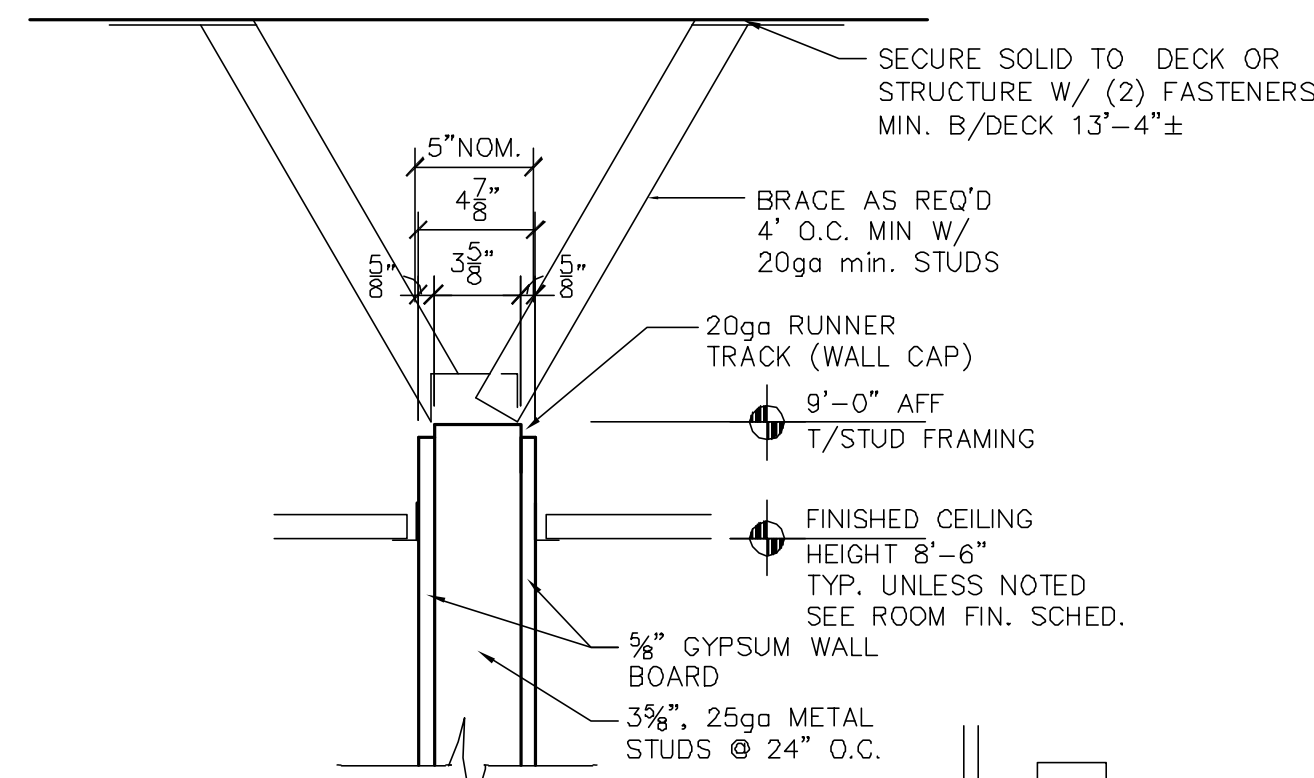
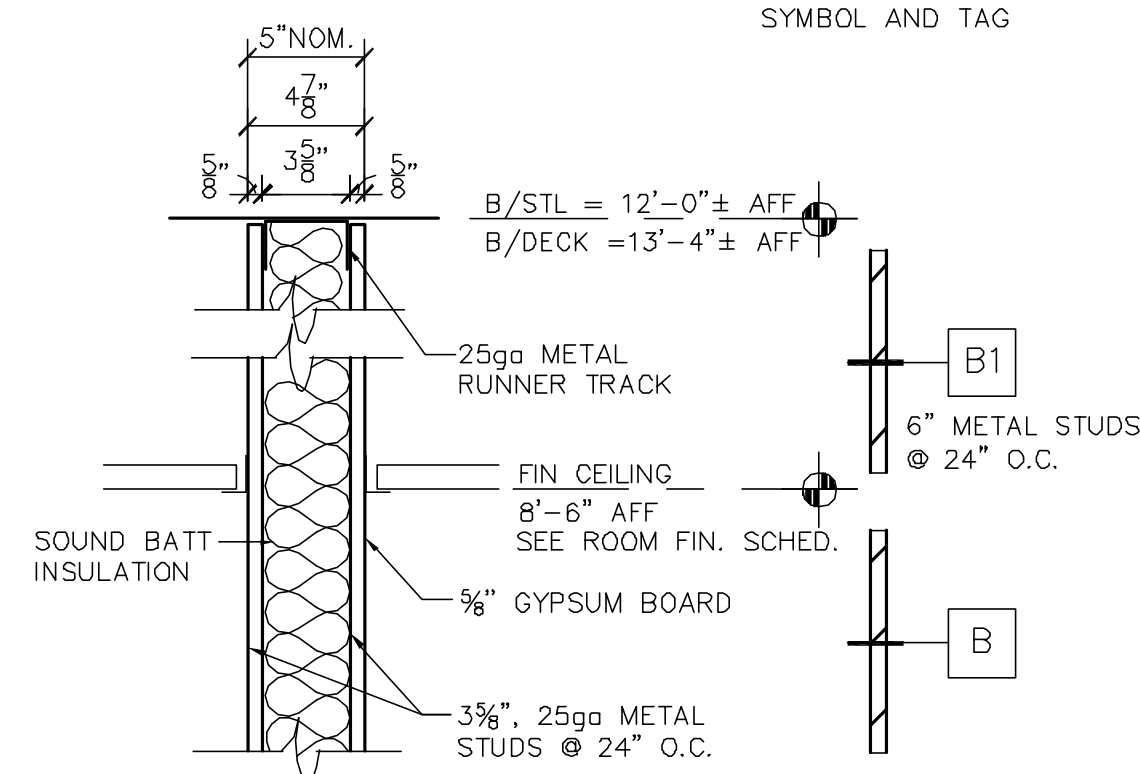


NOTES :

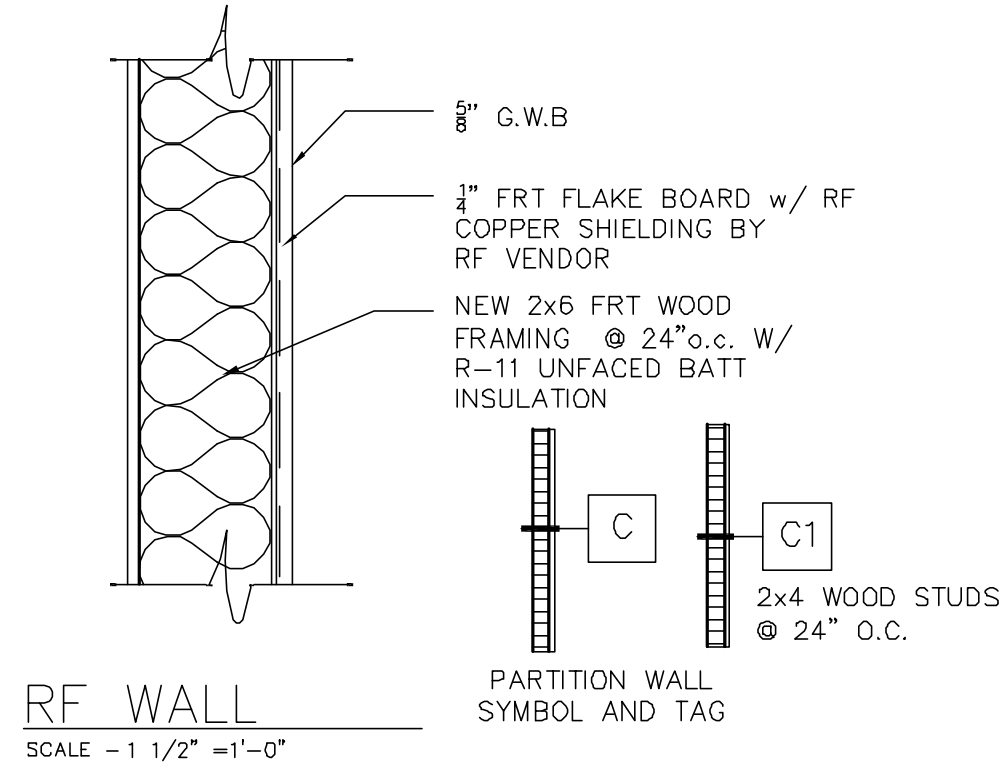
- 6" STUDS WHERE INDICATED ON PLAN FOR PLUMBING CHASE.
- WATER RESIST. GYP. BOARD ON WALLS W/ PLUMBING PENETRATIONS.



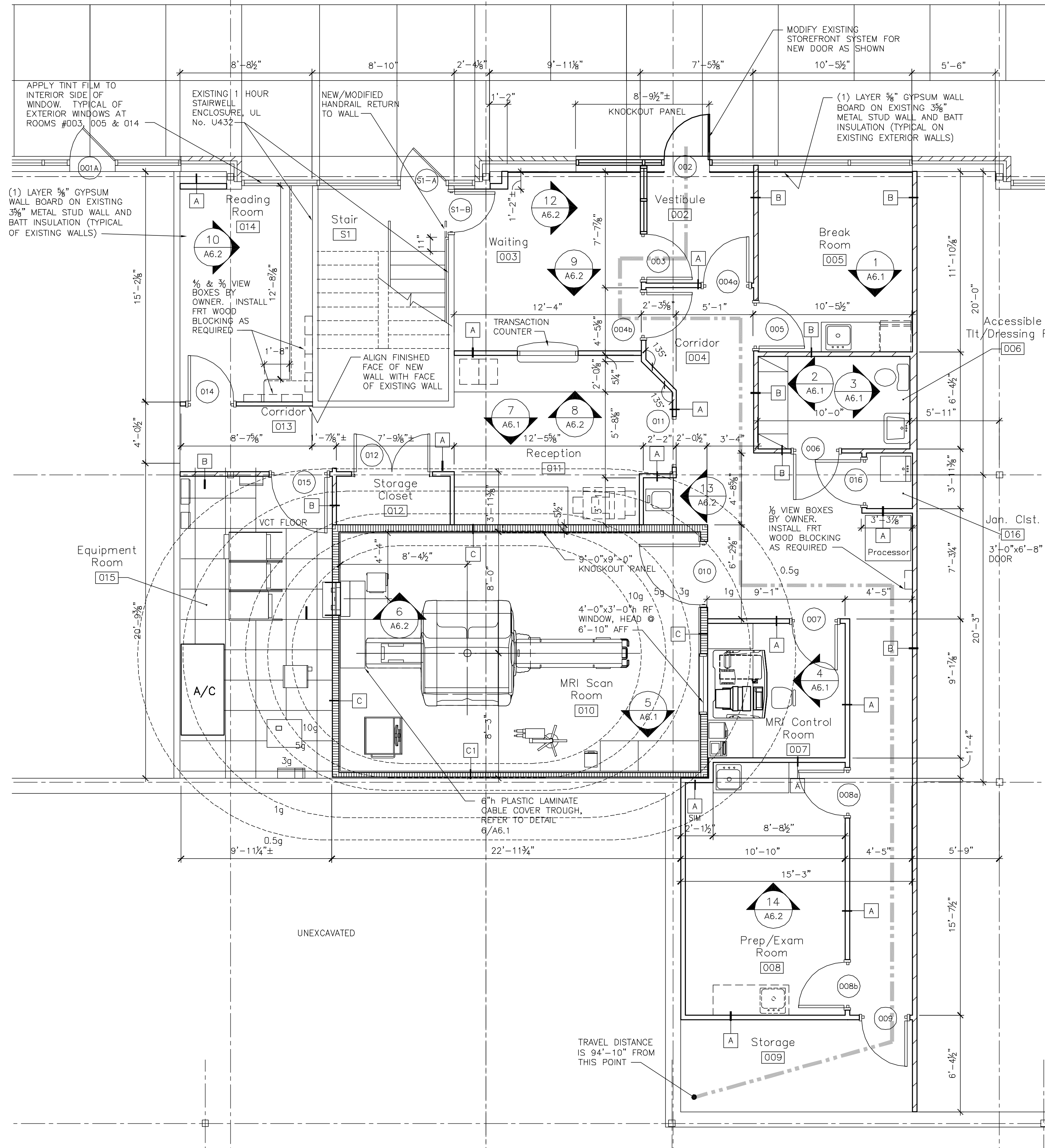
TYPICAL PARTITION
SCALE - 1/2" = 1'-0"



SOUND INSULATED PARTITION
SCALE - 1/2" = 1'-0"



RF WALL
SCALE - 1/2" = 1'-0"



GENERAL NOTES:

- DIMENSIONS ARE FROM FACE OF STUD TO FACE OF STUD, FACE OF STUD TO FACE OF EXISTING WALL CONSTRUCTION OR EDGE OF CABINET TO EDGE OF CABINET.
- EACH CONTRACTOR IS RESPONSIBLE FOR COORDINATING THEIR WORK WITH THE OTHER DISCIPLINES. NOTIFY THE ARCHITECT IMMEDIATELY IN CASE OF DISCREPANCY.
- EACH CONTRACTOR IS RESPONSIBLE FOR COORDINATING THEIR WORK WITH GE MRI INSTALLATION DRAWINGS. NOTIFY THE ARCHITECT IMMEDIATELY IN CASE OF DISCREPANCY.
- INSTALL FRT WOOD BLOCKING AT ALL CASEWORK, VIEW BOXES, AND DOOR STOPS AS REQUIRED. COORDINATE LOCATIONS WITH FLOOR PLANS AND CASEWORK DETAILS ON SHEETS A6.1 AND A6.2.

NEWPORT KENTUCKY 41071
1000 MONMOUTH ST.
PHONE (502) 414-3223
FAX (502) 414-3223
CONTRACTORS • ARCHITECTS • BUILDERS • CONSTRUCTION MANAGEMENT

EGC

Shaun A. Anderson
Architect
Newport, Kentucky 41071

1010 Monmouth St.
Newport, KY 41071

THIS DRAWING AND ITS REPRODUCTIONS ARE THE PROPERTY OF EGC CONSTRUCTION AND MAY NOT BE REPRODUCED, PUBLISHED, DISTRIBUTED, OR USED IN ANY WAY WITHOUT WRITTEN PERMISSION OF EGC CONSTRUCTION. COPYRIGHT © 2003. ALL RIGHTS RESERVED.

PROJECT NO.: 30562

FILE NAME: M30562.dwg

REVIEWED BY: SDS

DRAWN BY: SDS

SCALE: AS NOTED

DATE: January 14, 2002

Permit Issue: Jan. 21, 2003 SDS

REVISIONS

New MRI Suite for Imatech Northern Kentucky Orthopaedics
CrestView Hills, KY 41071
500 Thomas More Parkway

SHEET NUMBER
A2.2