



**CUSHMAN &
WAKEFIELD**

**\$2.00 PSF PER ANNUM
TO THE CO-OPERATING BROKER**

FEATURED SUITE

**67 YONGE
STREET**

Suite 200: 7,088 SF

SPACE HIGHLIGHTS

- Recently improved turnkey space
- 12 offices, 2 large boardrooms and expansive kitchen
- Direct walk-up access from the lobby as well as elevator access

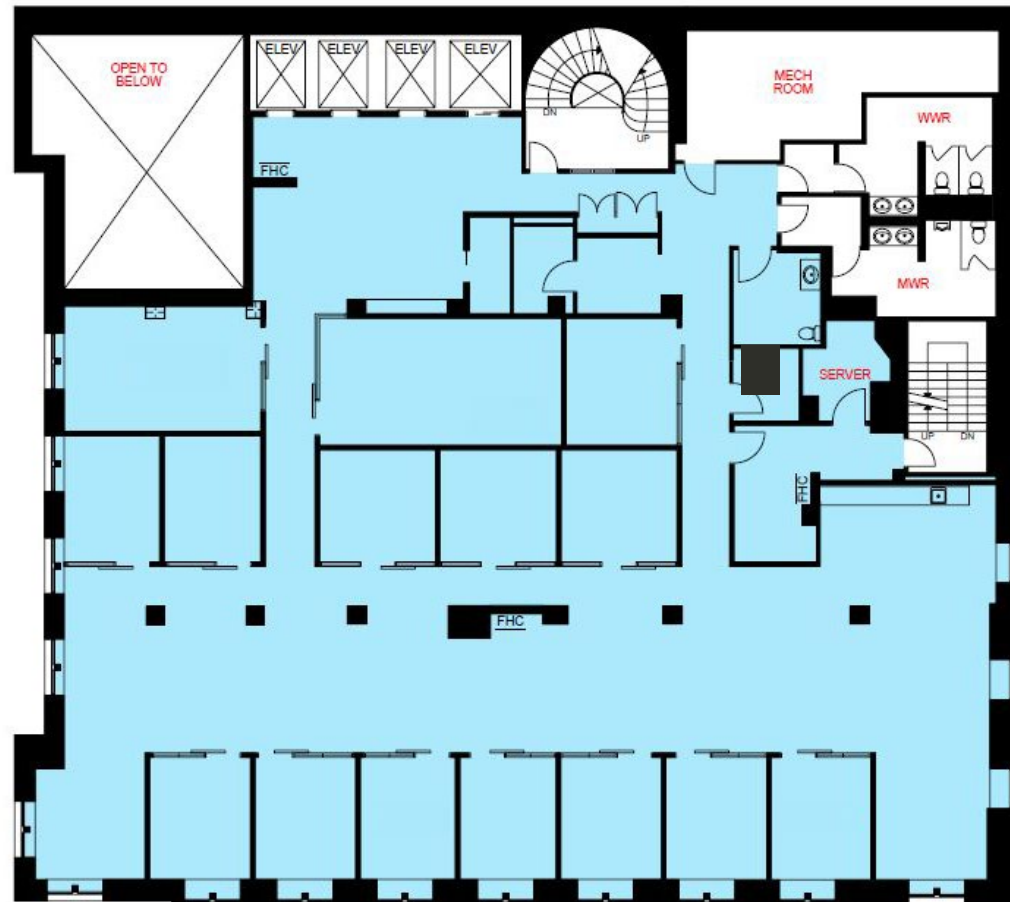
DETAILS

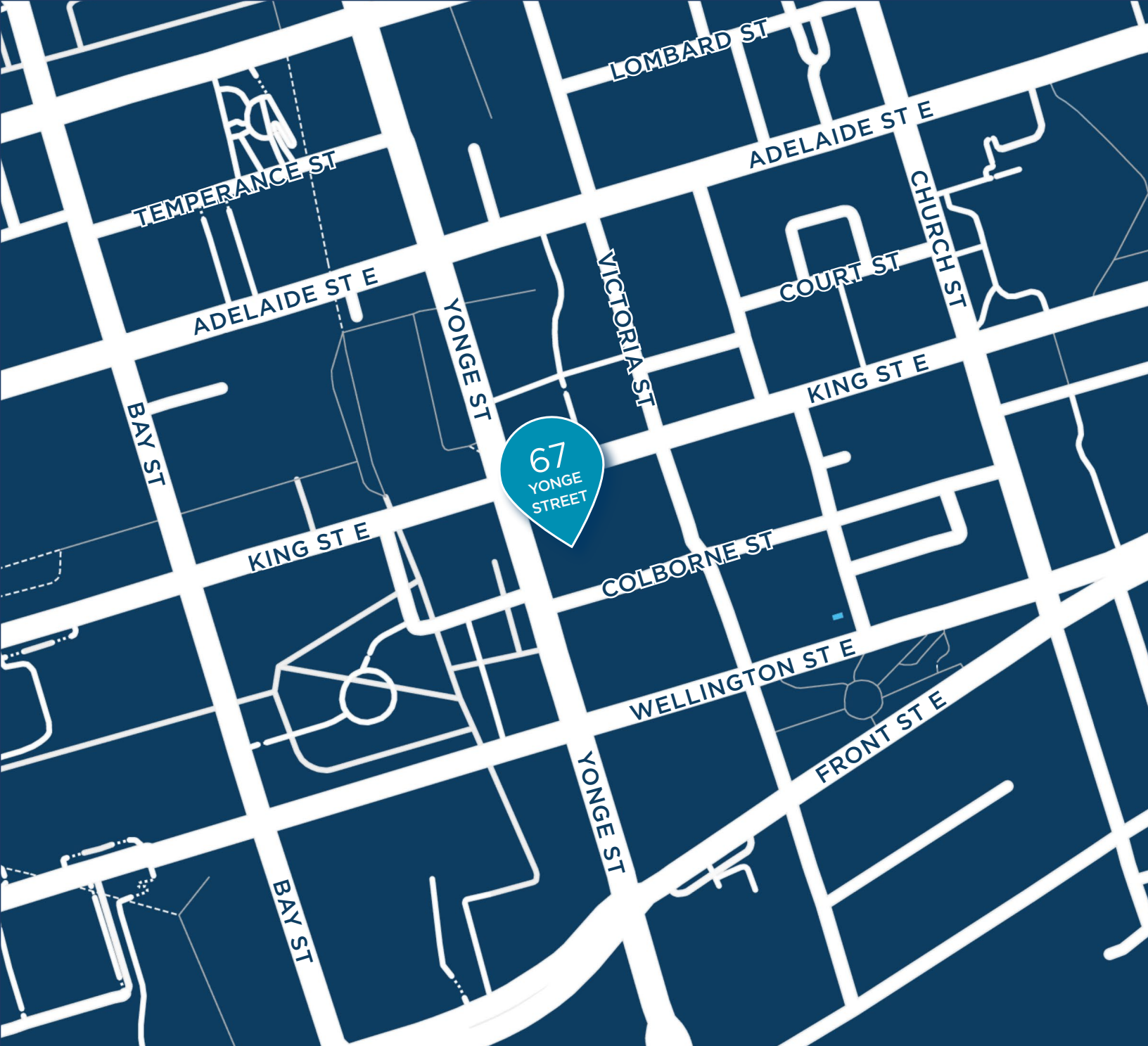
AVAILABILITY: Suite 200 - 7,088 SF

ASKING NET RENT: \$30.00 PSF

ADDITIONAL RENT: \$21.90 PSF (2024 EST.)

FLOOR PLAN





CONTACT

Riley Littlejohn

Senior Associate

D: +1 416 359 2444

M: +1 905 220 1277

riley.littlejohn@cushwake.com

Clarke Struthers

Vice President

D: +1 416 359 2451

M: +1 647 393 6385

clarke.struthers@cushwake.com

Cushman & Wakefield ULC., Brokerage

161 Bay Street, Suite 1500

Toronto, ON M5J 2S1

cushmanwakefield.com

©2024 Cushman & Wakefield. All rights reserved. The information contained in this communication is strictly confidential. This information has been obtained from sources believed to be reliable but has not been verified. NO WARRANTY OR REPRESENTATION, EXPRESS OR IMPLIED, IS MADE AS TO THE CONDITION OF THE PROPERTY (OR PROPERTIES) REFERENCED HEREIN OR AS TO THE ACCURACY OR COMPLETENESS OF THE INFORMATION CONTAINED HEREIN, AND SAME IS SUBMITTED SUBJECT TO ERRORS, OMISSIONS, CHANGE OF PRICE, RENTAL OR OTHER CONDITIONS, WITHDRAWAL WITHOUT NOTICE, AND TO ANY SPECIAL LISTING CONDITIONS IMPOSED BY THE PROPERTY OWNER(S). ANY PROJECTIONS, OPINIONS OR ESTIMATES ARE SUBJECT TO UNCERTAINTY AND DO NOT SIGNIFY CURRENT OR FUTURE PROPERTY PERFORMANCE.



**CUSHMAN &
WAKEFIELD**