

NEW CONSTRUCTION RETAIL FOR LEASE

900 E WILLIAMS ST

Apex, NC 27502



WYATT MATTINGLY
Broker
919.810.7430
wyatt@aspirenc.co

JAMIE DAWSON
Broker/Builder/Accredited Land Consultant
919.795.8776
jamie@aspirenc.com



PROPERTY SUMMARY

PROPERTY DESCRIPTION

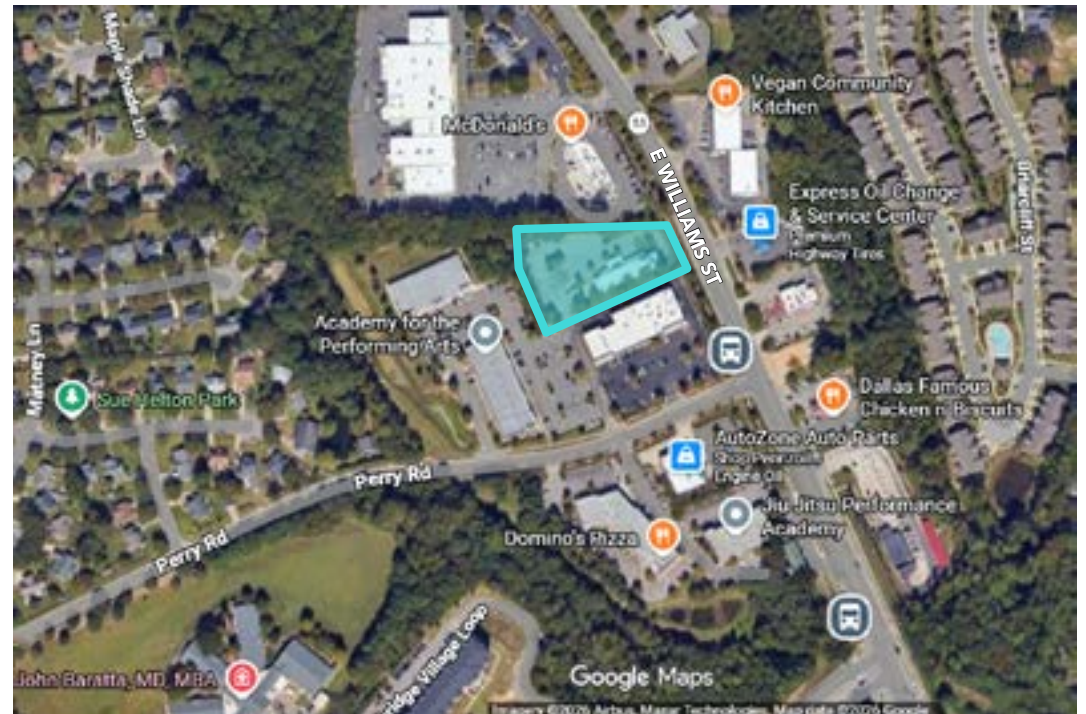
Position your business in one of Apex's most desirable and fast-growing corridors with this 2,833 SF new construction retail/service opportunity located in the heart of Apex, NC. Offered in dark shell condition, the space provides an exceptional opportunity for a tenant to create a custom buildout tailored to its brand, layout, and operational needs.

The property benefits from strong road visibility, convenient access, and close proximity to downtown Apex, placing it within a highly attractive trade area known for its steady growth, strong demographics, and a vibrant small-business environment. With ample on-site parking and a clean, modern new construction setting, this location is well positioned for businesses seeking both destination traffic and everyday convenience.

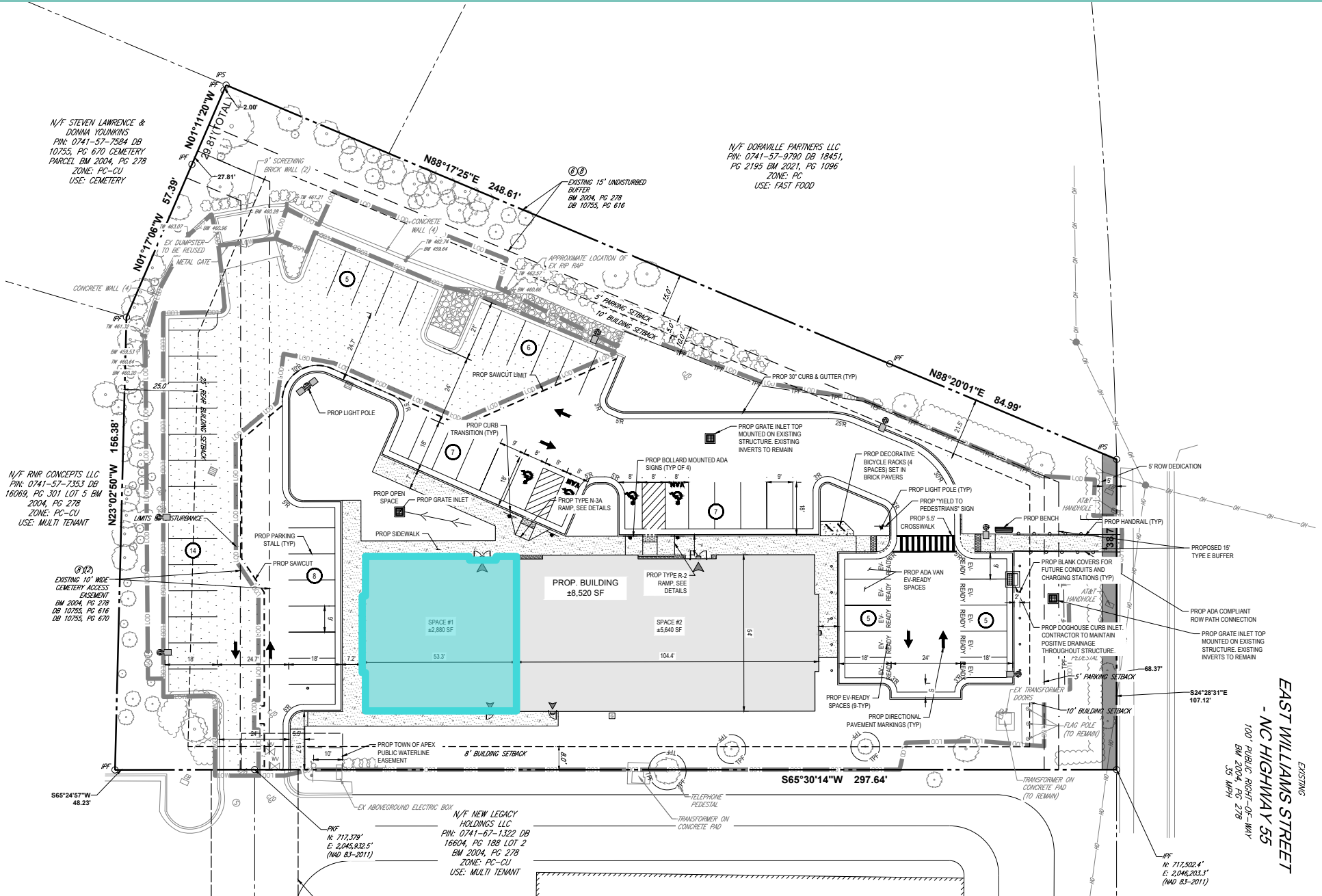
This opportunity is especially ideal for beauty, wellness, med spa, boutique fitness, personal service, and complementary retail users looking to establish themselves among other customer-focused, lifestyle-oriented businesses. The combination of visibility, accessibility, and location within one of the Triangle's most sought-after submarkets makes this a compelling opportunity for tenants looking to grow their presence in Apex.

HIGHLIGHTS

- o 2,833 SF available
- o Delivered in dark shell condition
- o New construction
- o Excellent road frontage and visibility
- o Ample parking
- o Located in the heart of Apex
- o Ideal for salon, med spa, wellness, fitness, boutique retail, and service users



SITE PLAN



RETAIL FOR LEASE | 900 E WILLIAMS ST | APEX, NC 27502



EAST WILLIAMS STREET
 - NC HIGHWAY 55
 EXISTING
 100' PUBLIC RIGHT-OF-WAY
 BM 2004, PG 278
 35' R/W

AREA OVERVIEW

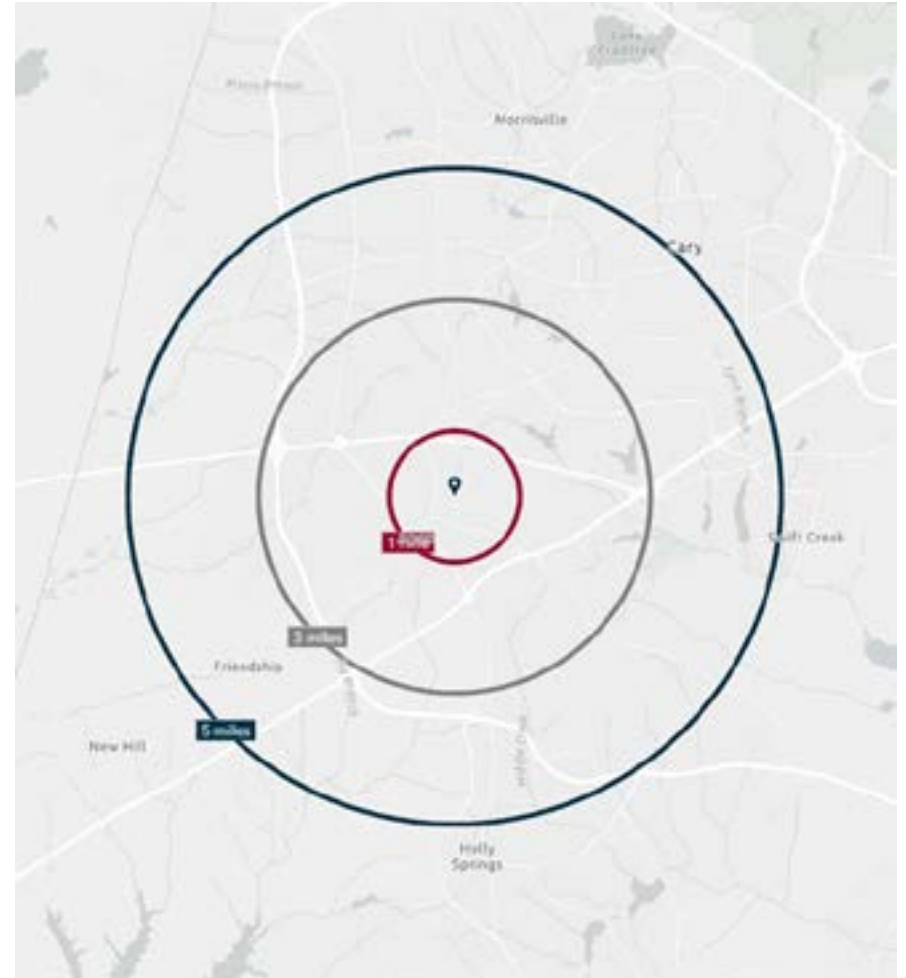


RETAIL FOR LEASE | 900 E WILLIAMS ST | APEX, NC 27502

DEMOGRAPHICS

	1 MILE	3 MILES	5 MILES
Population (2025)	8,796	65,352	178,683
Daytime Population	9,530	69,468	176,995
Average Home Value	\$529,597	\$593,861	\$639,064
Average Household Income	\$164,799	\$178,040	\$183,673
Median Age	39.5	39.9	40.1
Bachelor's Degree or Higher	66.0%	69.4%	71.8%
Total Businesses	576	2,654	6,716
Total Employees	5,191	28,109	64,545

*Data is an approximation based on the property area code



#1 BEST
County to live in NC (Wake)

Stacker, 2024

#2 HOTTEST
Real Estate Market (Raleigh)

US News & World Report, 2024

#3 BOOMTOWN
in North Carolina (Apex)

News & Observer, 2024

FOR LEASING INQUIRIES, CONTACT:

JAMIE DAWSON

Broker/Builder/Accredited Land Consultant

919.795.8776

jamie@aspirenc.com

WYATT MATTINGLY

Broker

919.810.7430

wyatt@aspirenc.com



Aspire

RE+DEV™