

TBD South James Street Humboldt, SD 57035

PROPERTY HIGHLIGHTS

- Brand new contractor shops
- Can combine spaces for larger suites
- Windowed office
- Bathroom
- Easy access to I-90
- Additional land available for storage
- 1 roll up door (14' x 16')
- 18' side wall height
- Construction will begin once 50% leased

LOCATION DESCRIPTION

Convenient location off of I-90 Humboldt exit.

Lease Rate	\$8.50 SF/YR
Lease Type	GROSS + UTILITIES
Suite Size	2,400 - 9,600 SF



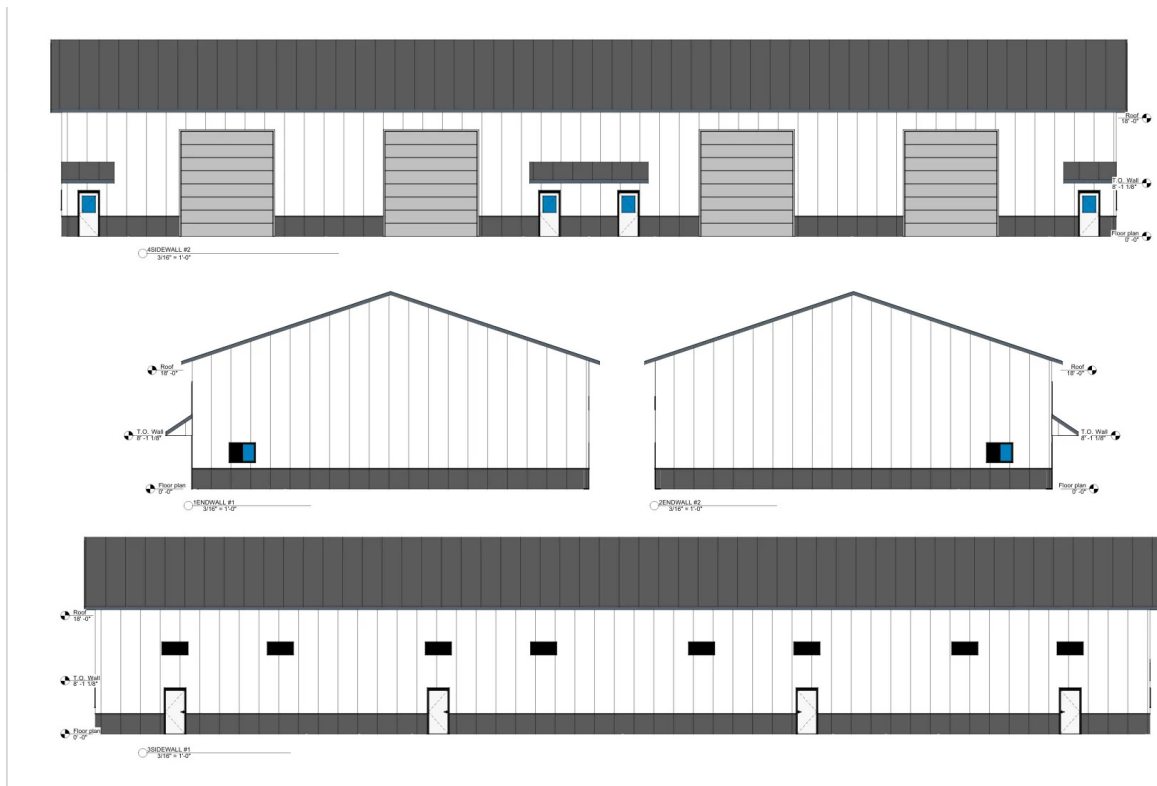
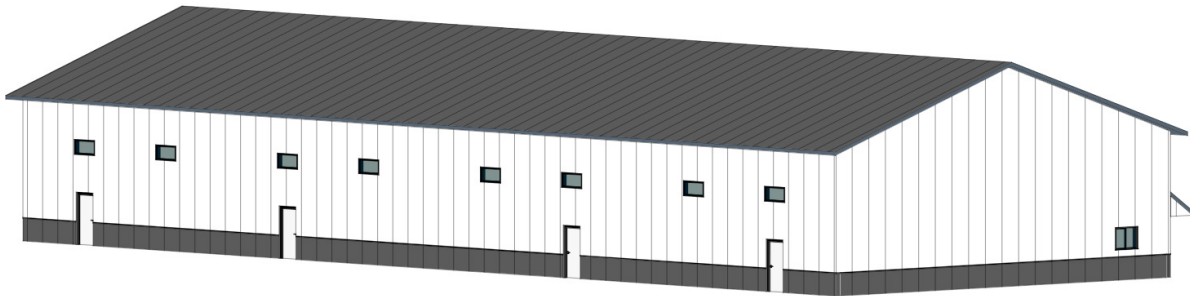
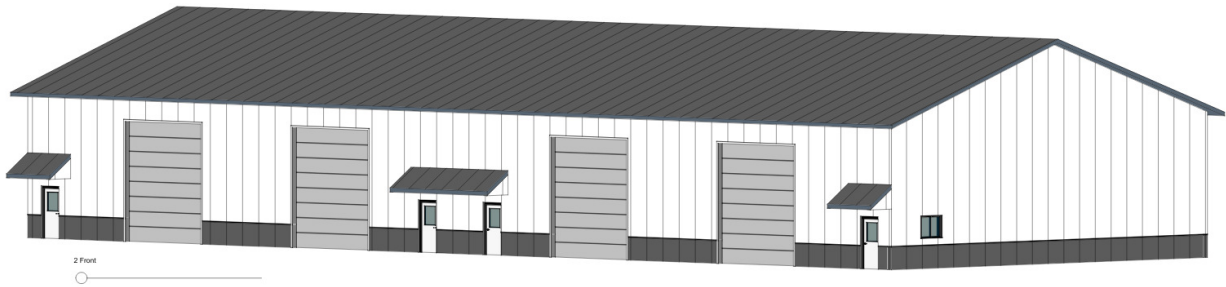
MICHAEL MARTIN, CCIM
Senior Vice President
mmartin@naisiouxfalls.com
605.261.2777

2500 W. 49th St. Suite 100
Sioux Falls, SD 57105
605.357.7100
naisiouxfalls.com

PHOTOS

HUMBOLDT CONTRACTOR SHOPS
TBD South James Street, Humboldt, SD 57035

FOR LEASE
Industrial Property

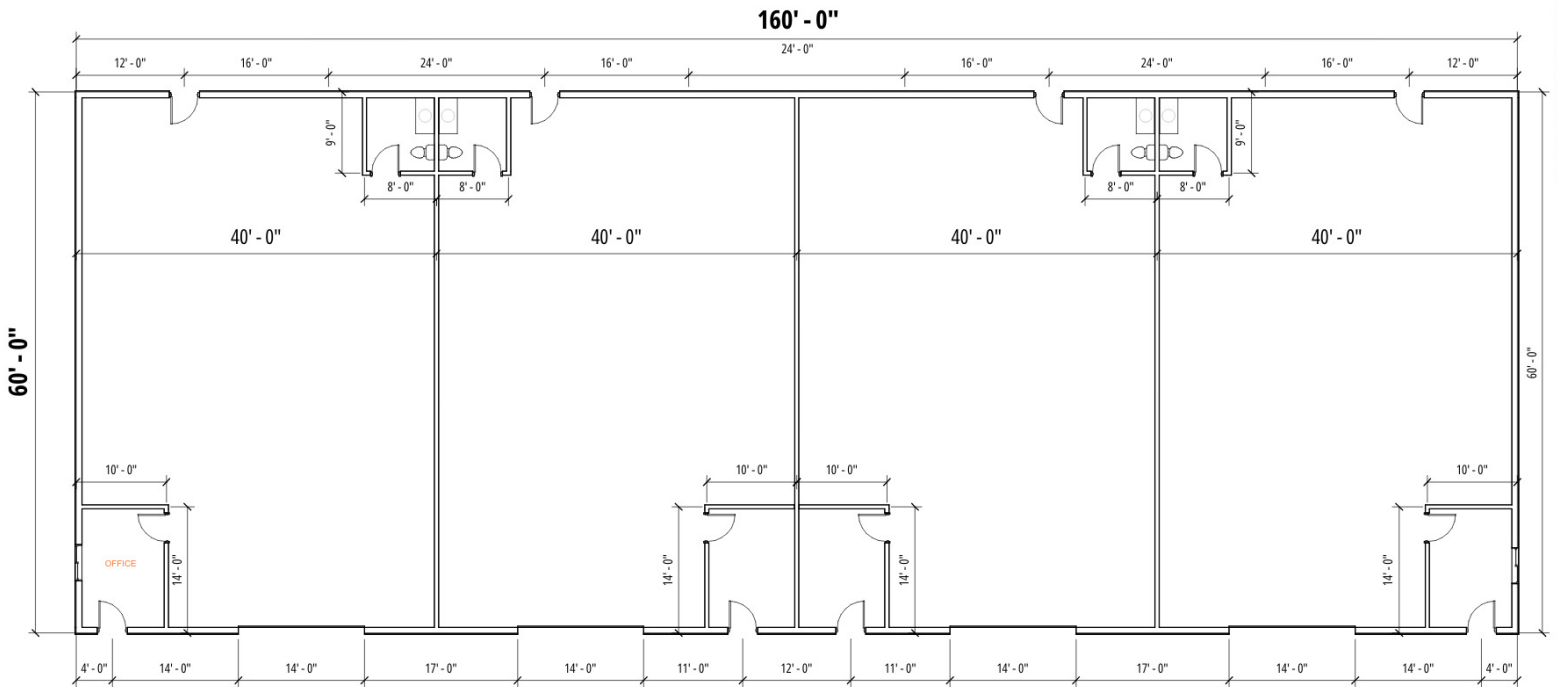


SITE & FLOOR PLAN

HUMBOLDT CONTRACTOR SHOPS
TBD South James Street, Humboldt, SD 57035

FOR LEASE

Industrial Property



1 Floor plan
1/8" = 1'-0"

AERIAL

HUMBOLDT CONTRACTOR SHOPS

TBD South James Street, Humboldt, SD 57035

FOR LEASE

Industrial Property



Map data ©2025 Imagery ©2025 Airbus, Maxar Technologies