

# AVISON YOUNG

**Office Suites Available For Lease**  
One Tower Bridge, Conshohocken, PA

## Best-in-class, Trophy Office in Prime Location

- Office Suites Available from 1,000 to up to 15,000± rentable square feet
- Nearby Amenities allows a live-work-play environment
- Located at the confluence of Interstate 76 and 476.
- Less than a five minute walk to SEPTA's Conshohocken train station, offering direct access to the Philadelphia CBD and 30th Street Station.



Central Conshohocken location



Exclusive fitness center



Building common training /  
conference facility with  
outdoor terrace



Private garage parking



Full service cafe

# CLASS A OFFICE SPACE FOR LEASE

One Tower Bridge Conshohocken, PA

AVISON  
YOUNG



# CLASS A OFFICE SPACE FOR LEASE

One Tower Bridge Conshohocken, PA

AVISON  
YOUNG

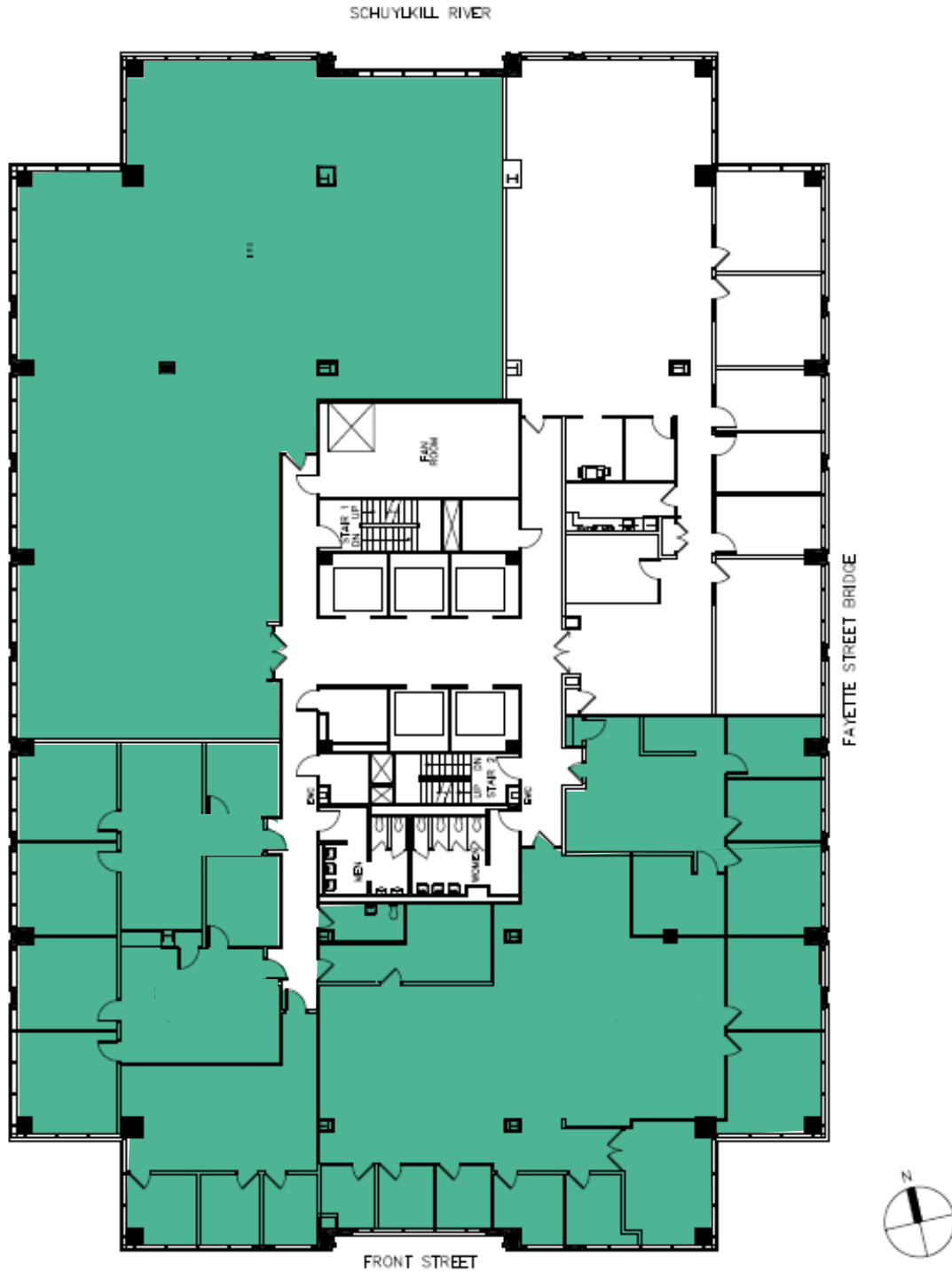
## Common Area Renovations



# CLASS A OFFICE SPACE FOR LEASE

One Tower Bridge Conshohocken, PA

Third Floor - Up to 15,000 rsf contiguous available



# CLASS A OFFICE SPACE FOR LEASE

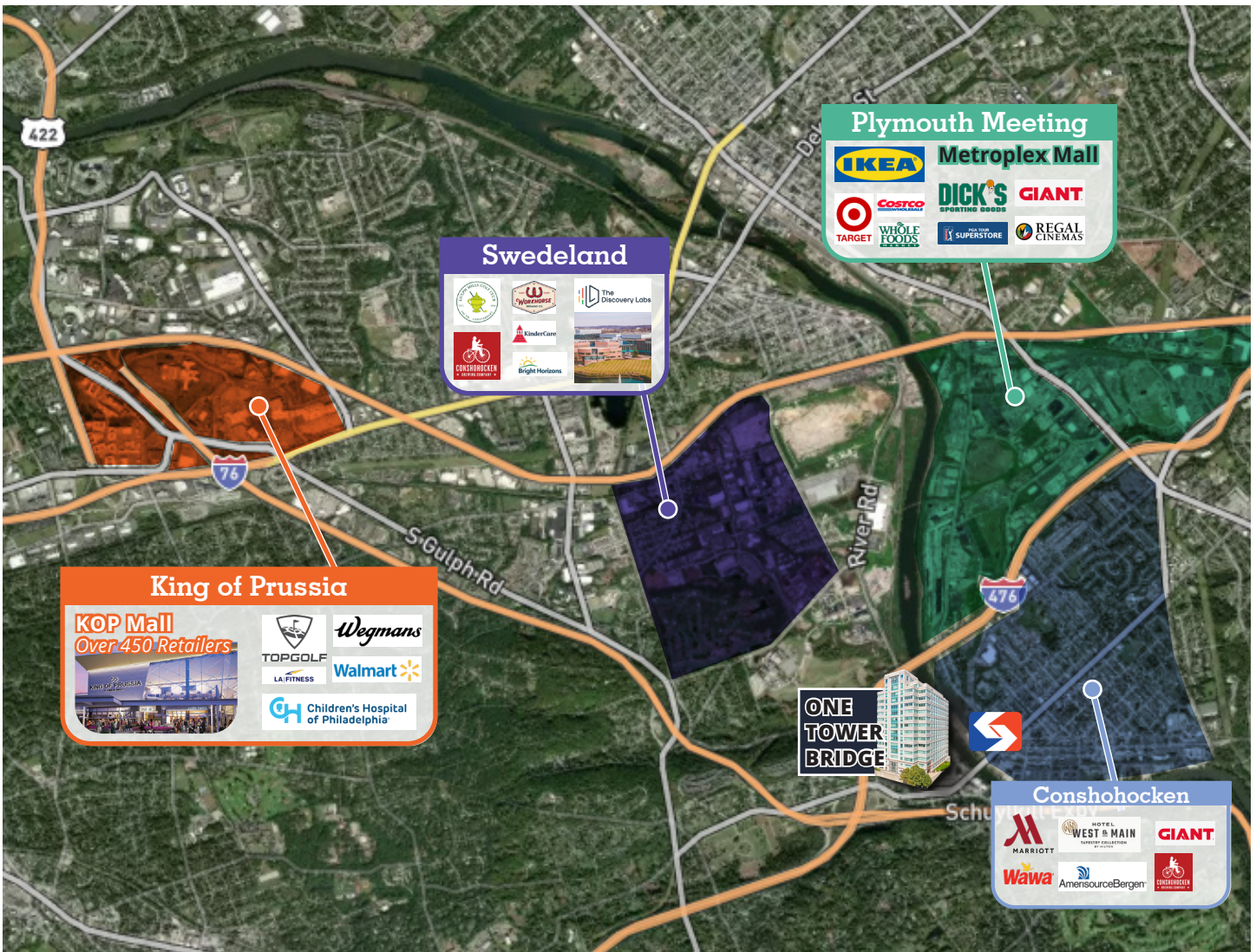
One Tower Bridge Conshohocken, PA



## Philadelphia's Premier Suburban Location

Conshohocken is Suburban Philadelphia's premier office market and features over 40 walkable restaurants, shops and boutiques. One Tower Bridge is centrally located with the most convenient access to the region's main interstates I-76 and I-476. The SEPTA regional rail station is just a short walk, providing the best commute for the region's workforce and executives. Enjoy a walk or bike ride on the Schuylkill River Trail and beautiful views of the river. Conshohocken was named the Best Suburban Neighborhood for Millennials and Fayette Street has become Montgomery County's hottest dining destination.

*One Tower Bridge is the gateway to this true Live-Work-Play community.*



*\*Selected Amenities // Retailers. Does not include all nearby locations*

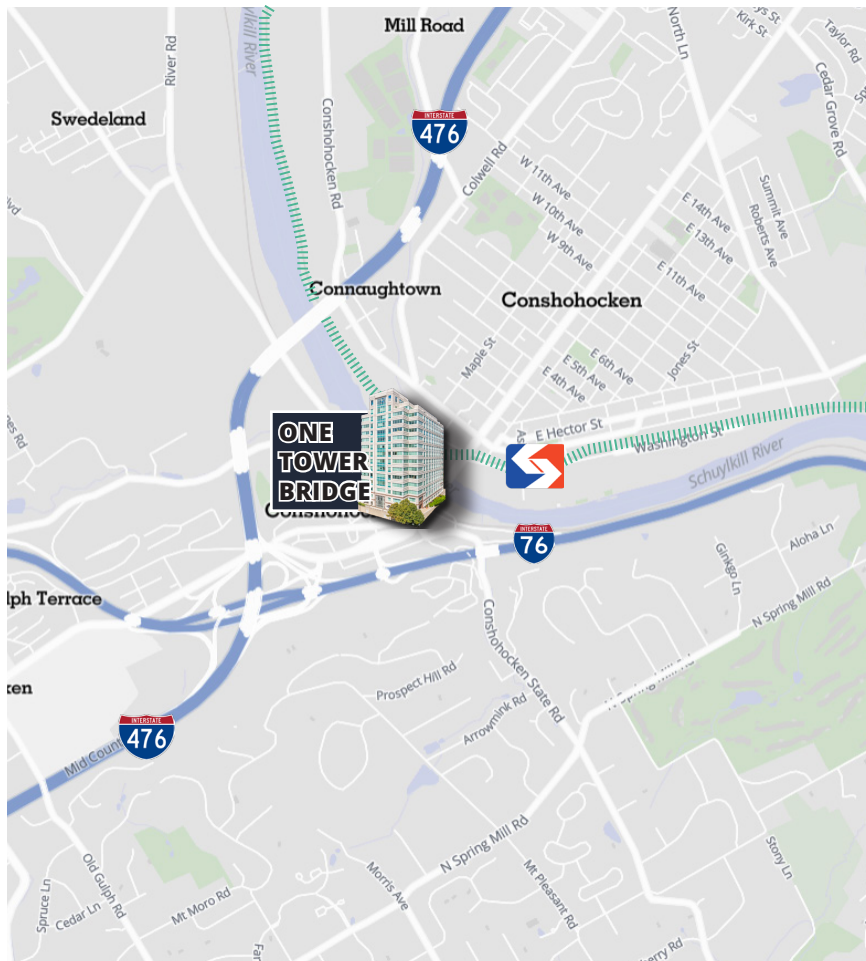
# CLASS A OFFICE SPACE FOR LEASE

One Tower Bridge Conshohocken, PA

AVISON  
YOUNG



## Class A Office Space in Prime Conshohocken



### Get more information:

**Ken Kearns**  
Principal  
610 639 1302  
[ken.kearns@avisonyoung.com](mailto:ken.kearns@avisonyoung.com)

**Brendan Kelley**  
Principal  
215 820 3828  
[brendan.kelley@avisonyoung.com](mailto:brendan.kelley@avisonyoung.com)

AVISON  
YOUNG

BUCCINI  
POLLIN  
GROUP