

**FOR
SALE**



2022 Murchison

El Paso, Texas 79902

Roland Correa
Commercial Broker
(915) 328-9992

roland@rcproperties-elp.com
www.rcproperties-elp.com

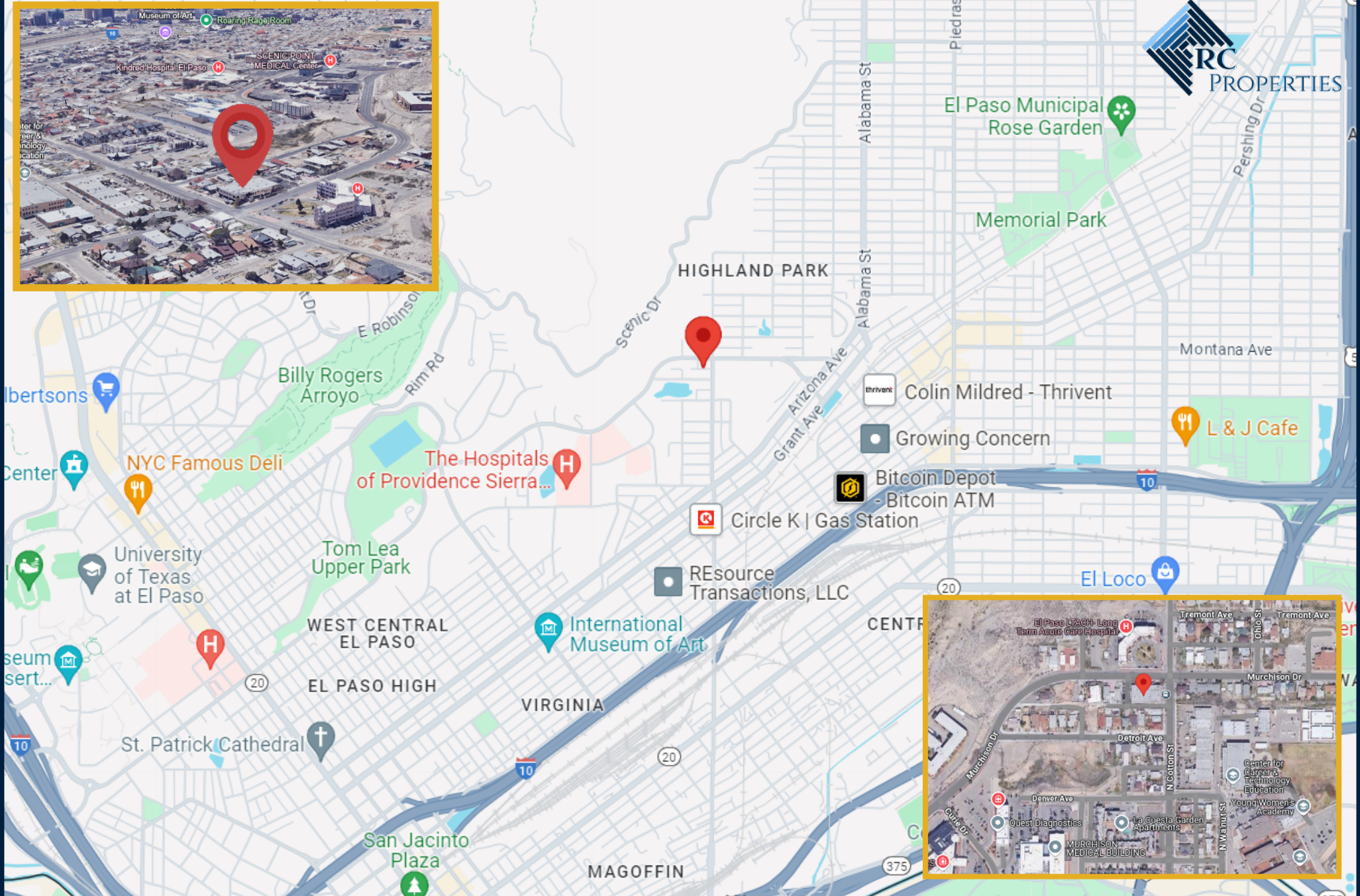
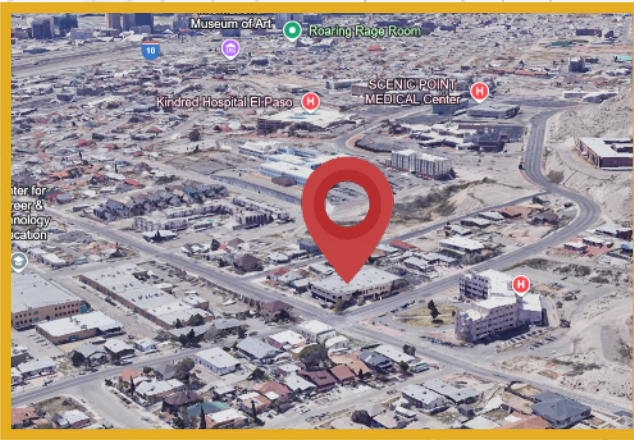
Sales Price: 2.9 Million

PROPERTY HIGHLIGHTS

- Building Size: 14,285 sf
- Lot Size: 27,000 sf
- Total Parking Spaces: 69
 - Covered: 38

Medical/Professional office in the heart of Central El Paso on Murchison next to the Hospitals of Providence Sierra Campus with easy access to I-10. Spaces are move in ready and the property has underground covered parking. Perfect for a doctor, dentist, or professional office space.





2022 Murchison El Paso, TX 79902

Roland Correa
 Commercial Broker
 (915) 328-9992
 roland@rcproperties-elp.com
 www.rcproperties-elp.com

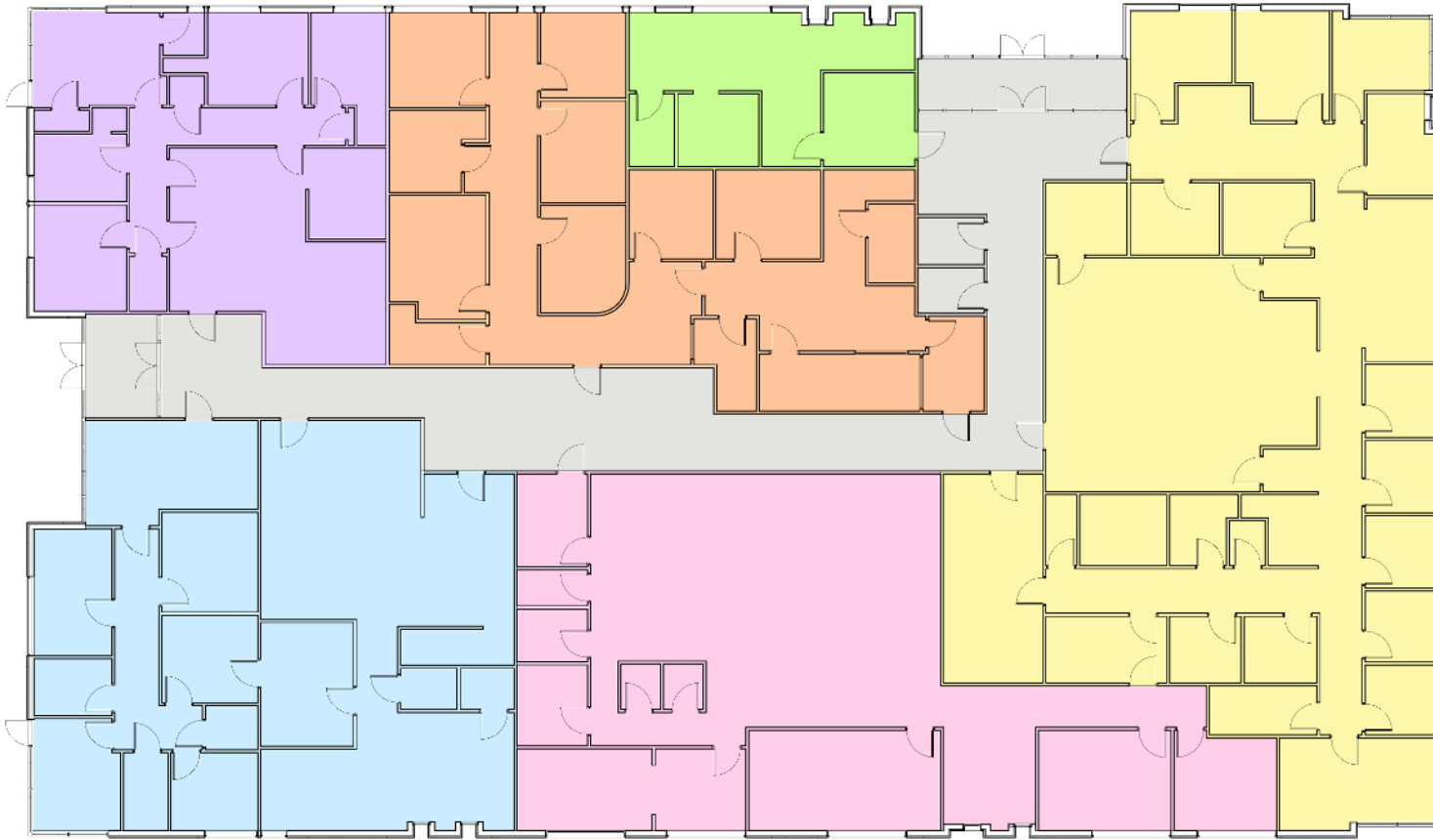


2022 Murchison, El Paso, TX 79902

Roland Correa
Commercial Broker
(915) 328-9992
roland@rcproperties-elp.com
www.rcproperties-elp.com

LEGEND

	SUITE A 2,400 SF
	SUITE B 2,570 SF
	SUITE C 3,307 SF
	SUITE D 275 SF
	SUITE E 2,113 SF
	SUITE F 1,457 SF
	CIRCULATION/SUPPORT SPACES 1,586 SF
TOTAL SF: 14,428	



01 2022 MURCHISON DR. - EXISTING FLOOR PLAN

A12.00 / SCALE: 1/8" = 1'-0"
0 5' 10' 20'



2022 Murchison, El Paso, TX 79902

Roland Correa
Commercial Broker
(915) 328-9992
roland@rcproperties-elp.com
www.rcproperties-elp.com