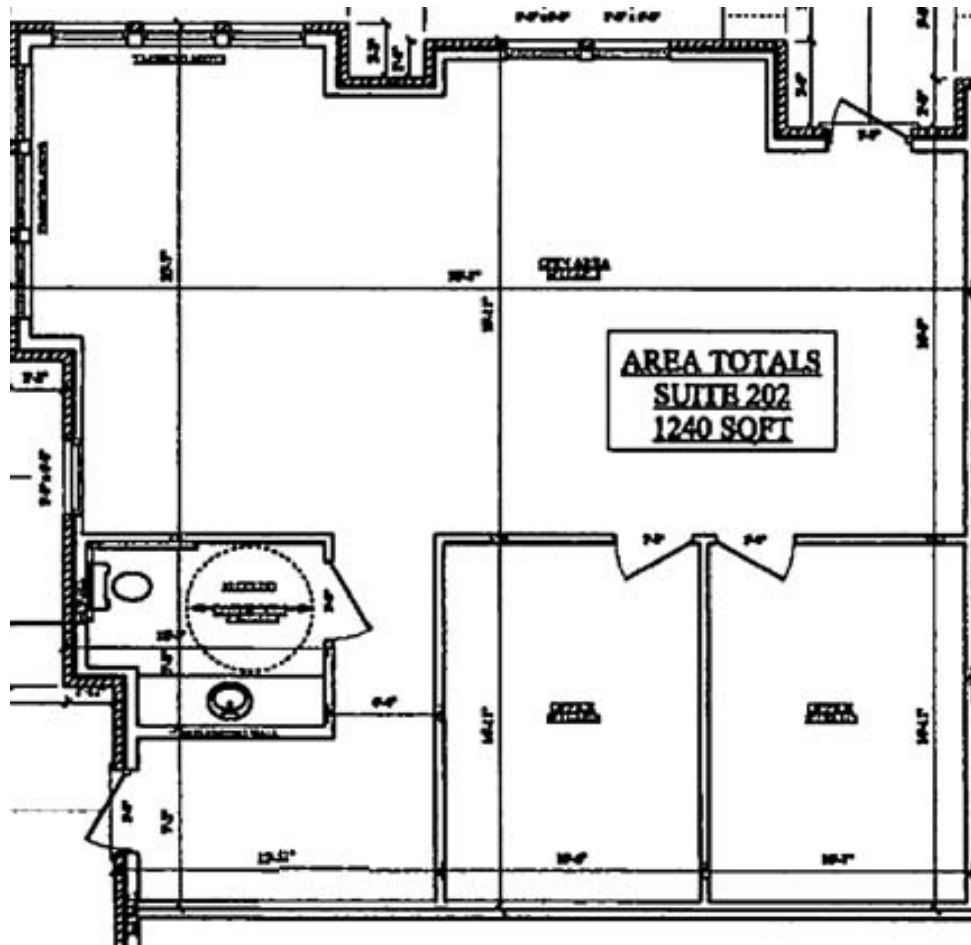


Capital Property Advisors

Commercial/Investment
Real Estate

FLOOR PLAN

1003 Legacy Ranch Rd, Suite 202
1,240 sf



For More Information:

Tony Gilbert

214-368-9999 Main

214-394-7414 Direct

tgilbert@cpacre.com

Tony Gilbert-Direct:214-699-8898-Phone:214-368-9999-Email:tgilbert@cpacre.com

Information contained herein was obtained from sources deemed reliable; however, Capital Property Advisors, makes no guarantees, warranties, or representations as to the completeness or accuracy hereof. The presentation of property is submitted subject to errors, omissions, change in price or conditions, prior sale or lease, or withdrawal without notice.