

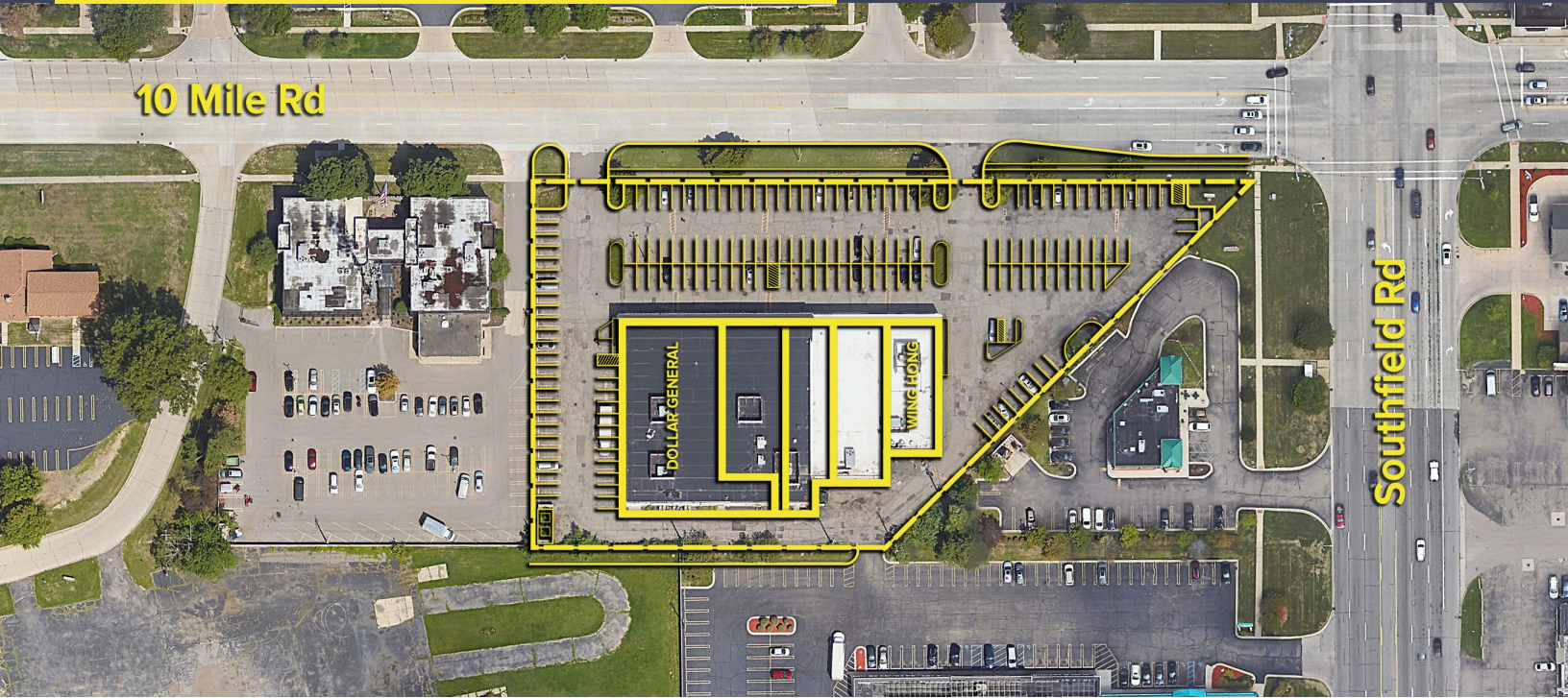
18203-18235 W. TEN MILE ROAD  
SOUTHFIELD, MICHIGAN



**SIGNATURE  
ASSOCIATES**  
KNOW SIGNATURE | KNOW RESULTS

RETAIL FOR LEASE

2,600 – 8,800 Square Feet Available



## PROPERTY FEATURES

- 2,600 – 8,800 square feet available
- Excellent for retail, restaurant or medical in a neighborhood plaza
- Tremendous main road visibility with ample parking
- 162 parking spaces
- Join Wing Hong Restaurant & Dollar General
- New façade coming 2024
- Lease Rate: \$17.00/sq. ft. NNN



For more information, please contact:

**MARVIN PETROUS**

(248) 359 0647

[mpetrous@signatureassociates.com](mailto:mpetrous@signatureassociates.com)

**BRUCE D. BAJA**

(248) 799 3177

[bbaja@signatureassociates.com](mailto:bbaja@signatureassociates.com)

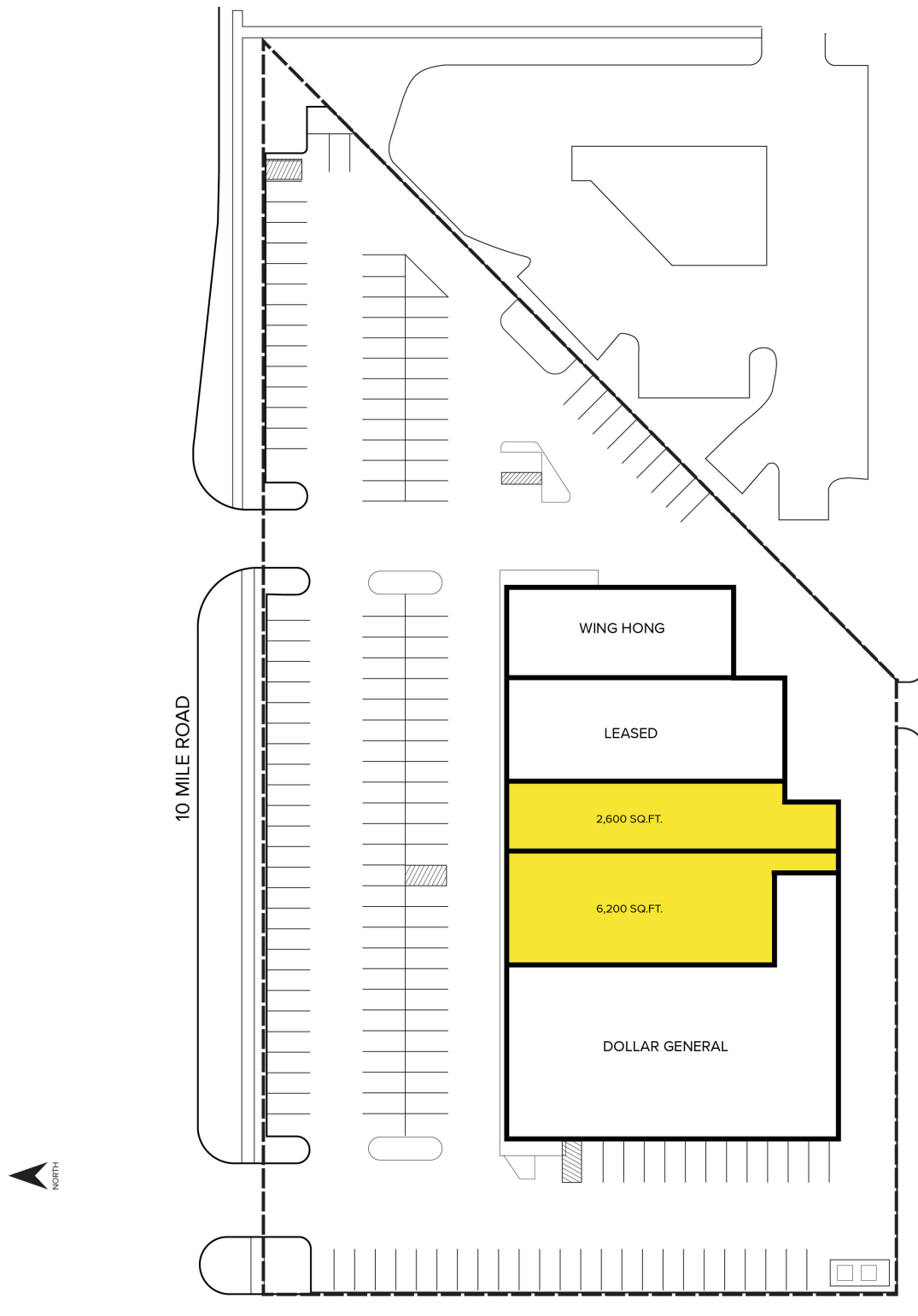
**SIGNATURE ASSOCIATES**

One Towne Square, Suite 1200

Southfield, MI 48076

[www.signatureassociates.com](http://www.signatureassociates.com)

Site Plan



For more information, please contact:

**MARVIN PETROUS**

(248) 359 0647

mpetrous@signatureassociates.com

**BRUCE D. BAJA**

(248) 799 3177

bbaja@signatureassociates.com

**SIGNATURE ASSOCIATES**

One Towne Square, Suite 1200

Southfield, MI 48076

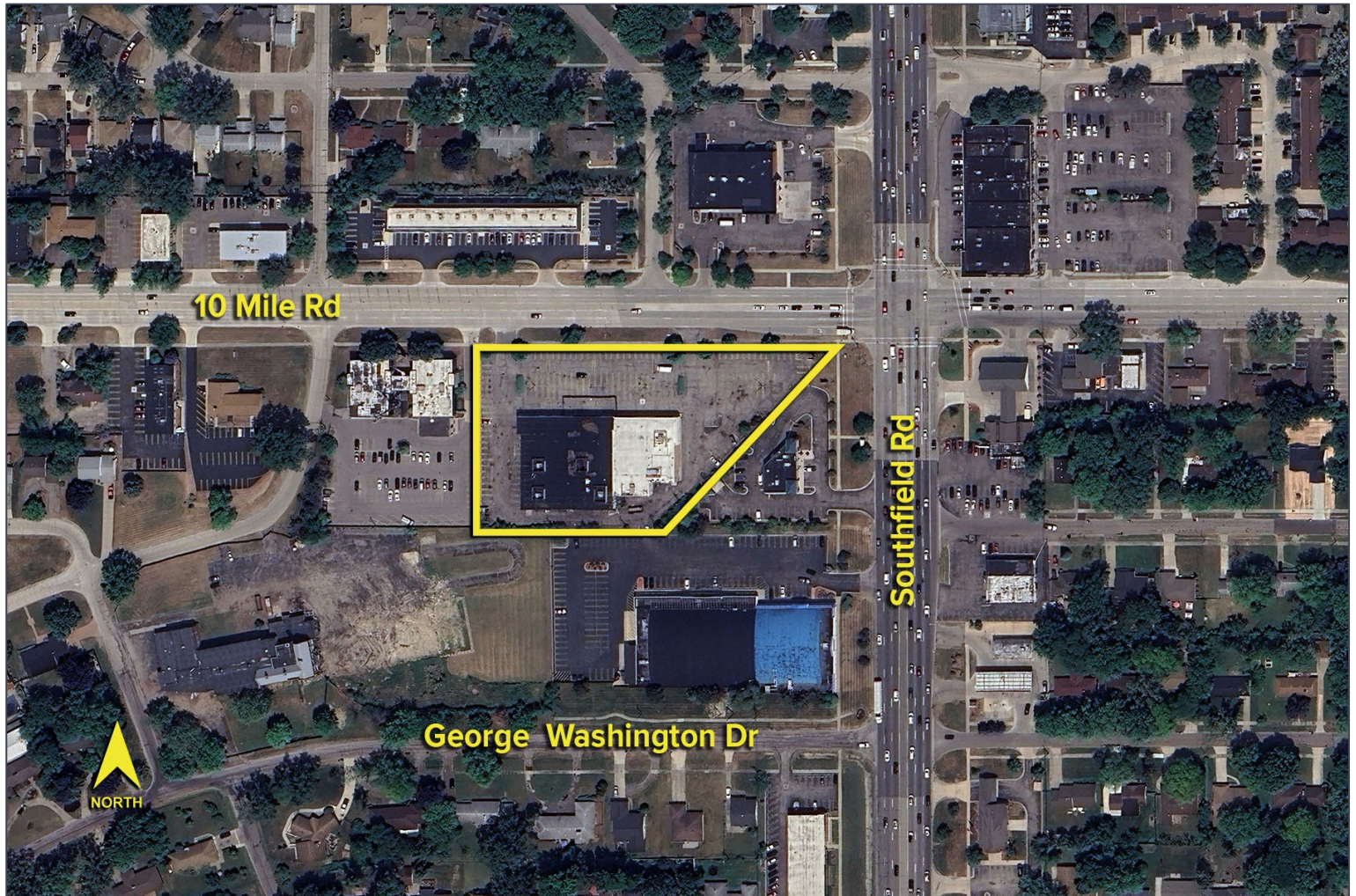
www.signatureassociates.com

18203 – 18235 W. Ten Mile Road – Southfield, MI

Retail For Lease

2,600 – 8,800  
Square Feet  
AVAILABLE

Aerial



For more information, please contact:

**MARVIN PETROUS**

(248) 359 0647

[mpetrous@signatureassociates.com](mailto:mpetrous@signatureassociates.com)

**BRUCE D. BAJA**

(248) 799 3177

[bbaja@signatureassociates.com](mailto:bbaja@signatureassociates.com)

**SIGNATURE ASSOCIATES**

One Towne Square, Suite 1200

Southfield, MI 48076

[www.signatureassociates.com](http://www.signatureassociates.com)

Information is subject to verification and no liability for errors or omissions is assumed. Price is subject to change and listing withdrawal.