

For Lease

CBRE

Southridge Retail Center

Costco Shadow Strip Center

121st & Metcalf (NWC) | Overland Park, Kansas 66062 | www.cbre.com



Property Details

- + Major retail corridor minutes from Aspiria, Black & Veach Headquarters, Century Link Headquarters
- + Co tenants include Sonic, Club Car Wash and many more
- + Excellent demographics and traffic counts
- + Newly built in 2008 directly across the street from Costco
- + Six vacancies available ranging from 873 SF - 6,740 SF
- + Can provide up to 12,034 sf contiguous

Retail

Aerial



Demographics

1 Mile Radius

Population	8,450
Average Household Income	\$133,318

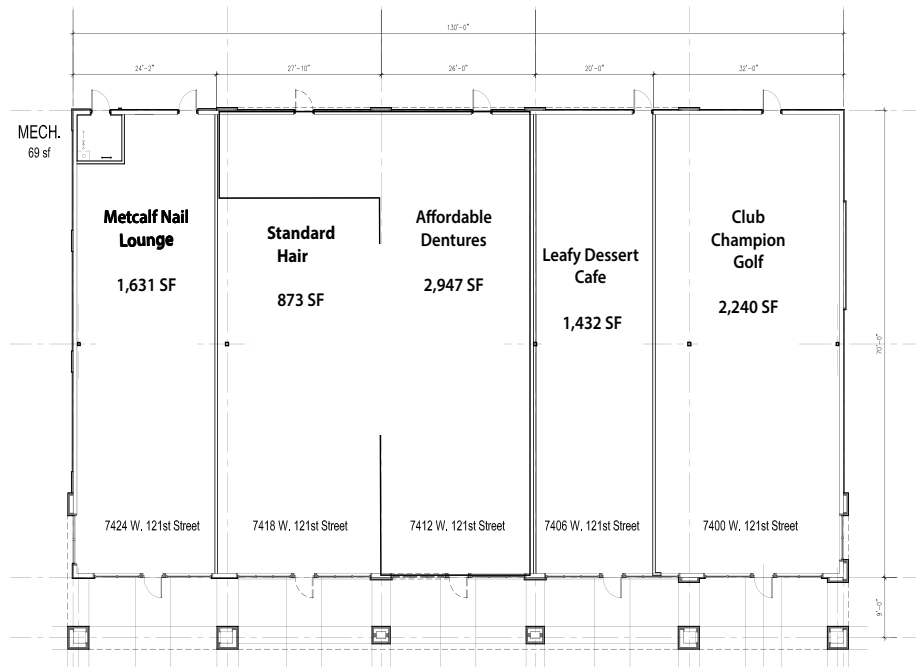
3 Mile Radius

Population	86,302
Average Household Income	\$163,853

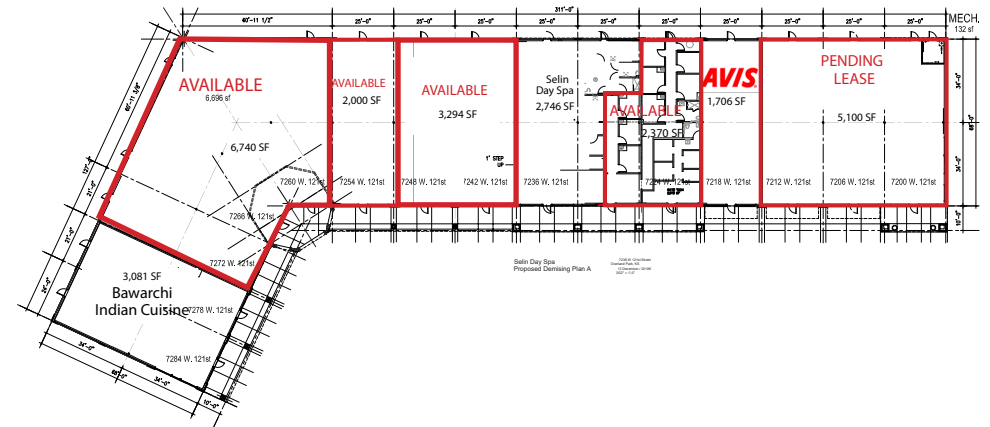
5 Mile Radius

Population	240,768
Average Household Income	\$162,865

Site Plan



Building A



Building B



Contact Us

Matt Rau
Vice President
+1 314 650 4170
matt.rau@cbre.com

Lindy Beyer
Vice President
+1 816 448 1242
lindy.beyer@cbre.com

Madi Bremer
Associate
+1 816 660 1522
madi.bremer@cbre.com

© 2025 CBRE, Inc. All rights reserved. This information has been obtained from sources believed reliable but has not been verified for accuracy or completeness. CBRE, Inc. makes no guarantee, representation or warranty and accepts no responsibility or liability as to the accuracy, completeness, or reliability of the information contained herein. You should conduct a careful, independent investigation of the property and verify all information. Any reliance on this information is solely at your own risk. CBRE and the CBRE logo are service marks of CBRE, Inc. All other marks displayed on this document are the property of their respective owners, and the use of such marks does not imply any affiliation with or endorsement of CBRE. Photos herein are the property of their respective owners. Use of these images without the express written consent of the owner is prohibited.