

COMMERCIAL/RETAIL BUILDING FOR SALE



1821 COUNTY STREET

Somerset, MA 02726

DAN FEINER

Vice President
401.751.3200 x3310
dan@mgcommercial.com

GEORGE PASKALIS, SIOR

Partner
401.751.3200 x3303
george@mgcommercial.com

MG COMMERCIAL

365 Eddy Street, Penthouse Suite
Providence, RI 02903
401.751.3200 | mgcommercial.com

EXECUTIVE SUMMARY



PROPERTY DESCRIPTION

4,300 SF 2-level commercial building with 3-bay garage licensed for auto-repair/service, auto-dealership, and car rental. The garage is equipped with multiple lifts and compressors. Additionally, the building offers plug-and-play office space on the 2nd level that can be used by the owner or leased to tenants. This flexible and versatile building is situated on a 17,640 SF (0.40 ac) parcel with storefront parking, pylon signage, and great visibility.

PROPERTY HIGHLIGHTS

- 4,300 SF 2-Level Commercial Building
- Ideal Auto Repair/Dealership/Contractor
- Highly Visible Pylon Signage Available
- Multiple Overhead Doors/Service Areas
- Second Floor Office Space
- Well Travelled Commercial Corridor

LOCATION DESCRIPTION

The subject property is well located on the highly visible County Street (RT 138) at the intersection of Marble Street and is only 15 minutes from Fall River and the Swansea Mall. County Street is a core retail and commercial corridor within Somerset, MA, with a traffic count of over 9,200 cars per day. The property has significant frontage with two curb cuts and is ideal for its current auto use or for redevelopment.

OFFERING SUMMARY

Sale Price:	\$1,195,000
Building Size:	4,300 SF
Lot Size:	17,640 SF

DEMOGRAPHICS

	2 MILES	3 MILES	5 MILES
Total Households	8,587	16,084	46,630
Average HH Income	\$113,199	\$109,807	\$89,794

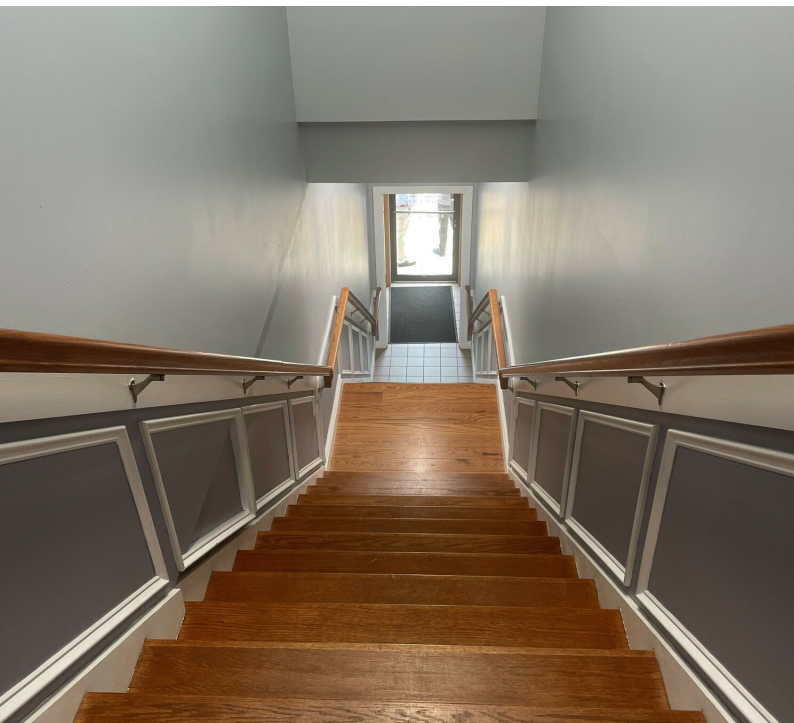
DAN FEINER
Vice President
401.751.3200 x3310
dan@mgcommercial.com

GEORGE PASKALIS, SIOR
Partner
401.751.3200 x3303
george@mgcommercial.com

365 Eddy Street, Penthouse Suite
Providence, RI 02903
mgcommercial.com



ADDITIONAL PHOTOS



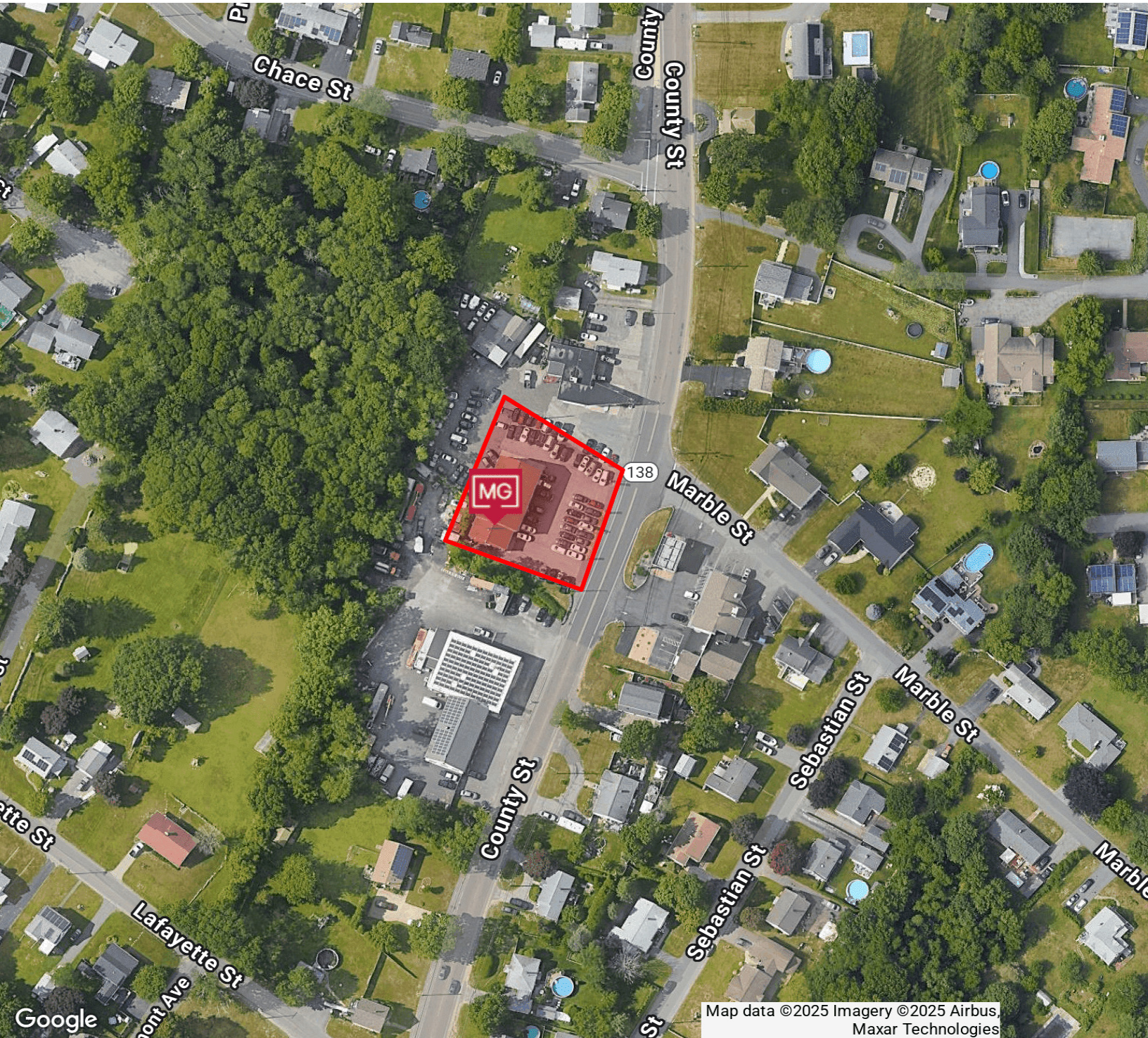
DAN FEINER
Vice President
401.751.3200 x3310
dan@mgcommercial.com

GEORGE PASKALIS, SIOR
Partner
401.751.3200 x3303
george@mgcommercial.com

365 Eddy Street, Penthouse Suite
Providence, RI 02903
mgcommercial.com



AREA MAP



Map data ©2025 Imagery ©2025 Airbus, Maxar Technologies

DAN FEINER
 Vice President
 401.751.3200 x3310
 dan@mgcommercial.com

GEORGE PASKALIS, SIOR
 Partner
 401.751.3200 x3303
 george@mgcommercial.com

 365 Eddy Street, Penthouse Suite
 Providence, RI 02903
 mgcommercial.com

