

# THE WALLER EXCHANGE

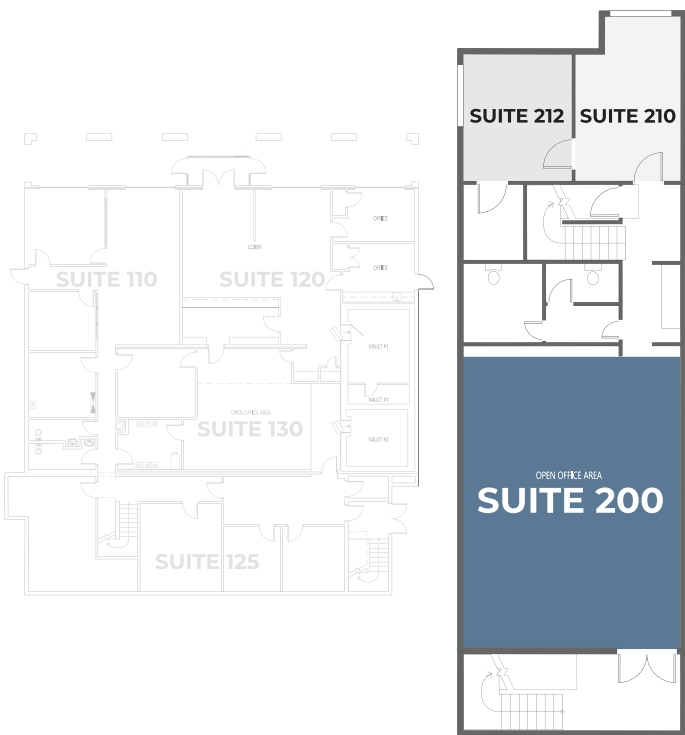
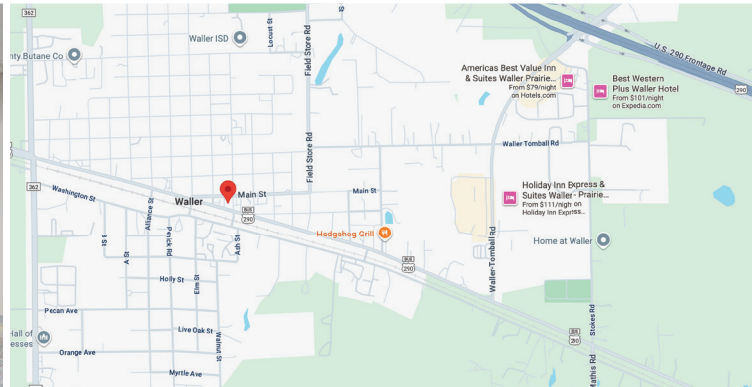


O  
F  
F  
I  
C  
E  
S  
P  
A  
C  
E

NOW LEASING

SUITE 200

2313 MAIN ST. WALLER, TX



## LEASE INFORMATION

TYPE: NNN

TERM: 1-5 YEARS

DISCLAIMER: THESE NUMBERS REFLECT WHAT IS CURRENTLY AVAILABLE FOR LEASE AND DO NOT DESCRIBE THE TOTAL SQUARE FOOTAGE

## PROPERTY HIGHLIGHTS

+/- 635 SQ. FT.

COMMON AREA BATHROOMS ON BOTH 1ST AND 2ND FLOORS

2 SEPARATE ENTRANCES

PERFECT SIXES FOR OFFICE PARTITIONS

WALLER CHAMBER OF COMMERCE AT YOUR DOORSTEP

WALLER ECONOMIC DEVELOPMENT CORP. AT YOUR DOORSTEP

CONTACT US IF YOU HAVE ANY QUESTIONS OR TO SCHEDULE A TOUR



936-284-5836