

5000 W Oakey

Las Vegas, NV 89146

Industrial for Lease

1,077 – 3,285 SF



Leasing Information: 702.221.8226

Ali Roesener, SIOR
NRE:S.0172338
Senior Vice President
(702) 765-8894
Ali.Roesener@lpc.com

Tony Alvarez
NRE:S.0200369
Associate
(702) 765-8880
Tony.Alvarez@lpc.com

Lincoln

4755 Dean Martin Drive
Las Vegas, NV 89013

www.lpc.com

5000 W Oakey

Las Vegas, NV 89146

Industrial for Lease



Ali Roesener, SIOR
(702) 765-8894
Ali.Roesener@lpc.com

Tony Alvarez
(702) 765-8880
Tony.Alvarez@lpc.com

Lincoln

5000 W Oakey

Las Vegas, NV 89146

Industrial for Lease

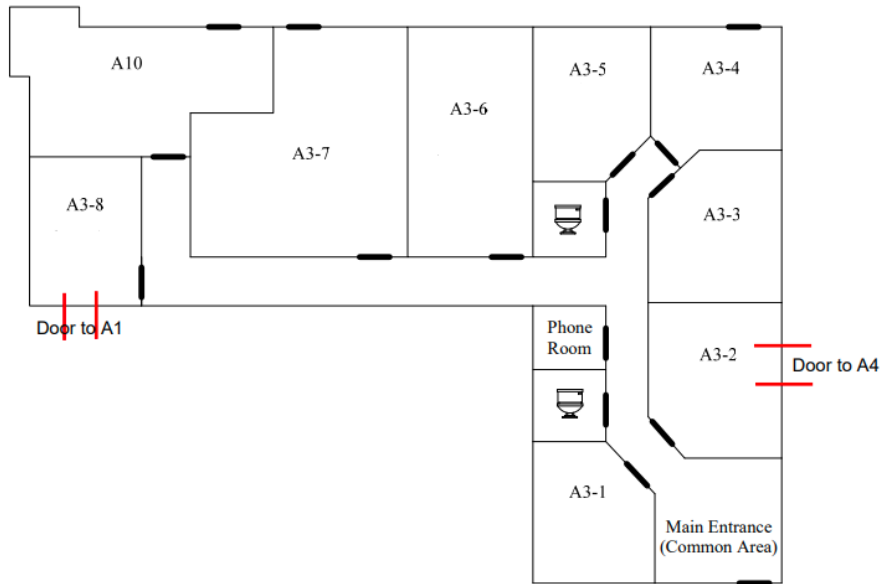
| Address | Square Feet | Office | Warehouse | Grade | Asking | CAM | Lease Type | Total Monthly |
|-------------------|-------------|--------|-----------|-------|--------|--------|------------|---------------|
| Building A | | | | | | | | |
| A3 | 2,845 | 2,845 | 0 | N/A | \$0.90 | \$0.32 | NNN | \$3,470.90 |
| A7 | 1,024 | 1,024 | 0 | N/A | \$1.20 | \$0.32 | NNN | \$1,556.48 |
| Building C | | | | | | | | |
| C – 4 , 5 | 2,829 | 0 | 2,829 | 2G | \$1.00 | \$0.32 | NNN | \$3,734.28 |
| C – 7 | 1,410 | 258 | 1,152 | 1G | \$1.15 | \$0.32 | NNN | \$2,072.70 |
| C – 9 | 1,320 | 247 | 1,073 | 1G | \$1.15 | \$0.32 | NNN | \$1,940.40 |
| Building D | | | | | | | | |
| D – 14 | 1,430 | 258 | 1,203 | 1G | \$1.15 | \$0.32 | NNN | \$2,102.10 |
| D – 15, 16 | 3,058 | 313 | 2,745 | 2G | \$0.93 | \$0.32 | NNN | \$3,822.50 |
| D – 17 | 1,425 | 258 | 1,167 | 1G | \$1.15 | \$0.32 | NNN | \$2,094.75 |
| Building E | | | | | | | | |
| E – 5 | 1,077 | 219 | 858 | 1G | \$1.15 | \$0.32 | NNN | \$1,583.19 |
| E – 10, 11 | 3,285 | 414 | 2,871 | 2G | \$0.93 | \$0.32 | NNN | \$4,106.25 |

Ali Roesener, SIOR
(702) 765-8894
Ali.Roesener@lpc.com

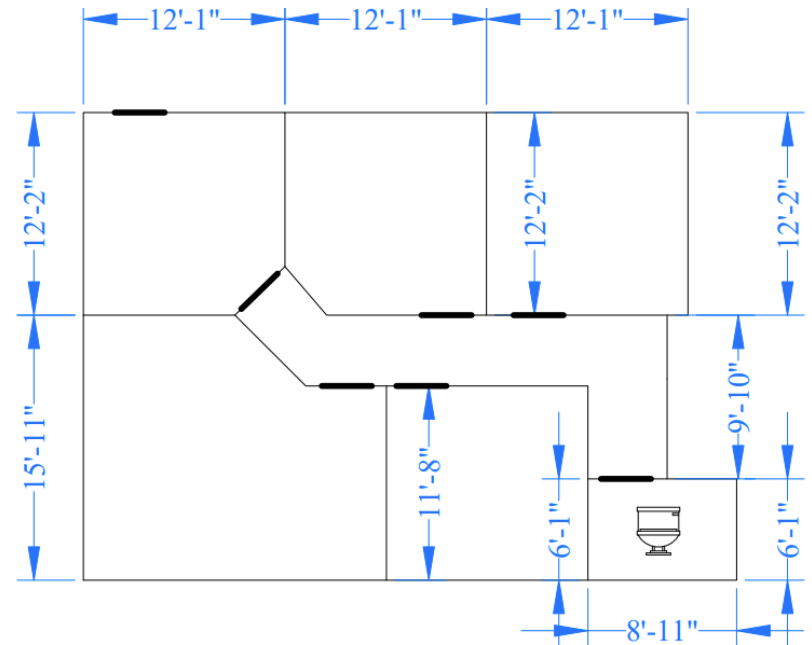
Tony Alvarez
(702) 765-8880
Tony.Alvarez@lpc.com

Lincoln

Building A Available Floorplans



Suite #A - 3 Suites



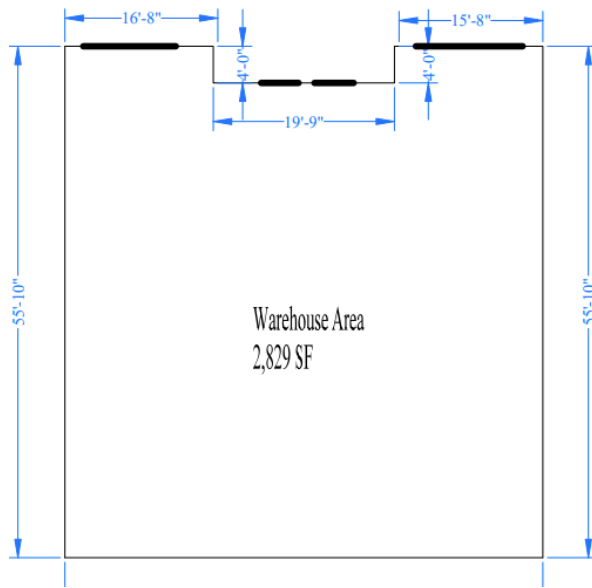
Suite #A - 7

Ali Roesener, SIOR
(702) 765-8894
Ali.Roesener@lpc.com

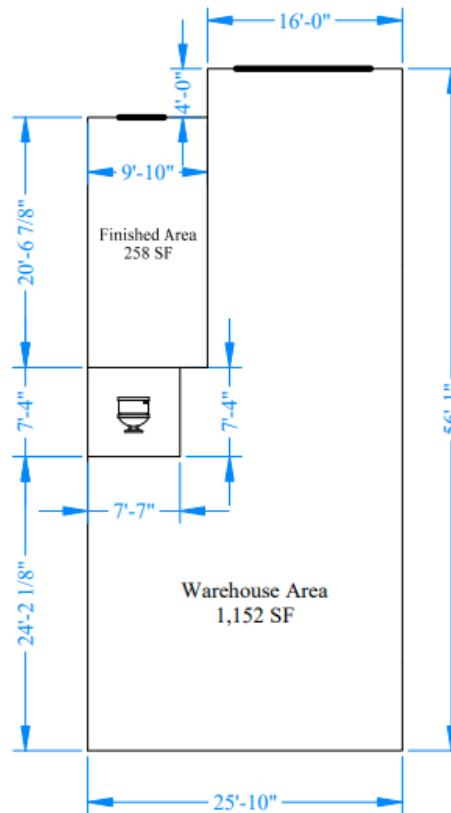
Tony Alvarez
(702) 765-8880
Tony.Alvarez@lpc.com

Lincoln

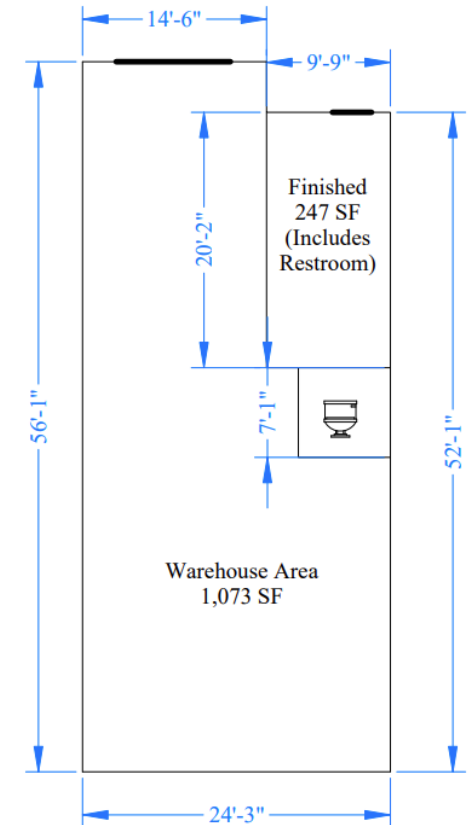
Building C Available Floorplans



Suite #4, 5



Suite #7



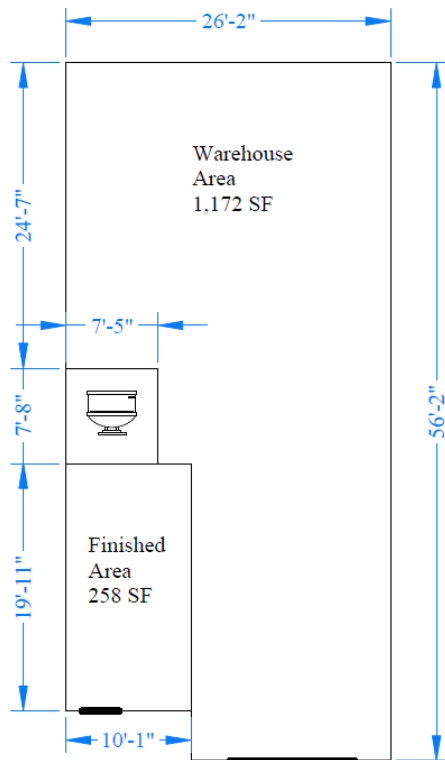
Suite #9

Ali Roesener, SIOR
(702) 765-8894
Ali.Roesener@lpc.com

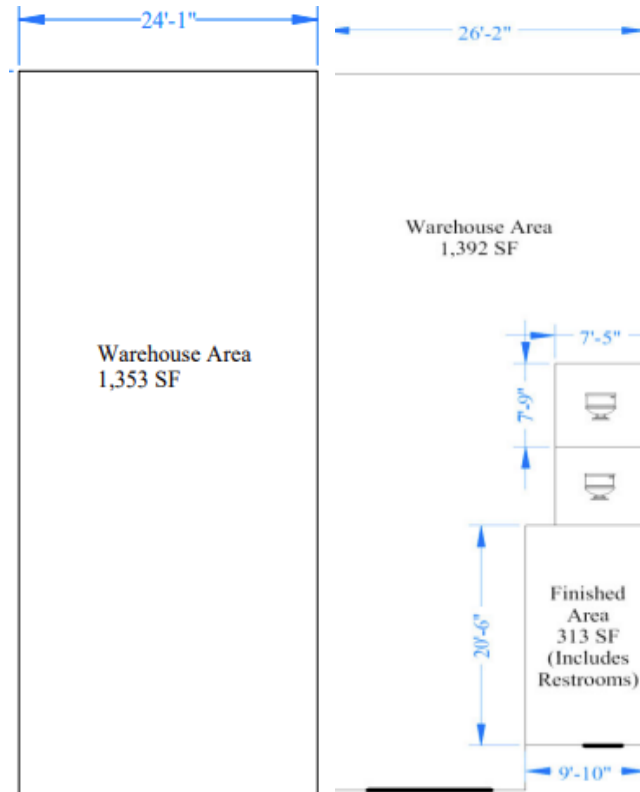
Tony Alvarez
(702) 765-8880
Tony.Alvarez@lpc.com

Lincoln

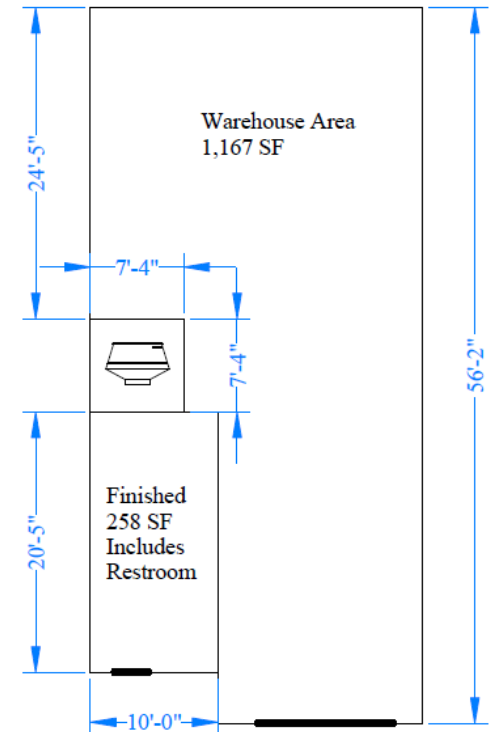
Building D Available Floorplans



Suite #14



Suite #15, 16



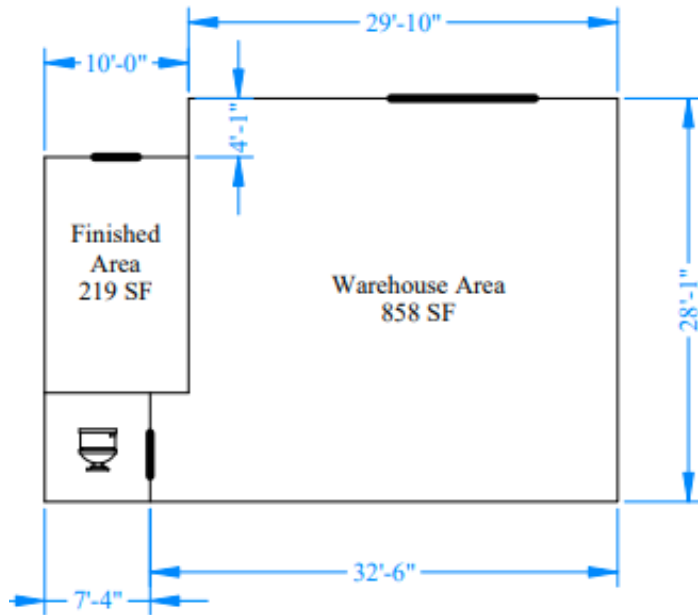
Suite #17

Ali Roesener, SIOR
(702) 765-8894
Ali.Roesener@lpc.com

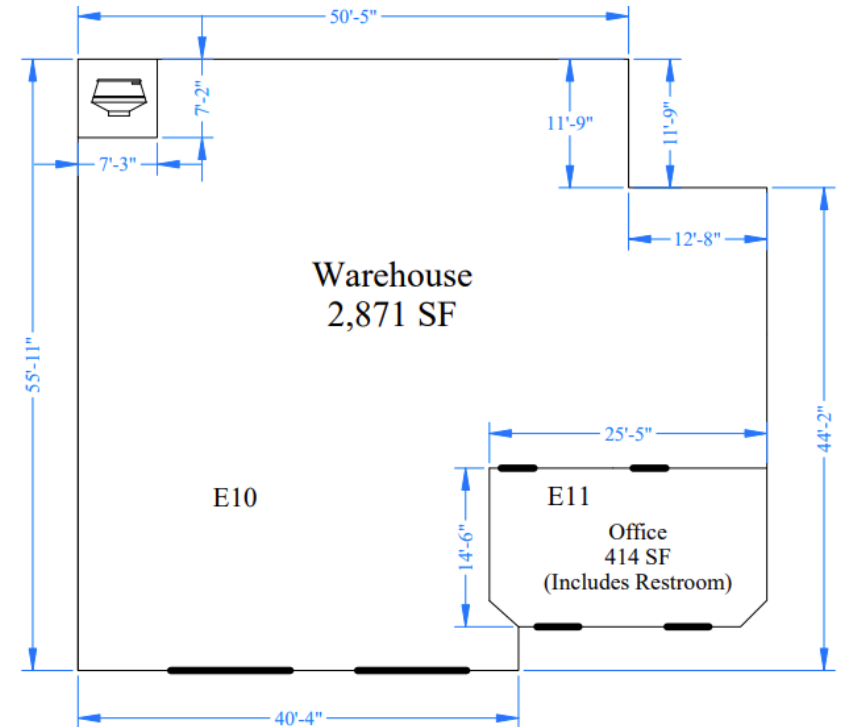
Tony Alvarez
(702) 765-8880
Tony.Alvarez@lpc.com

Lincoln

Building E Available Floorplans



Suite #14



Suite #10, 11

Ali Roesener, SIOR
(702) 765-8894
Ali.Roesener@lpc.com

Tony Alvarez
(702) 765-8880
Tony.Alvarez@lpc.com

Lincoln