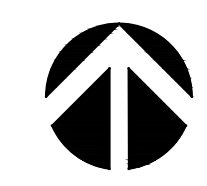
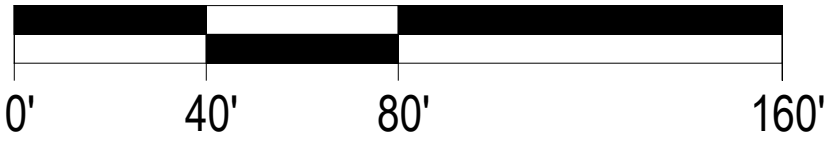


Driveable grass - Emergency egress lane

**TOTAL GROSS AREA: 143,845 SF**

ANTARES SENIOR LIVING				ANTARES OF ORMOND BEACH LLC				21378
UNIT TABULATION - 4/1 STORY								5/31/22
UNIT NAME	UNIT TYPE	NET AREA(SF)	UNIT COUNT	BED COUNT	PERCENTAGE	TOTAL AREA	% BREAKDOWN	
MC S1	1br/1ba	353	20	20	14%	7,060		
MC S2	2br/2ba	646	4	8	3%	2,584	17%	
AL S1	1br/1ba	365	27	27	19%	9,855		
AL A1	1br/1ba	535	38	38	27%	20,330	55%	
AL B1	2br/2ba	955	12	24	9%	11,460		
AL LITE A1	1br/1ba	708	20	20	14%	14,160		
AL LITE A2	1br/1ba	745	8	8	6%	5,960	28%	
AL LITE B2	2br/2ba	1,057	11	22	8%	11,627		
<b>TOTALS</b>			<b>140</b>	<b>167</b>	<b>100%</b>	<b>83,036</b>	<b>100%</b>	
<b>UNIT AVERAGE NET SF :</b>				<b>593</b>				
* NET AREA IS COMPUTED TO INCLUDE SQUARE FOOTAGE FROM EXTERIOR FACE OF ALL EXTERIOR FRAME WALLS THAT ENCLOSE A/C SPACE. IT DOES NOT INCLUDE PATIOS, BALCONIES, PATIO/BALCONY STORAGE.								
<b>PROJECT DATA</b>				<b>UNIT AVERAGE NET SF :</b>				
			<b>593</b>	<b>S.F.</b>				
<b>PARKING:</b>								
SURFACE PARKING			<b>76</b>	<b>SPACES</b>				
TOTAL SPACES			<b>0.54</b>	<b>SPACES/UNITS</b>				
			<b>0.46</b>	<b>SPACES/BEDS</b>				

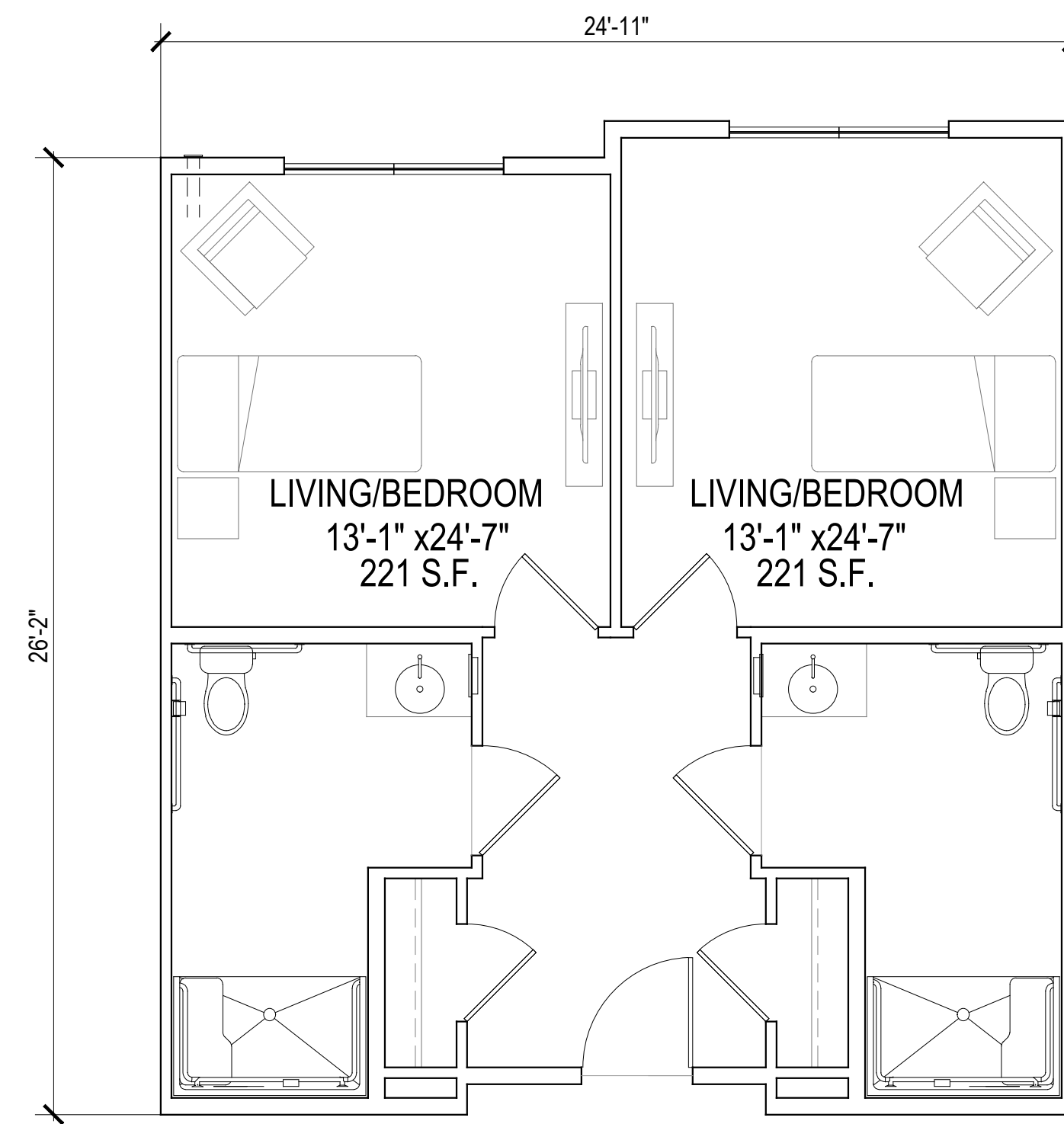
SCALE: 1" = 40' - 0" (24"x36" SHEET)



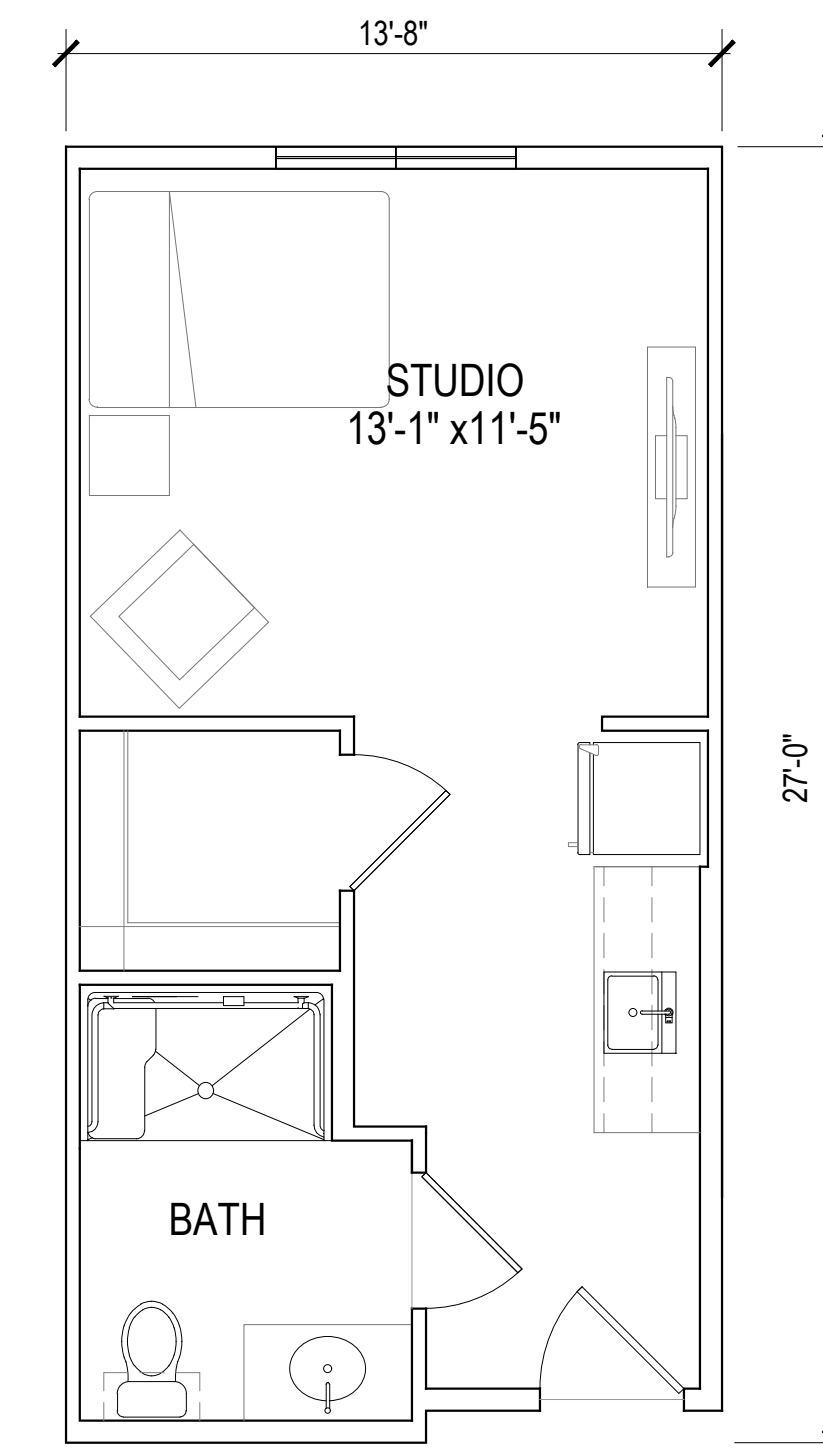
© 2019 by HUMPHREYS & PARTNERS ARCHITECTS, L.P. The arrangements depicted herein are the sole property of Humphreys & Partners Architects, L.P. and may not be reproduced in any form without its written permission. Architectural conceptual site plans are for feasibility purpose only. Revisions may occur due to further investigation from regulatory authorities and building code analysis. Dimensions shown are of a strategic intent only. Refer to surveys and civil drawings for technical information and measurements.



UNIT-MC- S1  
NET - 353 SQ. FT.  
20 UNITS

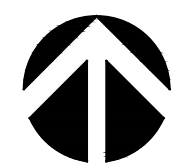


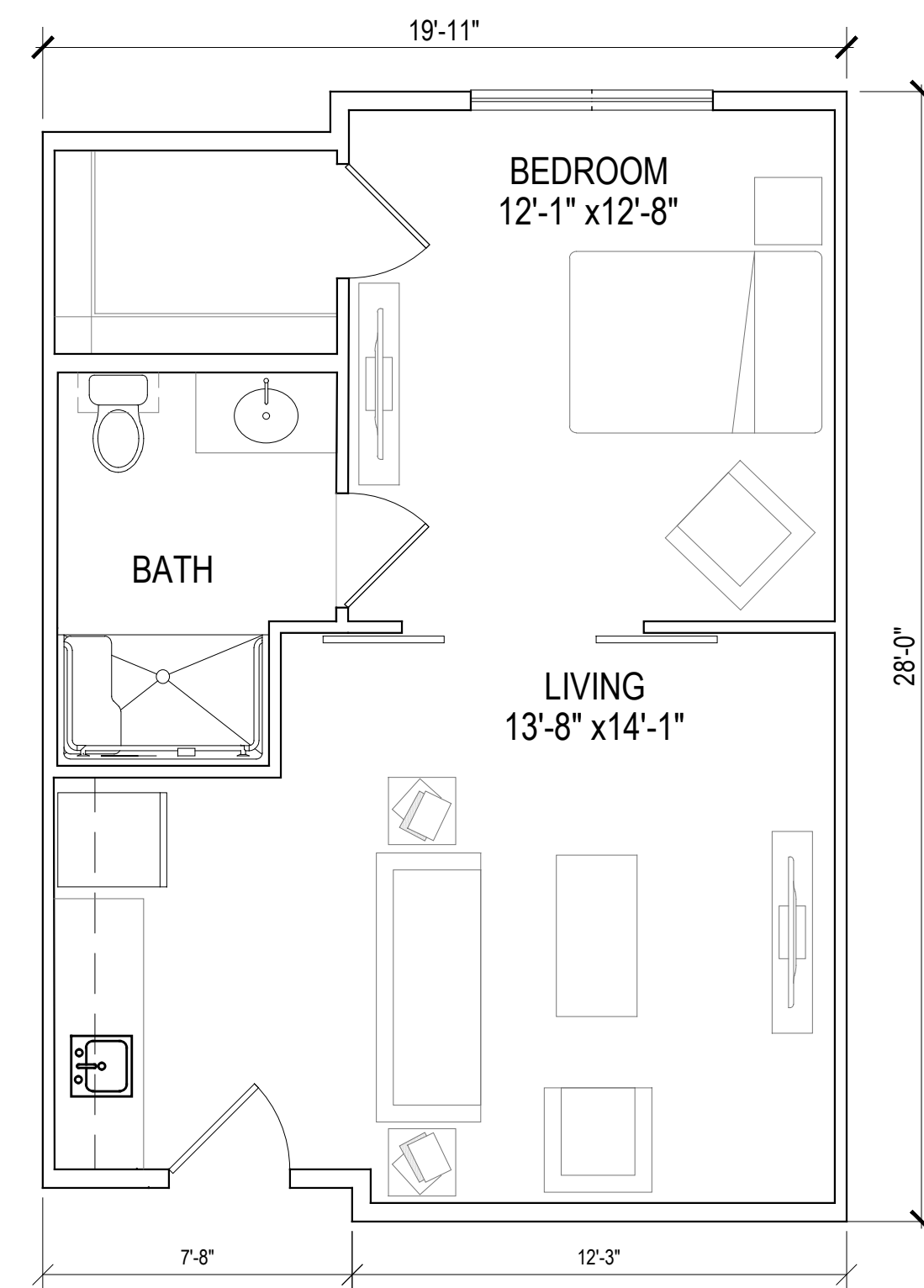
UNIT-MC- S2  
NET - 659 SQ. FT.  
4 UNITS



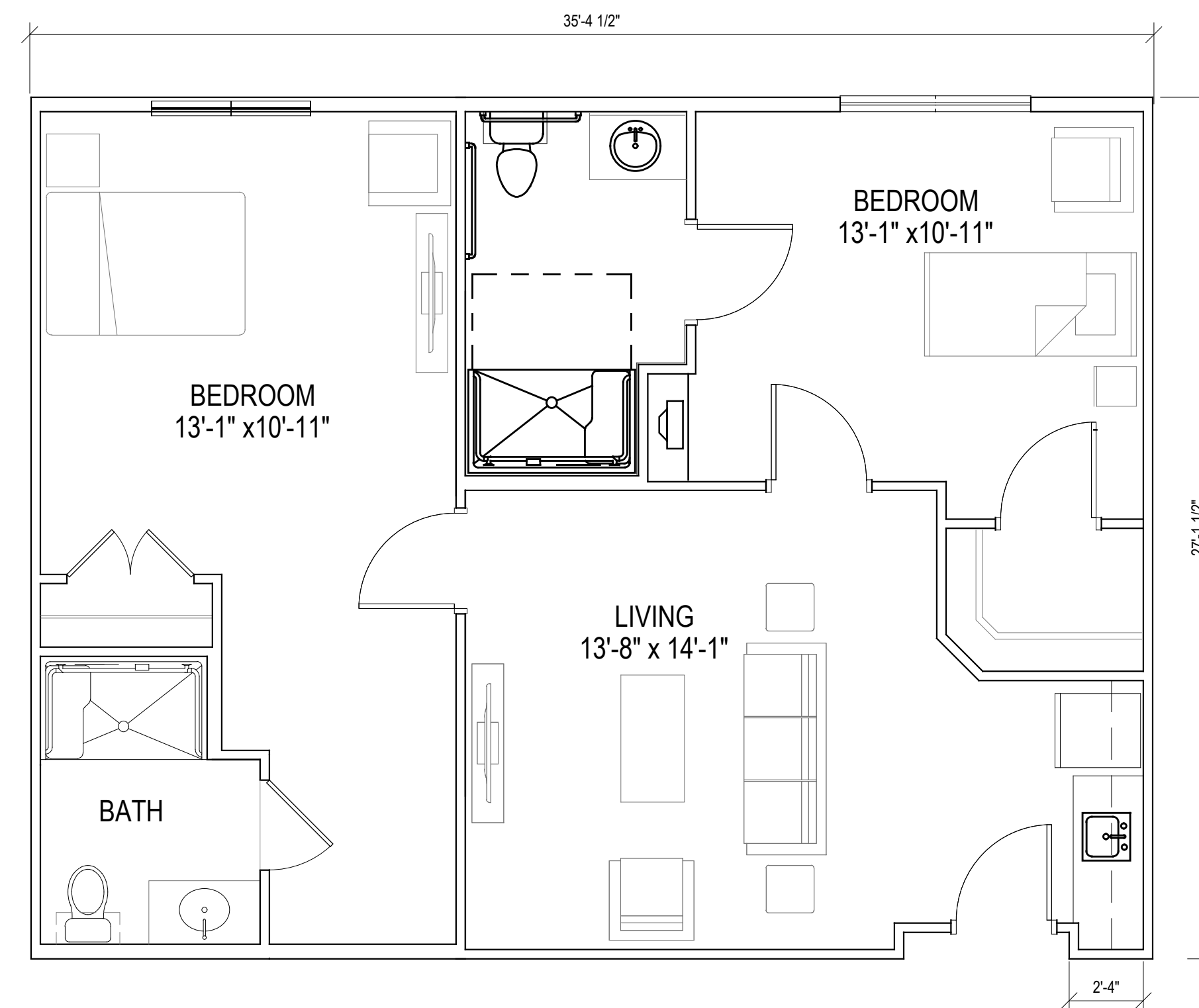
UNIT - AL-S1  
NET - 365 SQ. FT.  
27 UNITS

SCALE: 1/4" = 1'-0" (24"x36" SHEET)

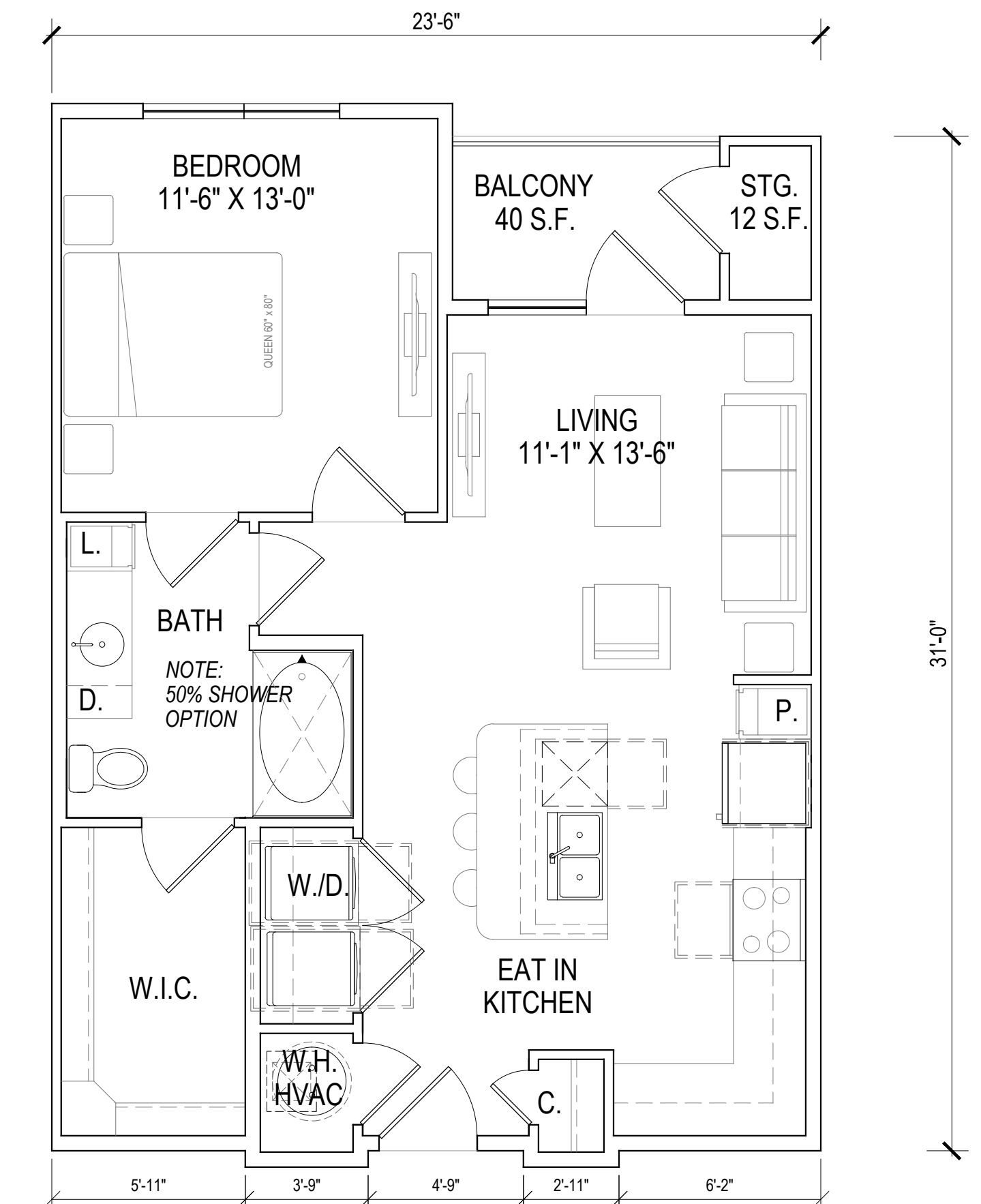




**UNIT - AL-A1**  
 NET - 544 SQ. FT.  
 38 UNITS

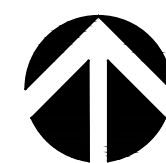


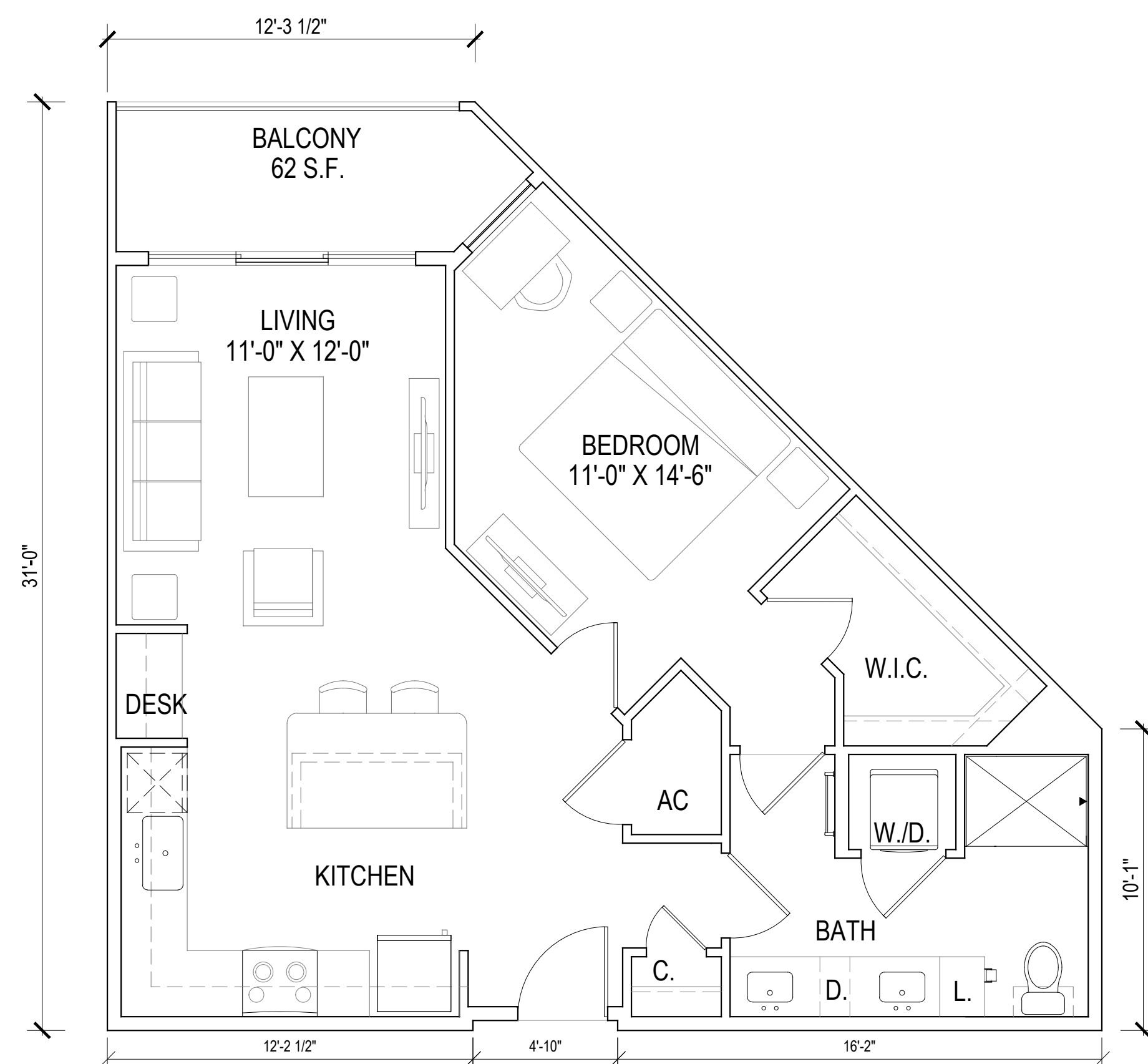
**AL--B1**  
 955 N.S.F.  
 12 UNITS



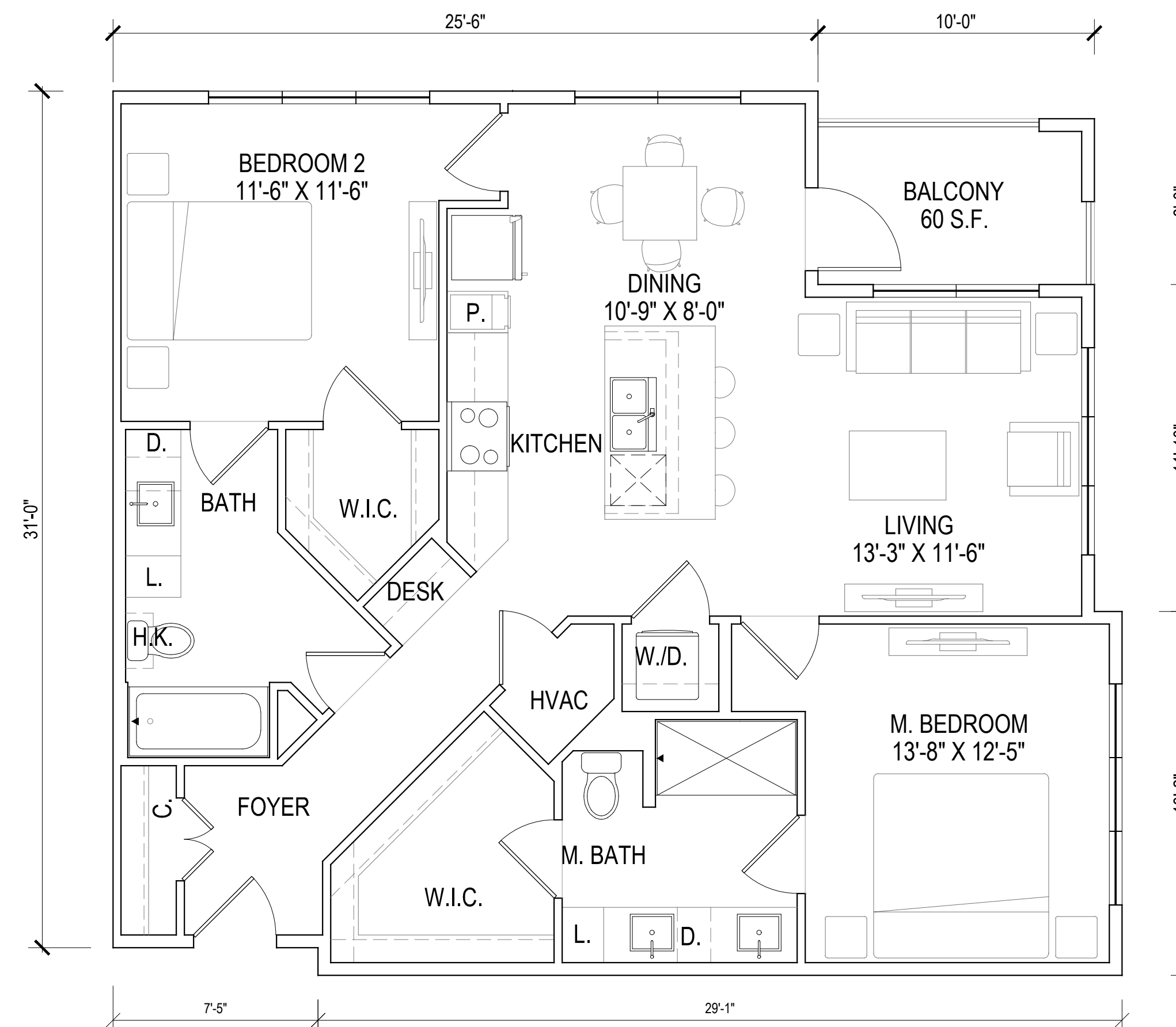
**UNIT AL LITE A1**  
 NET - 703 S.F.  
 (INCLUDES 12 S.F. STORAGE)  
 20 UNITS

SCALE: 1/4" = 1'-0" (24"x36" SHEET)



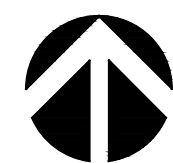


**UNIT AL LITE A2**  
**NET - 745 SQ. FT.**  
**Nº OF UNITS: xx**  
**8 UNITS**

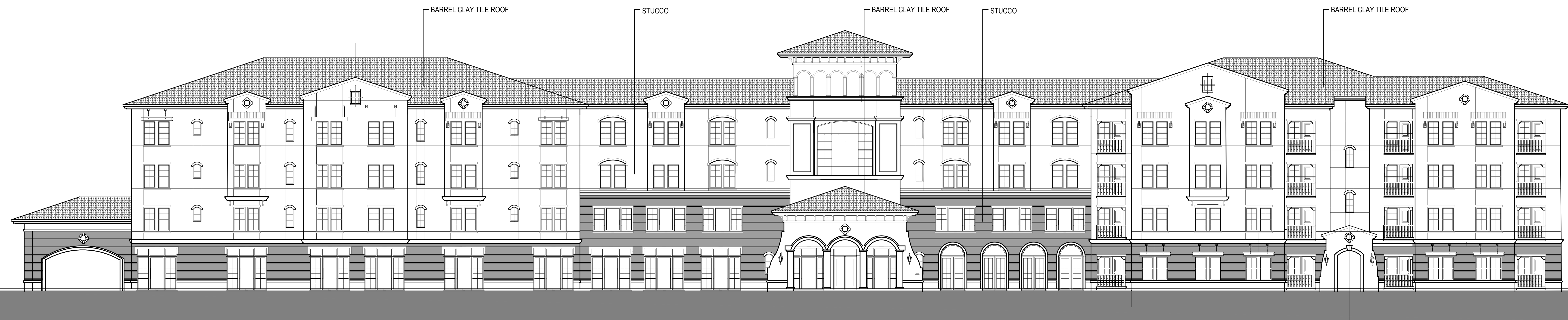


**UNIT AL LITE B2**  
**NET - 1072 SQ. FT.**  
**Nº OF UNITS: xx**  
**11 UNITS**

SCALE: 1/4" = 1'-0" (24"x36" SHEET)



A-303



NORTH ELEVATION

A-400