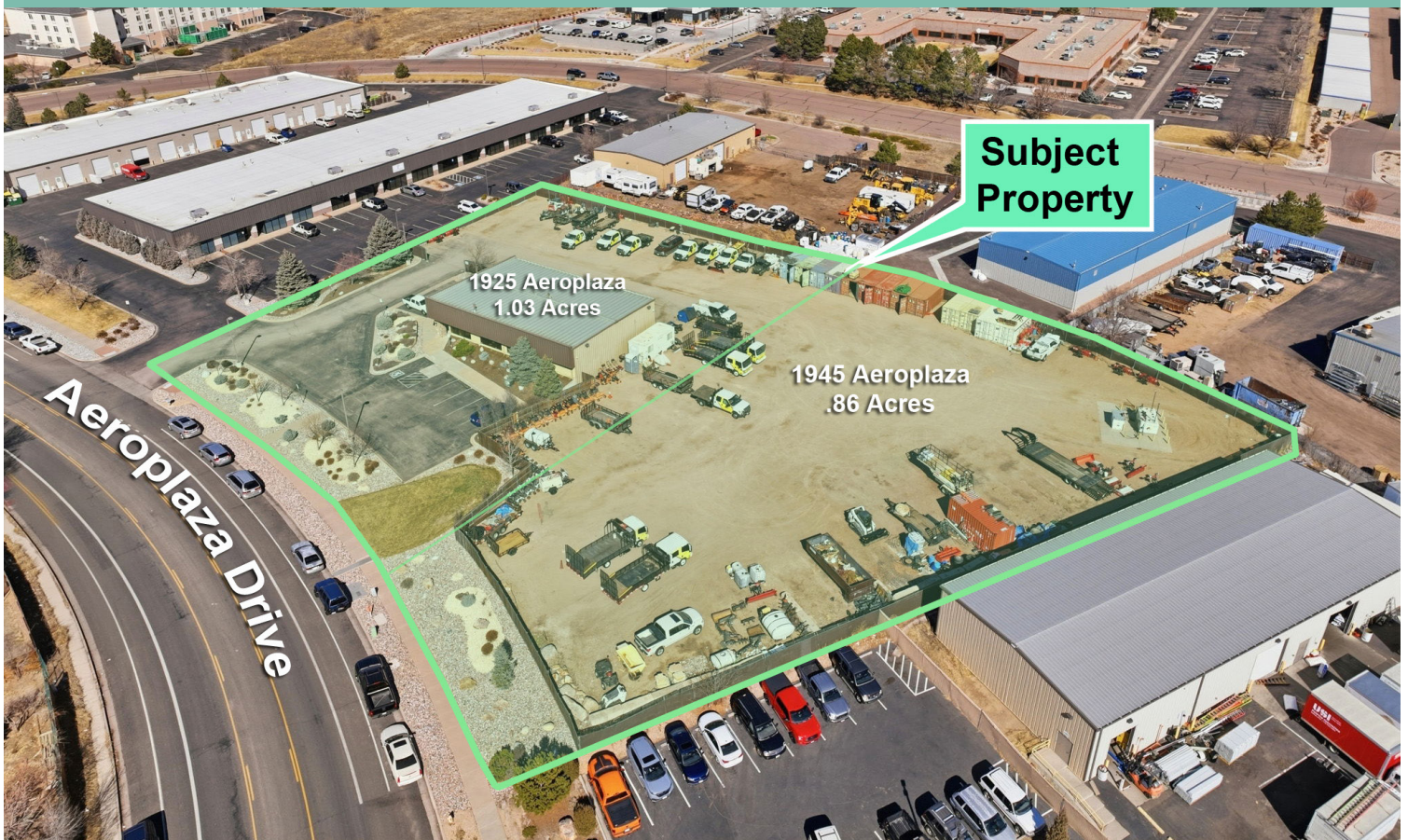


1925 & 1945 Aeroplaza

Colorado Springs, CO 80916
www.cbre.com/colorado

Fully Fenced Industrial Lots and a Class A Office/ Warehouse building



Property Details

+ Building: 3,674 SF Office/ Warehouse

+ Lease Rates:

- Entire Property: \$8,500 to \$12,000 per month + NNN
- 1925 Aeroplaza: \$6,500 per month + NNN
- 1945 Aeroplaza: \$3,500 per month + NNN

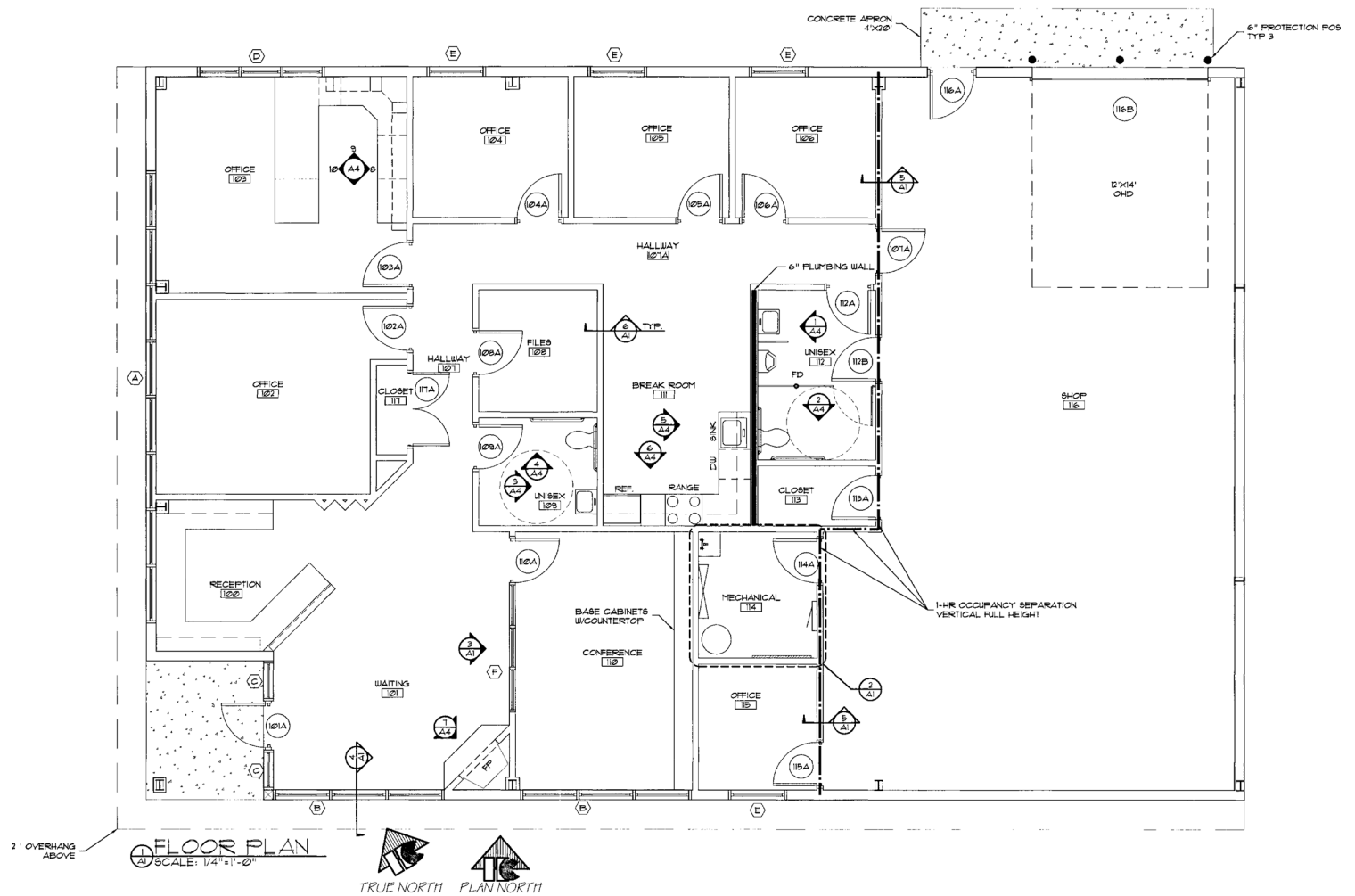
+ Lot Size: 1.03 & .86 acres (1.89 total acres)

+ Zoning: BP/ CR AO

Property Highlights

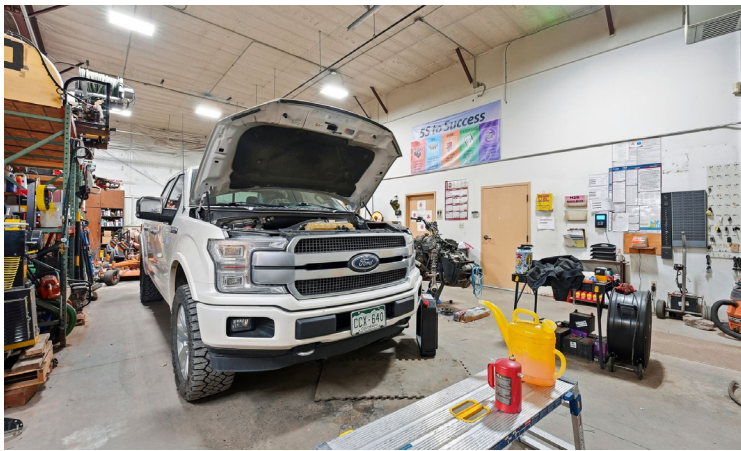
- + Extremely clean and fully fenced lot (1.89 Acres total)
- + Professional/ Class A type finishes throughout office.
- + 14' overhead door within warehouse.
- + Fantastic location just off Powers and E Fountain Blvd
- + Option to take all of the land or either 1.03 acres with the building or .86 acres of fenced land.
- + Ideal property for Construction/ Contractors, Home/ Property Service Businesses, Landscaping/ Exterior property services, specialty trade & niche services, and many more

Floor Plan



1925 & 1945 Aeroplaza Drive
Colorado Springs, CO 80916

For Lease



Map



Contact Us

Taylor Stamp

Vice President

+1 719 471 6068

Taylor.Stamp@cbre.com

© 2026 CBRE, Inc. All rights reserved. This information has been obtained from sources believed reliable, but has not been verified for accuracy or completeness. You should conduct a careful, independent investigation of the property and verify all information. Any reliance on this information is solely at your own risk. CBRE and the CBRE logo are service marks of CBRE, Inc. All other marks displayed on this document are the property of their respective owners, and the use of such logos does not imply any affiliation with or endorsement of CBRE. Photos herein are the property of their respective owners. Use of these images without the express written consent of the owner is prohibited.