

MAMMOTH LOFTS

N63 W23675 Main St, Sussex, WI 53089



FOR LEASE | +/- 18,816 SF NEW RETAIL PROPERTY AVAILABLE



OFFERING SUMMARY

Building Size:	+/- 18,816 SF
Available SF:	+/- 12,560 SF
Year Built:	2020
Number of Parking Spaces:	+/- 123
Lot Size:	+/- 1.61 Acres
Tax / APN #:	SUXV0246988001
Lease Rate:	\$16.00-18.00 (NNN)
Estimated CAM:	\$5.00 SF

PATRICK MCGLINN

Senior Vice President
414.858.5218
pmcglinn@acgwi.com

PROPERTY HIGHLIGHTS

- New mixed-use retail development with 40 unit luxury apartments
- Retail suites have optional access to front sidewalk and parking lot
- Tall ceilings and large windows
- High visibility location
- +/- 13,900 cars/day per WI DOT

DEMOGRAPHICS

	0.5 MILES	1 MILE	1.5 MILES
Total Households	497	1,955	3,862
Total Population	1,207	4,360	8,895
Average HH Income	\$124,690	\$104,922	\$113,233

MAMMOTH LOFTS

N63 W23675 Main St, Sussex, WI 53089

Anderson
Commercial Group

ADDITIONAL PHOTOS | +/- 18,816 SF NEW RETAIL PROPERTY FOR LEASE



PATRICK MCGLINN

Senior Vice President

414.858.5218

pmcglinn@acgwi.com

Anderson Commercial Group

5000 S Towne Dr, Suite 100, New Berlin, WI 53151

414.425.2700

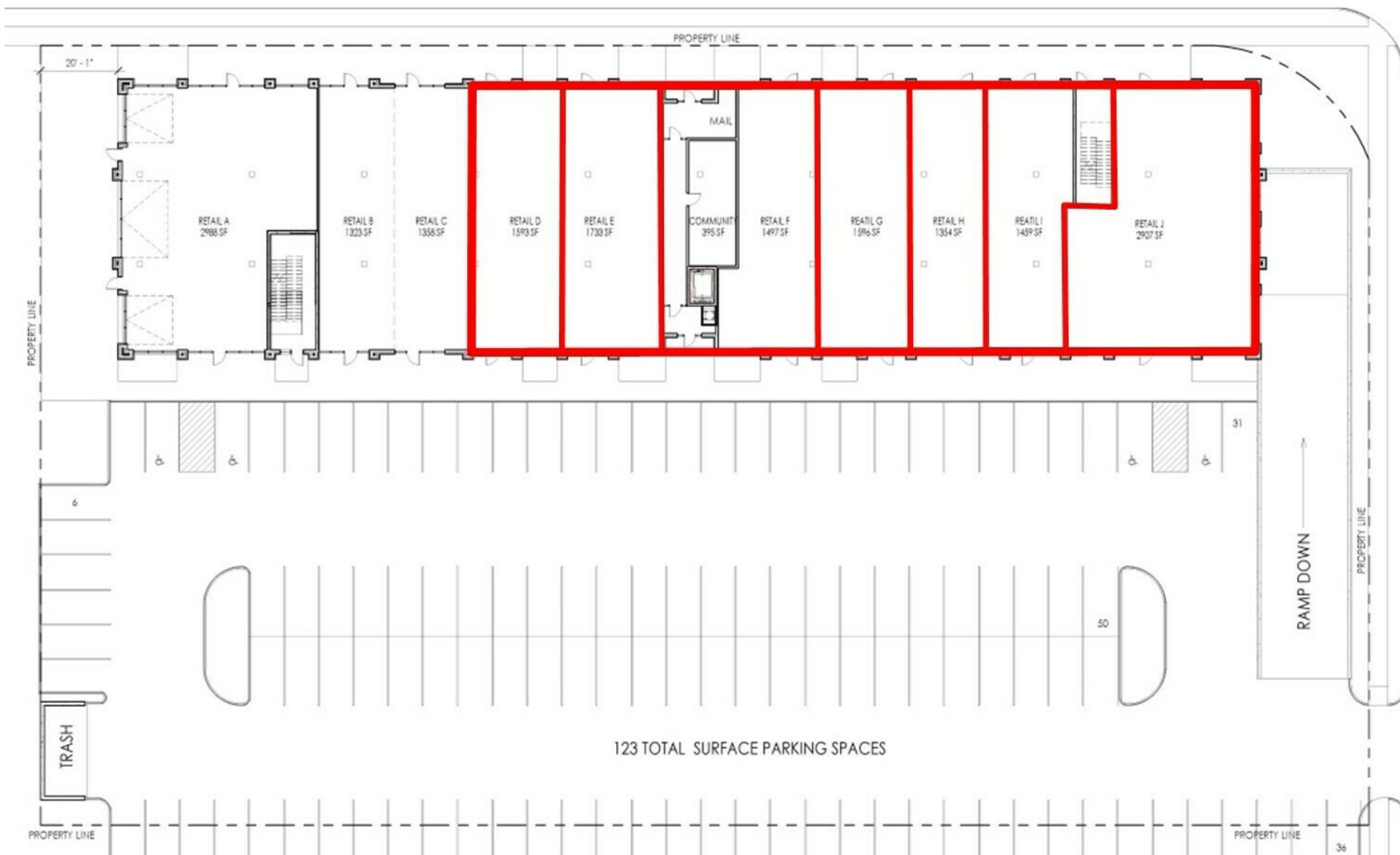
andersoncommercialgroup.com

Information shown herein was provided by the Seller/Lessor and/or other third parties and has not been verified by the broker unless otherwise indicated. All references to acreage or square feet of the property or premises are approximate and must be verified by purchaser or tenant for accuracy.

MAMMOTH LOFTS

N63 W23675 Main St, Sussex, WI 53089

AVAILABLE SUITES | +/- 18,816 SF NEW RETAIL PROPERTY FOR LEASE



PATRICK MCGLINN
Senior Vice President
414.858.5218
pmcglinn@acgwi.com

MAMMOTH LOFTS

N63 W23675 Main St, Sussex, WI 53089

SITE PLANS | +/- 18,816 SF NEW RETAIL PROPERTY FOR LEASE



UNIT MATRIX 2ND & 3RD FLOOR

UNIT TYPE	SQUARE FOOTAGE	TOTAL
1 BEDROOM		
1A	759 SF	10
1B	748 SF	4
2 BEDROOM		
2A	1110 SF	8
2B	1031 SF	2
2C	1166 SF	2
2D	992 SF	2
3 BEDROOM		
3A	1196 SF	4
STUDIO		
S1	434 SF	2
S2	432 SF	6
TOTAL		
		40



215 N. WATER STREET, SUITE 250
MILWAUKEE, WISCONSIN 53202
T 414.277.9700 | F 414.277.9705
spsarchitects.com

PROJECT

MAMMOTH LOFTS

UNIT MATRIX 1ST FLOOR

(10) RETAIL TENANTS

UNIT MATRIX TOTAL

- (4) - 3 BEDROOMS
- (12) - 2 BEDROOMS
- (16) - 1 BEDROOMS
- (8) - STUDIOS
- 40 TOTAL UNITS
- (10) - RETAIL TENANTS

PARKING

- (51) COVERED PARKING SPACES
- (123) SURFACE PARKING SPACES

OWNER



REVISIONS

NO.	DESCRIPTION	DATE

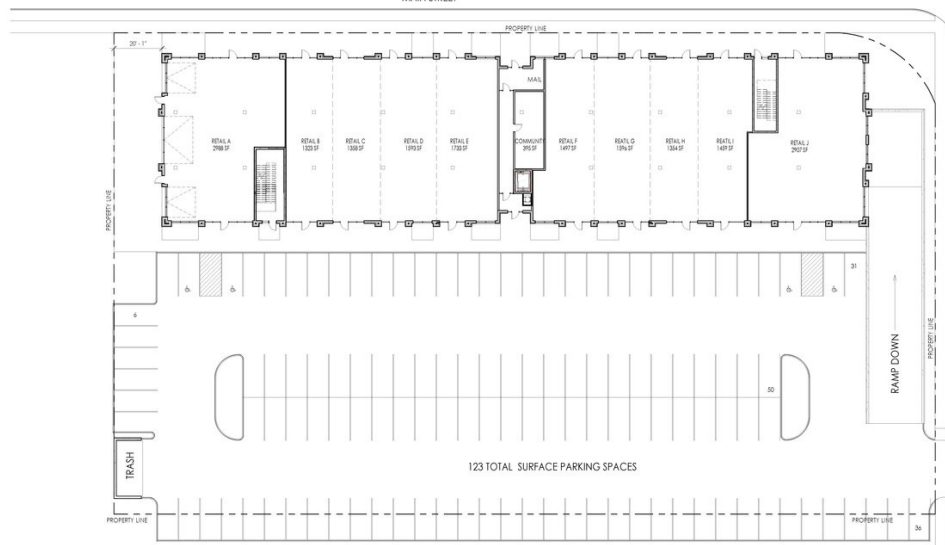
INFORMATION

PROJECT ARCHITECT	SPS
PROJECT MANAGER	MJU
PROJECT NUMBER	18-763
ISSUED FOR	OWNER REVIEW
DATE	06/28/19

SHEET

SITE PLAN

EX1



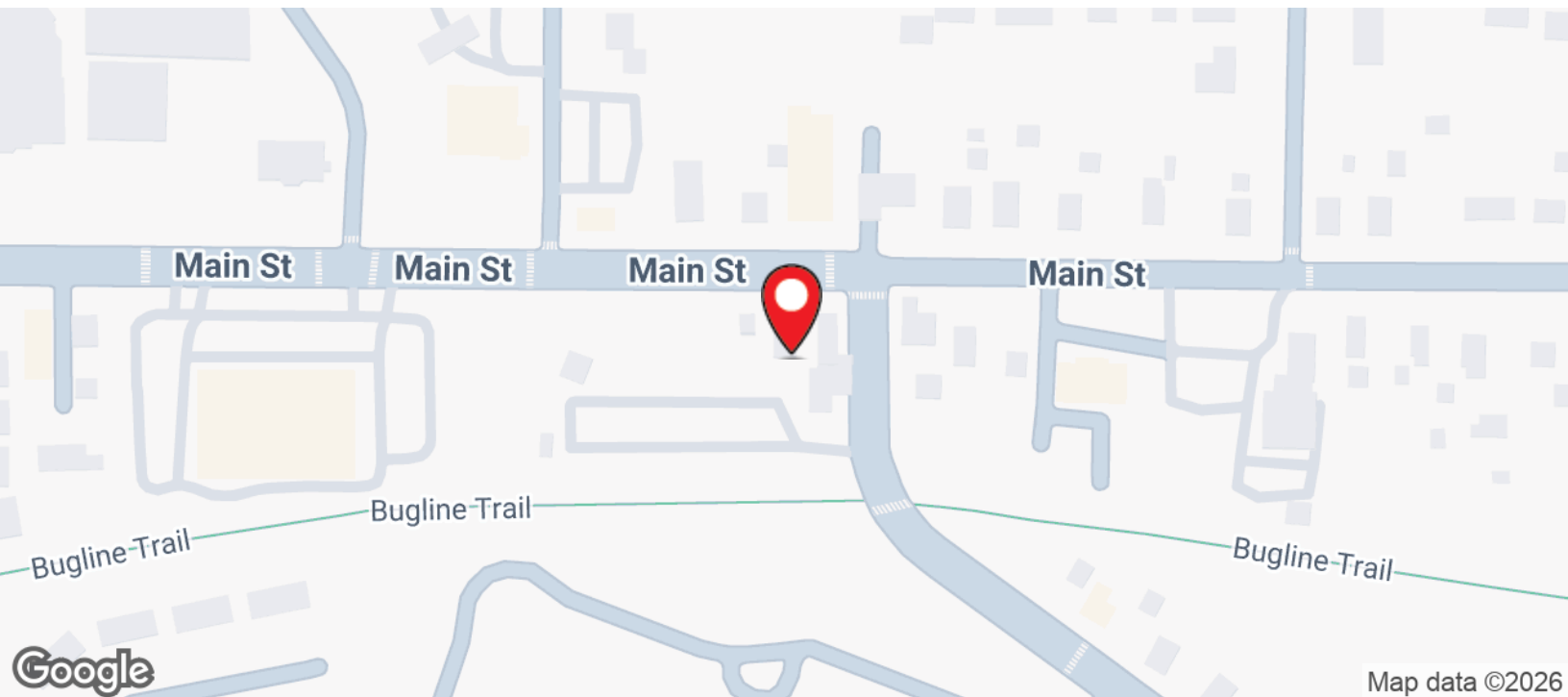
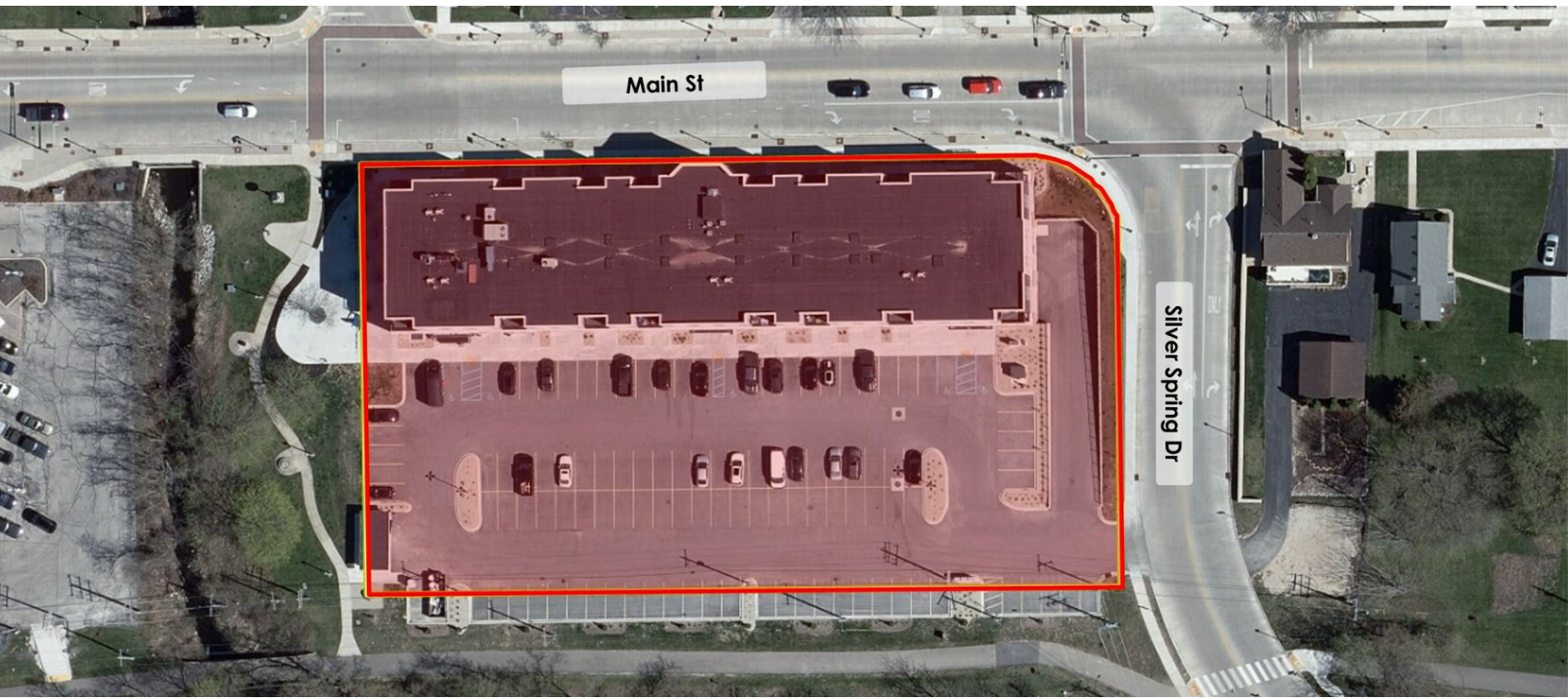
PATRICK MCGLINN
Senior Vice President
414.858.5218
pmcglinn@acgwi.com

MAMMOTH LOFTS

N63 W23675 Main St, Sussex, WI 53089

Anderson
Commercial Group

LOCATION MAP | +/- 18,816 SF NEW RETAIL PROPERTY FOR LEASE



PATRICK MCGLINN
Senior Vice President
414.858.5218
pmcglinn@acgwi.com

DISCLOSURE TO NON-RESIDENTIAL CUSTOMERS

1 Prior to negotiating on your behalf the brokerage firm, or an agent associated with the firm, must provide you the
2 following disclosure statement:

3 **DISCLOSURE TO CUSTOMERS** You are a customer of the brokerage firm (hereinafter Firm). The Firm is either an agent
4 of another party in the transaction or a subagent of another firm that is the agent of another party in the transaction. A
5 broker or a salesperson acting on behalf of the Firm may provide brokerage services to you. Whenever the Firm is
6 providing brokerage services to you, the Firm and its brokers and salespersons (hereinafter Agents) owe you, the
7 customer, the following duties:

- 8 (a) The duty to provide brokerage services to you fairly and honestly.
 - 9 (b) The duty to exercise reasonable skill and care in providing brokerage services to you.
 - 10 (c) The duty to provide you with accurate information about market conditions within a reasonable time if you request
11 it, unless disclosure of the information is prohibited by law.
 - 12 (d) The duty to disclose to you in writing certain Material Adverse Facts about a property, unless disclosure of the
13 information is prohibited by law (see lines 42-51).
 - 14 (e) The duty to protect your confidentiality. Unless the law requires it, the Firm and its Agents will not disclose your
15 confidential information or the confidential information of other parties (see lines 23-41).
 - 16 (f) The duty to safeguard trust funds and other property held by the Firm or its Agents.
 - 17 (g) The duty, when negotiating, to present contract proposals in an objective and unbiased manner and disclose the
18 advantages and disadvantages of the proposals.
- 19 Please review this information carefully. An Agent of the Firm can answer your questions about brokerage services,
20 but if you need legal advice, tax advice, or a professional home inspection, contact an attorney, tax advisor, or home
21 inspector. This disclosure is required by section 452.135 of the Wisconsin statutes and is for information only. It is a
22 plain-language summary of the duties owed to a customer under section 452.133(1) of the Wisconsin statutes.

23 **CONFIDENTIALITY NOTICE TO CUSTOMERS** The Firm and its Agents will keep confidential any information given to the
24 Firm or its Agents in confidence, or any information obtained by the Firm and its Agents that a reasonable person
25 would want to be kept confidential, unless the information must be disclosed by law or you authorize the Firm to
26 disclose particular information. The Firm and its Agents shall continue to keep the information confidential after the
27 Firm is no longer providing brokerage services to you.

- 28 The following information is required to be disclosed by law:
- 29 1. Material Adverse Facts, as defined in Wis. Stat. § 452.01(5g) (see lines 42-51).
 - 30 2. Any facts known by the Firm or its Agents that contradict any information included in a written inspection
31 report on the property or real estate that is the subject of the transaction.

32 To ensure that the Firm and its Agents are aware of what specific information you consider confidential, you may
33 list that information below (see lines 35-41) or provide that information to the Firm or its Agents by other means. At a
34 later time, you may also provide the Firm or its Agents with other Information you consider to be confidential.

35 **CONFIDENTIAL INFORMATION:** _____
36 _____
37 _____

38 **NON-CONFIDENTIAL INFORMATION** (the following information may be disclosed by the Firm and its Agents): _____
39 _____
40 _____
41 _____ (Insert information you authorize to be disclosed, such as financial qualification information.)

42 **DEFINITION OF MATERIAL ADVERSE FACTS**
43 A "Material Adverse Fact" is defined in Wis. Stat. § 452.01(5g) as an Adverse Fact that a party indicates is of such
44 significance, or that is generally recognized by a competent licensee as being of such significance to a reasonable
45 party, that it affects or would affect the party's decision to enter into a contract or agreement concerning a transaction
46 or affects or would affect the party's decision about the terms of such a contract or agreement.

47 An "Adverse Fact" is defined in Wis. Stat. § 452.01(1e) as a condition or occurrence that a competent licensee
48 generally recognizes will significantly and adversely affect the value of the property, significantly reduce the structural
49 integrity of improvements to real estate, or present a significant health risk to occupants of the property; or information
50 that indicates that a party to a transaction is not able to or does not intend to meet his or her obligations under a
51 contract or agreement made concerning the transaction.

52 **NOTICE ABOUT SEX OFFENDER REGISTRY** You may obtain information about the sex offender registry and persons
53 registered with the registry by contacting the Wisconsin Department of Corrections on the Internet at
54 <http://www.doc.wi.gov> or by telephone at 608-240-5830.