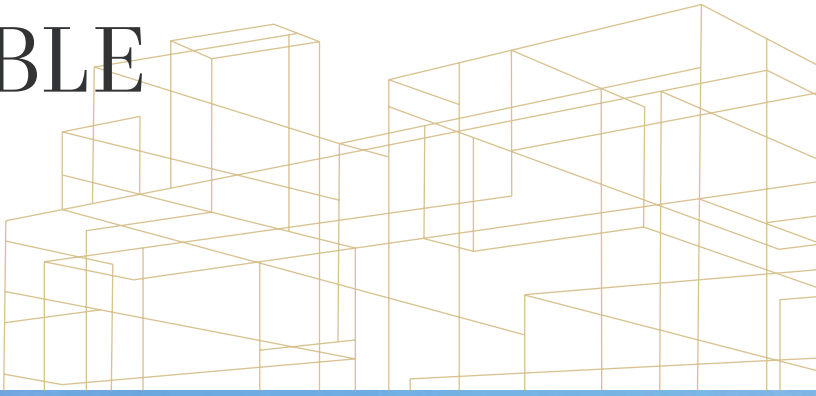


±1,310 SF AVAILABLE FOR SUB-LEASE

3548 SEAGATE WAY, OCEANSIDE, CA



SEAGATE CORPORATE CENTER

Professional Class A office suite with dramatic views

Three window line private offices, conference room, coffee bar with sink, dedicated IT storage closet

24 hour access to common conference room

Prime location near shops, restaurants and hotels with easy access to Hwy 76, Hwy 78 & I-5

30 MILES to San Clemente & 39 miles to San Diego

Corporate Neighbors include Gilead, Genetech, Coca-Cola, Titleist, Suja Juice, and FedEx

Sublease Expires February 29, 2028, Longer Term Available

FOR MORE
INFORMATION
CONTACT

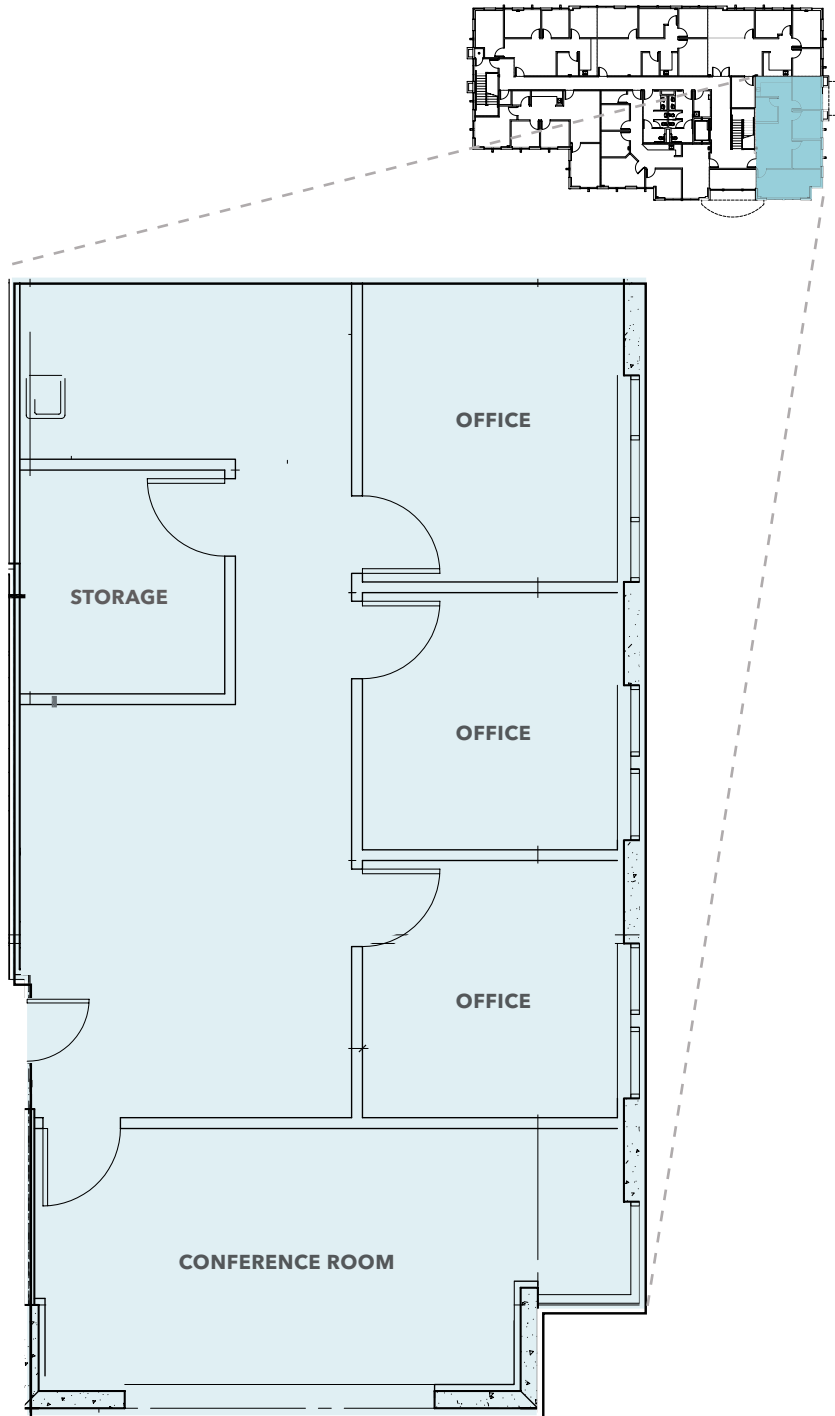
RON KING, SIO
858.369.3011
ron.king@kidder.com
LIC N° 00868661

BOB WILLINGHAM, SIO
858.369.3013
bob.willingham@kidder.com
LIC N° 01469841

KIDDER.COM

This information supplied herein is from sources we deem reliable. It is provided without any representation, warranty, or guarantee, expressed or implied as to its accuracy. Prospective Buyer or Tenant should conduct an independent investigation and verification of all matters deemed to be material, including, but not limited to, statements of income and expenses. Consult your attorney, accountant, or other professional advisor.





SUITE 200

AVAILABLE

+1,310

SQUARE FEET

\$3,006

LEASE RATE / PER MONTH

\$2.30

PER SQUARE FOOT

NOW

AVAILABLE

FOR MORE INFORMATION CONTACT

RON KING 858.369.3011 | ron.king@kidder.com | LIC N° 00868661

BOB WILLINGHAM 858.369.3013 | bob.willingham@kidder.com | LIC N° 01469841

KIDDER.COM

This information supplied herein is from sources we deem reliable. It is provided without any representation, warranty, or guarantee, expressed or implied as to its accuracy. Prospective Buyer or Tenant should conduct an independent investigation and verification of all matters deemed to be material, including, but not limited to, statements of income and expenses. Consult your attorney, accountant, or other professional advisor.

SEAGATE CORPORATE CENTER



17 MIN

TO OCEANSIDE
PIER / BEACHES

20 MIN

TO MCCLELLAN
PALOMAR AIRPORT IN
CARLSBAD

30 MIN

TO SAN CLEMENTE IN
ORANGE COUNTY

45 MIN

TO SAN DIEGO INTL
AIRPORT/DOWNTOWN
SAN DIEGO

KIDDER.COM

This information supplied herein is from sources we deem reliable. It is provided without any representation, warranty, or guarantee, expressed or implied as to its accuracy. Prospective Buyer or Tenant should conduct an independent investigation and verification of all matters deemed to be material, including, but not limited to, statements of income and expenses. Consult your attorney, accountant, or other professional advisor.

