

FOR SUBLEASE



# Trophy Office Space for Sublease in South End

2151 Hawkins Street, Suite 1025

## SPACE PROFILE

12,082 SF

Total SF

Immediate

Availability

Negotiable

Rental rate

30 unreserved

Parking spaces

12/31/30

Term

Available

Furniture

Cristy Nine  
Corporate Managing Director  
cnine@savills.us  
+1 704 506 2301

savills

**8th Floor Sky Lobby**



RAIL TRAIL



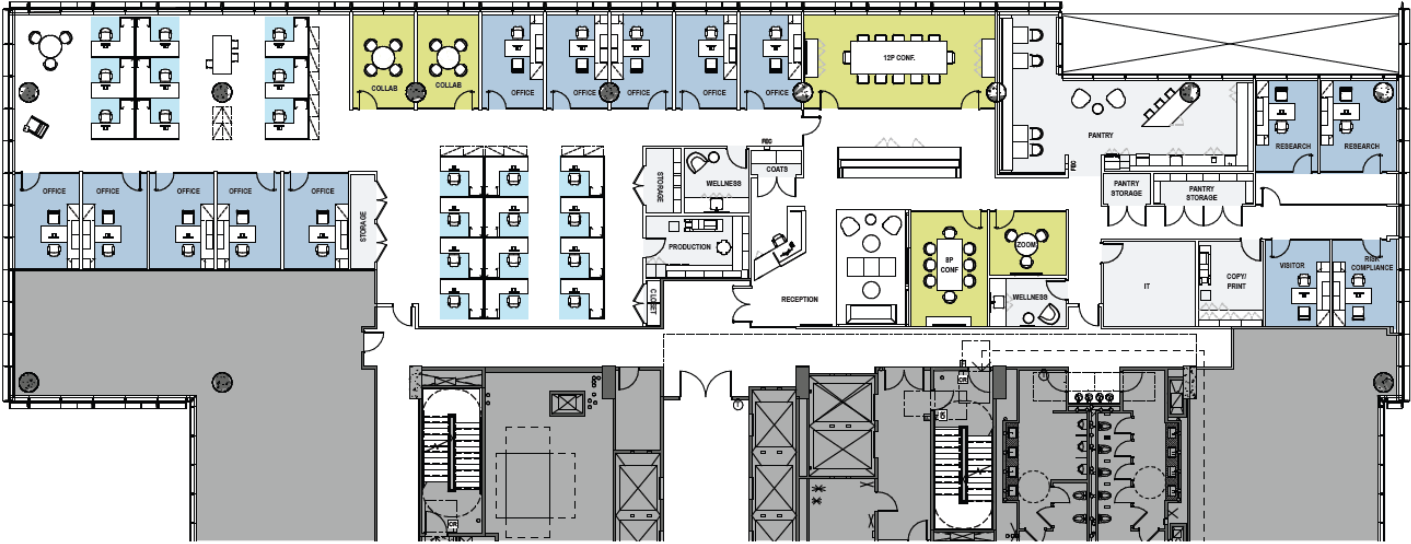
HAWKINS STREET

**BUILDING DETAILS:**

- 316,000 sf mixed use development
- Located in highly sought-after South End submarket
- On-site parking (2.5/1,000)
- 8th floor sky lobby with views of Uptown and South End
- Steps away from light rail and rail trail
- Amenities include rooftop terrace, bike storage, EV chargers
- Ground floor retail boasts Sycamore Brewing, Chapter 6, Gritbox Fitness
- LEED Certified and 3-star Fitwel Healthy Building Design Certified

10<sup>TH</sup> FLOOR

12,082 SF Available



**SPACE DETAILS:**

- Reception area
- Fully enclosed kitchen space
- 14 private offices
- 21 bullpen workstations
- 2 conference rooms
- 3 collaboration rooms
- 2 wellness rooms
- 2 work rooms
- IT/server room
- Multiple storage/coat closets
- Plug-and-play furniture

