

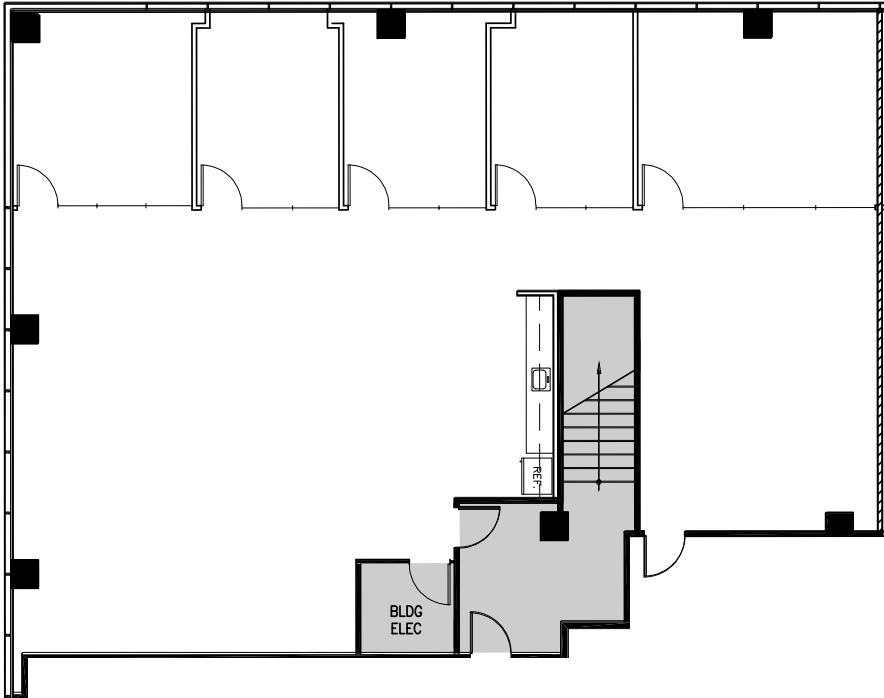
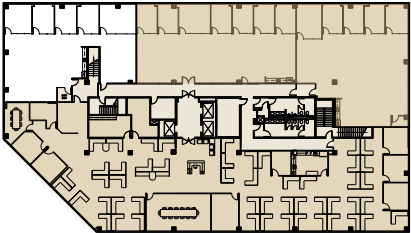
STADIUM CENTRE

2099 S STATE COLLEGE BLVD.

Suite 260 - 3,145 RSF

Spec Suite - Spec Suite - Available Now

 Click for Video Tour



JAY NUGENT
Executive Managing Director
CA RE Lic. #01248267
t 949-608-2035
jay.nugent@nmrk.com

ANDREW ROBBEN
Senior Managing Director
CA RE Lic. #01372891
t 949-608-2073
andrew.robber@nmrk.com

RICHARD SUNG
Senior Managing Director
CA RE Lic. #01953211
t 949-608-2178
richard.sung@nmrk.com

RAYLEE OVERTON
Transaction Manager
CA RE Lic. #02082860
t 949-608-2012
raylee.overton@nmrk.com

18401 Von Karman Avenue, Suite 150, Irvine, CA 92612 | Corporate License #01355491

The distributor of this communication is performing acts for which a real estate license is required. The information contained herein has been obtained from sources deemed reliable but has not been verified and no guarantee, warranty or representation, either express or implied, is made with respect to such information. Terms of sale or lease and availability are subject to change or withdrawal without notice.

