

# RETAIL FOR LEASE 1,450 SF - 14,430 SF



**JAMES TJOA  
& ASSOCIATES**  
ADVISORY - BROKERAGE - DEVELOPMENT  
RE/MAX COMMERCIAL



**FORMER WALGREENS BUILDING IN WHITE CENTER**

**9456 16TH AVENUE SW | SEATTLE, WA**

# THE OFFERING

The Offering: An expansive 14,430 SF building ready to be transformed to suit your business needs. Former home of Walgreens, this versatile retail space is zoned NC2-40 and can accommodate a number of business types and sizes.

Lease the entire building, or possible demising options range from 10,000 SF to 1,450 SF suites. Additionally, this property features possible parking ratios from 3/1,000 - 6/1,000, depending on use and/or additional yard space, a rare find in this neighborhood.

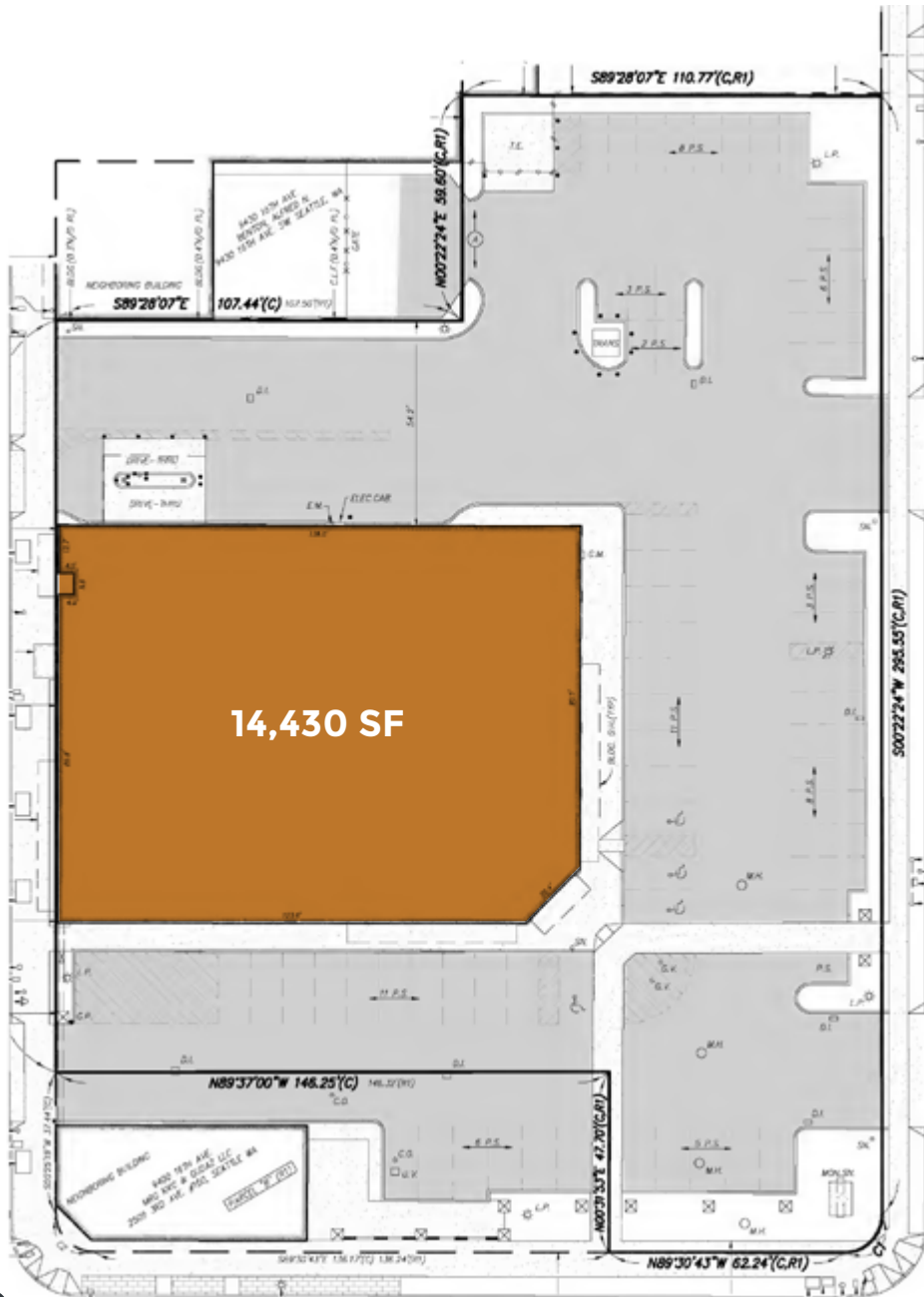
Positioned on a signalized hard corner, the site offers exceptional visibility and frontage along three roads. The three curb cuts provide convenient ingress and egress, and a pylon sign and drive-through lane offers the opportunity for three sided building signage to maximize exposure.

Join an eclectic mix of national brands and trendy local businesses in the dynamic and up-and-coming neighborhood of White Center. Often likened to what Capitol Hill was two decades ago, White Center boasts a vibrant commercial district and relatively affordable housing. The district is growing rapidly, making it the perfect time to establish your presence in this burgeoning area.

## PROPERTY OVERVIEW

LEASE RATE	<b>\$24-36 PSF NNN</b> <i>Based on Unit Size &amp; Delivery</i>
CAM ESTIMATE	<b>\$8-10 Per SF estimated</b>
ADDRESS	<b>9456 16th Avenue SW Seattle, WA 98106</b>
BUILDING SF	<b>14,430 SF</b>
DEMISING OPTIONS	<b>Available From 1,450 SF</b>
LOT SIZE	<b>Up to 1.22 AC / 53,348 Total SF Available</b>
CEILING HEIGHT	<b>Up to estimated 17 FT</b>
ZONING	<b>NC2-40</b> <i>Neighborhood Commercial 2</i>
PARKING RATIO	<b>3/1,000- 6/1,000</b> <i>Excellent Parking for the Area</i>
YEAR BUILT	<b>2002</b>
<b>Located on a Signalized Hard-Corner with Prime 3-Road Frontage Along Roxbury Street (19,221 VPD) and 16th Ave SW (4,907 VPD)</b>	
<b>Drive-Thru &amp; Pylon Signage</b>	
<b>\$157,961 Average Household Income (3-Mile)</b>	

# FLOOR PLAN & SITE



(A) Not to Scale

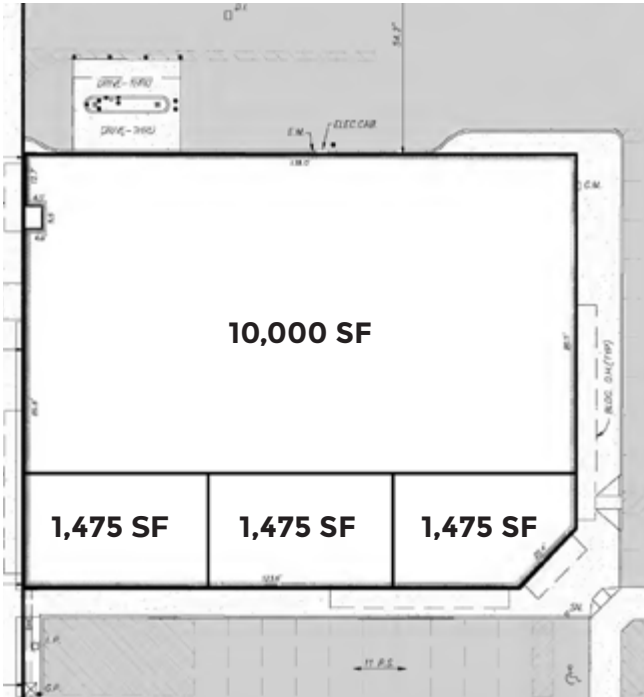
James Tjoa & Associates



(A)

# SAMPLE DEMISING OPTIONS

## OPTION ONE



## OPTION TWO



## OPTION THREE



Ⓐ

Potential Demising Options. Not to Scale. For Illustrative Purposes Only.

# LOCATION

WESTWOOD  
VILLAGE  
SHOPPING  
CENTER



TARGET



PET SUPPLIES PLUS



MCDONALD'S



MCDONALD'S



MCDONALD'S



GNC



MOD



Downtown  
Seattle  
±15-MINUTES

±19,221  
VPD (2025)

±4,907  
VPD (2024)

Domino's

T-Mobile

TAM  
SKYLIGHTS



# DEMOGRAPHICS

## POPULATION SUMMARY

	1-Mile	3-Miles	5-Miles
2023	22,883	111,506	274,121
2028	23,092	114,171	287,815

## MEDIAN HOUSEHOLD INCOME

	1-Mile	3-Miles	5-Miles
Median	\$143,109	\$116,367	\$132,426
Average	\$152,529	\$156,928	\$157,961



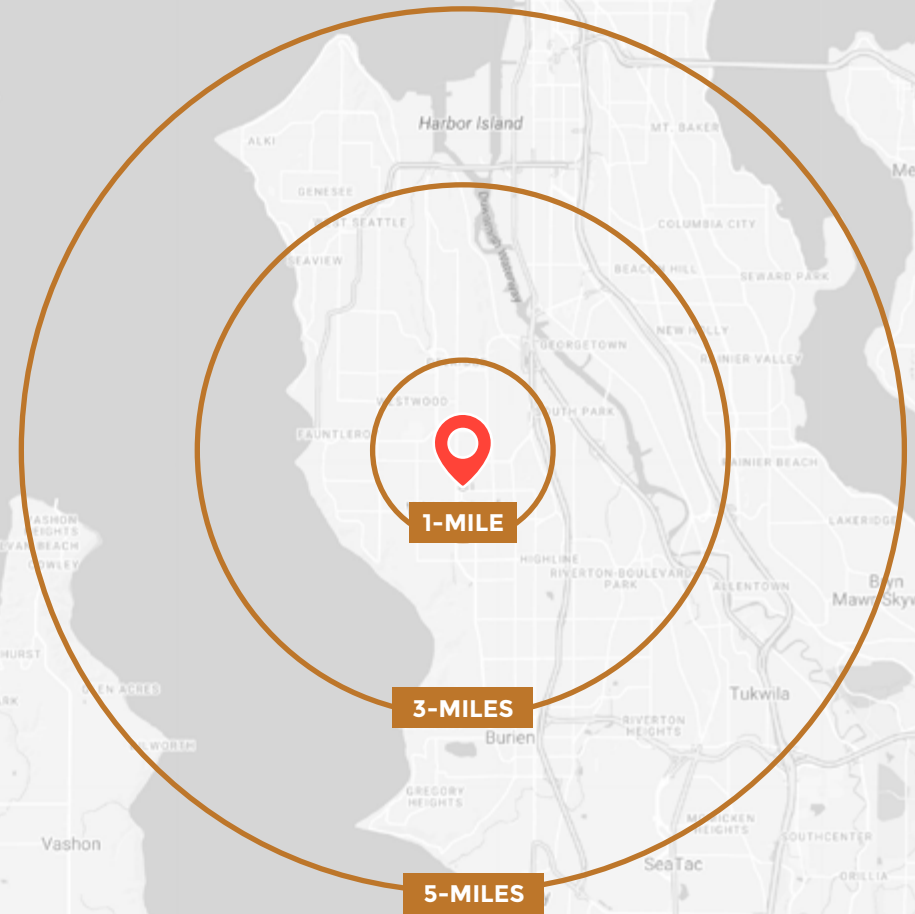
**39.7**  
MEDIAN  
AGE



**\$816K**  
MEDIAN  
HOME VALUE



**108,326**  
EMPLOYED  
POPULATION



EXCLUSIVELY LISTED BY



**JAMES TJOA**  
& ASSOCIATES  
ADVISORY - BROKERAGE - DEVELOPMENT  
RE/MAX COMMERCIAL

P 206.726.6230

F 206.322.7576

E james@jamestjoa.com

WWW.JAMESTJOA.COM

James Tjoa & Associates has been retained as the exclusive listing broker for 9456 16th Avenue SW in the city of Seattle, Washington. Legal documents and reports summarized in this Offering Memorandum are not intended to be comprehensive statements of the terms or contents of such documents and reports. While the Seller and James Tjoa & Associates believe the information to be accurate, potential buyers should conduct an independent investigation and reach conclusions without reliance on materials contained herein. The Seller reserves the right, for any or no reason, to withdraw the property from the market. The Seller has no obligation expressed or implied, to accept any offer. Further, the Seller has no obligation to sell the property unless and until the Seller executes and delivers a signed contract of sale on terms acceptable to the Seller, in its sole discretion. The material contained in this Offering Memorandum is confidential, under the terms and conditions of a Confidentiality Agreement, which has been executed by the recipient as Reviewer, and furnished solely for the purpose of considering the purchase of the property described herein and is not to be copied and/or used for any other purpose, or made available to any other person without the express written consent of James Tjoa & Associates or the Seller. Offers should be delivered to the office of the Exclusive Listing Agent, James Tjoa & Associates at RE/MAX Metro Realty, attention James Tjoa. To facilitate analysis of offers, offerors are encouraged to provide information relative to funding sources, experience in owning and operating similar properties, familiarity with the market and any other information which is likely to favorably reflect on the offerors ability to close this proposed transaction in a timely manner. Inquiries and tours are to be directed to the Exclusive Listing Agent. Please do not contact the Property. This document has been prepared by James Tjoa & Associates for marketing purposes and general information only. James Tjoa & Associates makes no guarantees, representations or warranties of any kind, express or implied, regarding the information including, but not limited to, warranties of content, accuracy and reliability. Any interested party should undertake their own inquiries as to the accuracy of the information. James Tjoa & Associates excludes unequivocally all inferred or implied terms, conditions and warranties arising out of this documents and excludes all liability for loss and damages arising there from. This publication is the copyrighted property.