

FOR LEASE

1025 SW MARTIN DOWNS BLVD

PALM CITY, FL 34990



\$20.00/SF Gross

±1,253 SF - WEST BRIDGE OFFICE



SUMMARY

PROPERTY DETAILS

Location: 1025 SW Martin Downs Blvd.
Palm City, FL 34990

Space Available: 1,253 SF

Lease Rate: \$20.00/SF Gross

Traffic Count: 41,000 AADT

PROPERTY OVERVIEW

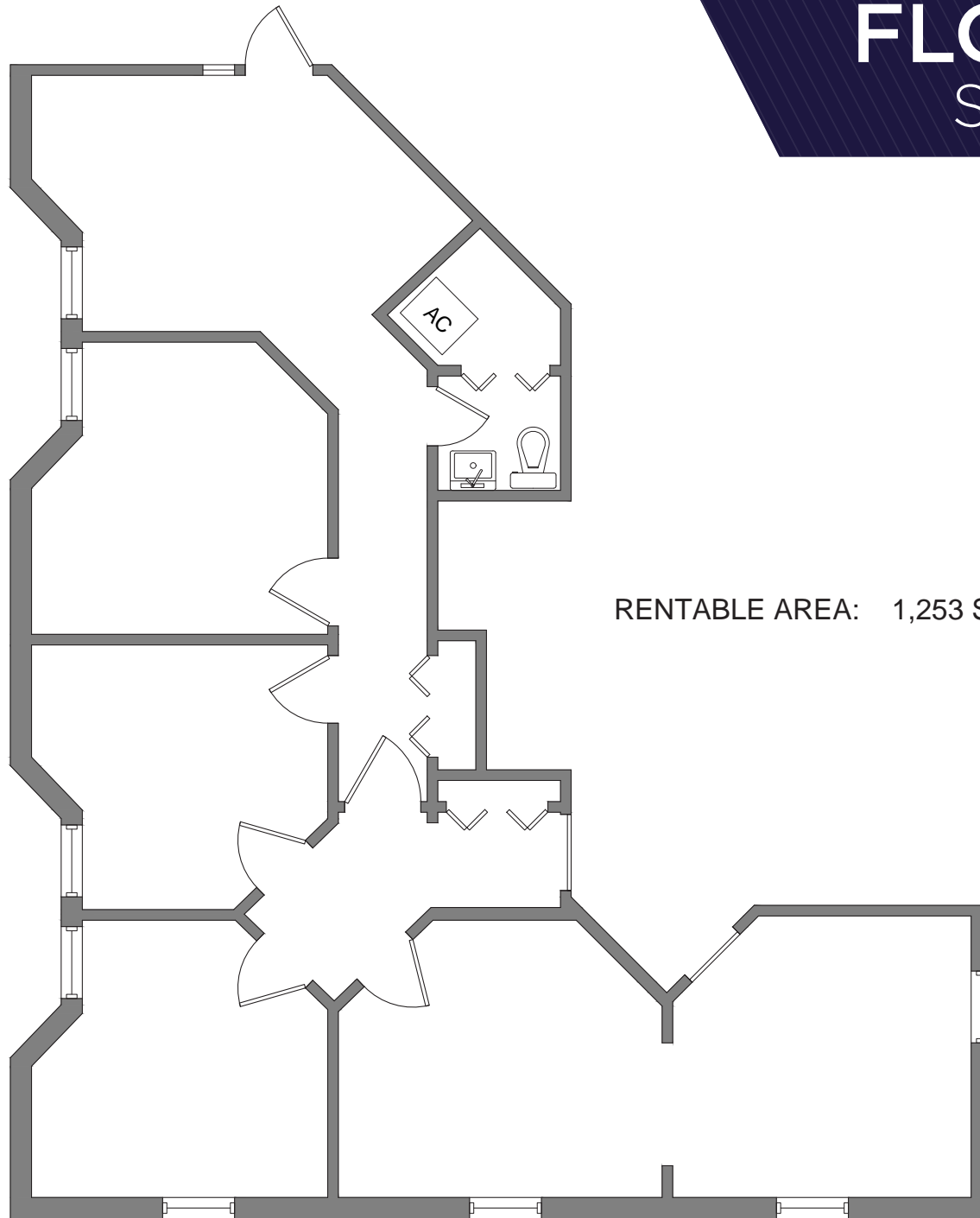
Positioned prominently at 1025 SW Martin Downs Blvd. in Palm City, FL, this newly available corner office suite offers 1,253 square feet of prime professional space. With a high visibility location on one of the area's most traveled corridors—boasting a traffic count of 41,000 AADT—this property provides an exceptional opportunity for businesses seeking exposure and convenience. The suite features a professional layout ideal for a range of office uses.

Surrounded by a thriving mix of professional offices, local restaurants, and both national and local retailers, the property benefits from strong foot and vehicle traffic and is easily accessible to both clients and staff. This location offers a strategic presence in the heart of Palm City's commercial district, making it a compelling choice for businesses aiming to establish or expand their footprint in a well-connected, high-demand area.



FLOORPLAN

SUITE 201/204



RENTABLE AREA: 1,253 SF



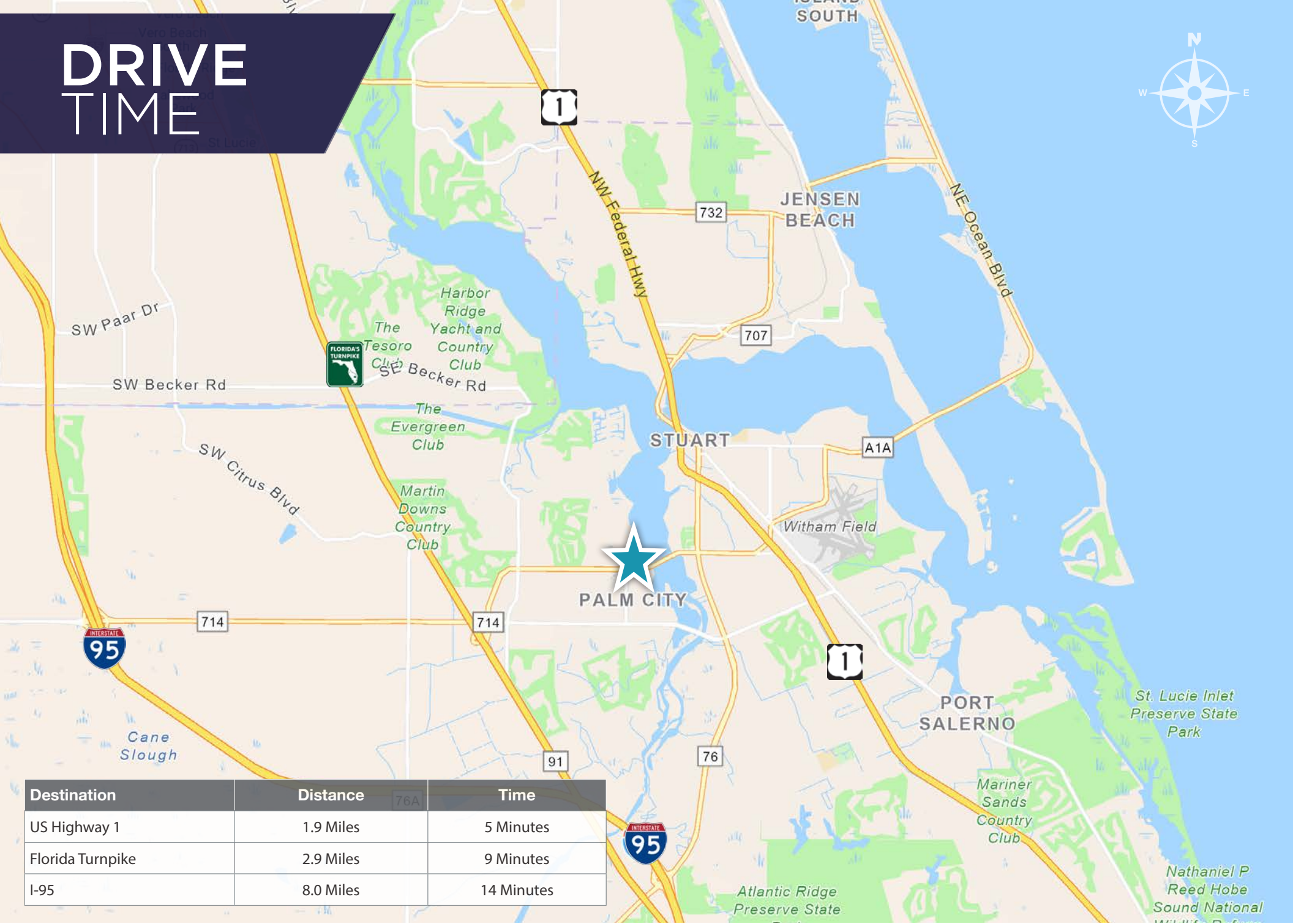
COMMON AREAS



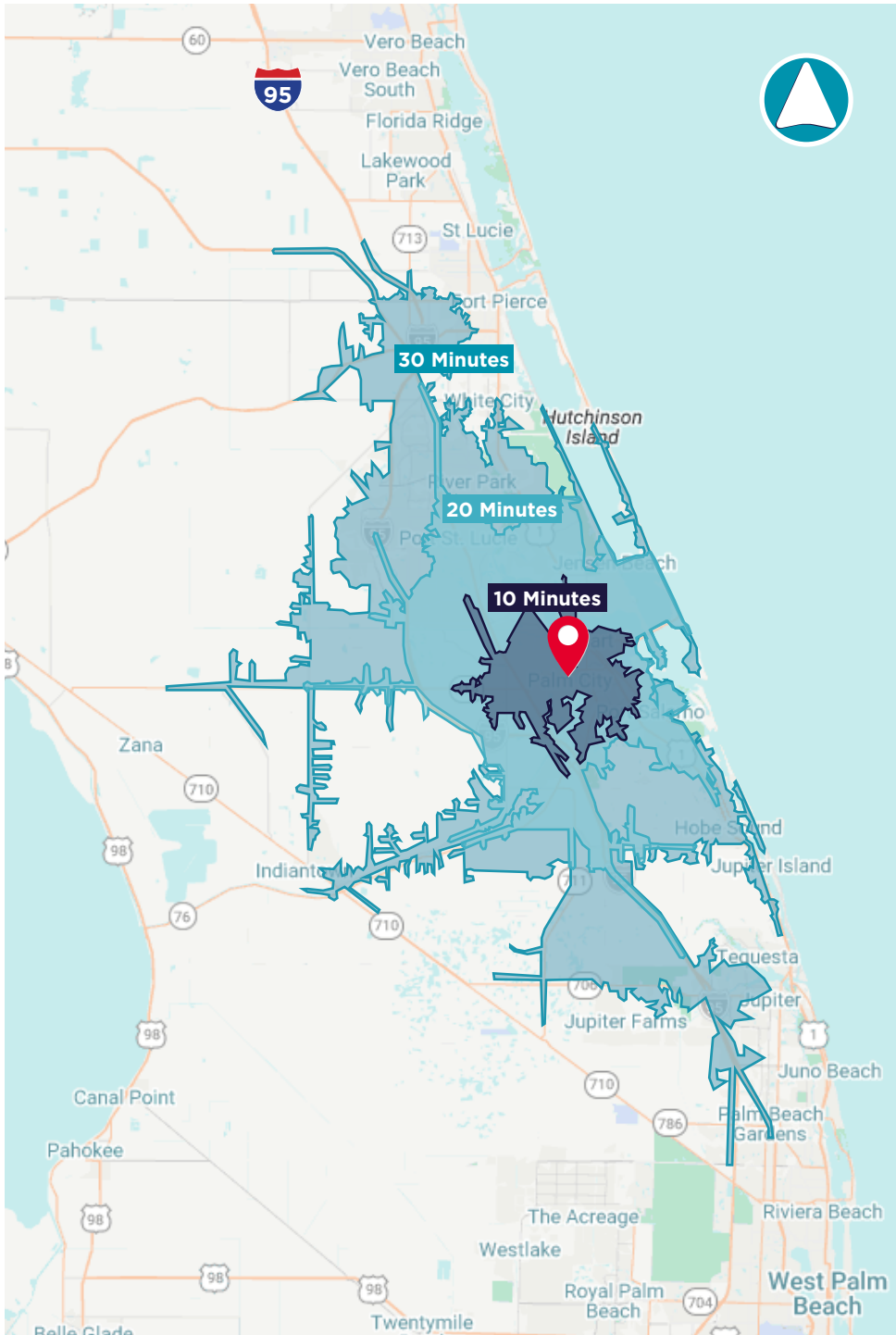
INTERIOR PHOTOS



DRIVE TIME



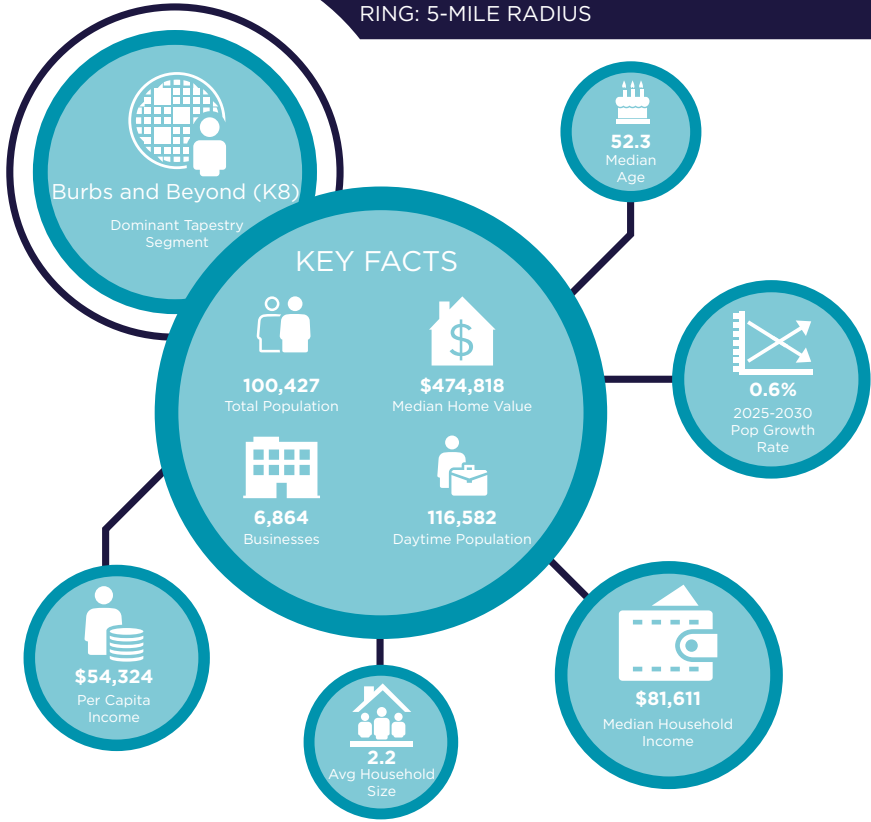
DRIVE TIME



10 MINUTES	20 MINUTES	30 MINUTES
44,328 2010 Population	184,104 2010 Population	350,998 2010 Population
51,483 2024 Population	226,524 2024 Population	453,608 2024 Population
16.1% 2010-2024 Population Growth	23.0% 2010-2024 Population Growth	29.2% 2010-2024 Population Growth
0.39% 2024-2029 (Annual) Est. Population Growth	1.43% 2024-2029 (Annual) Est. Population Growth	1.77% 2024-2029 (Annual) Est. Population Growth
49.3 2024 Median Age	49.0 2024 Median Age	48.7 2024 Median Age
\$112,085 Average Household Income	\$113,977 Average Household Income	\$111,924 Average Household Income
50.9% Percentage with Associates Degree or Better	46.5% Percentage with Associates Degree or Better	45.6% Percentage with Associates Degree or Better
61.3% Percentage in White Collar Profession	58.9% Percentage in White Collar Profession	60.2% Percentage in White Collar Profession

2025 DEMOGRAPHICS

1025 SW MARTIN DOWNS BLVD, PALM CITY, FL 34990
RING: 5-MILE RADIUS



POPULATION

1 Mile:	6,204
3 Mile:	48,515
5 Mile:	100,427

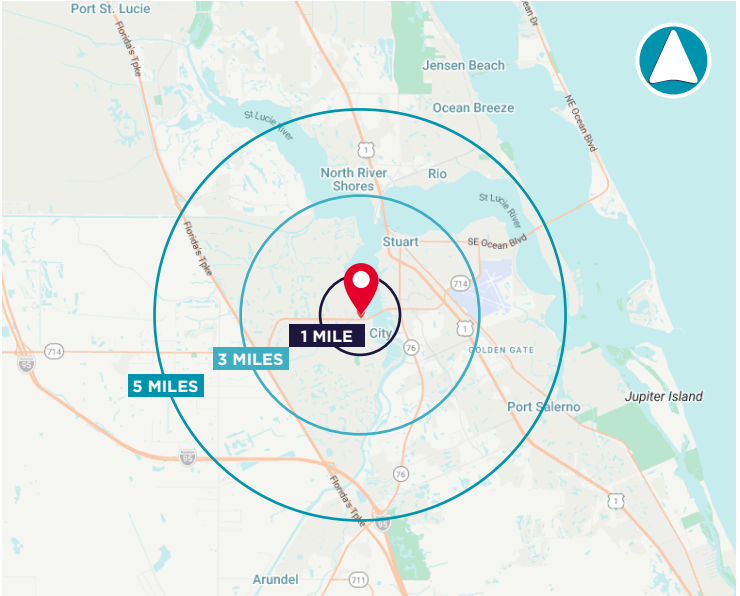
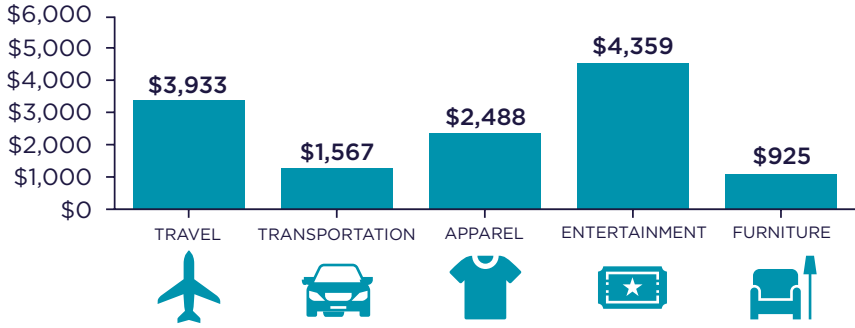
AVERAGE HOUSEHOLD INCOME

1 Mile:	\$106,673
3 Mile:	\$119,611
5 Mile:	\$122,500

MEDIAN AGE

1 Mile:	55.8
3 Mile:	51.1
5 Mile:	52.3

KEY SPENDING FACTS



Source: This infographic contains data provided by Esri (2024, 2029), Esri-Data Axle (2024), Esri-U.S. BLS (2024).

© 2025 Esri
Spending facts are average annual dollars per household

CITY OVERVIEW



Palm City, Florida

Palm City, situated in Martin County, Florida, is a captivating blend of natural beauty and suburban charm. Nestled along the St. Lucie River, this scenic town offers a tranquil escape from the bustling cities nearby. Renowned for its lush landscapes, Palm City showcases an array of palm trees and well-manicured greenery, painting a picturesque backdrop against the Florida sky.

The community prides itself on a family-friendly atmosphere, with top-rated schools, safe neighborhoods, and a strong sense of camaraderie. Residents enjoy a range of recreational opportunities, including boating, fishing, and golfing, thanks to the area's proximity to water bodies and golf courses. The historic downtown area exudes a quaint ambiance, hosting local boutiques, eateries, and cultural events that reflect the town's unique character.

Palm City's location offers easy access to both the Atlantic Coast and the Gulf of Mexico, making it a haven for water enthusiasts and nature lovers. The warm climate ensures year-round outdoor enjoyment, while the town's commitment to preserving its natural surroundings contributes to a sustainable and eco-friendly lifestyle. Palm City, Florida, is more than just a location; it's a lifestyle embraced by those who value a balance between nature's splendor and modern comforts. Whether you seek serene landscapes, engaging community activities, or a peaceful haven to call home, Palm City invites you to experience its one-of-a-kind charm.

REGIONAL OVERVIEW

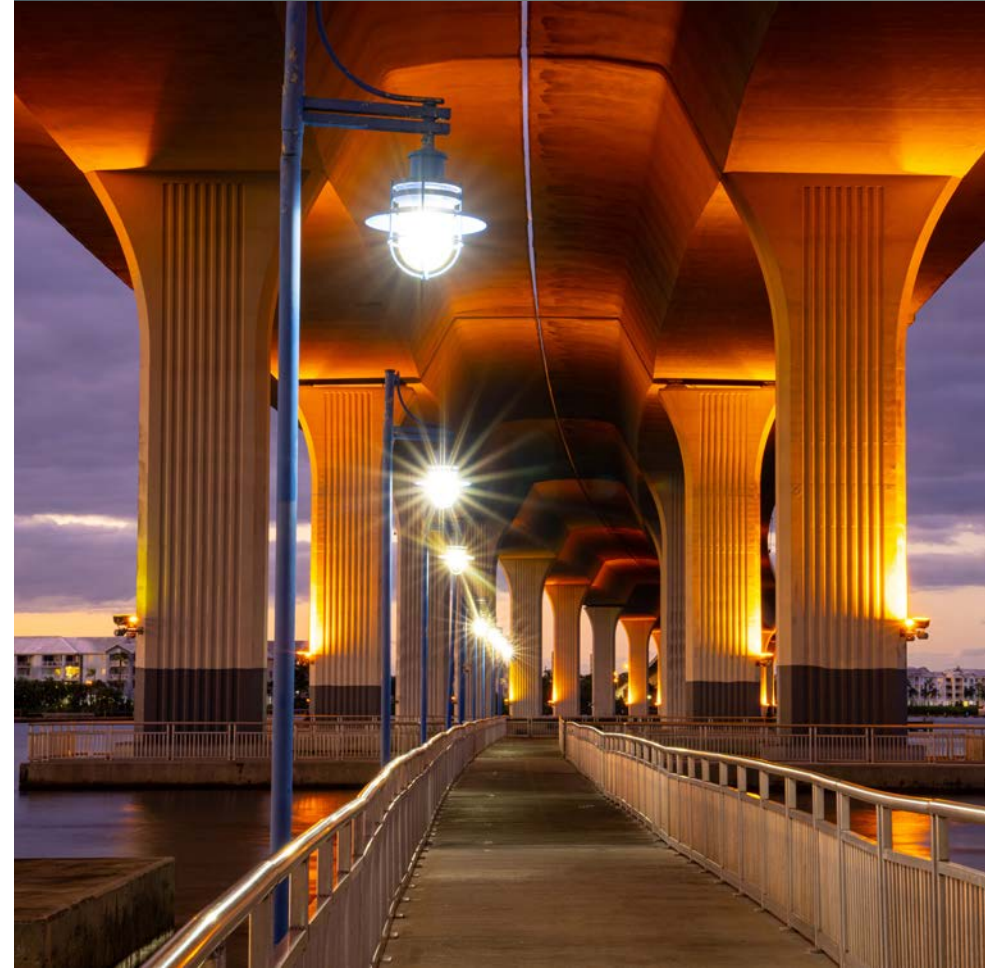
Martin County, Florida

The cities that make up Martin County include Jensen Beach/Rio, Stuart/Sewall's Point, Hutchinson Island, Hobe Sound, Jupiter/ Tequesta, Palm City, Port Salerno and Indiantown. Martin County is a wonderful place to visit and live, with beaches, golf, fishing and boating. The County boasts arts, quaint downtowns with shops, gourmet dining, galleries, museums, historic places, festivals and more.

Martin County is for...

The golf enthusiast... Martin County is home to over 35 world-class golf courses all within a 15-mile radius. The sun worshiper... The County offers its visitors and residents alike some of the finest beaches on the east coast. The discriminating arts shopper...More than 20 galleries participate in a monthly First Thursday gallery night. Many of these galleries are in the historic downtowns of Stuart, Jensen Beach, Port Salerno and Hobe Sound. The music lover...The historic Lyric Theatre offers a wide-array of fist class talent nearly 300 days a year...This acoustically amazing theatre features concerts for all music lovers, from classical to rock and roll, and theatrical performances by local and national talent.

Mark your calendars for a plethora of events to look forward to in Martin County, Florida. The Stuart Air Show, Stuart Boat Show, ArtsFest, and the Martin County Fair are just some of the many events taking place throughout the year. The Treasure Coast Children's Museum, located at Indian Riverside Park, is a great place for kids and families, offering a water play area, fishing, and a riverfront view. Often, there are events in the park including concerts, orchid shows, and more. Indian Riverside Park also features the Maritime and Yachting Museum. Hutchinson Island is home to the Elliott Museum which celebrates the genius of innovation, creativity and the historical events of Martin County. Named after the prolific inventor Sterling Elliott, the museum hosts permanent exhibits showcasing Model A Trucks, early transportation, the history of Stuart and its surrounding regions, and baseball memorabilia. For the scientifically minded and curious kids, the Florida Oceanographic Coastal Center offers fun opportunities to learn about our local ecosystem.



OFFERING SUMMARY

±1,253 SF - WEST BRIDGE OFFICE

1025 SW MARTIN DOWNS BLVD, PALM CITY, FL

FOR LEASE
\$20.00/SF GROSS



Douglas Legler
Senior Director
+1 772 678 7606
doug.legler@cushwake.com



Casey Combs
Director
+1 772 678 7611
casey.combs@cushwake.com



**CUSHMAN &
WAKEFIELD**

©2026 Cushman & Wakefield. All rights reserved. The information contained in this communication is strictly confidential. This information has been obtained from sources believed to be reliable but has not been verified. NO WARRANTY OR REPRESENTATION, EXPRESS OR IMPLIED, IS MADE AS TO THE CONDITION OF THE PROPERTY (OR PROPERTIES) REFERENCED HEREIN OR AS TO THE ACCURACY OR COMPLETENESS OF THE INFORMATION CONTAINED HEREIN, AND SAME IS SUBMITTED SUBJECT TO ERRORS, OMISSIONS, CHANGE OF PRICE, RENTAL OR OTHER CONDITIONS, WITHDRAWAL WITHOUT NOTICE, AND TO ANY SPECIAL LISTING CONDITIONS IMPOSED BY THE PROPERTY OWNER(S). ANY PROJECTIONS, OPINIONS OR ESTIMATES ARE SUBJECT TO UNCERTAINTY AND DO NOT SIGNIFY CURRENT OR FUTURE PROPERTY PERFORMANCE.