

1,568 - 3,362 SF

# GATEWAY OF ROCHESTER HILLS



**FOR LEASE**



## 3950 S Rochester Rd

Rochester Hills, Michigan 48307

### Property Highlights

- Medical Office Suites from 1,533-3,362 SF Available For Immediate Occupancy
- Convenient Location off of Rochester Road just South of M-59
- Minutes from Corewell Health - Troy Campus
- Great Main Road Monument Signage Available
- Join Medical Specialties - Superior Oral & Maxillo Facial Surgery, Henry Ford Reproductive Medicine - Rochester Hills, Serenity Obgyn, Michigan Rheumatology and Wellness Center and Oakland Macomb Cancer Specialists
- Private Entry Available for After Hours/Urgent Care Use
- Fully Prepped MRI Pad



www.naifarberman.com

**Jeff Cavazos**  
Senior Vice President | 248.613.6457  
jcavazos@farberman.com

**Kristi Lawton**  
Vice President | 248.798.9828  
lawton@farberman.com

NO WARRANTY, EXPRESS OR IMPLIED, IS MADE AS TO THE ACCURACY OF THE INFORMATION CONTAINED HEREIN. THIS INFORMATION IS SUBMITTED SUBJECT TO ERRORS, OMISSIONS, CHANGE OF PRICE, RENTAL OR OTHER CONDITIONS, WITHDRAWAL WITHOUT NOTICE, AND IS SUBJECT TO ANY SPECIAL LISTING CONDITIONS IMPOSED BY OUR PRINCIPALS, COOPERATING BROKERS, BUYERS, TENANTS AND OTHER PARTIES WHO RECEIVE THIS DOCUMENT SHOULD NOT RELY ON IT, BUT SHOULD USE IT AS A STARTING POINT OF ANALYSIS, AND SHOULD INDEPENDENTLY CONFIRM THE ACCURACY OF THE INFORMATION CONTAINED HEREIN THROUGH A DUE DILIGENCE REVIEW OF THE BOOKS, RECORDS, FILES AND DOCUMENTS THAT CONSTITUTE RELIABLE SOURCES OF THE INFORMATION DESCRIBED HEREIN. LOGOS ARE FOR IDENTIFICATION PURPOSES ONLY AND MAY BE TRADEMARKS OF THEIR RESPECTIVE COMPANIES. NAI Farberman, INC. CA BRE LIC. #01990696.

# 1,568 - 3,362 SF GATEWAY OF ROCHESTER HILLS



## FOR LEASE



Subject Property

W South Blvd

W South Blvd

Eastlawn Dr

Eastlawn Dr

McLaughlin Dr

Venus

Edgewater Dr

Venus

Edgewater Dr

Rochester Rd

Map data ©2025 Imagery ©2025 Airbus,  
Maxar Technologies



Commercial Real Estate Services, Worldwide.

[www.naifarberman.com](http://www.naifarberman.com)

**Jeff Cavazos**  
Senior Vice President | 248.613.6457  
[jcavazos@farberman.com](mailto:jcavazos@farberman.com)

**Kristi Lawton**  
Vice President | 248.798.9828  
[lawton@farberman.com](mailto:lawton@farberman.com)

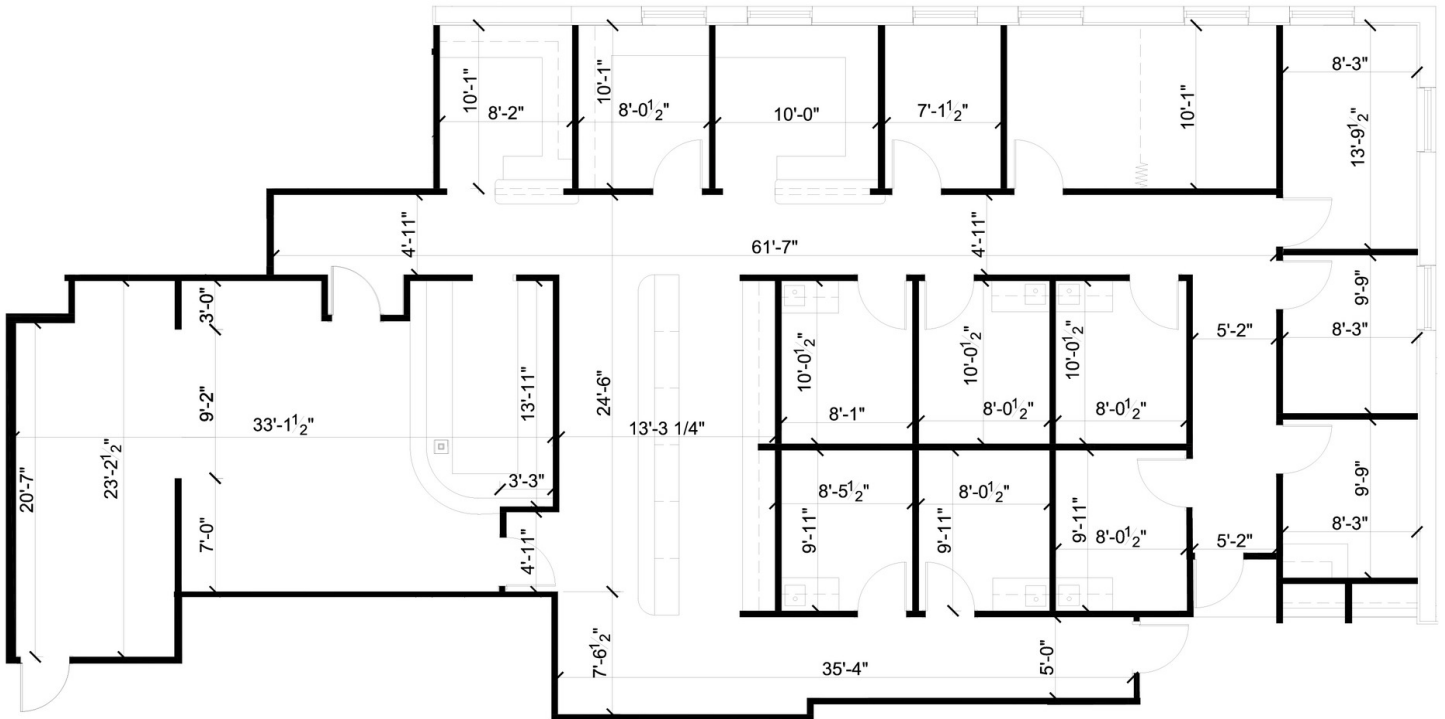
NO WARRANTY, EXPRESS OR IMPLIED, IS MADE AS TO THE ACCURACY OF THE INFORMATION CONTAINED HEREIN. THIS INFORMATION IS SUBMITTED SUBJECT TO ERRORS, OMISSIONS, CHANGE OF PRICE, RENTAL OR OTHER CONDITIONS, WITHDRAWAL WITHOUT NOTICE, AND IS SUBJECT TO ANY SPECIAL LISTING CONDITIONS IMPOSED BY OUR PRINCIPALS. COOPERATING BROKERS, BUYERS, TENANTS AND OTHER PARTIES WHO RECEIVE THIS DOCUMENT SHOULD NOT RELY ON IT, BUT SHOULD USE IT AS A STARTING POINT OF ANALYSIS, AND SHOULD INDEPENDENTLY CONFIRM THE ACCURACY OF THE INFORMATION CONTAINED HEREIN THROUGH A DUE DILIGENCE REVIEW OF THE BOOKS, RECORDS, FILES AND DOCUMENTS THAT CONSTITUTE RELIABLE SOURCES OF THE INFORMATION DESCRIBED HEREIN. LOGOS ARE FOR IDENTIFICATION PURPOSES ONLY AND MAY BE TRADEMARKS OF THEIR RESPECTIVE COMPANIES. NAI Farberman, INC. CA BRE LIC. #01990696.

# 1,568 - 3,362 SF GATEWAY OF ROCHESTER HILLS



## FOR LEASE

### Suite 1350 3,362 SF

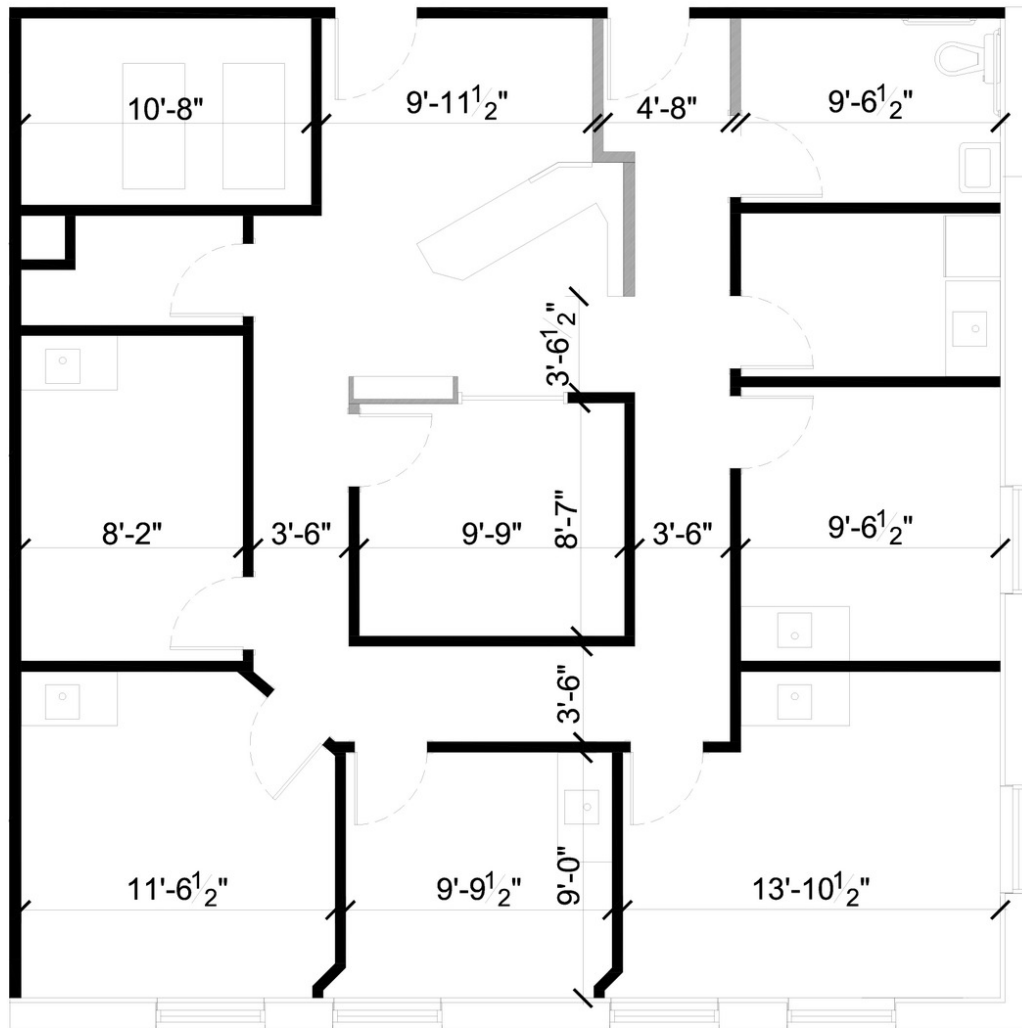


1,568 - 3,362 SF  
GATEWAY OF ROCHESTER HILLS



FOR LEASE

Suite 2150  
1,568 SF



# 1,568 - 3,362 SF GATEWAY OF ROCHESTER HILLS



## FOR LEASE

### Suite 2275 1,533 SF

