



AUSTIN INDUSTRIAL PARK

5214 Burleson Road, Austin, TX 78744

1,250 - 3,750 SF OFFICE/WAREHOUSE - FOR LEASE



- **1,250 - 3,750 SF Office/Warehouse Space FOR LEASE**
- Perfect for small to midsize industrial or warehouse space
- Grade-level roll-up doors on most spaces!
- Easy access to Highway 71, IH-35, 130 Toll Road, and the Austin-Bergstrom Int'l Airport
- Conveniently located on Burleson Rd. just off of Highway 71
- 24/7 Access



Site Plan

Austin Industrial Park



AVAILABILITY	
Suite 106/107	2,000 SF
Suite 110/113	2,500 SF
Suite 206/207	2,000 SF
Suite 314	1,250 SF
Suite 407	1,250 SF
Suite 503/504	2,500 SF
Suite 607	1,250 SF

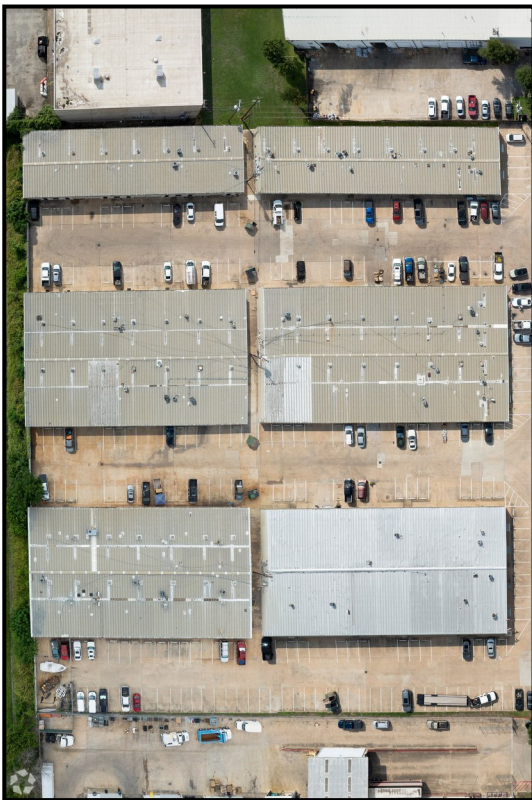
For more information 502 East 11th St., Suite 400
please contact: Austin, Texas 78701

Nick Tarantino, CCIM
 nick@tarantino.com

Tel (512) 302-4500
 www.tarantino.com

Chad Folts
 cfolts@tarantino.com





For more information please contact:

Nick Tarantino, CCIM nick@tarantino.com

Chad Folts cfolts@tarantino.com

Tel (512) 302-4500

www.tarantino.com



DEMOGRAPHICS (2025)

MILE(S)	1	3	5
Total Population	6,437	120,115	286,118
Total Households	2,775	50,853	129,783
Average HH Income	\$80,557	\$99,422	\$118,695

NEARBY



CONTACT US FOR MORE INFORMATION ABOUT THIS PROPERTY:

Nick Tarantino, CCIM

(512) 302 - 4500

nick@tarantino.com

Chad Folts

(512) 302 - 4500

cfolts@tarantino.com