

1155 15TH STREET, WASHINGTON, DC 20005

SHORT-TERM SUBLEASE OPPORTUNITY

4,784 SF IN THE HEART OF EAST END



Suite 410

4,784 SF

RATE

\$30.00 PSF

TERM

Thru January 2027

VIRTUAL TOUR
COMING SOON

 TRANSWESTERN

FEATURES



Walk to over 50+ shops, restaurants, and hotels



Furnished Suite



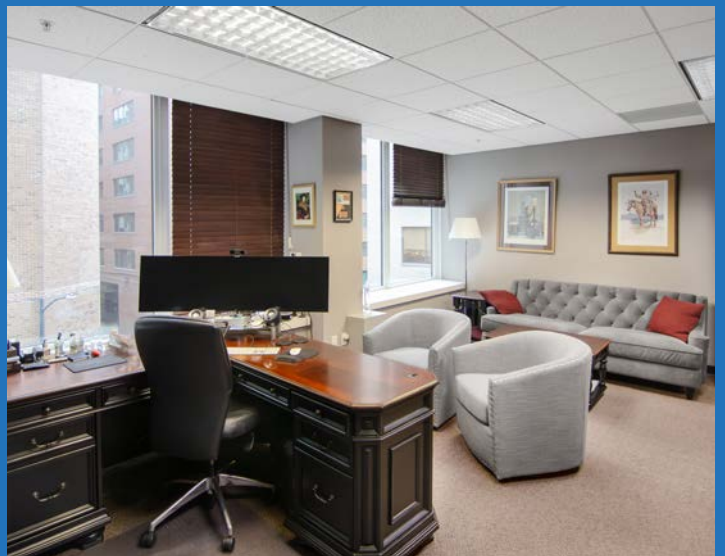
4 block walk to McPherson Square Metro Station — Blue, Orange, & Silver Lines

- ▶ Hotel conference center
- ▶ Concierge services
- ▶ 24-hour valet parking
- ▶ On-site dining at Iron Chef and James Beard Award winner Jose Garces' restaurant, Rural Society
- ▶ In-office catering services
- ▶ Fitness Center with showers, steam room, and sauna
- ▶ Parking available at a ratio of 1 per 1,500 SF

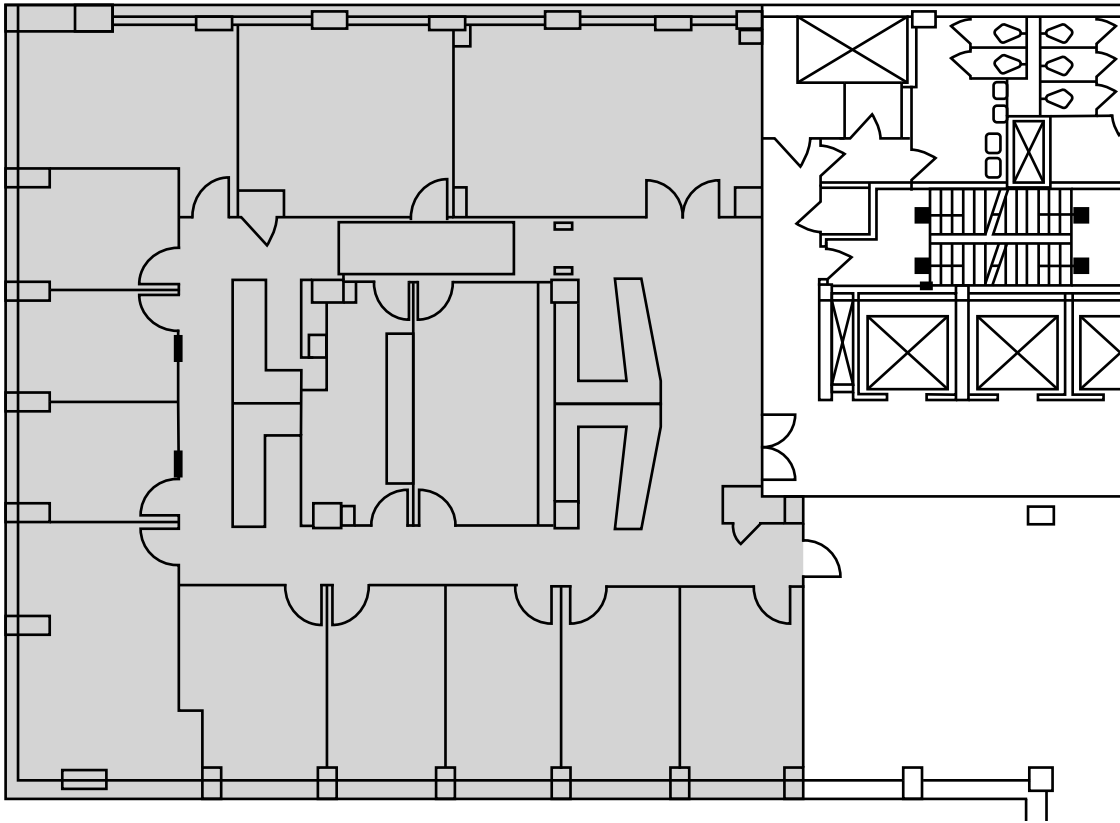
BUILDING AMENITIES



SUITE 410



1155 15TH STREET, WASHINGTON, DC 20005



SPACE OVERVIEW

- ▶ 11 perimeter offices
- ▶ 1 large 12-person conference room
- ▶ Prominent suite entry signage
- ▶ Reception desk
- ▶ Furniture can convey



2000 K Street NW, Suite 1000,
Washington, DC 20006

FOR INFORMATION OR INQUIRIES:

JAKE FOX

jake.fox@transwestern.com / 202.627.1742

JOHN LUGAR

john.lugar@transwestern.com / 202.775.7033

COLLIN BROWN

collin.brown@transwestern.com / 703.749.9404