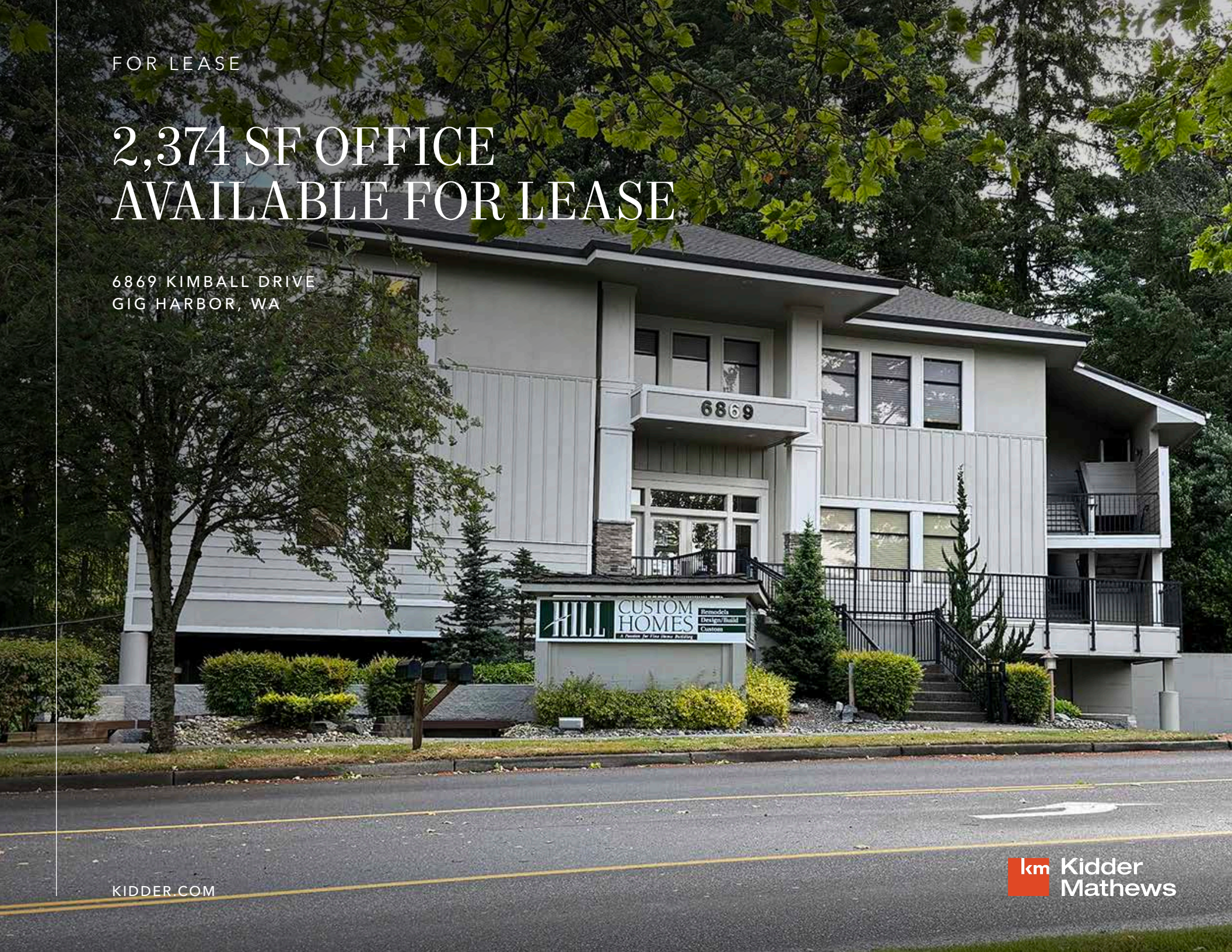


FOR LEASE

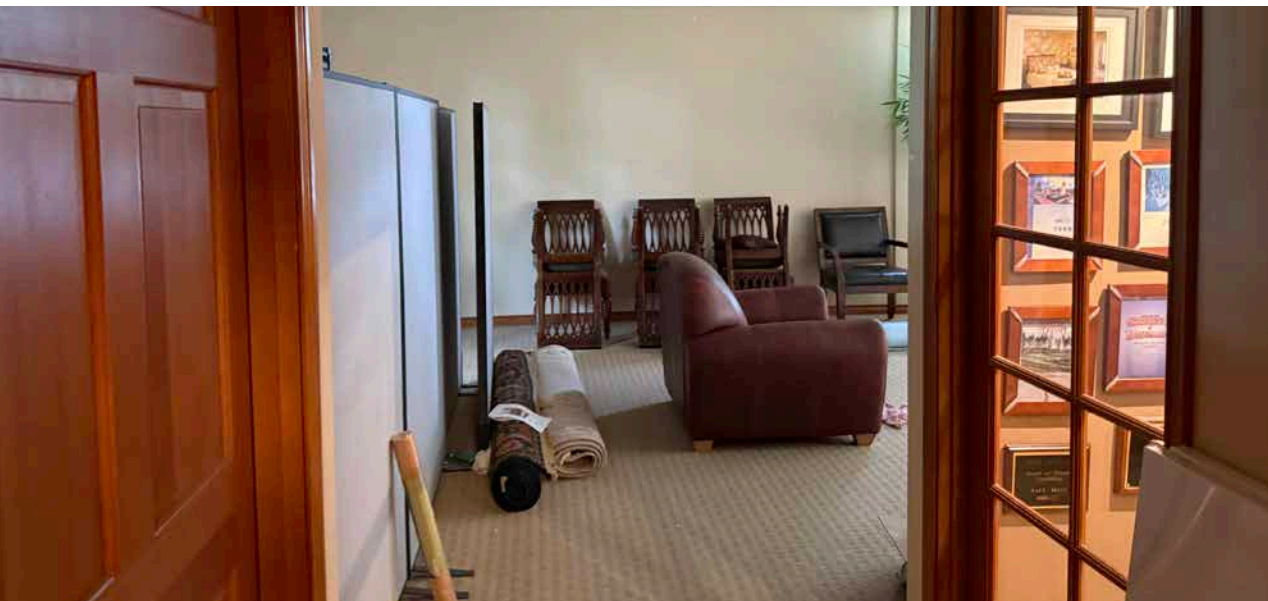
# 2,374 SF OFFICE AVAILABLE FOR LEASE

6869 KIMBALL DRIVE  
GIG HARBOR, WA



KIDDER.COM

**km** Kidder  
Mathews



*Located 3 minutes from downtown  
Gig Harbor*

YEAR BUILT 1998

YEAR RENOVATED 2010

TOTAL BUILDING SF 4,748 on two floors

PARKING

Ample free parking available on-site for staff and visitors. 11 covered parking spots.

*2,374 SF*

FIRST FLOOR

*\$6,000*

MONTH GROSS - LEASE RATE

6869 KIMBALL DRIVE

GRANDVIEW ST

STINSON AVE

PIONEER WAY

8,269+ VPD

21,855+ VPD

KIMBALL DR

WOLOCHET DR



ERICKSON ST,



KIDDER MATHEWS

AVAILABLE FOR LEASE



# 6869 KIMBALL DRIVE



LOCATED AT THE  
INTERSECTION OF  
WOLLOCHET DR  
AND KIMBALL DR



FLEXIBLE FIRST  
FLOOR LAYOUT



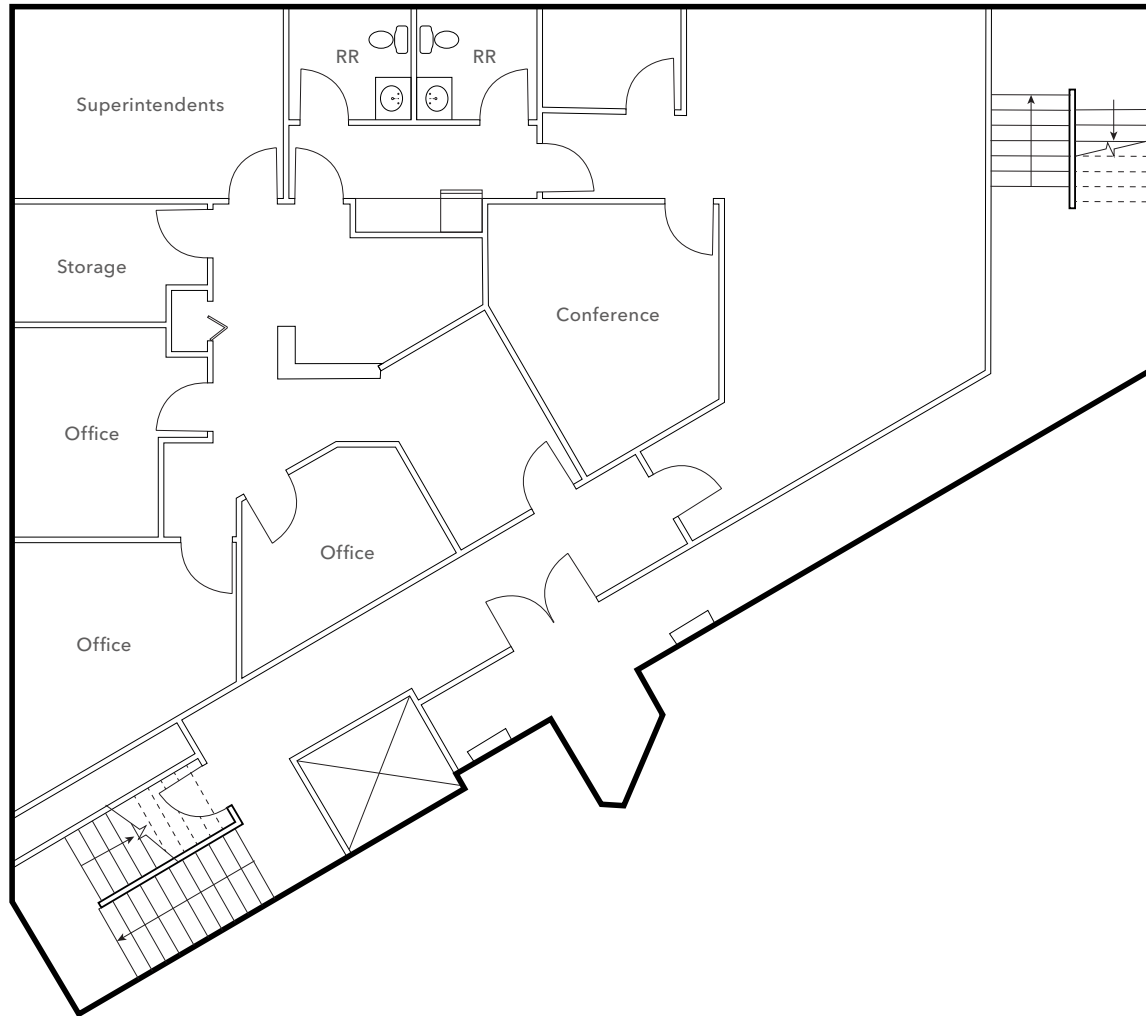
QUICK ACCESS  
TO SR - 16



COVERED  
PARKING



# FLOOR PLAN



FIRST FLOOR

2,374 SF

AVAILABLE

\$6,000

MONTH GROSS - LEASE RATE

*AVAILABILITY*

CONTACT BROKER

Flexible first floor layout featuring private offices, open workspaces, conference room, kitchenette, and in-suite restroom.



# HIGHLY- ACCESSIBLE LOCATION

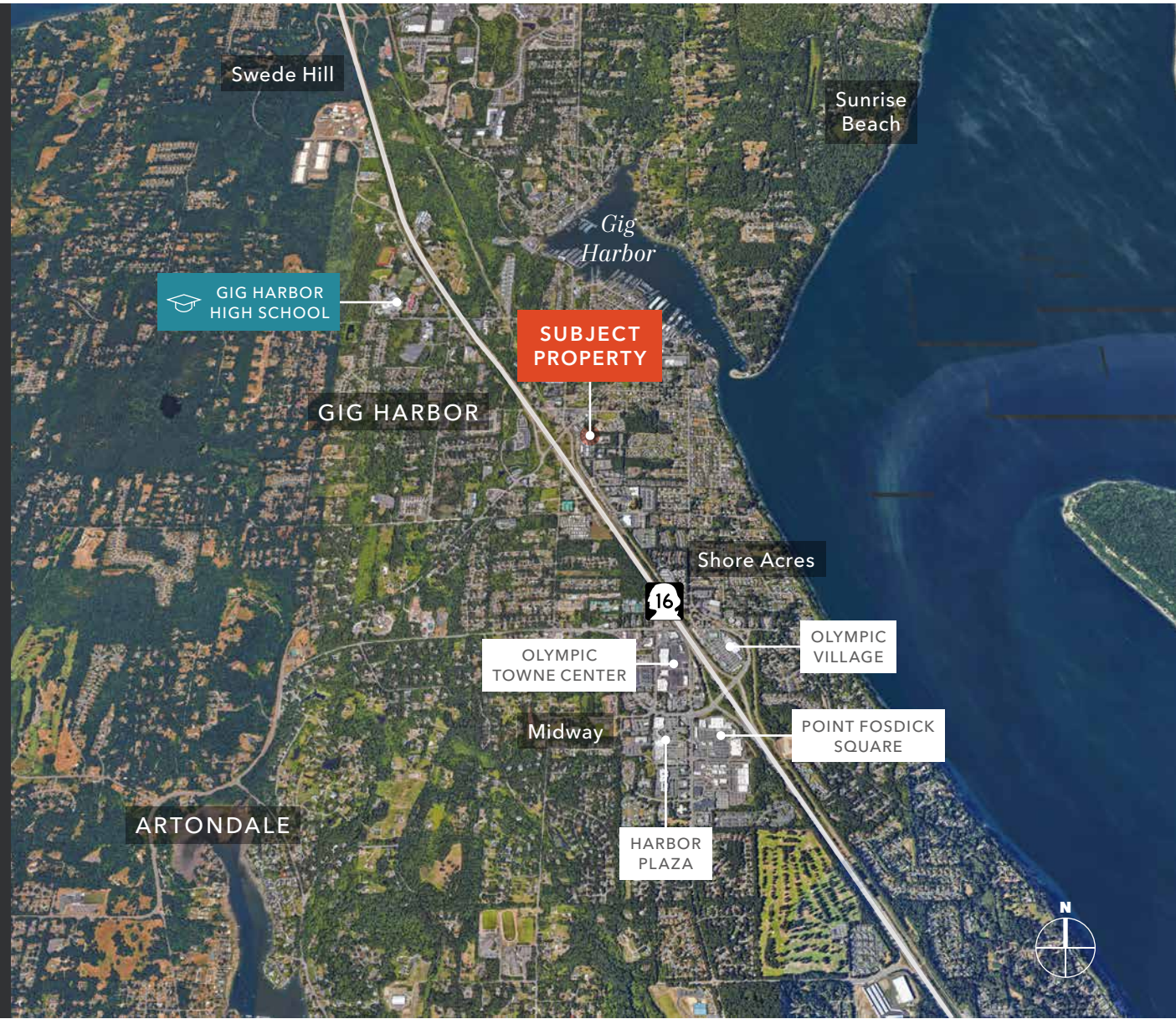
Excellent access to WA-16 and I-5, providing quick routes to Pierce and Kitsap Counties

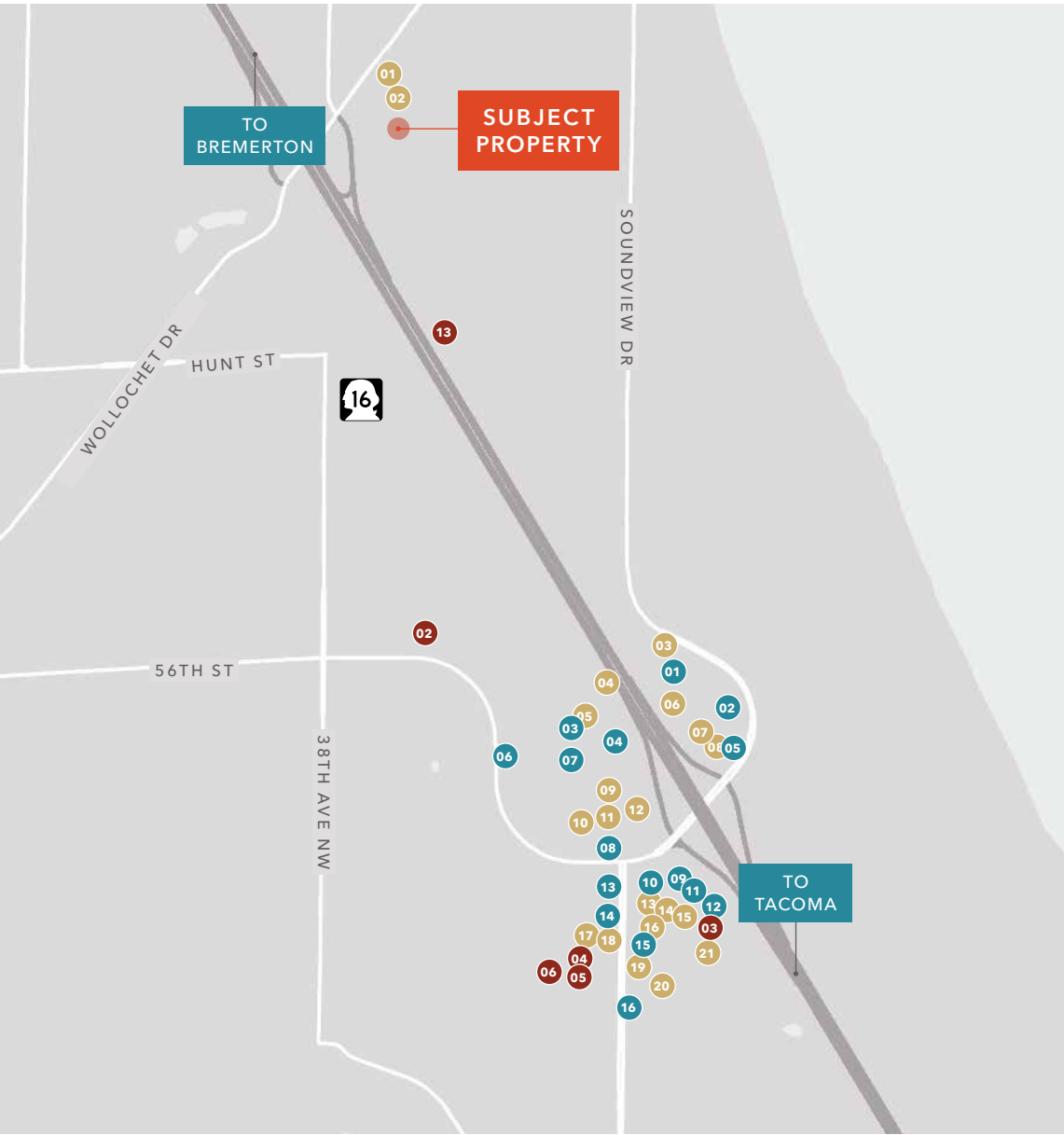
Walkable to a variety of retail and dining options along Kimball Drive

Located within minutes to Downtown Gig Harbor attractions

**1 MIN**  
HIGHWAY 16

**15 MIN**  
INTERSTATE 5





## NEARBY AMENITIES

### RESTAURANTS & BARS

- 01 Starbucks
- 02 Burger King
- 03 The Original Pancake House
- 04 Papa John's
- 05 Starbucks
- 06 Carl's Jr
- 07 McDonald's
- 08 Round Table
- 09 Dairy Queen
- 10 Jimmy John's
- 11 Papa Murphy's
- 12 KFC
- 13 Menchie's
- 14 Chipotle
- 15 Applebee's
- 16 Jersey Mike's
- 17 Subway
- 18 Domino's Pizza
- 19 Starbucks
- 20 Panera Bread
- 21 Ben & Jerry's

- 06 Anytime Fitness
- 07 PetSmart
- 08 Keybank
- 09 Michaels
- 10 Columbia State Bank
- 11 Orangetheory Fitness
- 12 Safeway
- 13 Chase Bank
- 14 Ace Hardware
- 15 Bank of America
- 16 Marshalls

### MEDICAL

- 01 Franciscan Medical Clinic
- 02 Happy Kids Dentistry
- 03 MultiCare Indigo Urgent Care
- 04 Peninsula Family Medical Center
- 05 Franciscan Urgent Care
- 06 Gig Harbor Health & Rehabilitation

### LIFESTYLE & FITNESS

- 01 Goodwill
- 02 Ulta Beauty
- 03 Fred Meyer
- 04 Wells Fargo
- 05 Ross

# DEMOGRAPHICS

## POPULATION

	1 Mile	3 Miles	5 Miles
2025 ESTIMATED	6,856	28,738	69,021
2030 PROJECTION	7,040	29,274	70,433
2020 CENSUS	6,546	27,874	68,075
PROJECTED GROWTH 2025 - 2030	0.5%	0.4%	0.4%

## MEDIAN AGE & GENDER

	1 Mile	3 Miles	5 Miles
MEDIAN AGE	50.5	46.2	46.3
% FEMALE	52.3%	50.4%	49.6%
% MALE	47.7%	49.6%	50.4%

## HOUSEHOLDS

	1 Mile	3 Miles	5 Miles
2025 ESTIMATED	3,148	11,670	28,869
2030 PROJECTED	3,270	12,037	29,883
2020 CENSUS	2,826	11,049	27,535
OWNER-OCCUPIED	62.9%	70.7%	72.0%
RENTER-OCCUPIED	37.1%	29.3%	28.0%

## INCOME

	1 Mile	3 Miles	5 Miles
2025 ESTIMATED INCOME	\$172,076	\$177,039	\$178,128
2030 PROJECTED HH INCOME	\$173,000	\$177,445	\$177,959
ANNUAL CHANGE 2025 - 2030	0.01%	-	-

## EMPLOYMENT

	1 Mile	3 Miles	5 Miles
TOTAL BUSINESSES	866	2,341	3,832
TOTAL EMPLOYEES	4,614	13,376	21,400
WHITE COLLAR WORKERS	2,286	9,470	23,342
BLUE COLLAR WORKERS	941	3,803	9,129

## EDUCATION

	1 Mile	3 Miles	5 Miles
SOME HIGH SCHOOL	3.8%	3.4%	2.9%
HIGH SCHOOL DIPLOMA	17.6%	15.6%	16.8%
SOME COLLEGE	19.2%	20.2%	20.0%
ASSOCIATE	10.8%	9.8%	9.3%
BACHELOR'S	25.9%	28.5%	28.9%
GRADUATE	21.9%	21.9%	21.1%

Data Source: ©2026, Sites USA

# 6869 KIMBALL DRIVE



*Exclusively leased by*

**BRUCE BARKER, MBA, CCIM**

Vice President

253.341.0765

bruce.barker@kidder.com

**KIDDER.COM**

This information supplied herein is from sources we deem reliable. It is provided without any representation, warranty, or guarantee, expressed or implied as to its accuracy. Prospective Buyer or Tenant should conduct an independent investigation and verification of all matters deemed to be material, including, but not limited to, statements of income and expenses. Consult your attorney, accountant, or other professional advisor. All Kidder Mathews designs are the sole property of Kidder Mathews. Branded materials and layouts are not authorized for use by any other firm or person.

