

7705-7789 NW 48th Street
Doral, Florida

LEASED BY:
STREAM



Kurv Doral II Miami



Q1 2027

Completion Date

270,068 SF

Available Space

KURVINDUSTRIAL.COM

Two-Building Development

Kurv Doral II, located in Miami's industrial corridor, is a cutting-edge development offering premium design and superior connectivity to meet the demands of modern logistics and specialty distribution. Purpose-built for flexibility and scale, this two-building, 270,068 SF Class A+ project blends high-end image with unmatched connectivity to highways, the airport, and Miami's amenity core.



Unit Optionality

Building 1

156,311 SF

Divisible to:	±35,000 SF
Clear height:	36'
Exterior docks:	40
Building depth:	195'
Drive-in doors:	2 (12' x 14')
Truck court:	180' (shared)
Speed bay:	60'

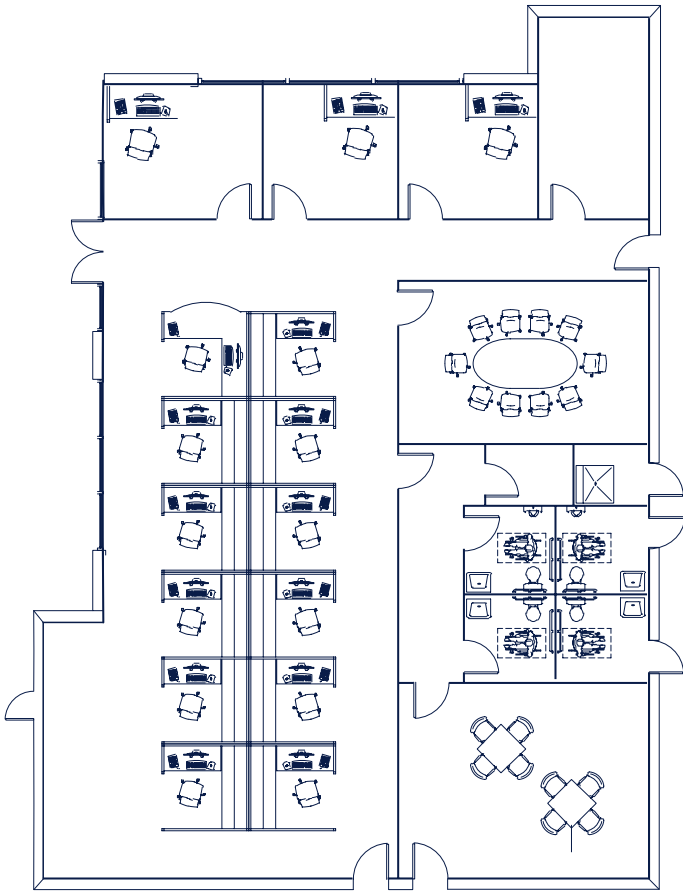
Building 2

113,757 SF

Divisible to:	±26,000 SF
Clear height:	36'
Exterior docks:	43
Building depth:	165'
Drive-in doors:	2 (12' x 14')
Truck court:	180' (shared)
Speed bay:	60'



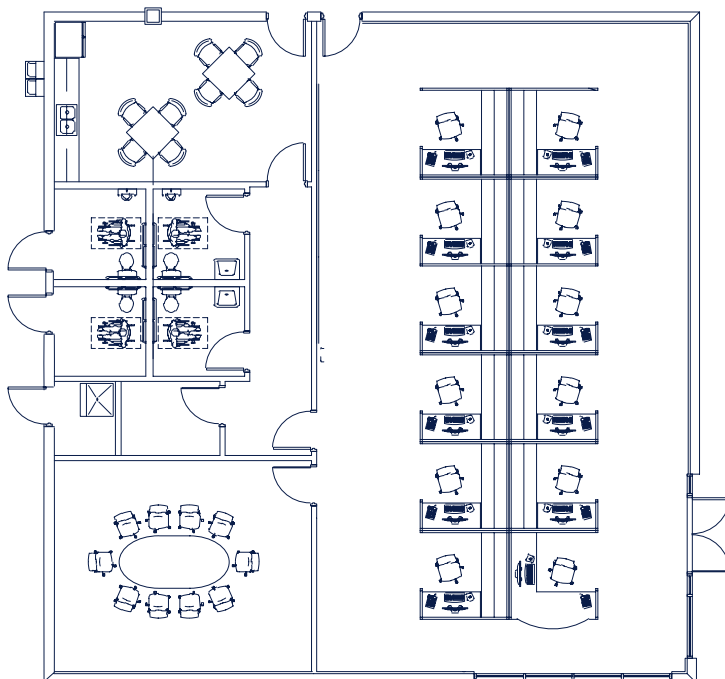
SPEC OFFICE



Building 1

3,470 SF

SPEC OFFICE

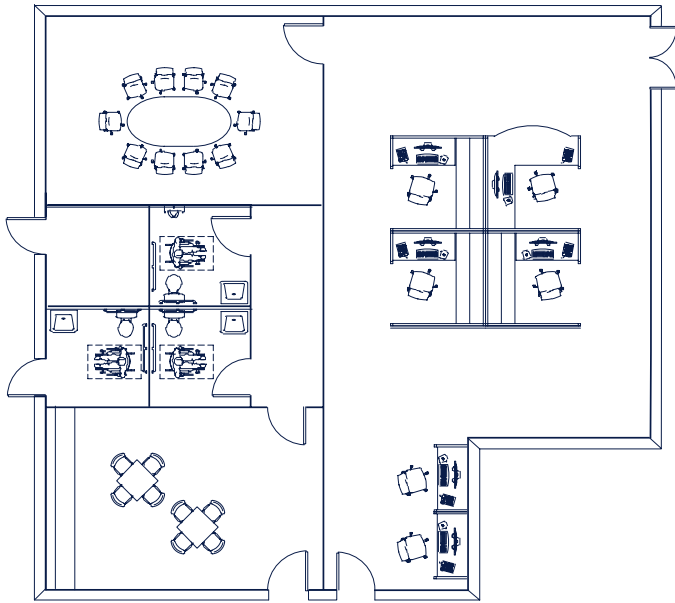


Building 2

2,672 SF

SPEC OFFICE 1

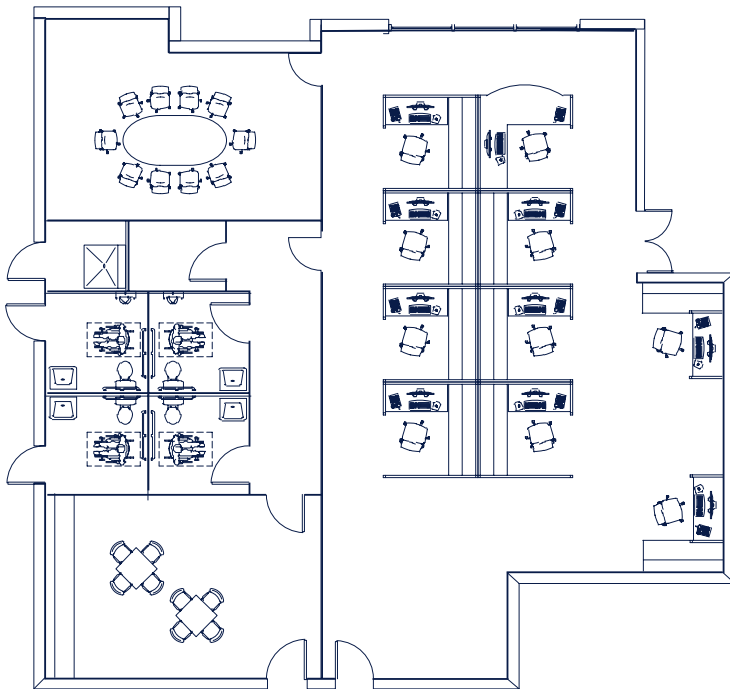
SPEC OFFICE



Building 2

2,036 SF

SPEC OFFICE 2



Building 2

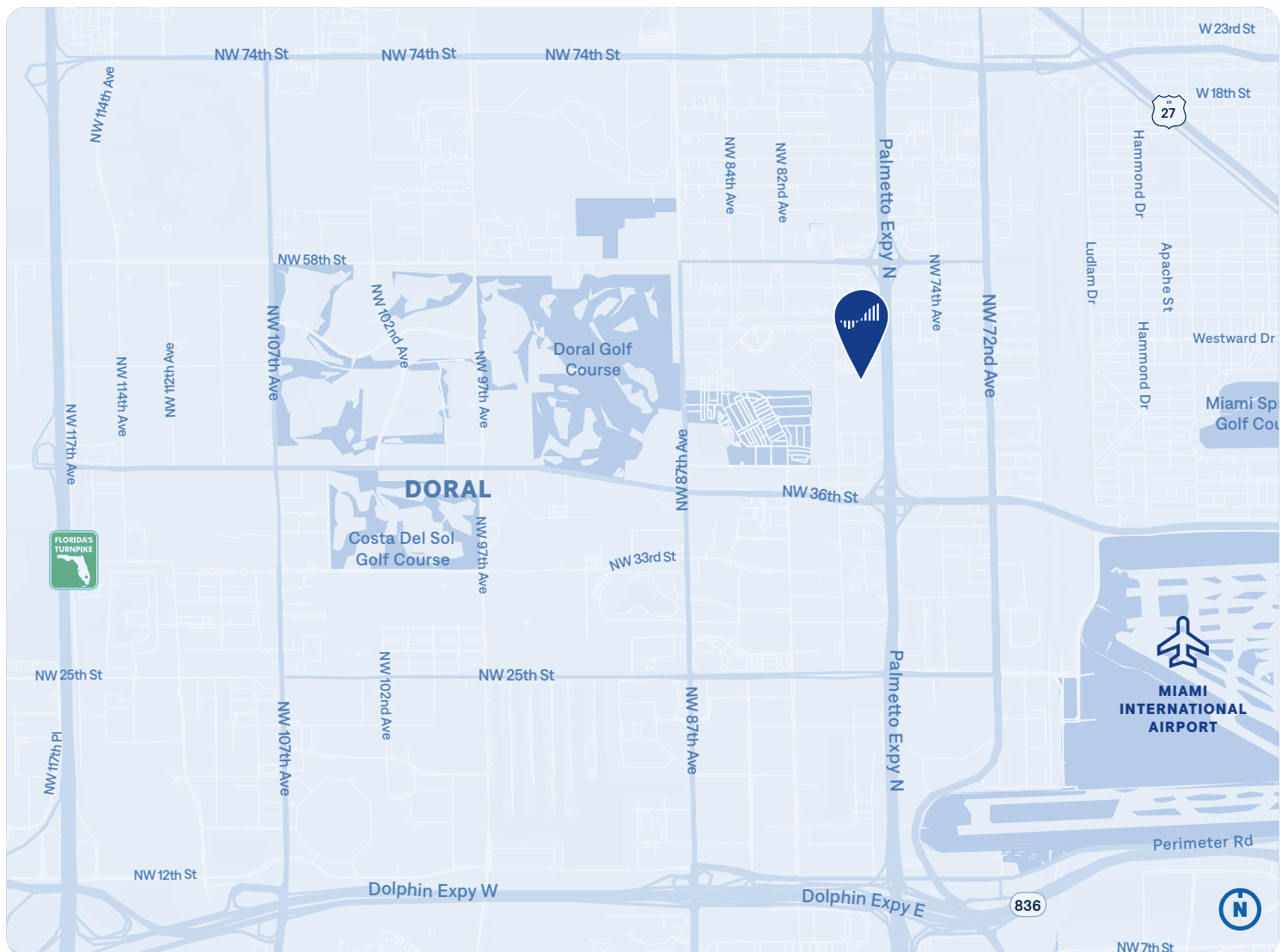
2,325 SF

SPEC OFFICE 3

Strategic Logistics Location

Class A+ Industrial New Construction

- Located within 15 miles of Port Miami and Miami International Airport, offering direct access to global import/export supply chains
- Remarkable proximity to Miami Int'l Airport (3 miles), supporting rapid air freight and time-sensitive cargo operations
- Immediate access to SR-826 (Palmetto Expy) providing superior access to I-75, Florida's Turnpike, and SR-836 (Dolphin Expy)
- High-volume corridor with $\pm 241,000$ daily vehicle count (2024 CoStar)



Blue chip corporate neighbors



Chicago, Dallas • Los Angeles • Miami • New Jersey • Seattle



76M+ SF

Acquired & Developed
since 2000

Kurv Industrial is a vertically integrated industrial real estate investment and operating platform. The firm acquires, develops, and operates institutional-quality assets in the high-barrier, supply-constrained markets of Chicago, Dallas, Los Angeles, Miami, New Jersey, and Seattle.

Grounded in a tradition of excellence and driven by a forward-looking vision, Kurv leverages local market insight, operational rigor, and disciplined execution to create value for investors, partners, and communities. Since its inception in 2000, Kurv has successfully acquired and developed over 76 million square feet of industrial facilities.

Our Commitment to Sustainability

As stewards of sustainability, resilience, and regeneration, our vision is to deliver exceptional value for our investors, employees, tenants, and communities through superior ESG performance.



TERMS

Available on a new lease direct from the landlord.

LEASING INFORMATION

Please contact listing agents below.



John Mejia
jmejia@kurvindustrial.com
(786) 301-2757

Steve Medwin, SIOR, CCIM
steve.medwin@streamrealty.com
(305) 615-4415

Nick Wigoda, SIOR
nick.wigoda@streamrealty.com
(305) 615-4461