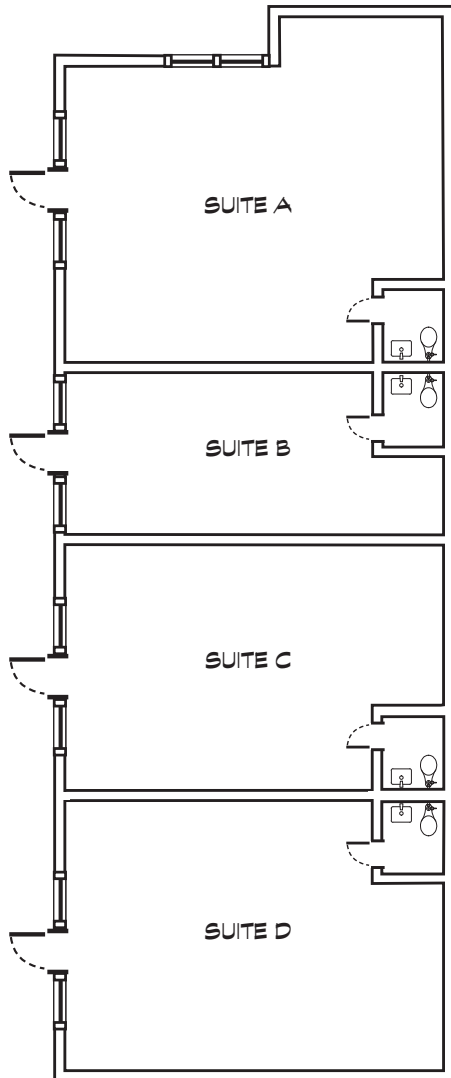


FLOOR PLAN



EXECUTIVE SUMMARY:

- +/- 2,800 sf
- 4 tenant configuration
- 11 parking spaces
- +/- 0.238 acre parcel
- Yolo County APN 006-572-002
- Zoning: DMU - Downtown Mixed USE
- Ste. A 869 sf
- Ste. B 504 sf
- Ste. C 702 sf
- Ste. D 702 sf
- \$2.10 psf plus utilities

LOCATION DESCRIPTION:

The gateway to thriving Downtown Woodland
½ block to Yolo County Courthouse

EXCLUSIVE AGENT: **DAVID MACKO**

916-443-1500
916-443-1556 FAX

dmacko@norcalcommercial.net
CA DRE LIC #01413910



916-443-1500 2747 Riverside Blvd.
916-443-1556 FAX Sacramento, CA 95818
CA DRE LIC #C01929348

The above information while not guaranteed has been secured from sources we believe to be reliable. However, we have not verified its accuracy and make no guarantee, warranty, or representation about it. It is submitted subject to the possibility of errors, omissions, change of price or rental rate, or other conditions, prior lease, sale, financing, or withdrawal without notice. We include projections, opinions, assumptions or estimates for example only, and they may not represent current or future performance of the property. You and your tax, legal, and other professional advisors should conduct your own independent investigation of all aspects of the property and transaction.