



**WILLIAM - GREEN**  
REAL ESTATE

*Specialized in all your Real Estate needs in  
Williamsburg and Greenpoint.*

**Michal Kuras**

Real Estate Broker

[williamgreenre@gmail.com](mailto:williamgreenre@gmail.com)

646.284.2026

**Danny Duffoo**

Real Estate Broker

[dannywgrealty@gmail.com](mailto:dannywgrealty@gmail.com)

347.355.9905



## Prime Retail Opportunity – 131 North 6th Street, Williamsburg

Positioned in the heart of North Williamsburg, 131 North 6th Street offers a highly visible ground-floor retail opportunity in one of Brooklyn's most established shopping corridors. Surrounded by a strong mix of national brands and boutique retailers, this location benefits from consistent foot traffic and a proven retail environment.

The space is located within a 4-story mixed-use building with five residential units above, providing built-in neighborhood traffic. The retail unit consists of approximately 2,135 square feet on the ground floor, offering an efficient layout suitable for a wide range of retail, showroom, or service-oriented uses.

The immediate block is anchored by leading retailers including Nike, Patagonia, Warby Parker, Everlane, and Urban Outfitters, along with a strong mix of lifestyle brands and local operators. This concentration of tenancy makes North 6th Street one of Williamsburg's most sought-after retail corridors.

The surrounding area continues to benefit from strong residential density and destination traffic, supported by nearby attractions such as Domino Park and the ongoing Domino development. The property is conveniently located near the Bedford Avenue L train, JMZ lines, East River Ferry, and Williamsburg Bridge, ensuring accessibility from across Brooklyn and Manhattan.

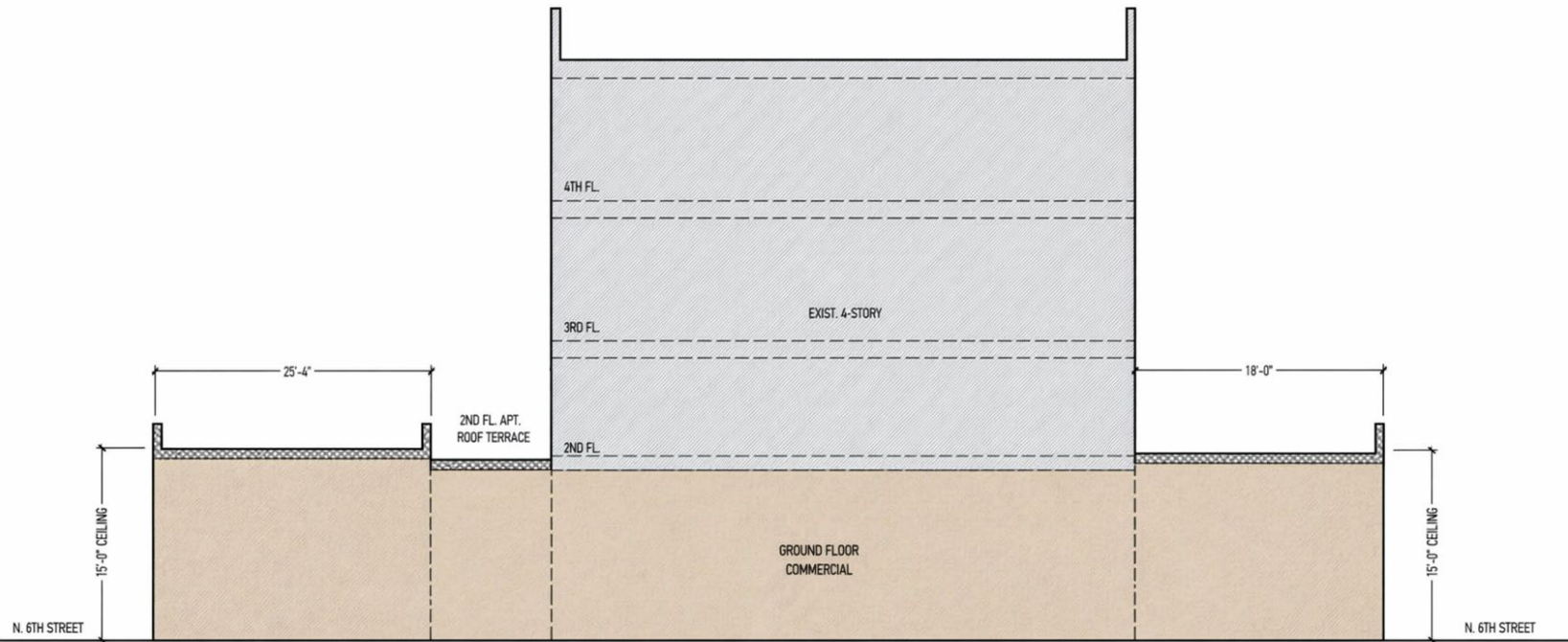
Asking Rent: \$30,000 per month

Size: 2,135 SF

Price Per SF: ~\$14.05/SF monthly | ~\$168.60/SF annually

Availability: May 2027

This is an ideal opportunity for an established operator or brand to secure a presence in one of Brooklyn's most active and high-performing retail corridors.



03 LONGITUDINAL SECTION  
SCALE: 1/8" = 1'-0"



# On the block



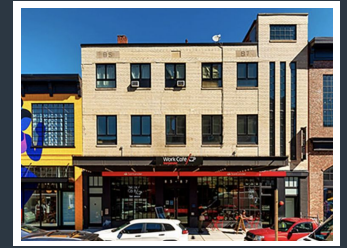
**DS & DURGA and Buck Mason**  
126 and 128 N 6th Street



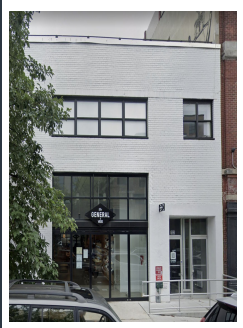
**Nike** 81 N 6th Street



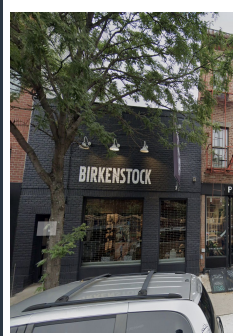
**Patagonia** 70 N 6th Street



**Santander** 85-87 N 6th Street



**Vans** 102 N 6th Street



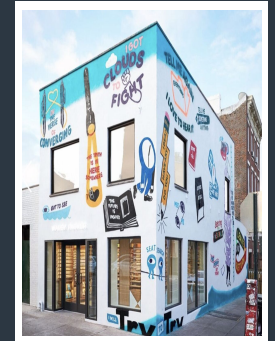
**Birkenstock** 111 N 6th Street



**Parachute** 113 N 6th Street



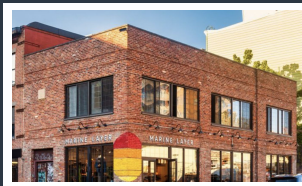
**Everlane** 104 N 6th Street



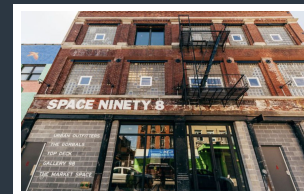
**Warby Parker**  
124 N 6th Street



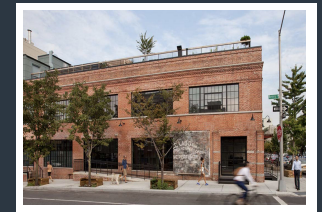
**Aland** 92-94 N 6th Street



**Marine Layer** 115 N 6th Street

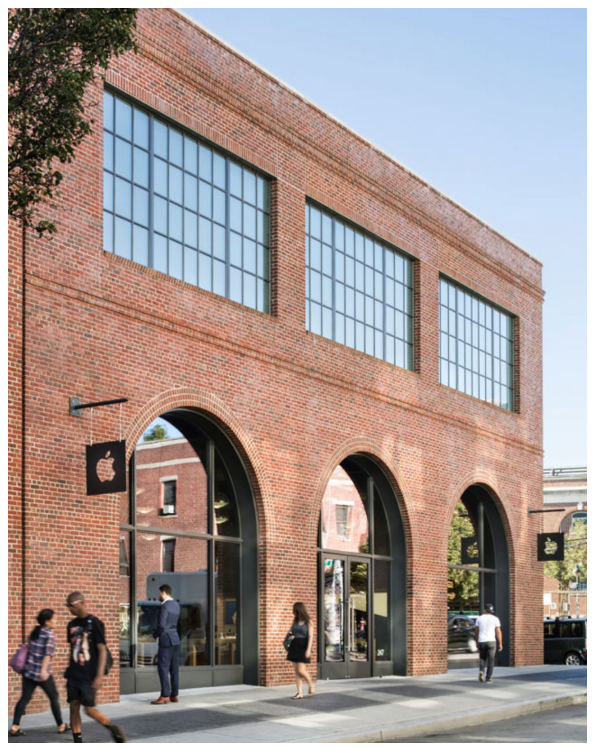


**Urban Outfitters** 98 N 6th Street



**Le Labo** 120 N 6th Street

# Local business



Apple Williamsburg 247 Bedford Avenue



# Where to eat



**Sundays in Brooklyn** 348 Wythe Avenue



**Tacocina** Domino Park



**Sea** 114 North 6th Street



**Cafe Mogador** 133 Wythe Avenue



**Antica Pesa** 115 Berry Street



**Aska** 47 South 5th Street



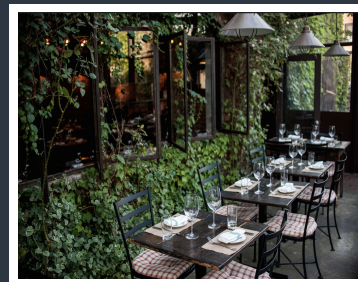
**12 Chairs** Wythe Avenue



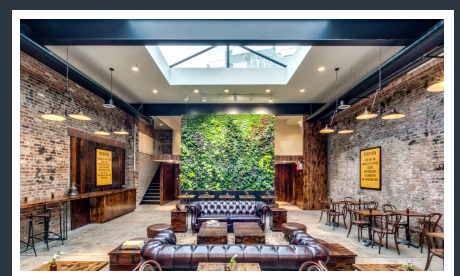
**The Williamsburg Hotel** 96 Wythe Ave.



**Peter Luger** 178 Broadway



**Aurora** 70 Grand Street



**Devocion** 69 Grand Street

# Attractions and future projects



Domino Park Kent Avenue Brooklyn, 11249

<https://www.dominopark.com/in-the-park>



Domino Development proposed plans

# Transportation



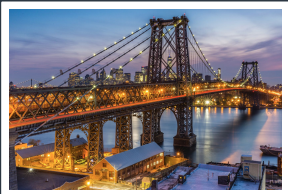
L train Bedford Avenue stop - 10 Blocks - 10 min.



J M Z trains Broadway Street stop - 8 Blocks - 8 min.



North 7th Street Ferry - 9 Blocks - 9 min.



Williamsburg Bridge - 5 Blocks - 5 min.

# Local map

