

Midtown Medical Plaza

Located in Charlotte's high-density medical hub, Midtown Medical Plaza is a Class A medical office building on the Novant Health Presbyterian Medical Center campus. Its on-site amenities, adjoining parking deck, and sky bridge access to nearby medical facilities support a seamless care delivery experience.

Space for Lease
1918 Randolph Road
Charlotte, NC 28207



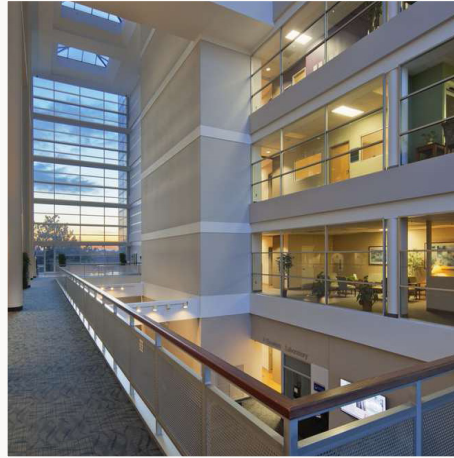
Total SF
252,198 SF



Available SF
3,195 - 12,773 SF



Property Highlights



Premier Campus Location

Located on the Novant Health Presbyterian Medical Center campus and nearby Atrium Health Mercy, this location places physicians in the heart of Charlotte's growing medical district.



On-Site Management

To ensure a safe, well-maintained, and efficient environment for care, the property features an on-site building management and on-site security team to service the needs of providers.



Full-Service Amenities

The on-site pharmacy and in-house dining options support a seamless care experience by giving patients convenient access to care and key amenities in one location.



Referral Potential

The property's sky bridge connection to surrounding medical office buildings creates natural referral pathways and encourages collaborative care across specialties.



Emergency Accessibility

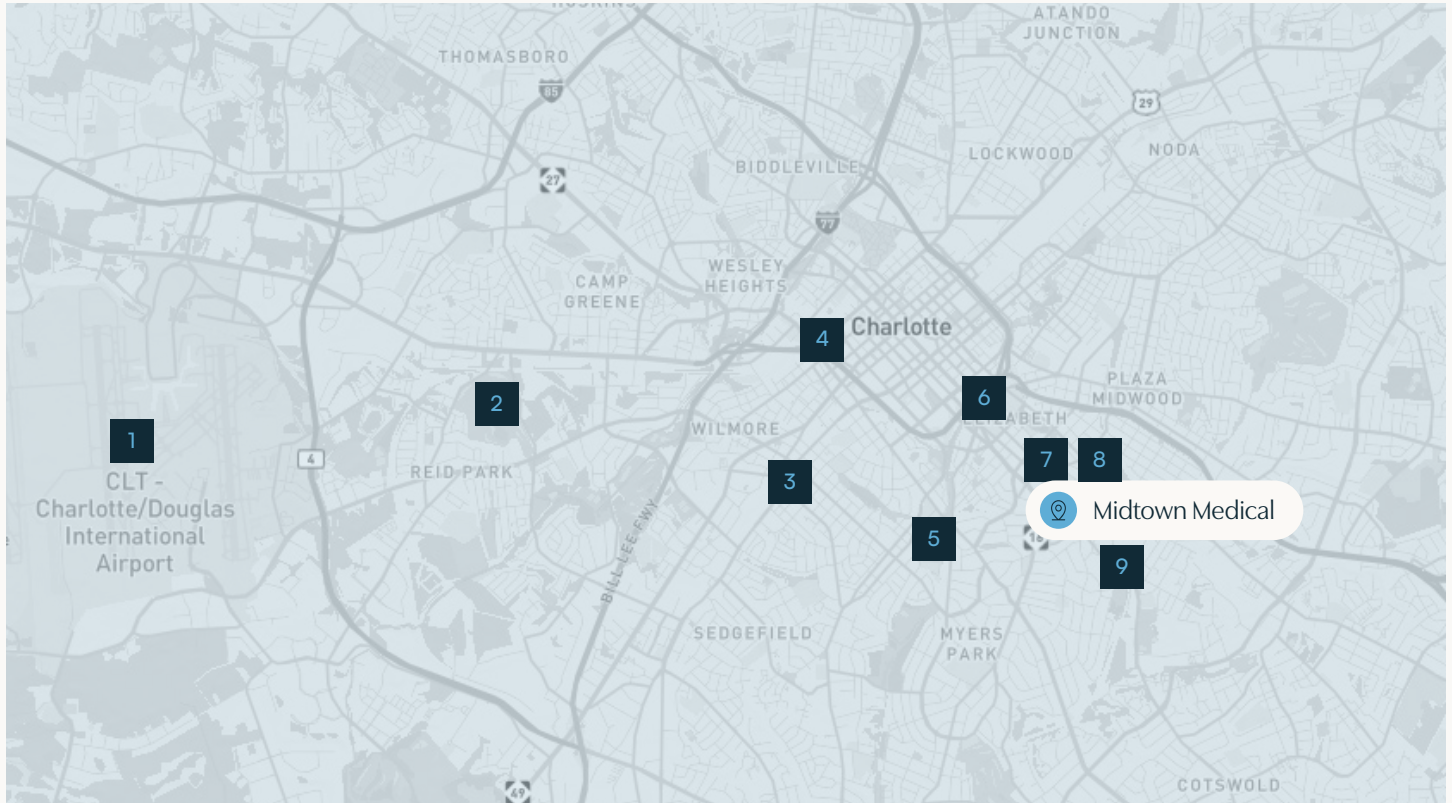
This property allows for seamless care accessibility in critical situations with a gurney-sized elevator and a backup generator for emergency building and parking deck lighting.



Ample Free Parking

An adjoining parking deck is available for both patients and providers, enhancing overall accessibility and improving the flow of daily visits for patients and providers.

Points of Interest



1 Charlotte Douglas Airport
📍 8 miles

2 Carolina Golf Club
📍 6 miles

3 Atherton Mill
📍 3 miles

4 Bank of America Stadium
📍 3 miles

5 Atrium Health Carolinas Medical
📍 1 mile

6 I-277
📍 1 mile

7 Novant Health Presbyterian Medical
📍 0.3 miles

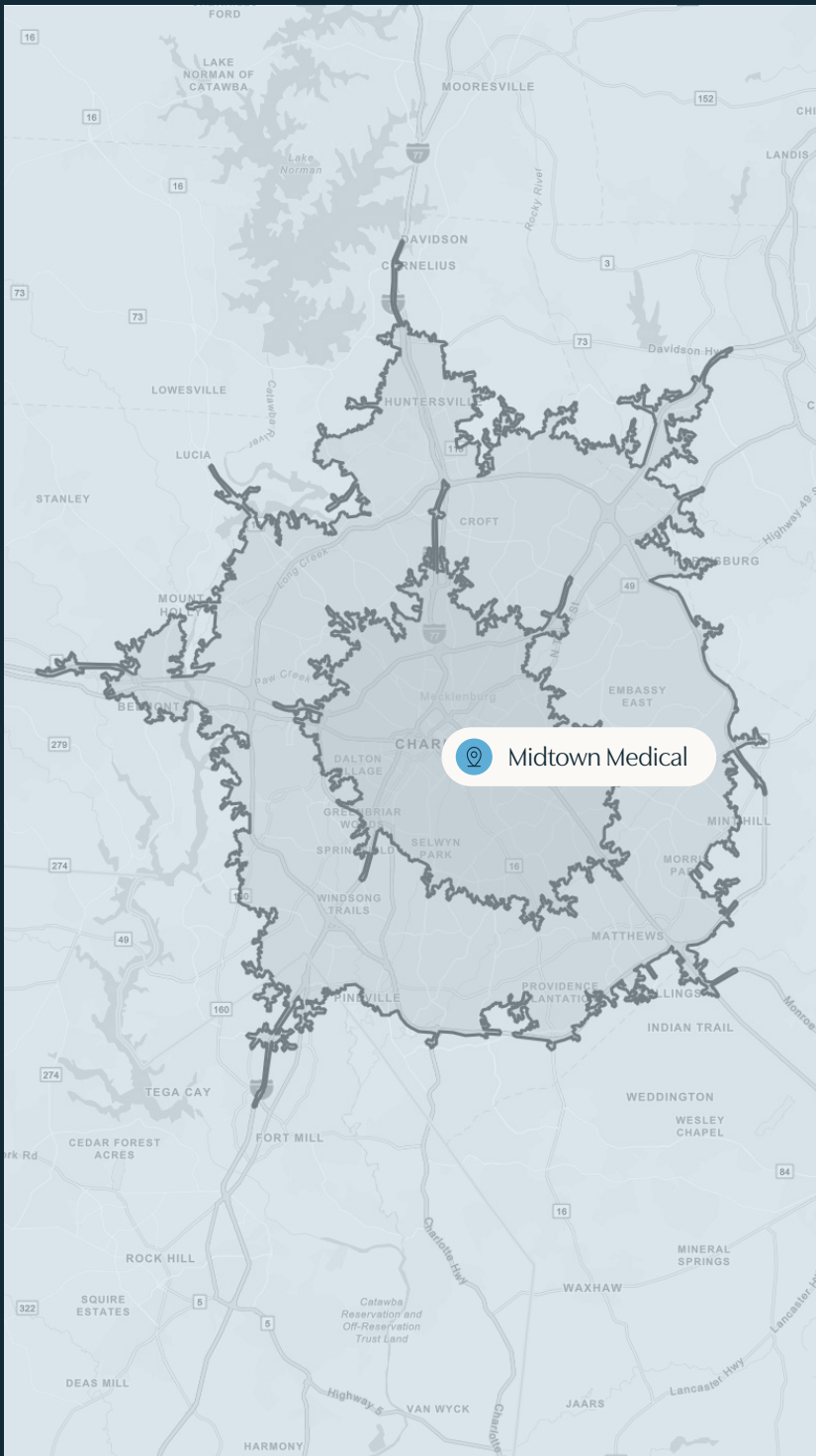
8 Atrium Health Mercy
📍 0.3 miles

9 Eastover Medical Park
📍 1 mile





Notable locations within a 10-minute walk

- Walgreens Pharmacy
- Burger King
- Domino's Pizza
- Viva Chicken
- Bojangles
- PNC Bank
- Papa John's Pizza
- Truist
- Rosemont Restaurant


Demographics



15 Minute Drive Time

-  Population
324,368
-  Median Income
\$82,259
-  Median Age
34.6 years old
-  CAGR
1.59%

25 Minute Drive Time

-  Population
980,489
-  Median Income
\$84,112
-  Median Age
35.3 years old
-  CAGR
1.53%



FLOOR PLAN

Floor Six

Suite 600



Size
12,773 RSF



Availability
Vacant



FLOOR PLAN

Floor Eight

Suite 800



Size
9,647 RSF



Availability
Vacant

Suite 850



Size
4,976 RSF



Availability
Vacant

Suite 870



Size
3,195 RSF

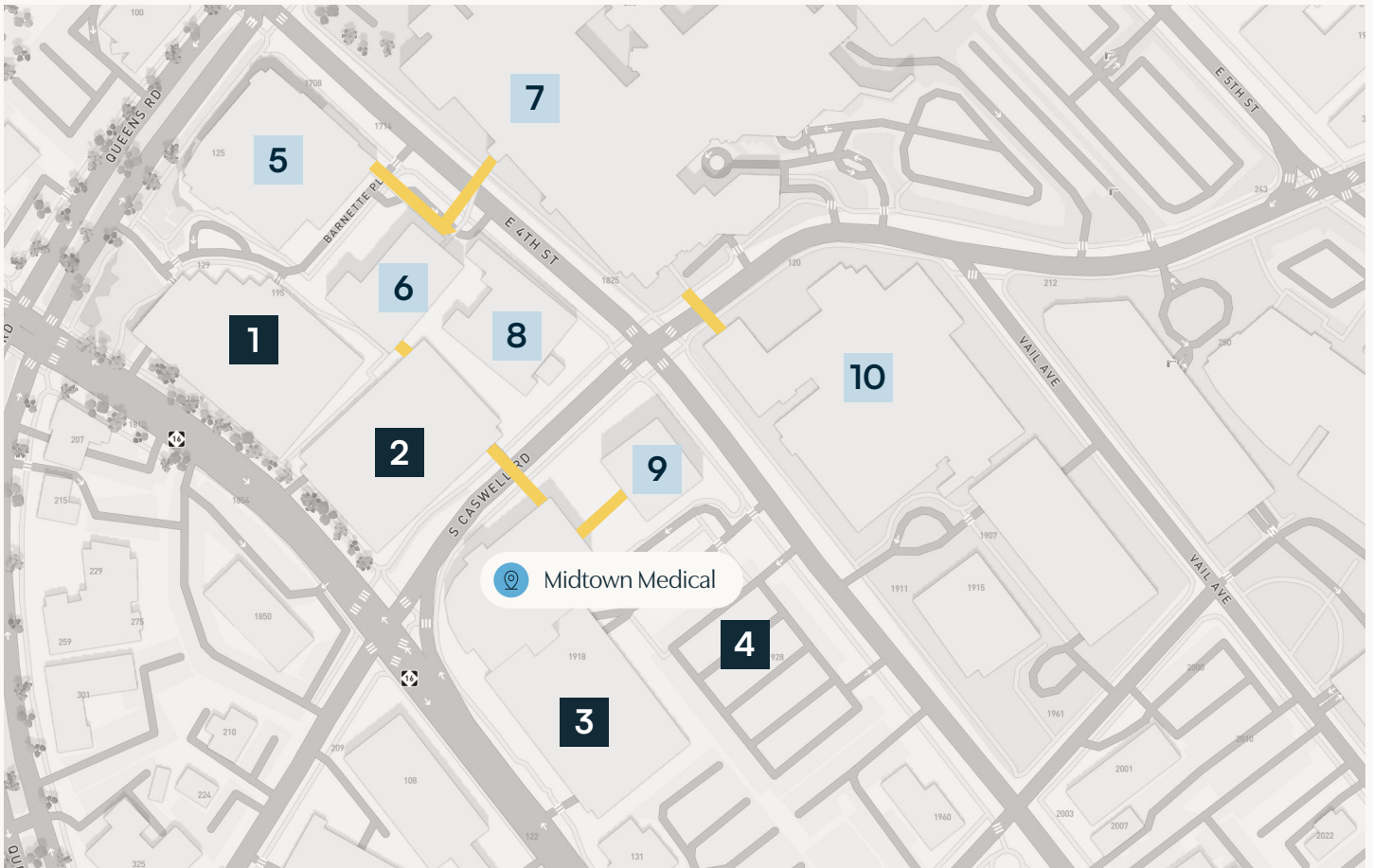


Availability
Vacant

Exterior



Campus Map



Key

 Sky Bridge Connector

Campus Parking

- 1** Novant Heart & Vascular Connected Parking Deck
- 2** Presbyterian Medical Tower Connected Parking Deck
- 3** Midtown Medical Plaza Connected Parking Deck
- 4** Metroview Professional Building Surface Parking

- 5** Novant Heart & Vascular Institute
- 6** Presbyterian Medical Tower
- 7** Novant Health Presbyterian Medical Center
- 8** Novant Health Charlotte Outpatient Surgery Center
- 9** Metroview Professional Building
- 10** Novant Health Charlotte Orthopedic Hospital



Midtown Medical Plaza

1918 Randolph Road
Charlotte, NC 28207

Colin Stewart
Director, Brokerage Services



Phone
(704) 962-1387



Email
colin.stewart@meadowsandohly.com

Meadows & Ohly

Remedy
Medical Properties, Inc.

MEADOWSANDOHLY.COM