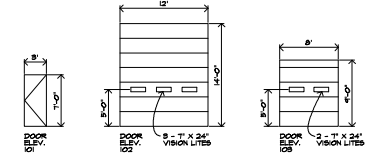


S:\CAD\PROJECTS\INDUSTRIAL BLDG AT NORTH ECHOS, BUILDINGS PLANS, ILLIAD

1/19/2025 10:57 AM

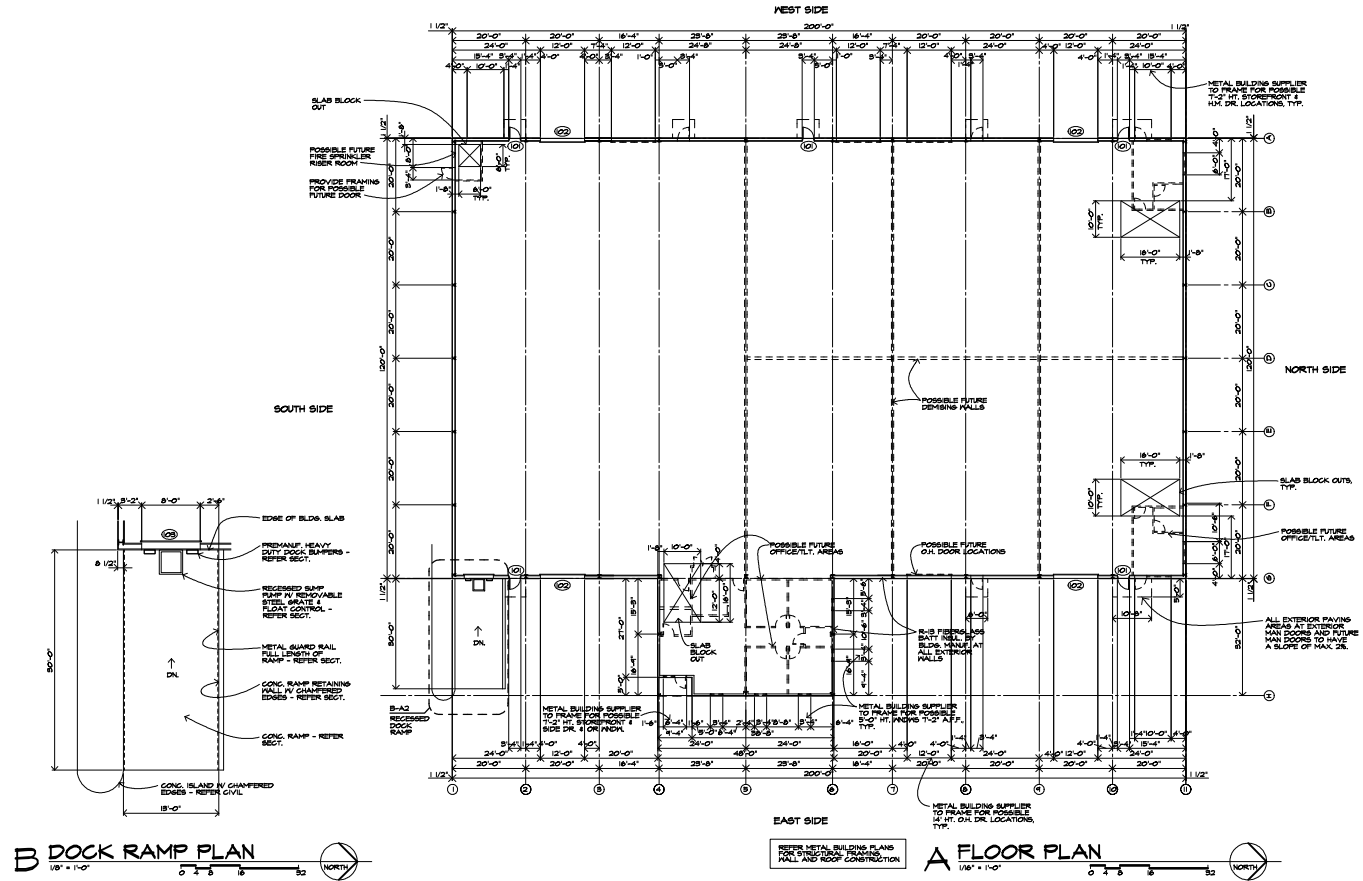


DOOR ELEV.

NO.	SIZE	TYPE	DOOR MAKE	DOOR FINISH	FRAME MATL.	FRAME FINISH	HDRMR.	NOTES
101	8'X7'	FLUSH	INSUL. MTL. - MESA STEEL	PAINT	H.M.	PAINT	I	
102	12'X4'	O.H.	INSUL. MTL. W/ LITES	PREFIN.	H.M.	PAINT	-	NOTE 1
103	8'X7'	O.H.	INSUL. MTL. W/ LITES	PREFIN.	H.M.	PAINT	-	NOTE 2

ALL LOCKSETS TO BE COMMERCIAL GRADE LEVER HANDLE A.D.A. ACCESSIBLE.  
 ALL MAIN DOORS TO HAVE LOCKSETS 100X.  
 H.M. FRAME FINISH TO BE MANUF. STANDARD FINISH - FIELD PAINT TO MATCH BIDDING COLOR.  
 ALL GLAZING IN ALL DOORS TO BE TINTED TEMPERED SAFETY SINGLE GLAZING.  
 HARDWARE 1 - OFFICE LOCKSET IN LEVER OPERATED OPERATOR'S & GLAZING - BRONZE FINISH.  
 CONT. PLANO TYPE HEAVY DUTY HINGES - BRONZE FINISH.  
 NOTE 1 - INSUL. H-LIFT 1 PANEL DR. W/ 8' - 12'X24" VISION LITES & INTERIOR DEADBOLT LOCK.  
 FULL GRAB OPENER IN EAST CORNER TO AUTOMATIC.  
 NOTE 2 - INSUL. H-LIFT 4 1/2 PANEL DR. W/ 2 - 12'X24" VISION LITES & DEADBOLT LOCK.  
 W/ AUTOMATIC OPENER.

**CONSTRUCTION & FINISH NOTES**  
 ALL WORK & MATERIALS TO MEET ALL APPLICABLE CODES.  
 ALL FLOORS TO BE SEALED CONC. UNO.



**B DOCK RAMP PLAN**  
 1/8" = 1'-0"  
 NORTH

**A FLOOR PLAN**  
 1/8" = 1'-0"  
 NORTH

REVISIONS

**PROJECT:** N 75 Business Park  
 A Warehouse at N 56th & Hwy 75  
**LOCATION:** NE OF N 56TH & HWY 75, TULSA COUNTY, OKLA.  
**CLIENT:** N 75, L.L.C.

SEAL:



**WORD OF COPYRIGHT**  
 THESE PLANS ARE COPYRIGHTED AND ARE SUBJECT TO OREGON REGISTERED AS AN ARCHITECTURAL WORK UNDER SECTION 102 OF THE COPYRIGHT ACT. IT IS ILLEGAL TO REPRODUCE THESE PLANS OR ANY PART OF THEM. THE PROTECTION INCLUDES BUT IS NOT LIMITED TO REPRODUCTION, PHOTOCOPYING, SCANNING, OR ANY INFORMATION SYSTEMS. ANY UNAUTHORIZED REPRODUCTION OR TRANSMISSION OF THESE PLANS, IN ANY FORM OR BY ANY MEANS, WITHOUT THE WRITTEN PERMISSION OF ARCHITECTS COLLECTIVE, IS STRICTLY PROHIBITED. CONTACT ARCHITECTS COLLECTIVE FOR PERMISSION TO REPRODUCE OR TRANSMIT THESE PLANS.



**PROJECT NUMBER:** JAN. 14, 2025

**SHEET TITLE:** BLDG. FLOOR PLAN

**SHEET NUMBER:** A2