

For Sale

Commercial Land 2.9 ACRES WITH FRONTAGE ON US1 US1 DATIL PEPPER ROAD, Saint Augustine, Florida 32086



SALE PRICE: \$300,000.00

PROPERTY DESCRIPTION:

2.90 ACRES

462.95 FT. OF FRONTAGE ON US 1

Hard Corner US 1 and Datil Pepper Road

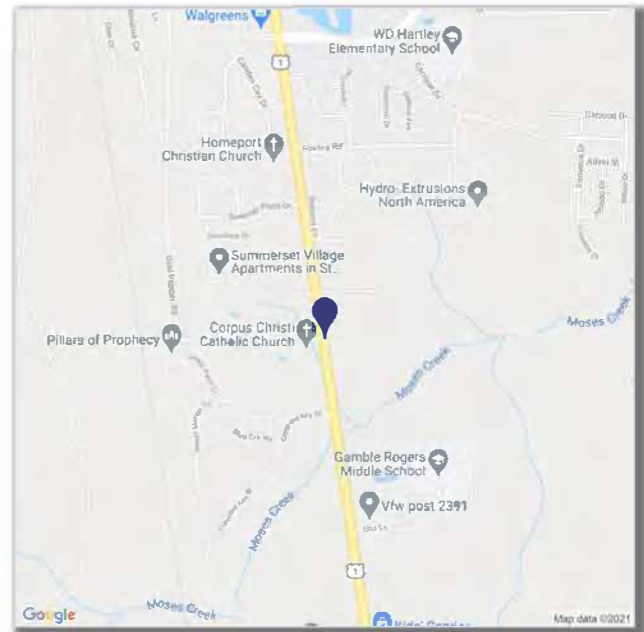
Future Land Use: Mixed Use District -allows a wide variety of uses

Current Zoning: Open Rural

Property Location:

PROPERTY IS LOCATED ON THE NORTH WEST CORNER OF DATIL PEPPER ROAD AND US 1 , SOUTH OF WILDWOOD DRIVE AND NORTH OF CR 206.

Emerging market in Saint Johns County Easy connection to Interstate 95 via US Highway 1 at State Road 206 or Wildwood Drive to State Road 207 to Interstate 95



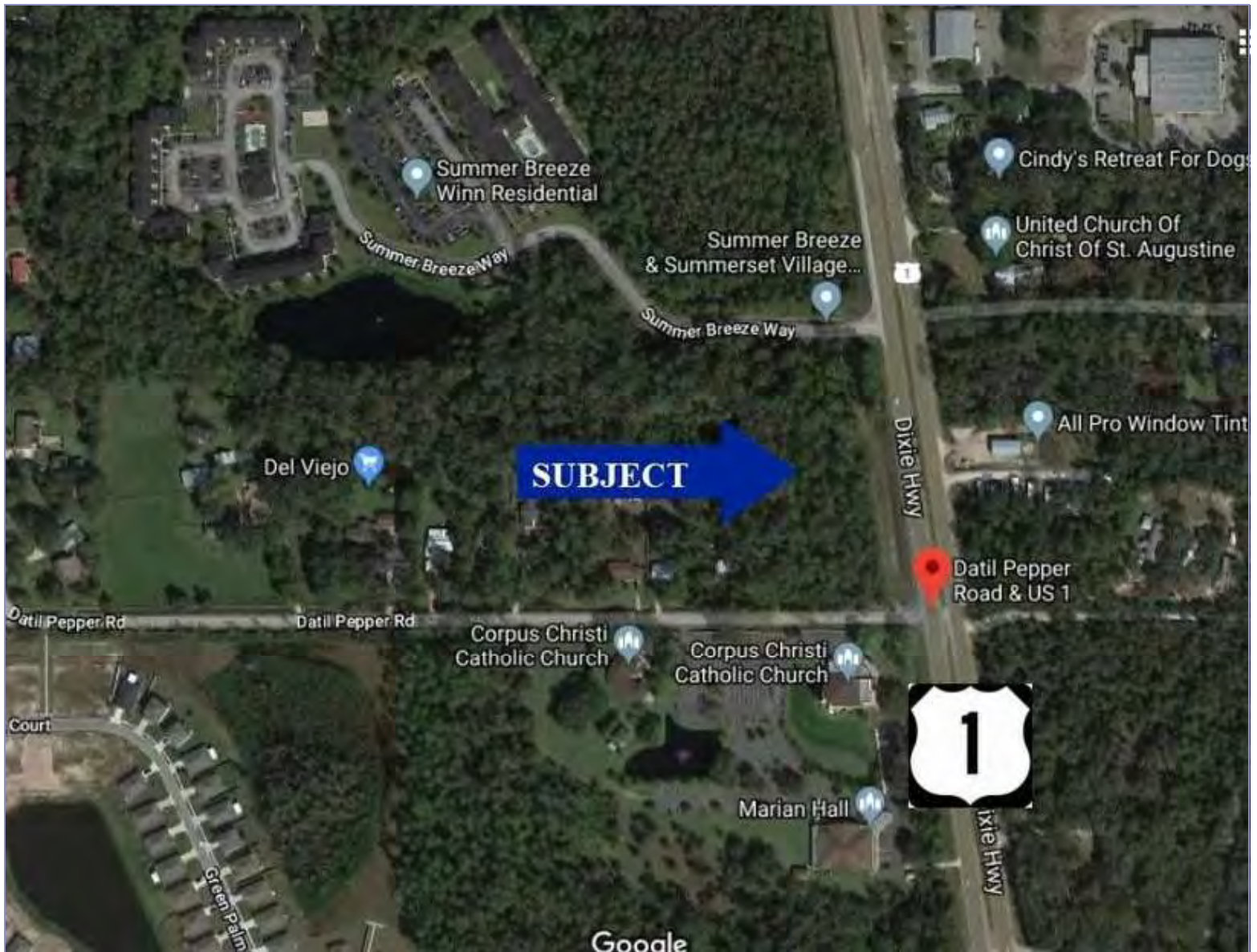
St Johns County Property Appraiser's
ID: 1832100-0070

Linda Daniels
& Associates, LLC

Linda Daniels
Broker-Principal
(904) 304-7222
ldaniels@lindadaniels.com

For Sale

Commercial Land 2.9 ACRES WITH FRONTAGE ON US1 US1 DATIL PEPPER ROAD, Saint Augustine, Florida 32086



LAND DETAILS:

Parcel ID: LID: 2020-34

Market: SAINT JOHNS COUNTY

Submarket:

Lot Size: 2.9 Acres

Zoning: Open Rural and Future Land Use- Mixed Use

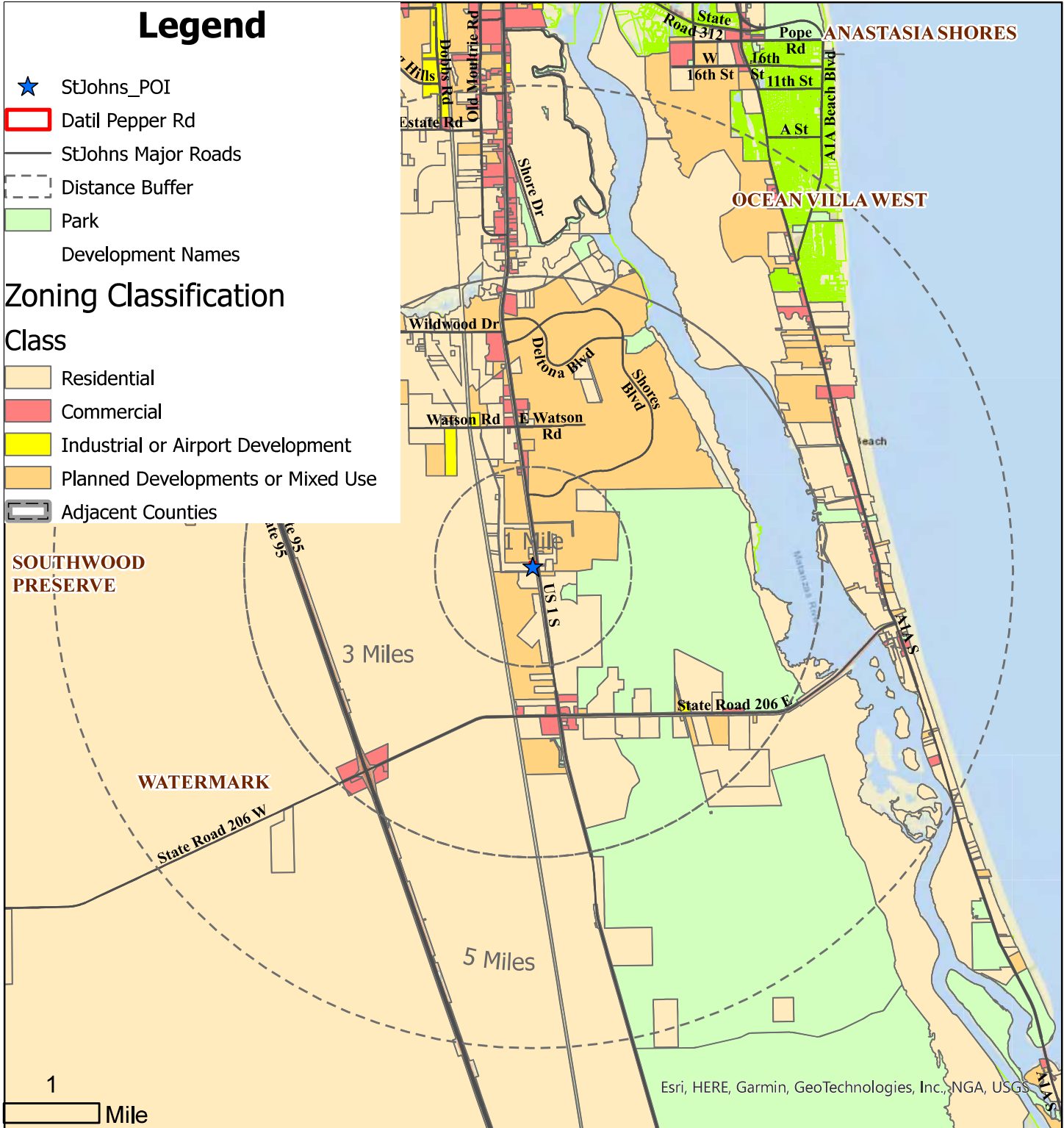
District

Linda Daniels
& Associates, LLC

Linda Daniels
Broker-Principal
(904) 304-7222
ldaniels@lindadaniels.com

The information contained herein has been obtained from sources believed reliable. No warranty, representation, expressed or implied is made as to its accuracy, and same is submitted subject to errors, omissions, change of price, rental or other conditions, withdrawal without notice, and to any special listing conditions, imposed by our principals. The value and suitability of this transaction to you depends on tax, market and other factors which you should determine with the assistance of your tax, financial and legal advisors.

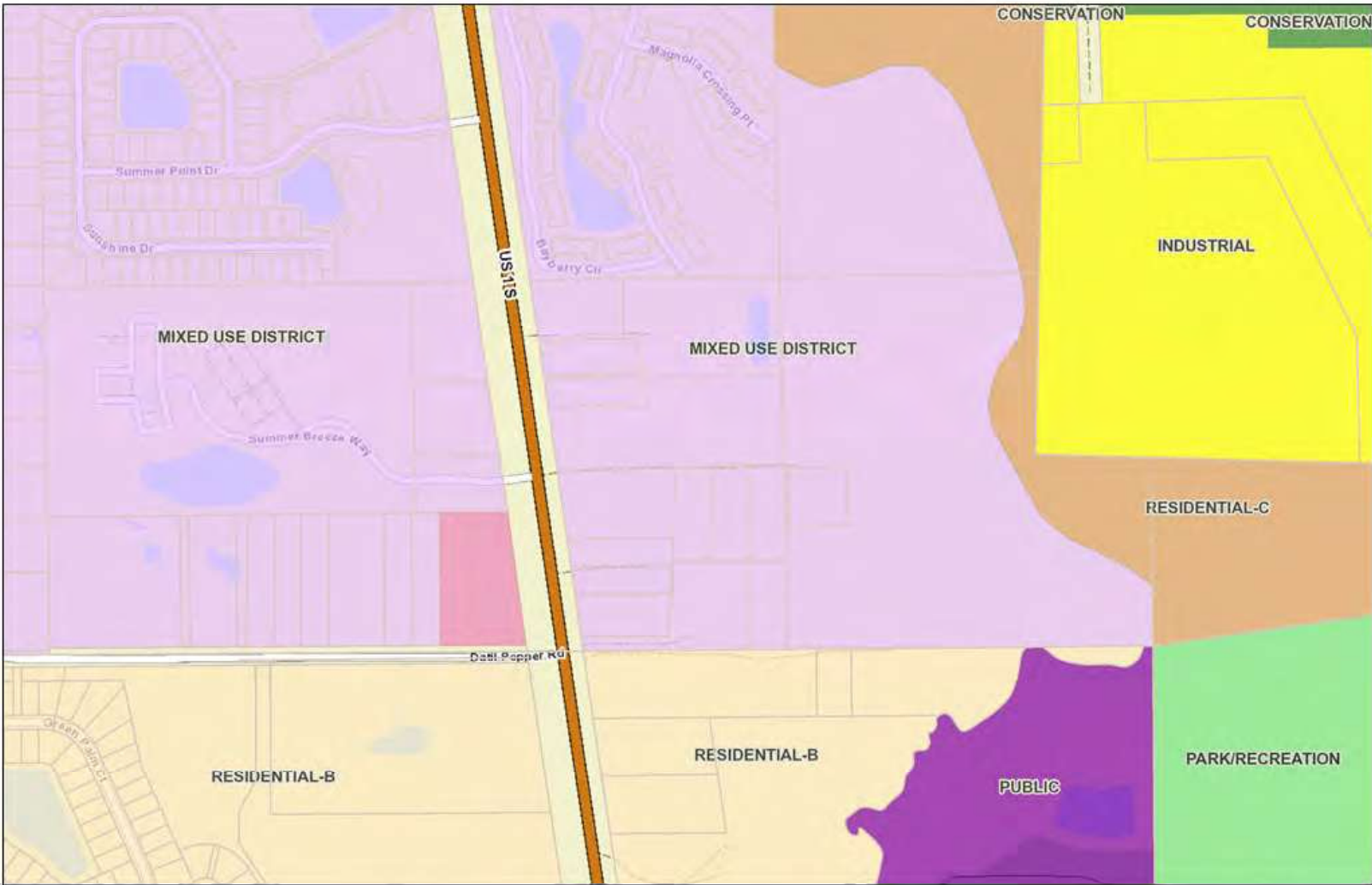
Datil Pepper Road- St. Johns, Florida High Growth Corridor-Development Map



Measurements are based on GIS distances in US feet which are not survey quality.

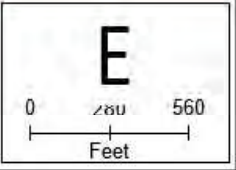
The information contained herein has been obtained from sources believed reliable. No warranty, representation, expressed or implied is made as to its accuracy, and same is submitted subject to errors, omissions, change of price, rental or other conditions, withdrawal without notice, and to any special listing conditions, imposed by our principals. The value and suitability of this transaction to you depends on tax, market and other factors which you should determine with the assistance of your tax, financial and legal advisors.

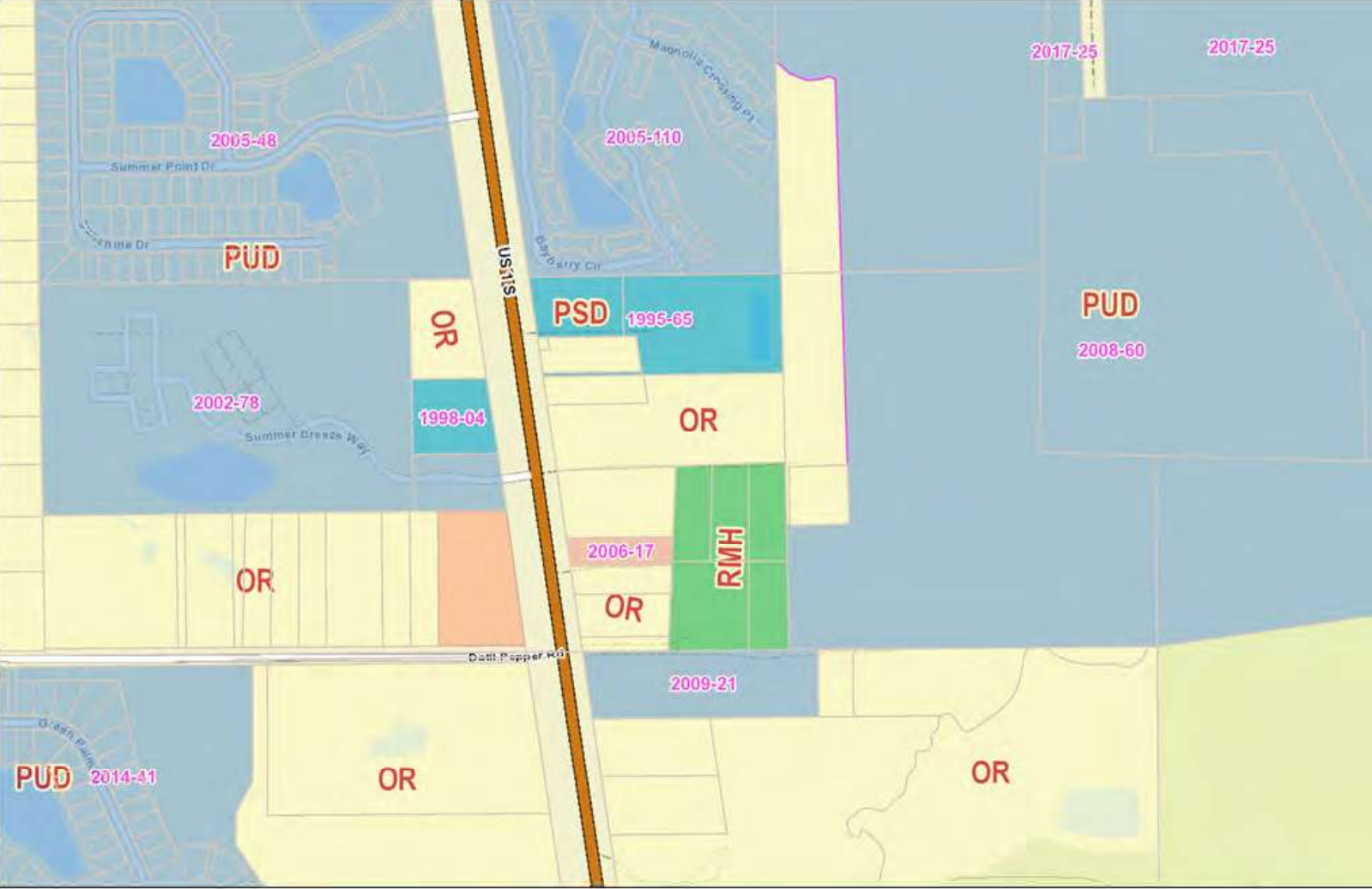
Created by Obsidian Services, Feb. 2022; Data source: Linda Daniels & Associates LLC; St Johns County GIS; St Johns County Property Appraiser



Map provided by St. Johns County GIS
DISCLAIMER:
 This map is for reference use only. Data provided was derived from various sources with varying levels of accuracy. The St. Johns County GIS Division disclaims all responsibility for the accuracy or completeness of the data shown herein.
 Date: 1/6/2019

Datil Pepper Future Land Use





Map created with St. Johns County's [Map](#)

DISCLAIMER:
 This map is for reference use only. Data provided are derived from multiple sources with varying levels of accuracy. The St. Johns County GIS Division assumes no responsibility for the accuracy or completeness of the data shown herein.

Date: 1/5/2015

Datil Pepper Zoning Map

