

AVAILABLE



FOR LEASE

- ✓ ± 1,372 Total Square Feet Available
- ✓ Zoned Tooele City GC Commercial
- ✓ Large Open Main Work Area
- ✓ Private Office
- ✓ Space on Complex Marquee Sign
- ✓ Busy Downtown Tooele Corner
- ✓ 33,000 Average Daily Traffic Count
- ✓ Close to Freeway & Major Roads
- ✓ MLS #2138885



\$1,250.00/NNN

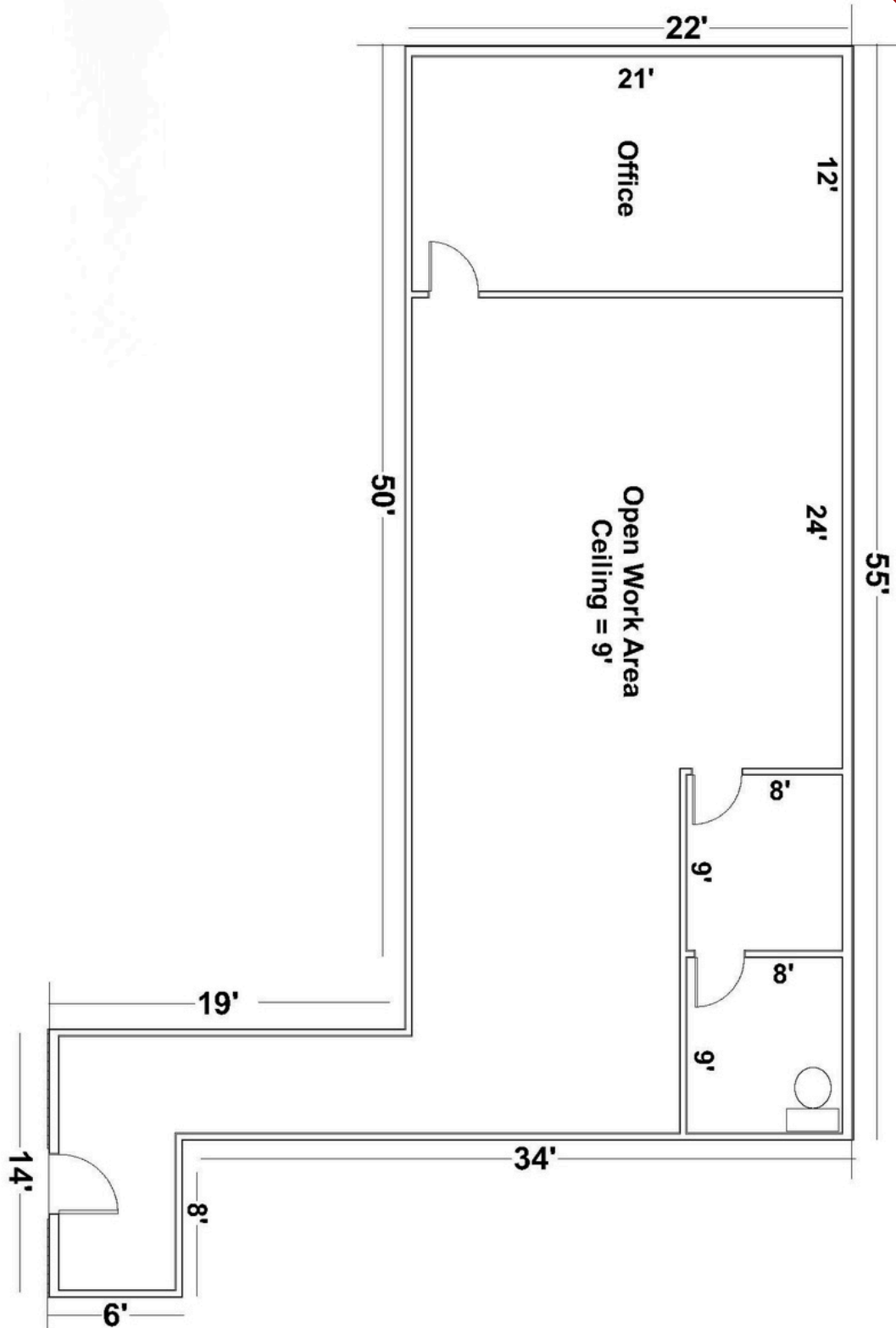
**510 N Main Street
Tooele, UT 84074**

CREST
REALTY

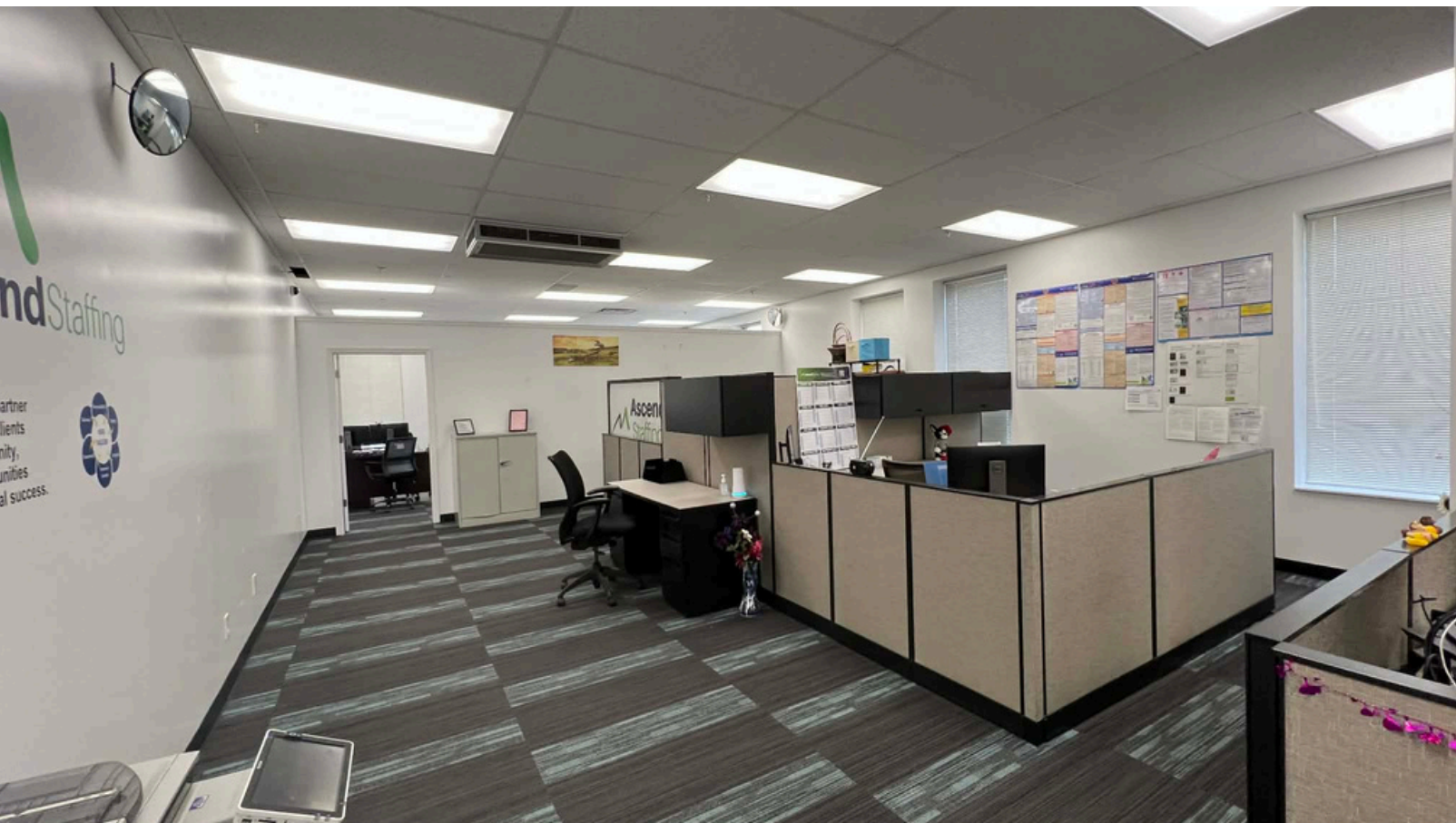
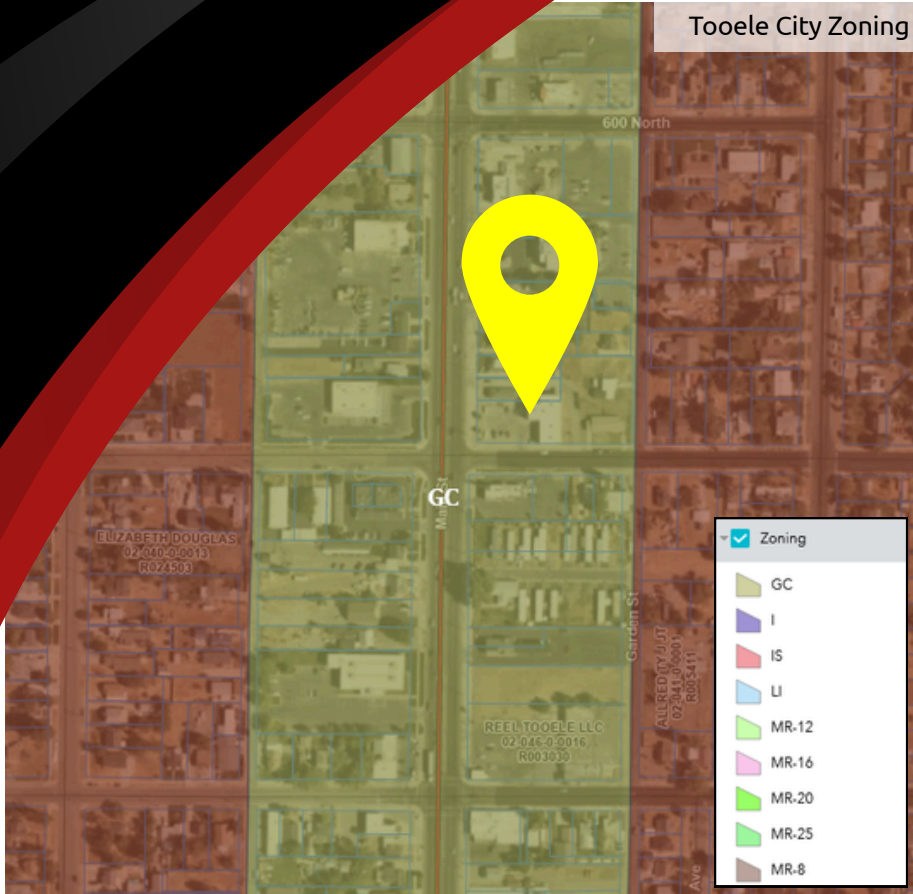
Floor Plan



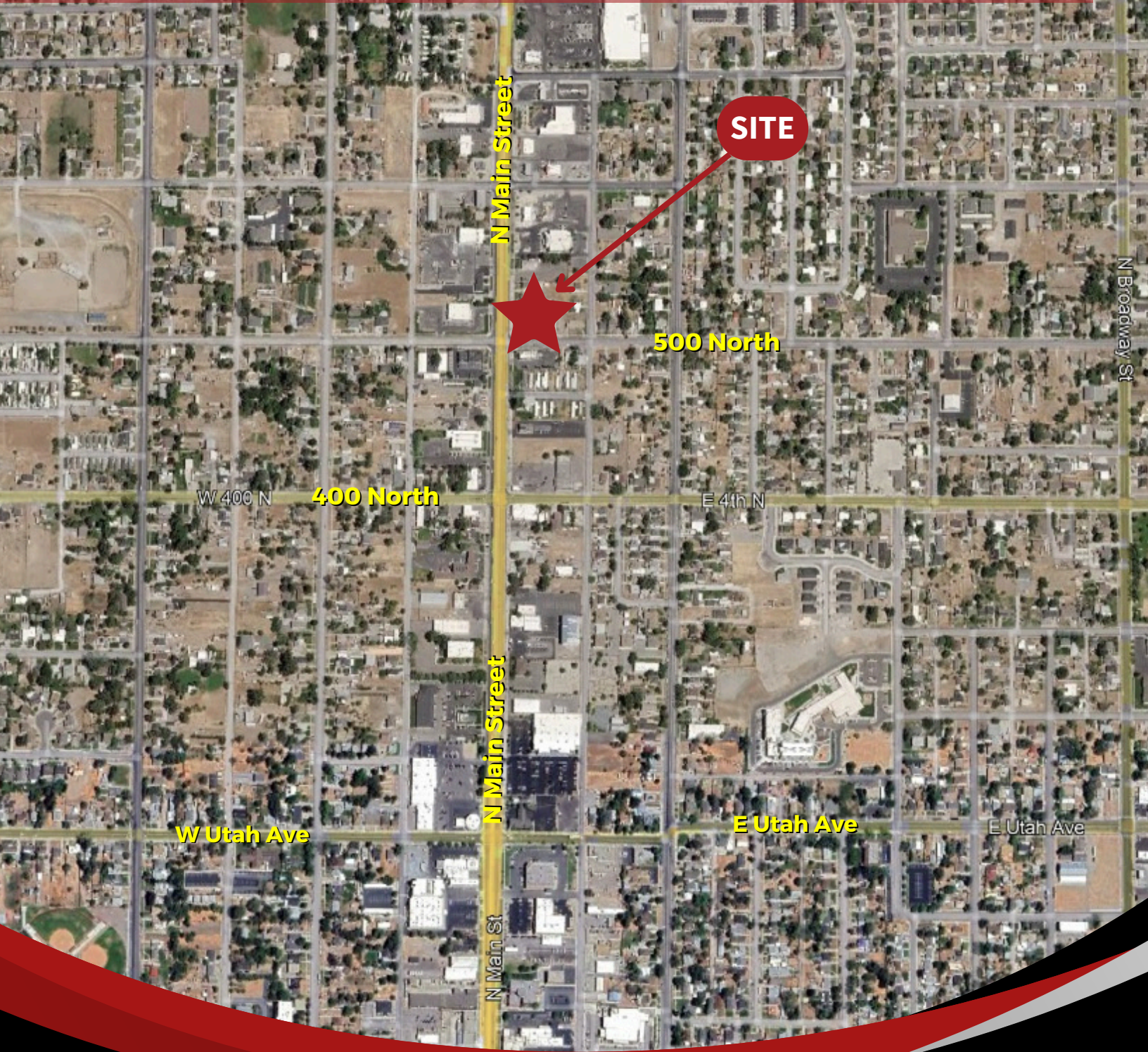
Total = 1,372 Sq Ft



Tooele City Zoning



510 N MAIN ST TOOELE, UT 84074



Aaron McCrady

801-953-7012
aaroncrest@gmail.com



Garrett Pierson

801-644-1361
g@crestutah.com





Contact Us



Aaron McCrady

801-953-7012

aaroncrest@gmail.com



Garrett Pierson

801-644-1361

g@crestutah.com



www.crestutah.com

968 Chambers St #2,

South Ogden UT 84403

801-476-9500

