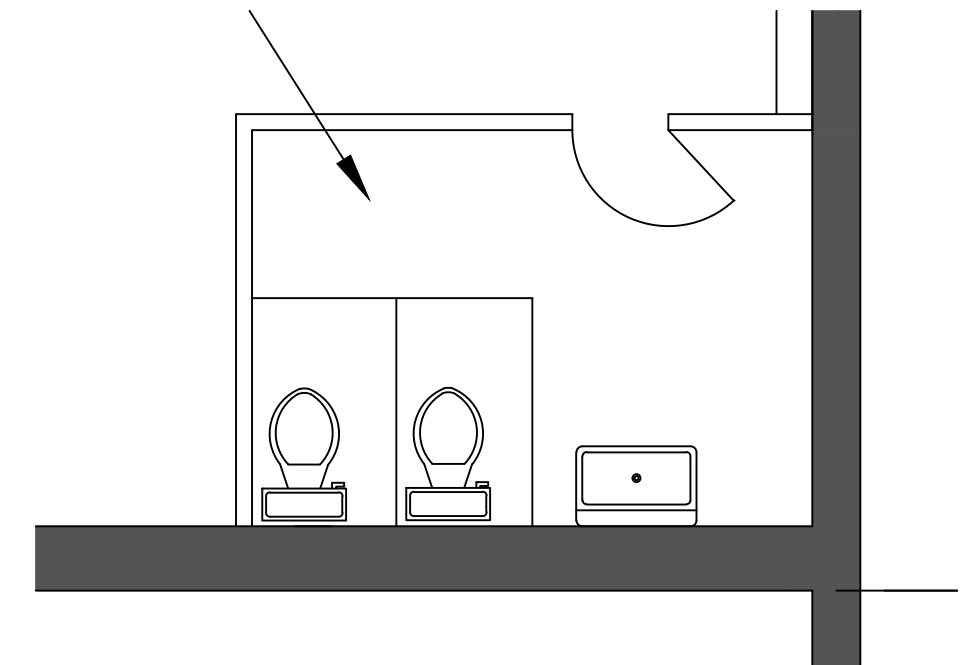
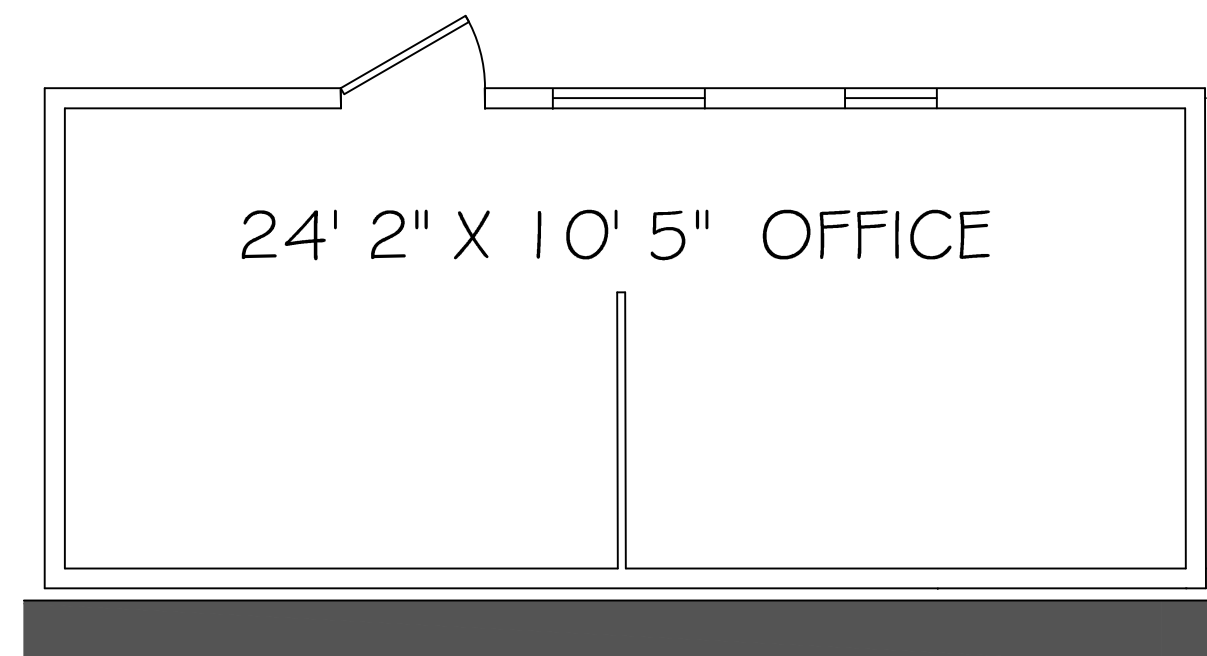


FLOOR PLAN of SECTION 2 1/16" = 1'0"



DETAIL OF BATH 1/4" = 1'0"



DETAIL of OFFICE 1/4" = 1'0"

NOTE: THIS DRAWING IS AVAILABLE TO TENANTS AT 1/8" = 1'0", IN AUTOCAD, TO AID IN REMODELING

FORBES INDUSTRIAL PARK - BLDG. 2703 7215 SW TOPEKA BLVD., PAULINE, KANSAS 66619	
FLOOR PLAN of SECTION 2	SCALE: 1/16" = 1'-0"
DATE DRAWN: 11/01/2014	DRAWN: RWS