



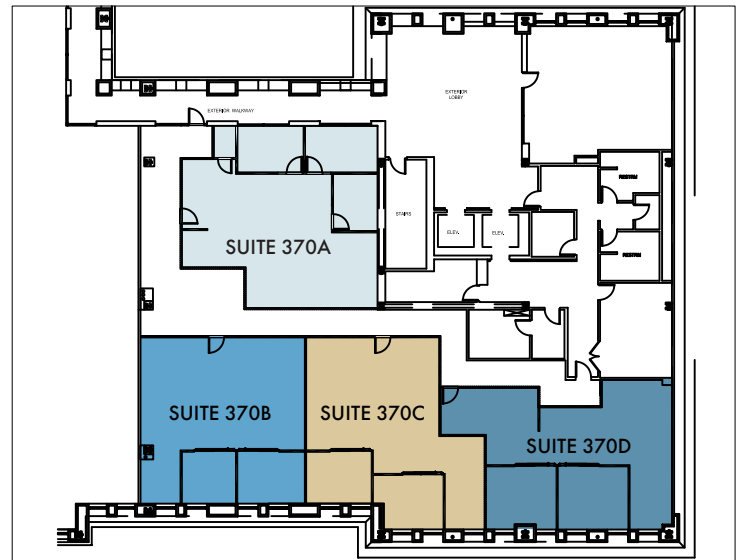
FOR LEASE | 949 Kamokila Boulevard · Kapolei, HI 96707

# Hale O Kapolei

## READY TO OCCUPY SUITES

Base Rent	\$2.85 - \$2.95/SF
Operating Exp.	\$2.19/RSF/MO
Parking Ratio	3 stalls: 1000 RSF

Bankoh Hale O Kapolei offers beautifully designed, plug-and-play suites that are custom-ready and available for immediate occupancy. This well-maintained, four-story Class A office building features 240,000 square feet of premium space, enhanced by lush landscaping, a campus-style courtyard, and outdoor seating areas. Located on Kamokila Boulevard in the heart of Kapolei, the property provides ample tenant and visitor parking, with convenient access to shops, restaurants, and the H-1 freeway.



NOT FOR CONSTRUCTION, DIMENSIONS SHOWN ARE APPROXIMATE

### Available Spaces

Suite 370A	1,439 RSF
Suite 370B	1,250 RSF
Suite 370C	1,278 RSF
Suite 370D	1,261 RSF



**SEAN TADAKI (PB) CCIM**  
Managing Partner · RB-21112  
(808) 779-9699  
stadaki@caahawaii.com

CAAHAWAII.COM • 225 QUEEN STREET, SUITE 200 • HONOLULU, HI 96813 • @WHEREHAWAIIWORKS  
©2025 Commercial Asset Advisors. All information contained herein is obtained from sources deemed reliable. However, no representations or guarantees are made as to the accuracy thereof, and it is provided herein subject to errors, omissions, changes and withdrawals without notice. Offeror and/or his agent should confirm this information prior to making any offer. Buyer agrees that all negotiation shall be conducted through CAA only. No subagency is offered or intended.