



Unique Office Building Near Hwy 190 with Monument Signage

200 Greenleaves Blvd, Mandeville, LA 70448

Offered For Sale or Lease

Fabian H.C. Edwards, JD/DCL
985-974-8301
fedwards@elifinrealty.com



Property Summary

Fabian H.C. Edwards, JD/DCL
985-974-8301
fedwards@elifinrealty.com



Sale Price

\$2,300,000

Square Footage

\$18 PSF

- **Now available for sale or lease**, 200 Greenleaves Blvd is a multi-tenant office property located in Mandeville, LA.
- Currently 55% occupied, this property offers potential for both investment and business use.
- Designed to maximize natural light, the property has a unique architectural layout and includes visible monument signage.
- Ample off-street parking is available for tenants and visitors.
- Located near N Causeway Blvd and Hwy 190, the site offers excellent accessibility and is surrounded by nearby retail and dining amenities.



Interior Photos

Fabian H.C. Edwards, JD/DCL
985-974-8301
fedwards@elifinrealty.com



200 Greenleaves Blvd, Mandeville, LA 70448

Broker of Record, Mathew Laborde; Licensed by the Louisiana Real Estate Commission and the Mississippi Real Estate Commission. This information has been secured from sources we believe to be reliable, but we make no representations or warranties, expressed or implied, as to the accuracy of the information. References to square footage or age are approximate. Buyer must verify the information and bears all risk for any inaccuracies.

Interior Photos

Fabian H.C. Edwards, JD/DCL
985-974-8301
fedwards@elifinrealty.com



200 Greenleaves Blvd, Mandeville, LA 70448

Broker of Record, Mathew Laborde; Licensed by the Louisiana Real Estate Commission and the Mississippi Real Estate Commission. This information has been secured from sources we believe to be reliable, but we make no representations or warranties, expressed or implied, as to the accuracy of the information. References to square footage or age are approximate. Buyer must verify the information and bears all risk for any inaccuracies.

Interior Photos

Fabian H.C. Edwards, JD/DCL
985-974-8301
fedwards@elifinrealty.com



Interior Photos

Fabian H.C. Edwards, JD/DCL
985-974-8301
fedwards@elifinrealty.com



200 Greenleaves Blvd, Mandeville, LA 70448

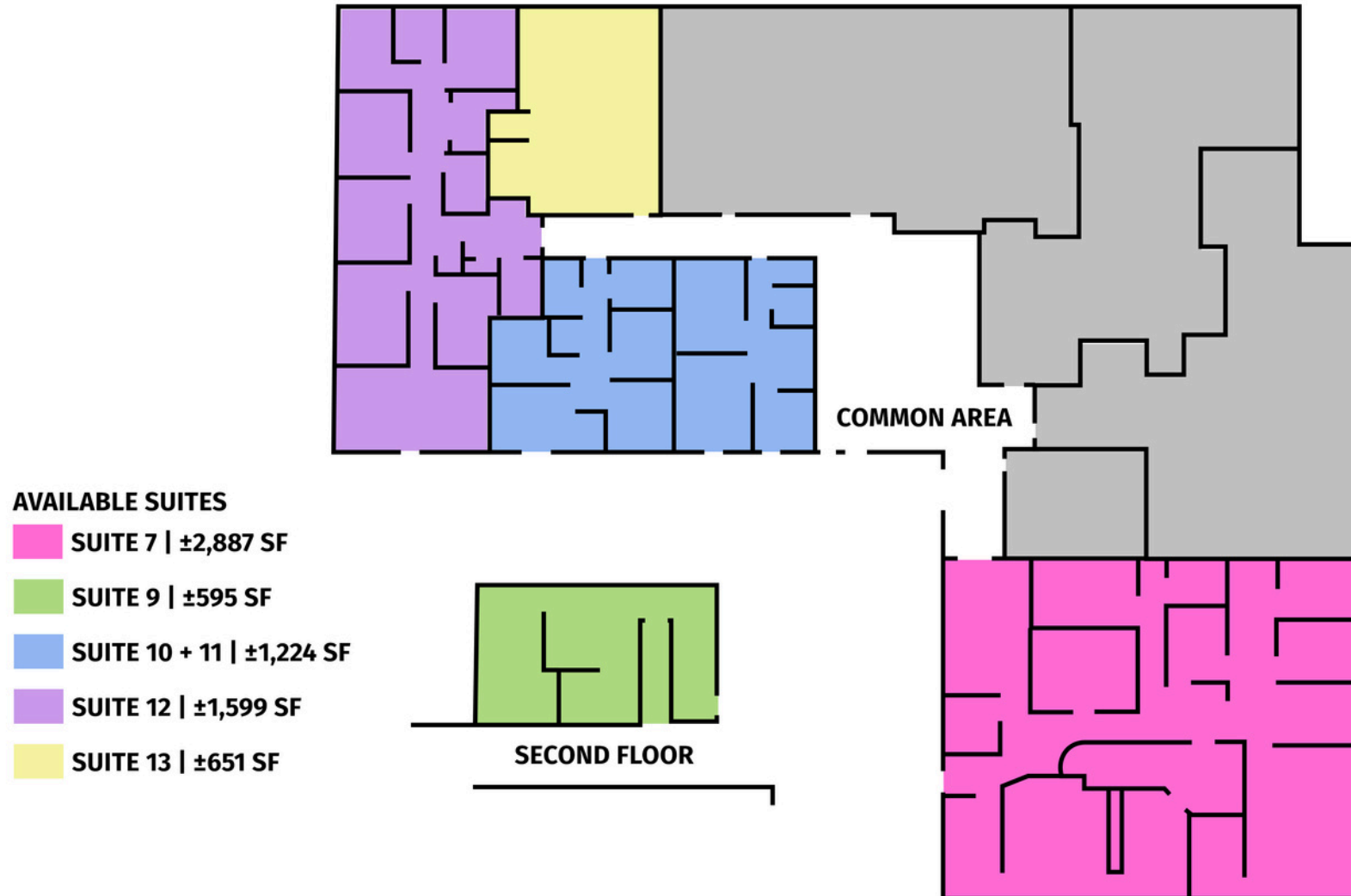
Broker of Record, Mathew Laborde; Licensed by the Louisiana Real Estate Commission and the Mississippi Real Estate Commission. This information has been secured from sources we believe to be reliable, but we make no representations or warranties, expressed or implied, as to the accuracy of the information. References to square footage or age are approximate. Buyer must verify the information and bears all risk for any inaccuracies.





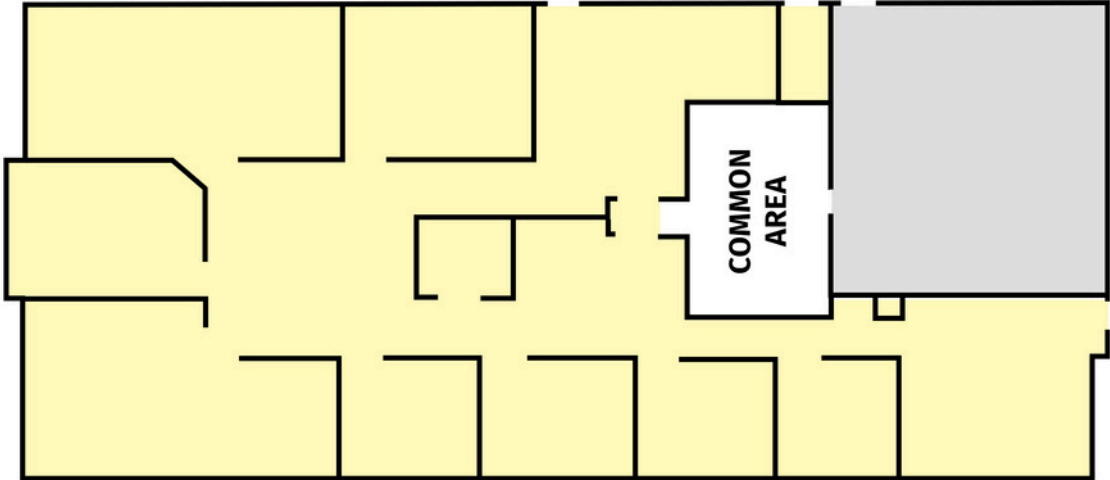
Floor Plan – Building A

Fabian H.C. Edwards, JD/DCL
985-974-8301
fedwards@elifinrealty.com



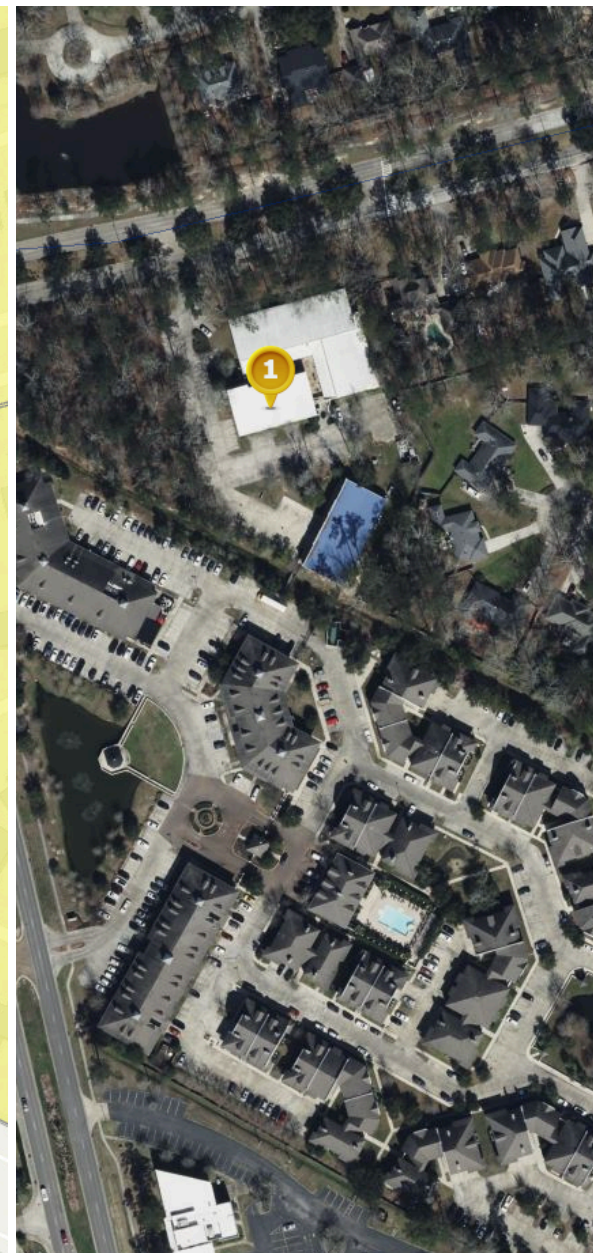
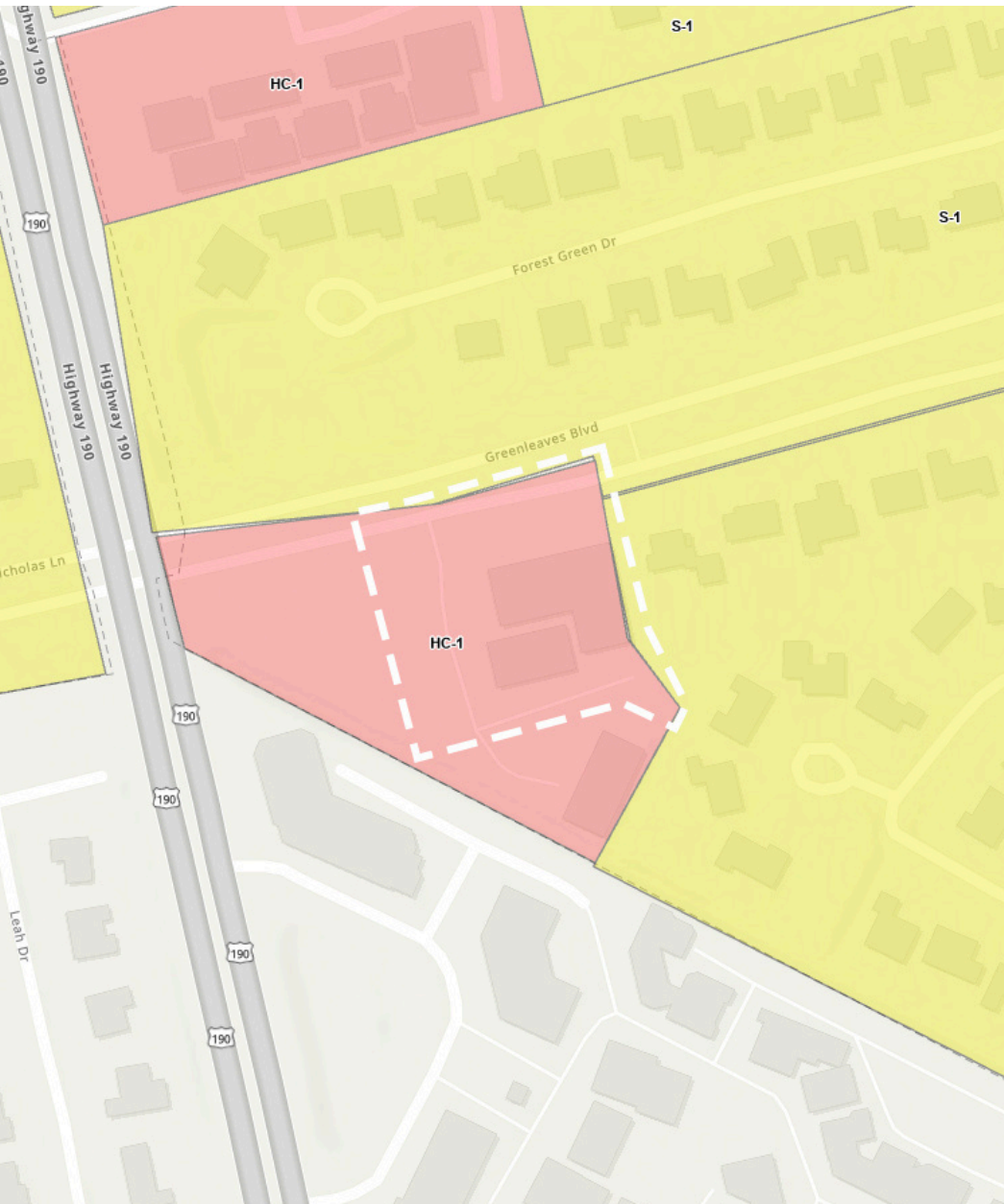
Floor Plan – Building B

Fabian H.C. Edwards, JD/DCL
985-974-8301
fedwards@elifinrealty.com



AVAILABLE SUITES

 **SUITE 1 | ±3,622 SF**



Points

Flood Insurance Study Text

Pt. 1 (30.3773, -90.0756)

Community: St. Tammany Parish*

Preliminary FIRM (Issued: 04/30/2008)
Flood Zone: X
FIRM Panel ID: 22103C0314F
Preliminary FIRM Panel Date: 04/30/2008

Effective FIRM (Effective: Varies)
Flood Zone: AREA NOT INCLUDED
FIRM Panel ID: 2202020314D
FIRM Panel Date: 5/16/2012

Ground Elevation¹: 15.4 ft

[Community Info](#) [What Does This Mean?](#)

[Clear Points](#)

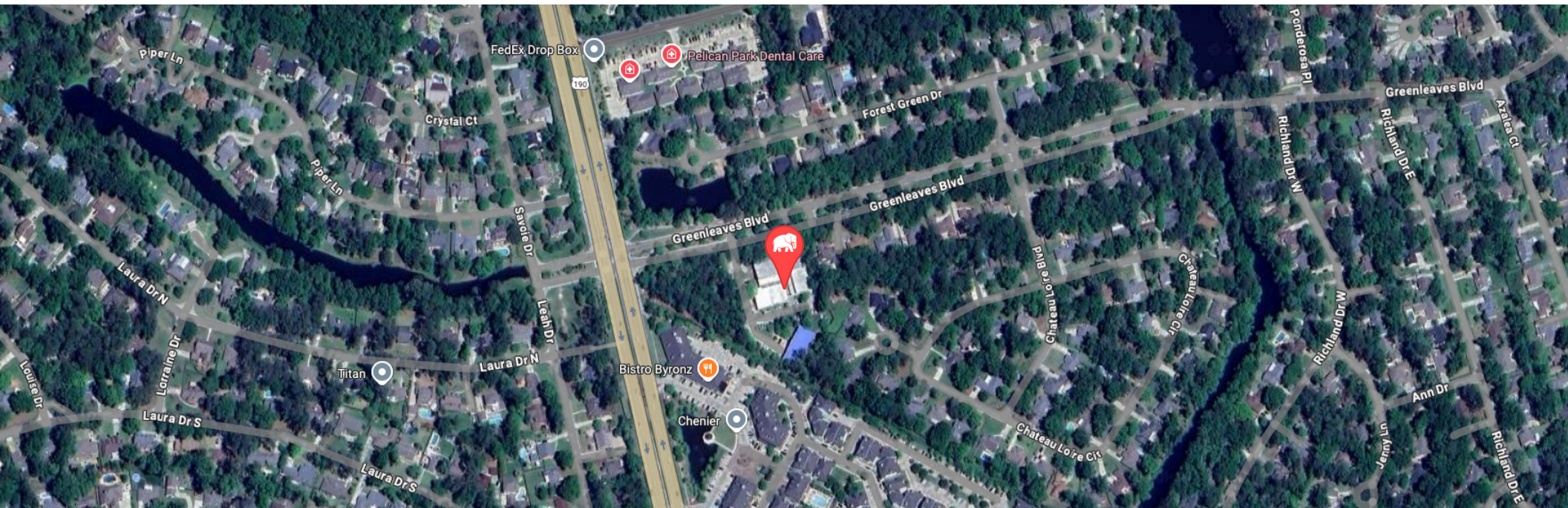
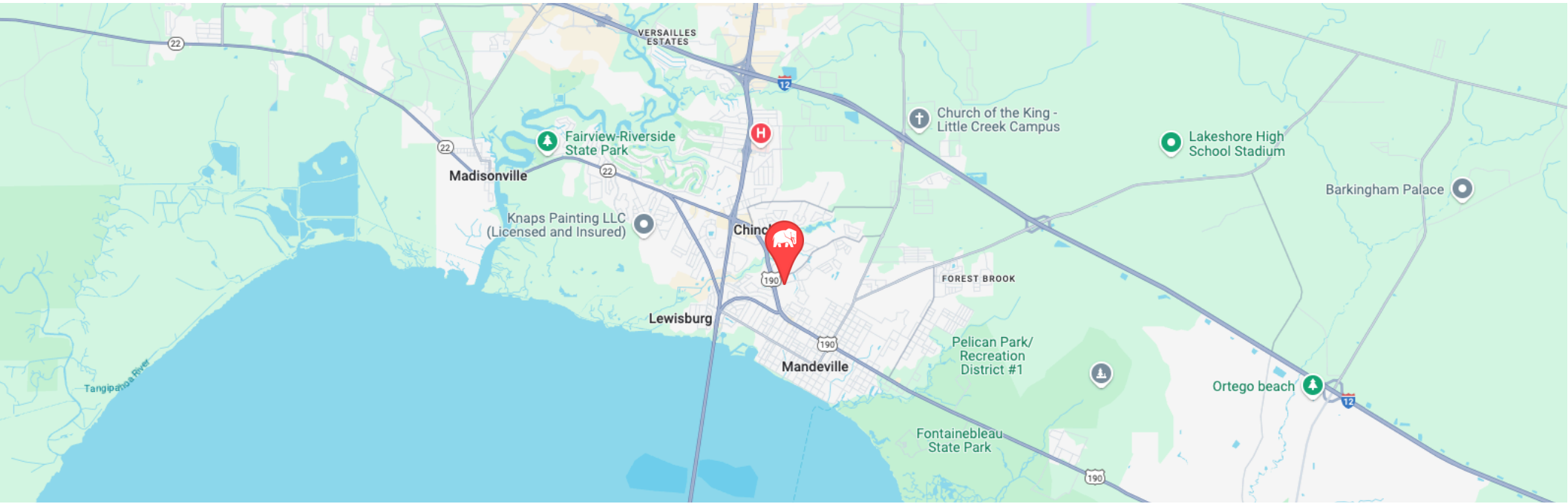
DOTD 511

HC-1 (HIGHWAY COMMERCIAL)

FLOOD ZONE X

Location Maps

Fabian H.C. Edwards, JD/DCL
985-974-8301
fedwards@elifinrealty.com



200 Greenleaves Blvd, Mandeville, LA 70448

Broker of Record, Mathew Laborde; Licensed by the Louisiana Real Estate Commission and the Mississippi Real Estate Commission. This information has been secured from sources we believe to be reliable, but we make no representations or warranties, expressed or implied, as to the accuracy of the information. References to square footage or age are approximate. Buyer must verify the information and bears all risk for any inaccuracies.

Broker Contact

Fabian H.C. Edwards, JD/DCL
985-974-8301
fedwards@elifinrealty.com



Fabian H.C. Edwards, JD/DCL

Vice President - Office Sales & Leasing

fedwards@elifinrealty.com

Direct: 985-974-8301

Office: 800-890-9329



Greater Baton Rouge, LA

640 Main St, Suite A
Baton Rouge, LA 70801

Greater New Orleans, LA

3340 Severn Ave, Suite 115
Metairie, LA 70002

Greater Lafayette, LA

606 Lee Ave
Lafayette, LA 70501

