

FOR LEASE



GOODMAN OAKS CENTRE

6253 GOODMAN ROAD • OLIVE BRANCH, MS 38654

SUMMARY

Building size: 3,800 +/- SF

Lot Size: 0.56 +/- Acres

Parking: Asphalt

Zoning: C-1



RHODES THOMPSON
Commercial Agent
(662) 892-4000
rhodesthompson@outlook.com
Mississippi

(901) 286-6200 - Main Office
(901) 833-8000 - Cell

SUITE	SIZE	RATE	TERM	TYPE	STATUS
A	1,200 +/- SF	N/A	N/A	Mod Gross	LEASED
B	1,200 +/- SF	N/A	N/A	Mod Gross	LEASED
C	1,400 +/- SF	\$2,400 /Month	5 Yrs	Mod Gross	AVAILABLE

PROPERTY DESCRIPTION

This lease opportunity is a beautifully maintained second-floor office suite that combines charm, visibility, and functionality. This 1,400 +/- SF suite sits within one of Olive Branch's most attractive commercial buildings, offering a welcoming professional setting for clients and staff alike. Please note that this is a second-floor suite with stair access only, as the building does not have an elevator. With exclusive monument signage, beautiful interior finishes, and a clean, move in ready layout, this suite provides a standout opportunity for any business looking to grow in a prime location.

LOCATION DESCRIPTION

Positioned along the highly traveled Goodman Road corridor, this location benefits from exceptional daily visibility with approximately 44,000 cars per day passing the site. Surrounded by established commercial activity and steady residential growth, the area offers strong connectivity and consistent exposure for any professional user.



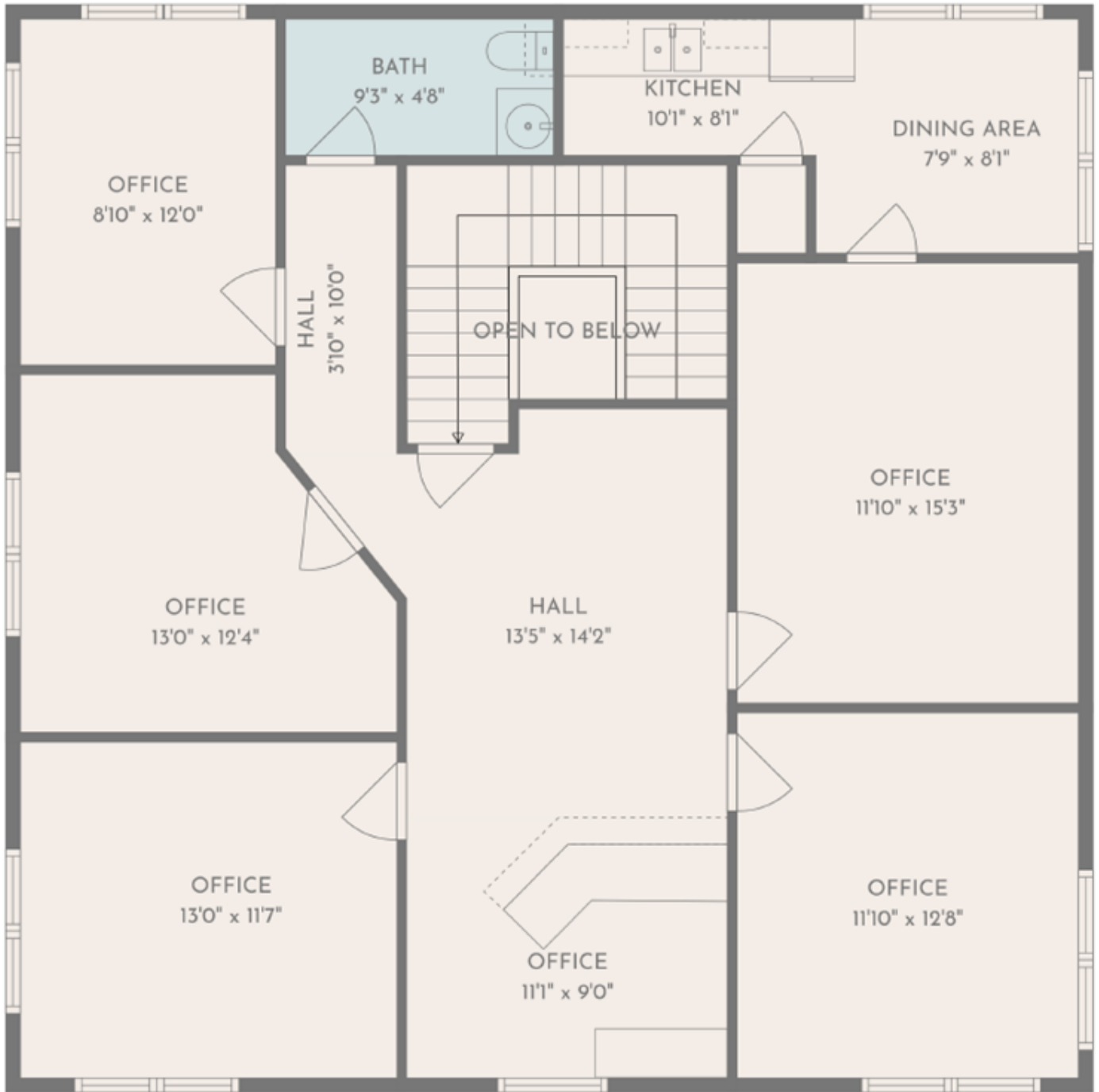
PROPERTY PHOTOS

Goodman Oaks Centre
6253 Goodman Rd E, Olive Branch, MS 38654



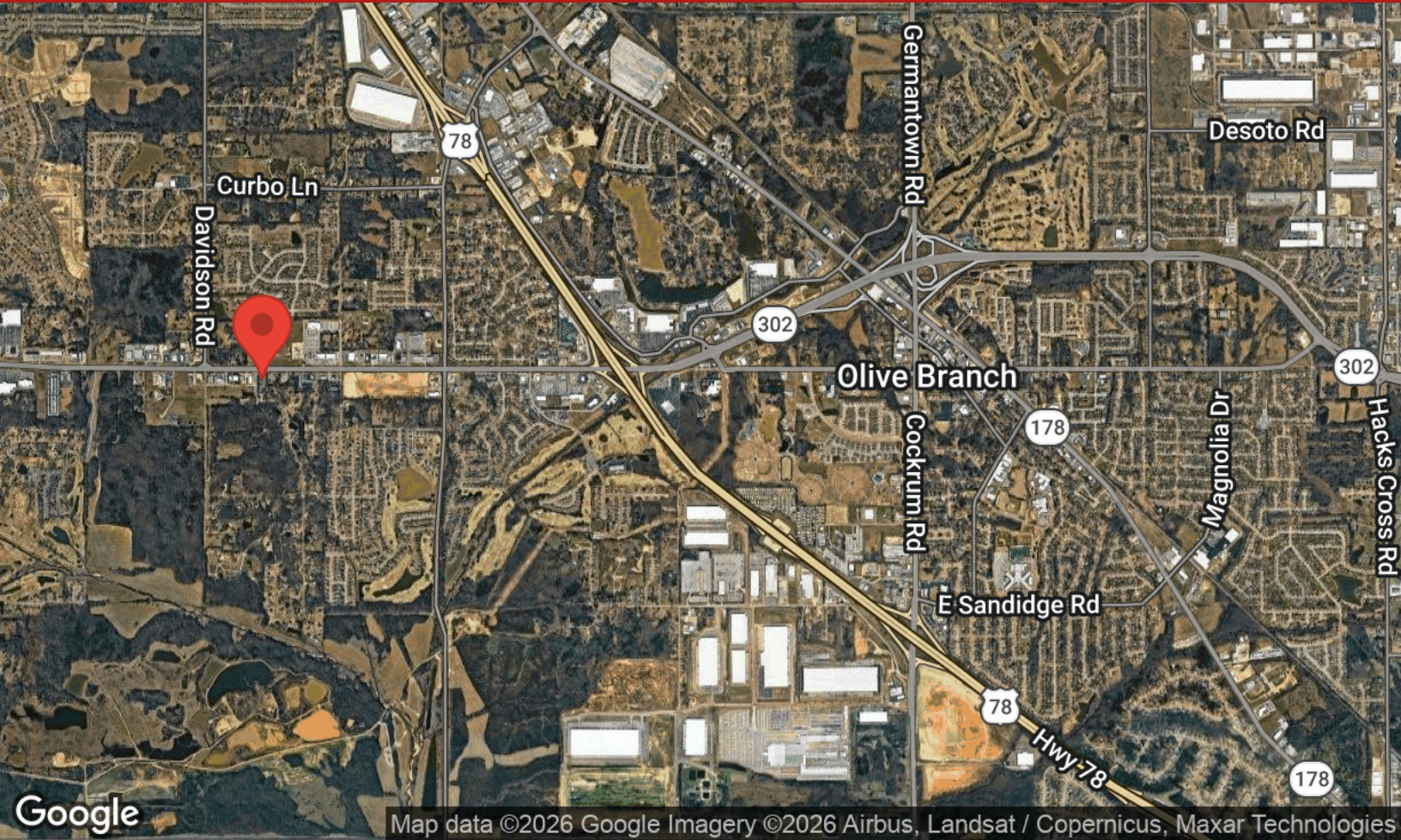
LAYOUT

Goodman Oaks Centre
6253 Goodman Road | Olive Branch, MS 38654

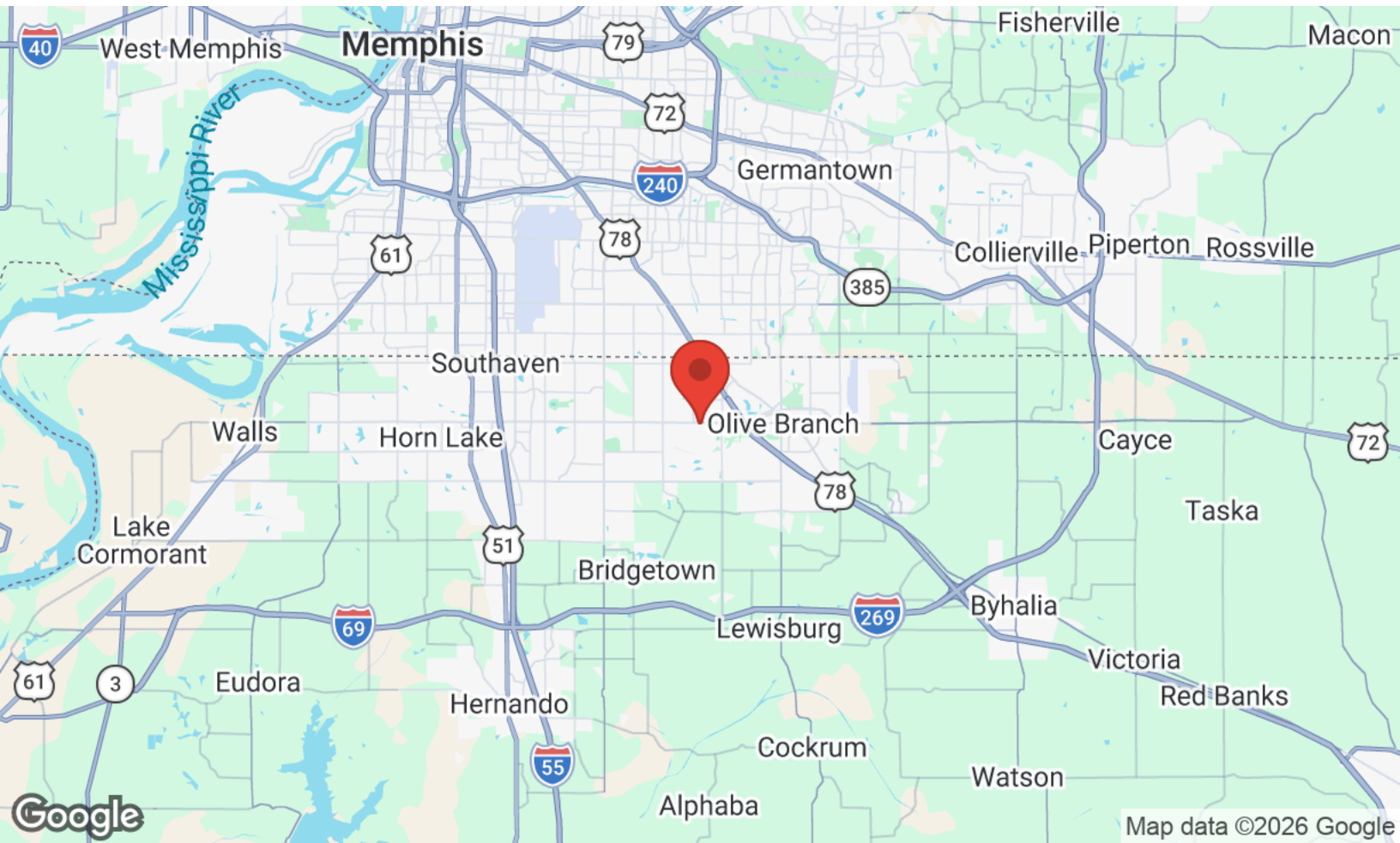


LOCATION MAPS

Goodman Oaks Centre
6253 Goodman Rd E, Olive Branch, MS 38654



Map data ©2026 Google Imagery ©2026 Airbus, Landsat / Copernicus, Maxar Technologies



Map data ©2026 Google