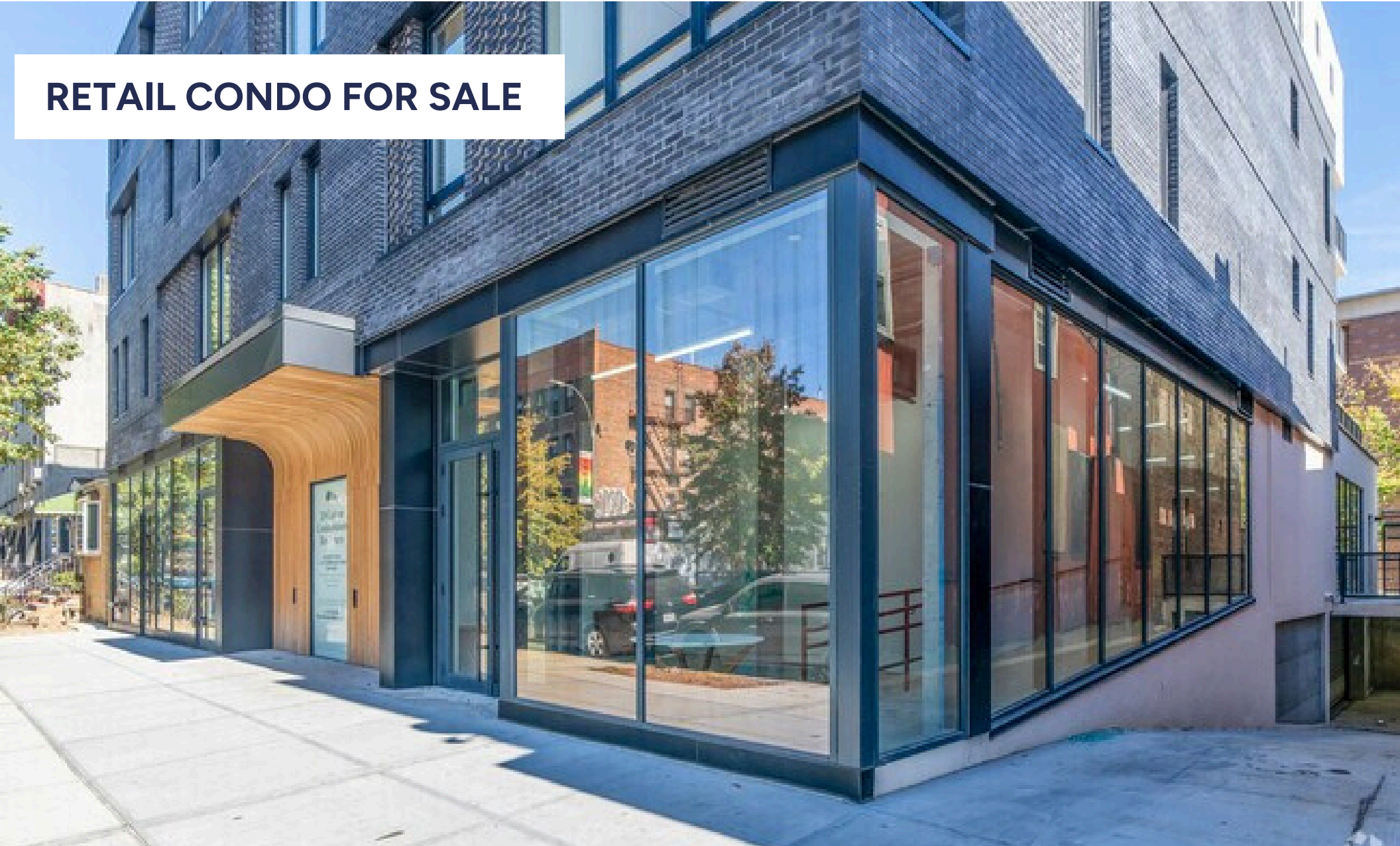


PROSPECT LEFFERTS GARDEN, BROOKLYN, NY

625 ROGERS AVENUE

MOD

RETAIL CONDO FOR SALE



SPACE DETAILS

LOCATION

Between Winthrop and Parkside Avenues

SPACE

Ground floor: 2,935 SF

POSSESSION

Immediate

ASKING PRICE

\$2,000,000

CAM

Pro Rata Share PSF

Approx \$6,000

TAXES

ICAP Abatement

Approx. \$4,000 w/ ICAP

Approx. \$40,000 wo/ ICAP

NEIGHBORS

Lincoln Market, Walgreens, Papa Johns, Sweet Catch, Classic Cups, Pacha Cafe, The Deia, Fringe Pilates, Ciao Bella Coffee

TRANSPORTATION



COMMENTS

- Prime Location in Prospect Lefferts Gardens: Located at the base of a newly constructed luxury condo building, offering high visibility and strong built-in foot traffic.
- Fully Built Out Restaurant: Ideal for restaurateurs and hospitality groups seeking expansion.
- Potential for Real Estate Tax Exemptions: There is an ICAP tax abatement in effect which provide significant property tax reductions or exemptions, enhancing long-term savings and ROI.
- Excellent Transit Access: Close to 2 & 5 subway lines, providing convenient access to Manhattan and Brooklyn.

CONTACTS

MEYER DAGMY

718-249-3613

m@modcre.com

EDDIE MAMIYE

917-379-6719

e@modcre.com

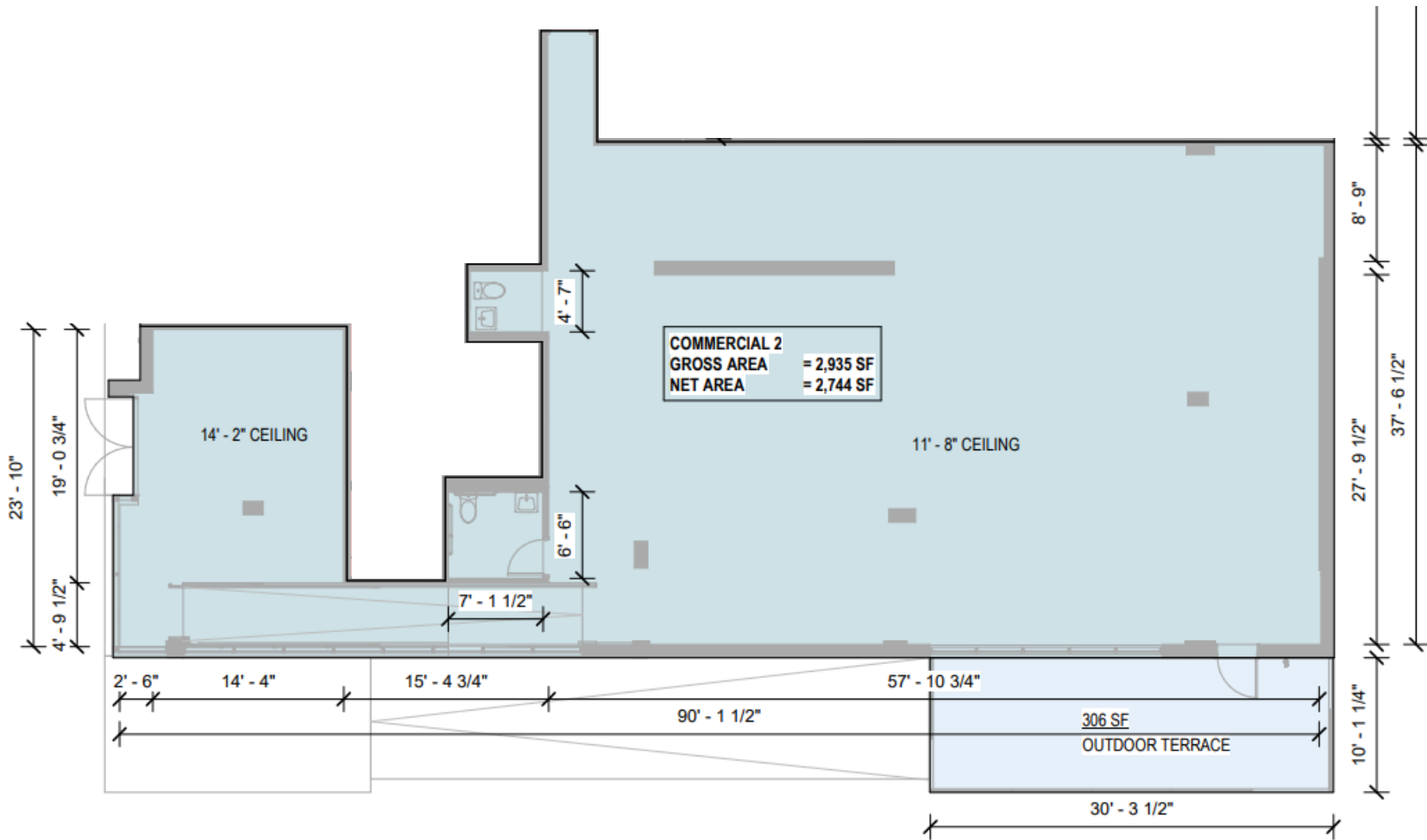
ISAAC BIJOU

718-594-6377

ib@modcre.com



FLOOR PLAN



CONTACTS

MEYER DAGMY

718-249-3613
 m@modcre.com

EDDIE MAMIYE

917-379-6719
 e@modcre.com

ISAAC BIJOU

718-594-6377
 ib@modcre.com



AREA MAP



CONTACTS

MEYER DAGMY

718-249-3613

m@modcre.com

EDDIE MAMIYE

917-379-6719

e@modcre.com

ISAAC BIJOU

718-594-6377

ib@modcre.com

