



For Lease – Continental Office Plaza

Office Availability • Property Highlights

2701 Troy Center Drive | Troy, MI

- Suites From 1,885 – 14,000 SF Available
- Ideal Troy Location with Many Walkable Restaurants
- Abundant Surface Parking
- Building is in a Michigan Opportunity Zone
- Several Suites Available Ready to Occupy
- Executive Covered Parking
- Recent Common Area Renovations
- Seconds from I-75/Big Beaver Interchange
- Grab and Go Café/Fitness Center



John Fricke
Direct | 248 872 7820
john.fricke@colliers.com



Jonathan Loos
Direct | 248 226 1692
jonathan.loos@colliers.com



Aerial – Nearby Restaurants





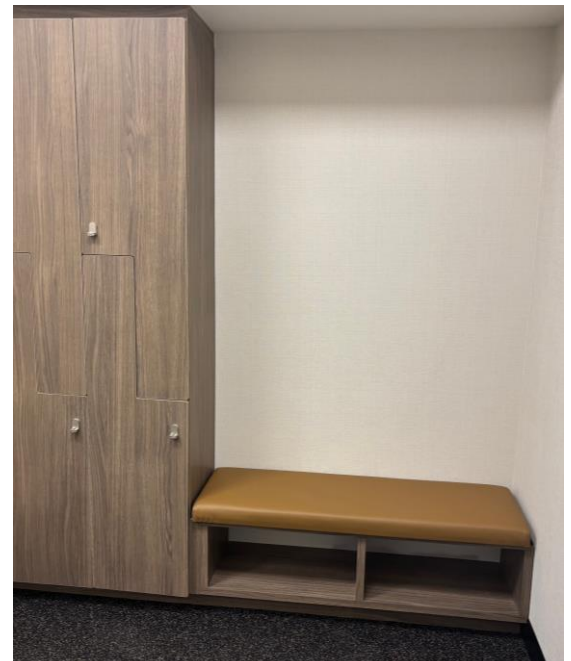
Building Lobby



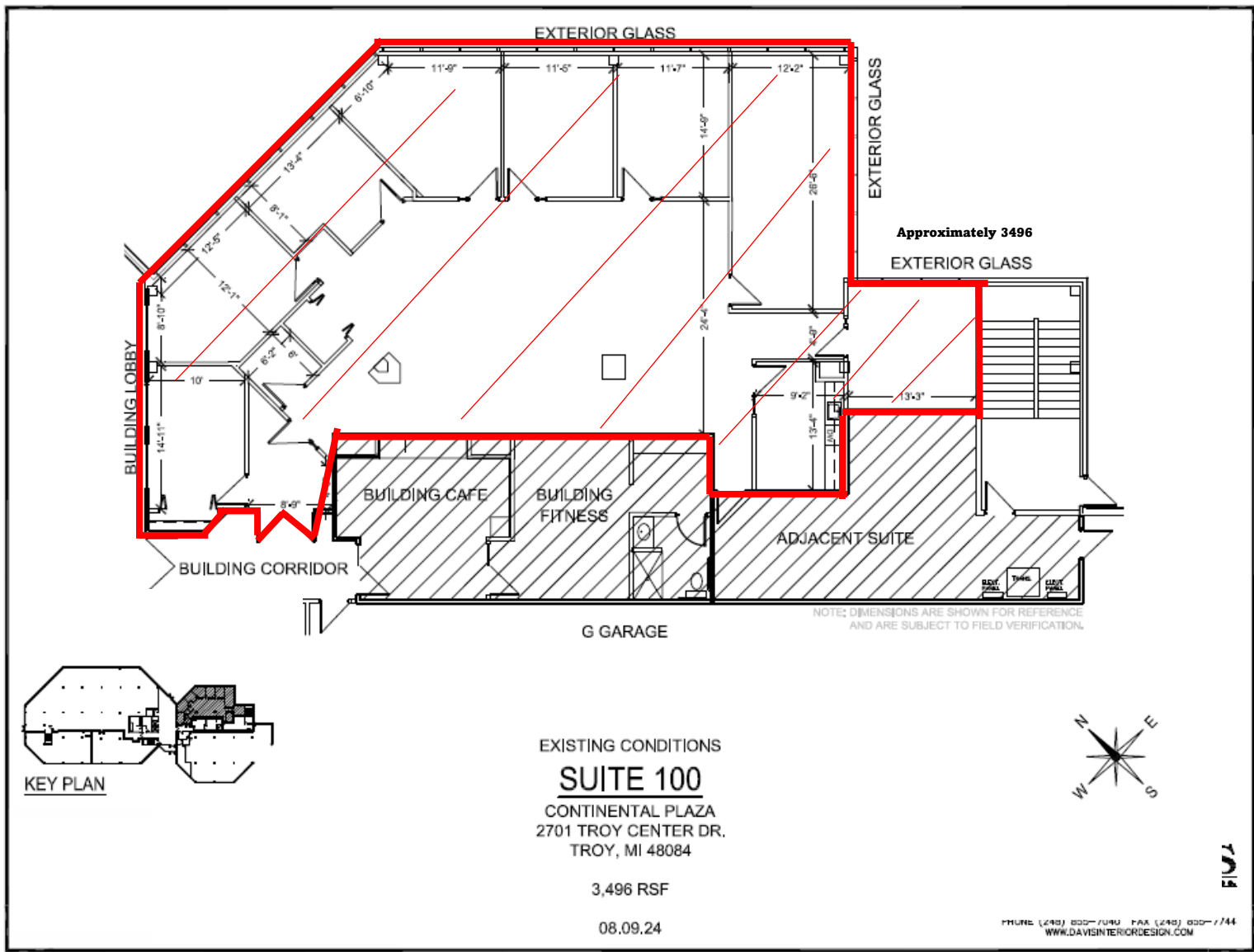
Café/Grab and Go Store



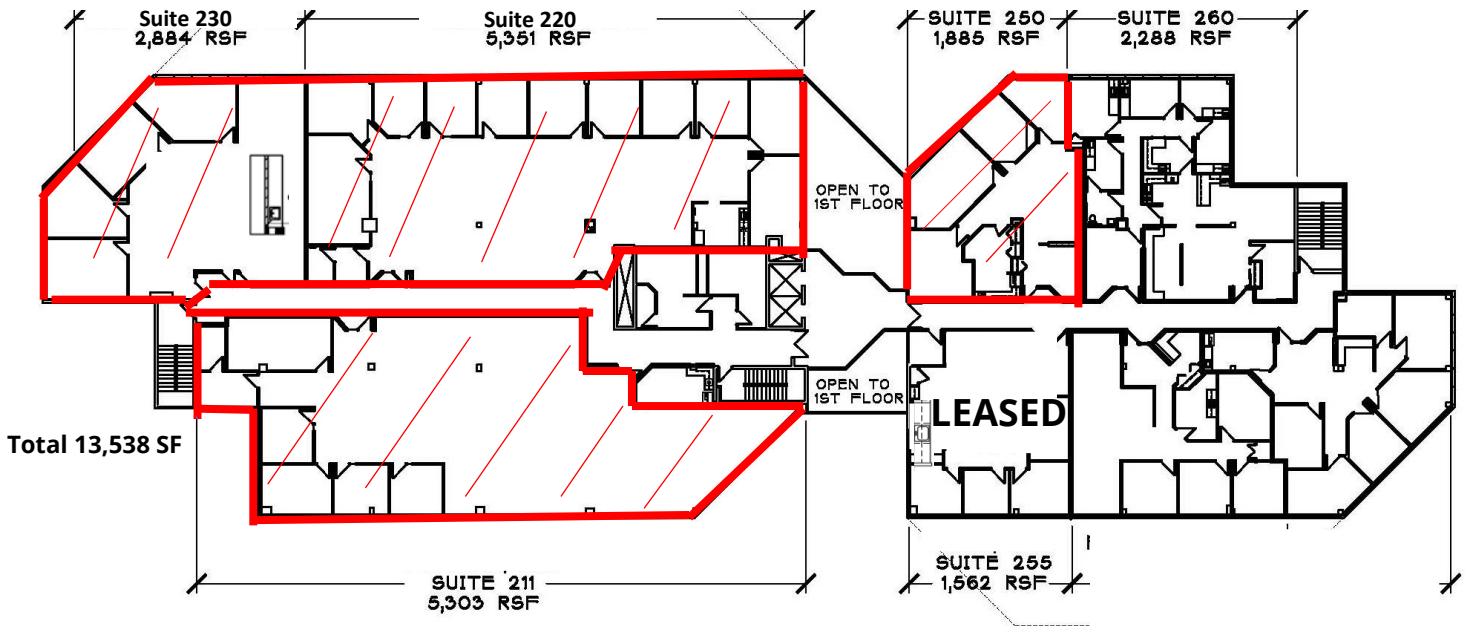
Fitness Center



Available Suites – 1st Floor



Available Suites – 2nd Floor

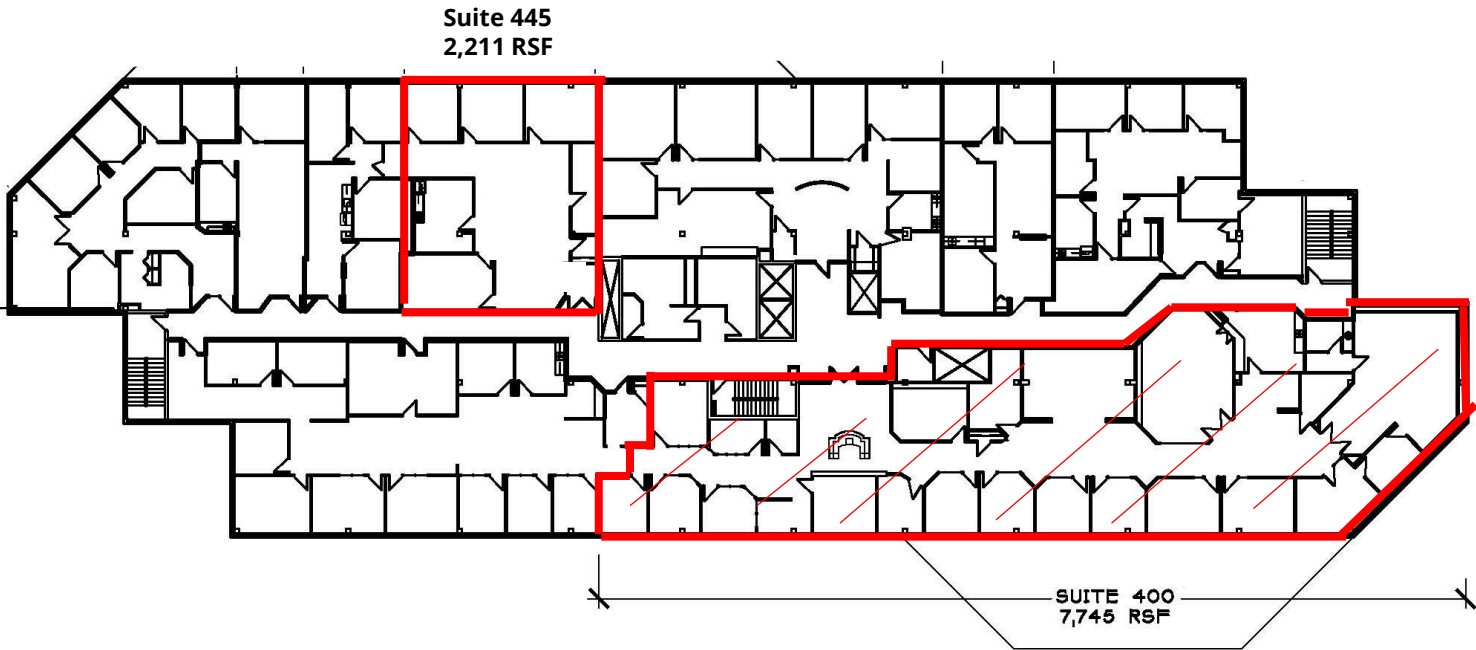


2ND FLOOR
CONTINENTAL PLAZA
2701 TROY CENTER DRIVE - TROY, MI 48084





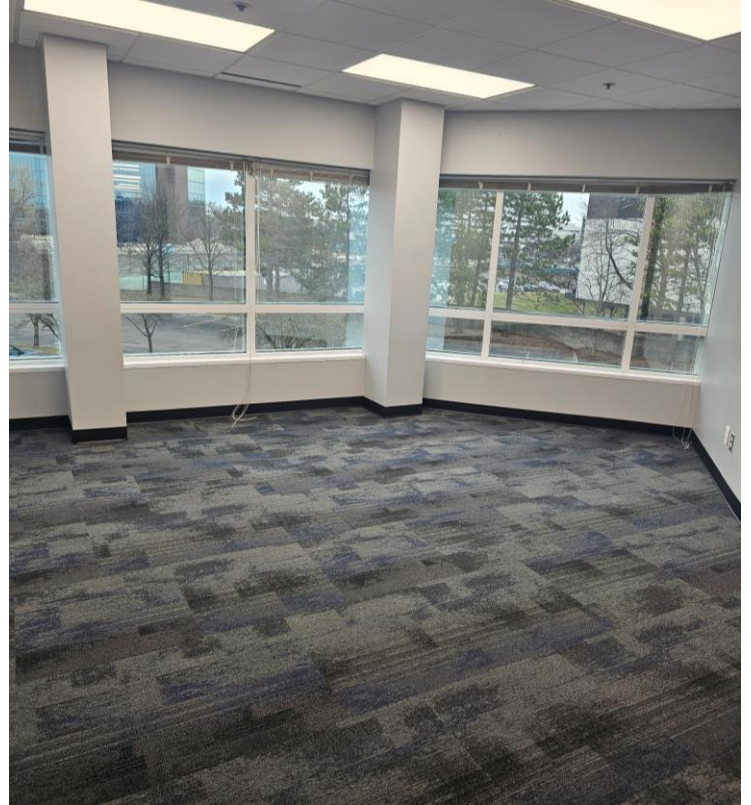
Available Suite – 4th Floor



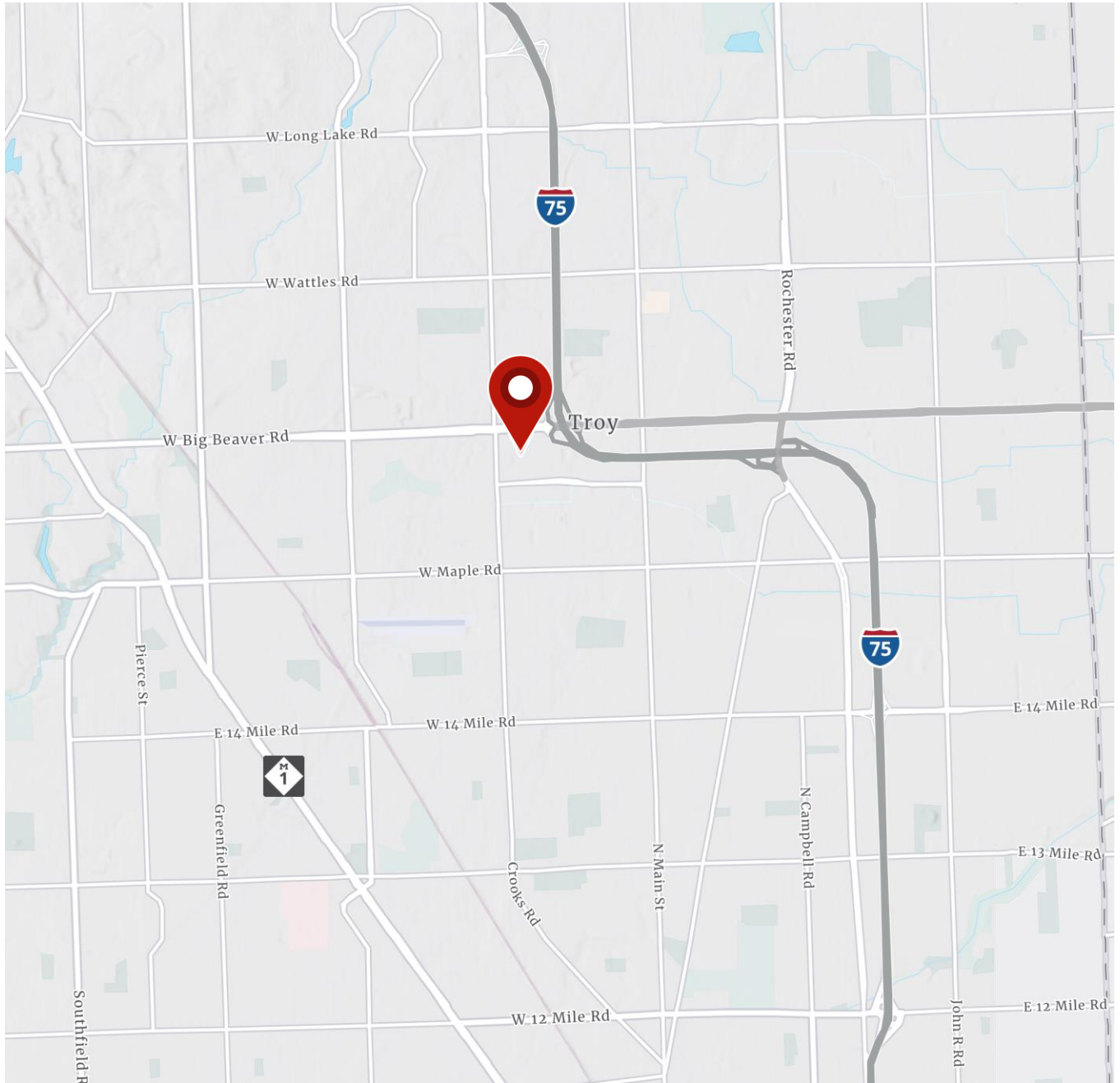
4TH FLOOR
CONTINENTAL PLAZA
2701 TROY CENTER DRIVE - TROY, MI. 48084



Move in Ready Suites Photos



Location Map



John Fricke
Direct | 248 872 7820
john.fricke@colliers.com



Jonathan Loos
Direct | 248 226 1692
jonathan.loos@colliers.com