

**HORIZON CORPORATE CENTER**  
1000 CRAWFORD PLACE, MOUNT LAUREL, NJ



**UPDATED LOBBY!**



**PRIME OFFICE SPACE  
JUST OFF ROUTE 73**

SUITES FOR  
LEASE FROM  
**1,522 SF to  
3,517 SF**



LEASE RATE  
**\$19.00 PSF**  
+ ELECTRIC & JANITORIAL



NAI Mertz | 21 Roland Avenue  
Mount Laurel, NJ 08054  
+1 856 234 9600 | [naimertz.com](http://naimertz.com)

**FOR MORE INFORMATION**

Rebecca Ting, SIOR  
☎ +1 856 234 9600 ext 206  
✉ [rebecca.ting@naimertz.com](mailto:rebecca.ting@naimertz.com)

Julie Kronfeld  
☎ +1 856 802 6516  
✉ [julie.kronfeld@naimertz.com](mailto:julie.kronfeld@naimertz.com)

# CURRENT AVAILABILITIES

## 1000 CRAWFORD PLACE MOUNT LAUREL | NEW JERSEY

### FIRST FLOOR

SF

SUITE 140 1,522 [CLICK HERE FOR VIRTUAL TOUR](#)

SUITE 160 2,412

### SECOND FLOOR

SF

SUITE 220 1,633

SUITE 240 1,884

**CAN BE COMBINED FOR A TOTAL OF 3,517 SF**

### THIRD FLOOR

SUITE 380 2,770

**AVAILABLE FOR SUBLEASE**

### FOURTH FLOOR

**FULLY LEASED**

#### PROPERTY DESCRIPTION

Office suite availability within this four-story, 39,445 SF Class 'A' office building. Take advantage of this opportunity to lock up a long-term lease at one of the area's premier addresses!



LEASE RATE  
**\$19.00 PSF**  
+ ELECTRIC & JANITORIAL

IDEALLY LOCATED  
SUBURBAN  
OFFICE SPACE

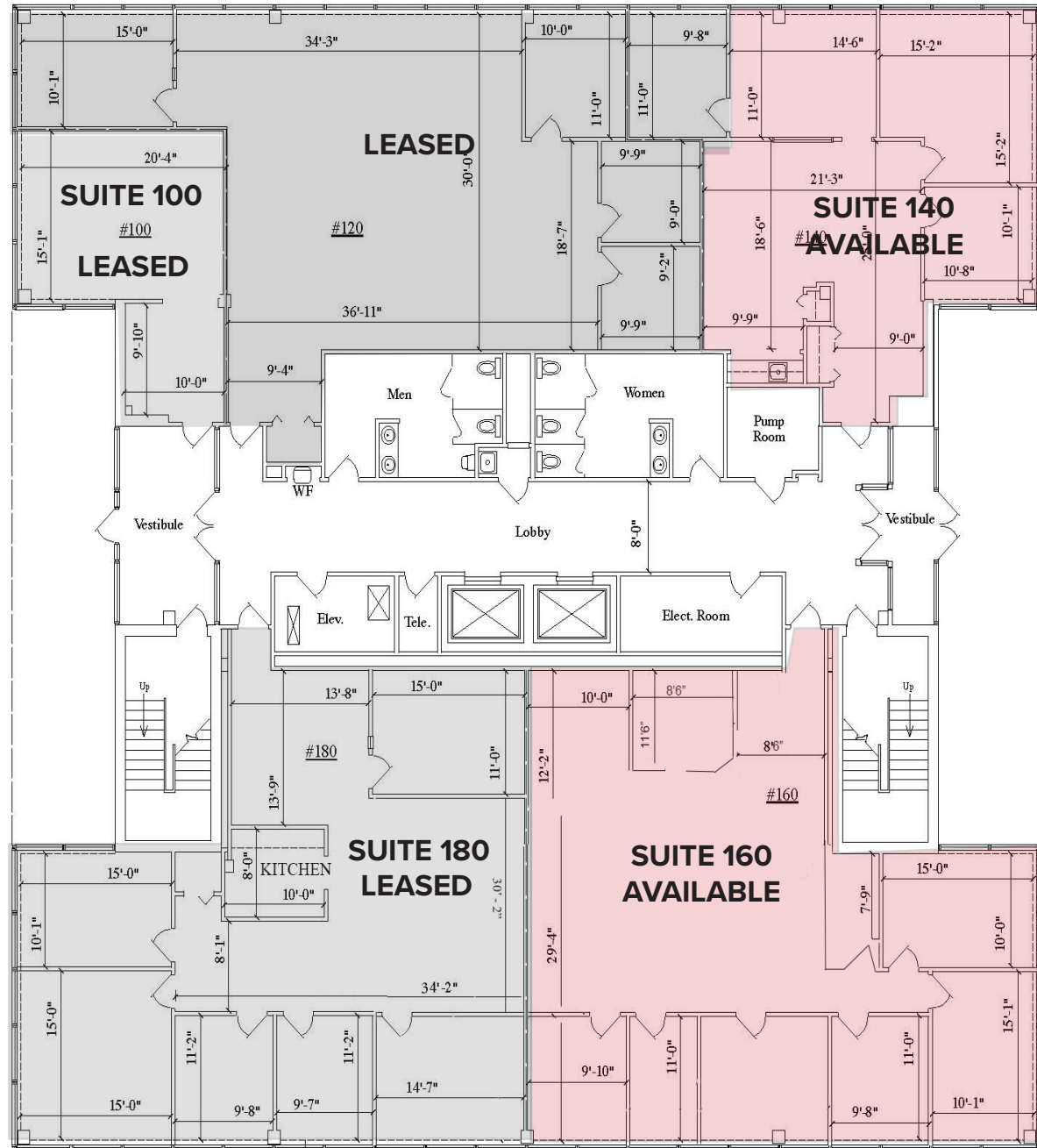
#### FOR MORE INFORMATION



Rebecca Ting, SIOR  
☎ +1 856 234 9600 ext 206  
✉ rebecca.ting@naimertz.com

Julie Kronfeld  
☎ +1 856 802 6516  
✉ julie.kronfeld@naimertz.com

## FIRST FLOOR



SUITE 100  
548 SQ. FT.

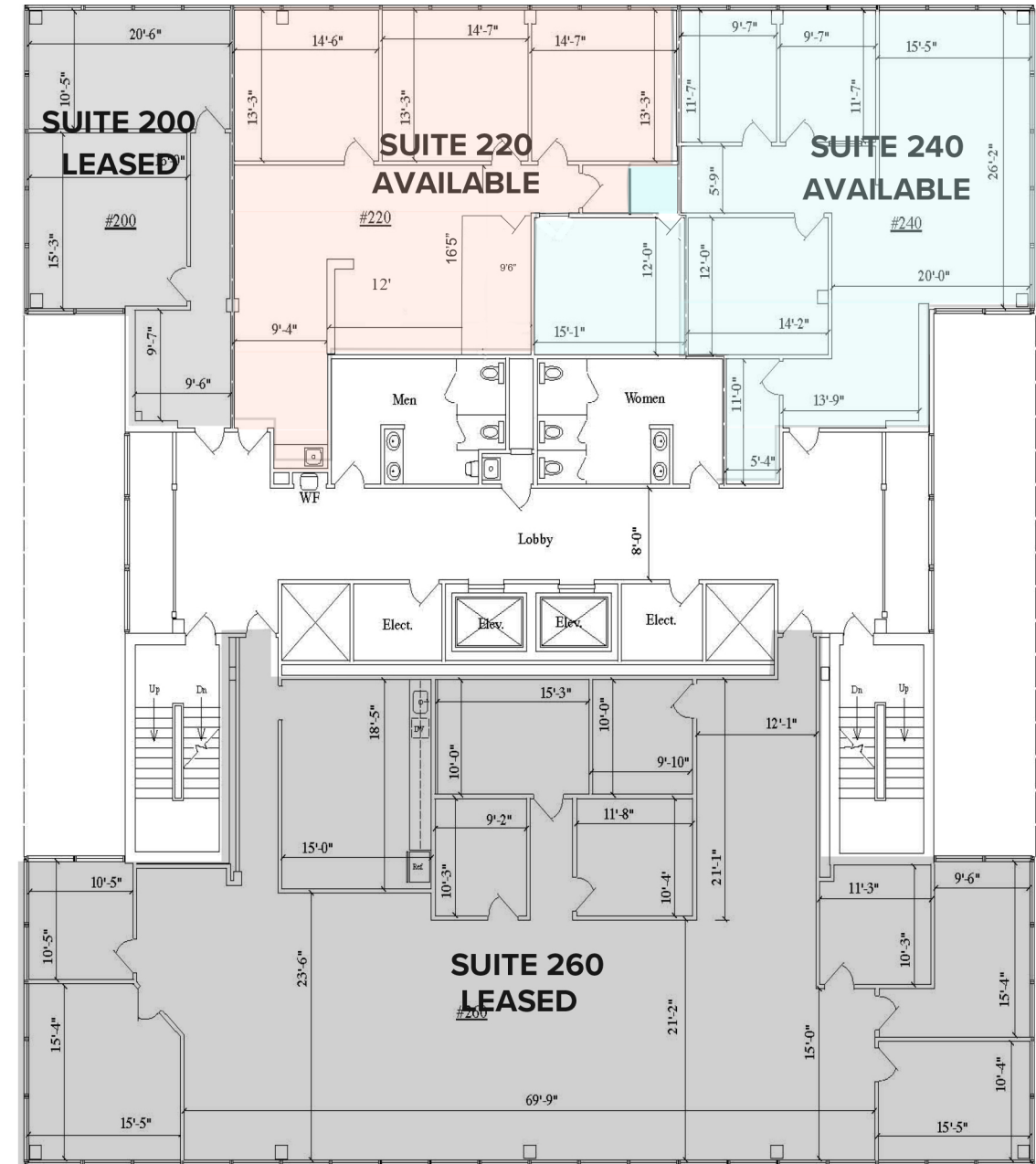
SUITE 120  
2,122 SQ. FT.

SUITE 140  
1,522 SQ. FT.

SUITE 160  
2,412 SQ. FT.

SUITE 180  
2,412 SQ. FT.

## SECOND FLOOR



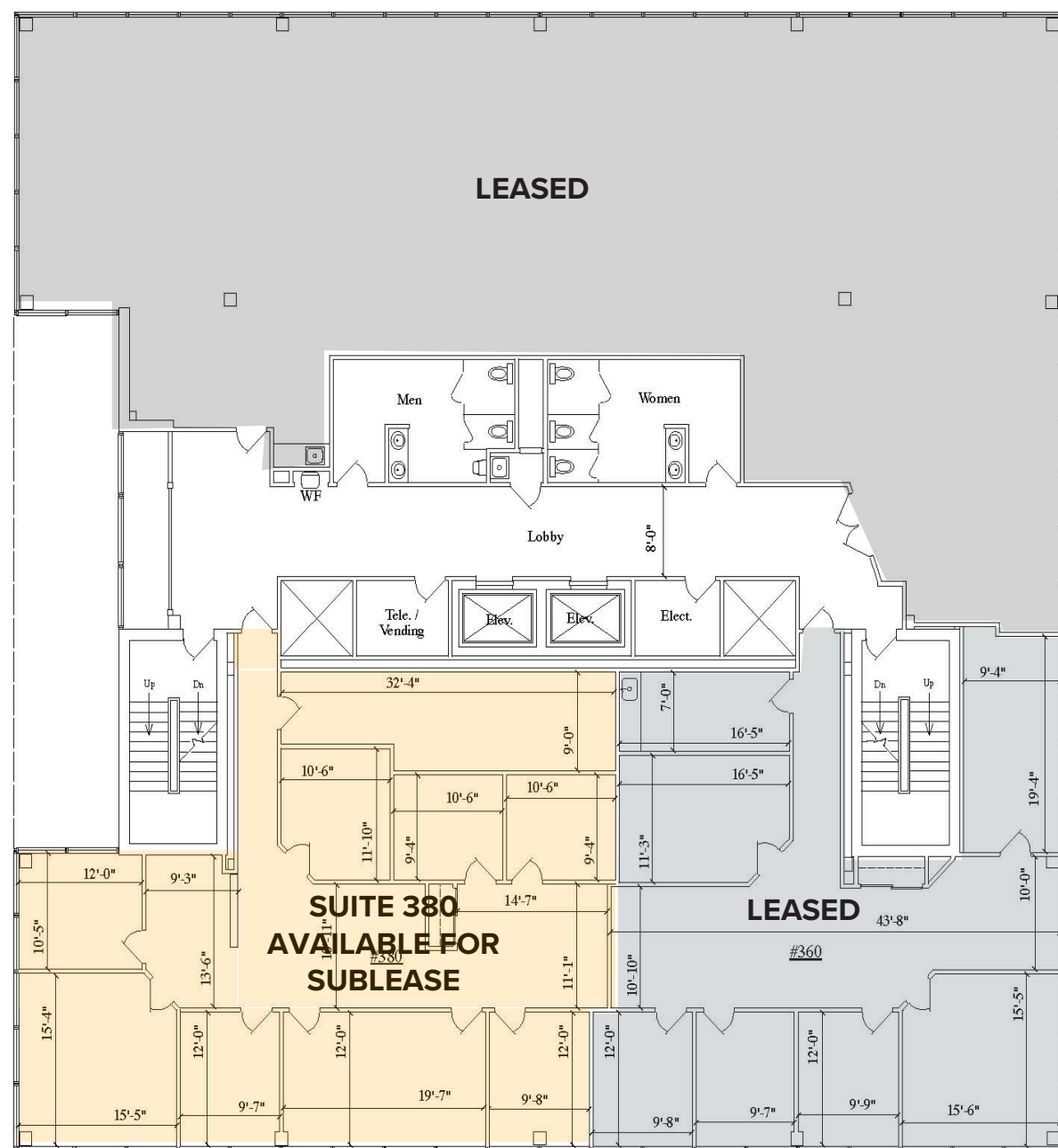
SUITE 200  
858 SQ. FT.

SUITE 220  
1,633 SQ. FT.

SUITE 240  
1,884 SQ. FT.

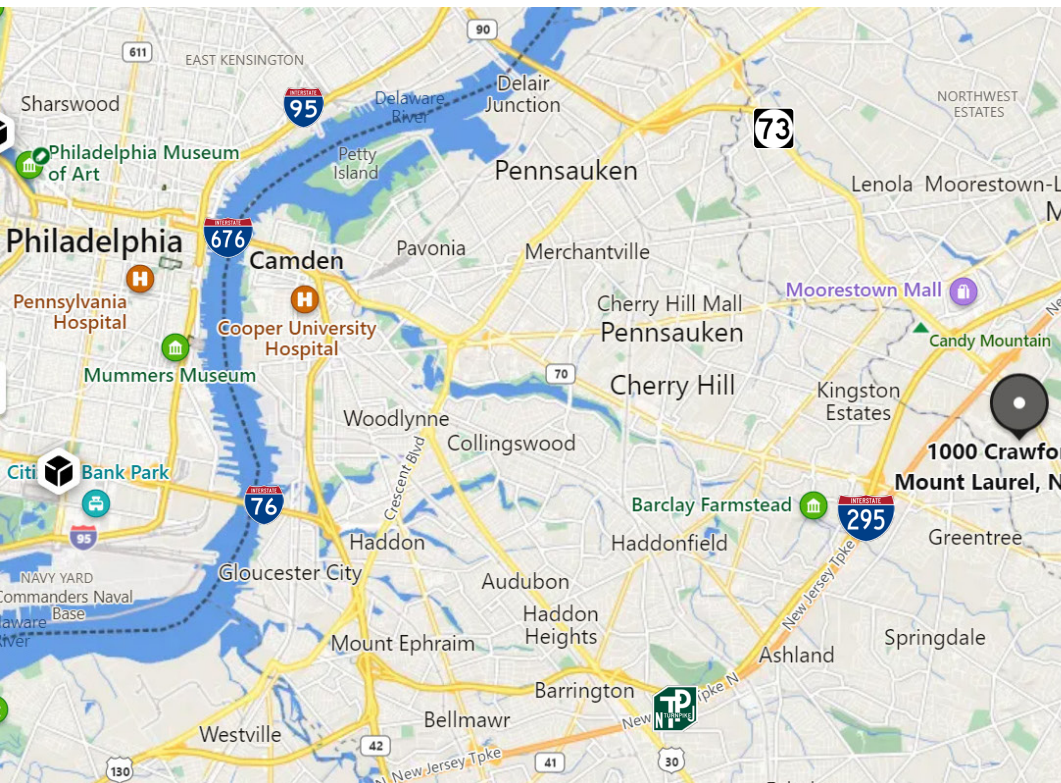
SUITE 260  
4,825 SQ. FT.

### THIRD FLOOR



**1000 CRAWFORD PLACE**

**MOUNT LAUREL, NJ 08054**



**LOCATION INFORMATION**

- Located just off Route 73 in Horizon Corporate Center
- Minutes from NJ Turnpike (Exit 4), I-295 (Exit 34) and Routes 38 & 70
- Within 25 minutes to Center City Philadelphia and Philadelphia International Airport



NAI Mertz | 21 Roland Avenue  
Mount Laurel, NJ 08054  
+1 856 234 9600 | [naimertz.com](http://naimertz.com)

**FOR MORE INFORMATION**

Rebecca Ting, SIOR  
☎ +1 856 234 9600 ext 206  
✉ [rebecca.ting@naimertz.com](mailto:rebecca.ting@naimertz.com)

Julie Kronfeld  
☎ +1 856 802 6516  
✉ [julie.kronfeld@naimertz.com](mailto:julie.kronfeld@naimertz.com)