

FOR SALE **20634 N 28TH ST**

UNIT 115-125, PHOENIX, AZ 85050



ZACH OLIVET
Vice President

602.885.5583
zolivet@novodevelops.com

OFFERING



PROPERTY DETAILS

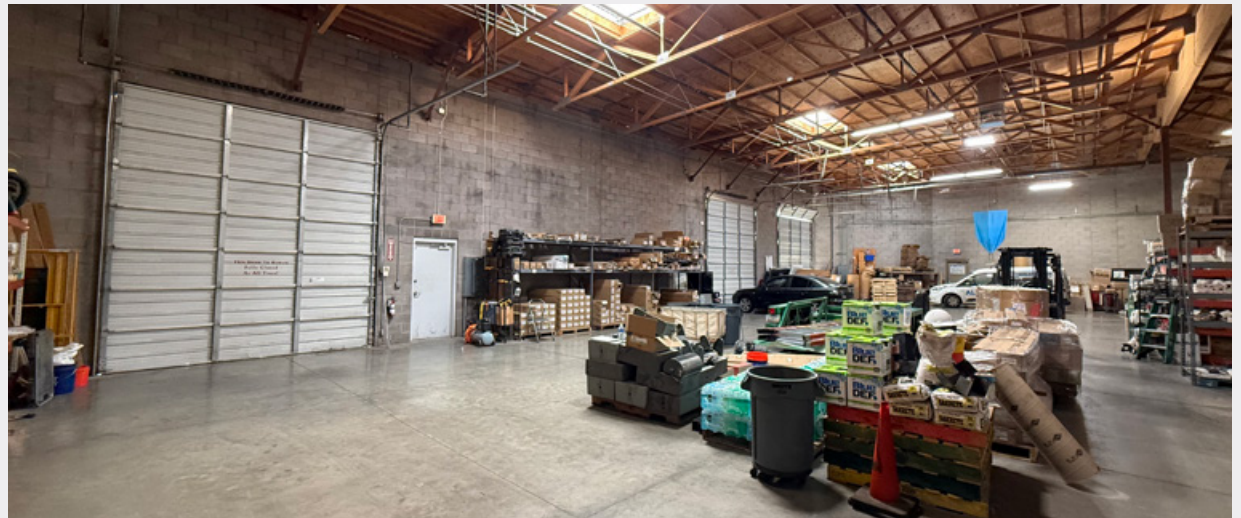
Property Type	Industrial/Flex
Lot Size	+/- 8,213 SF
Available SF	+/- 8,213 SF
Zoning	CP/GCP, City of Phoenix
Parcel Nos	213-11-192, 213-11-193, 213-11-194

PROPERTY HIGHLIGHTS

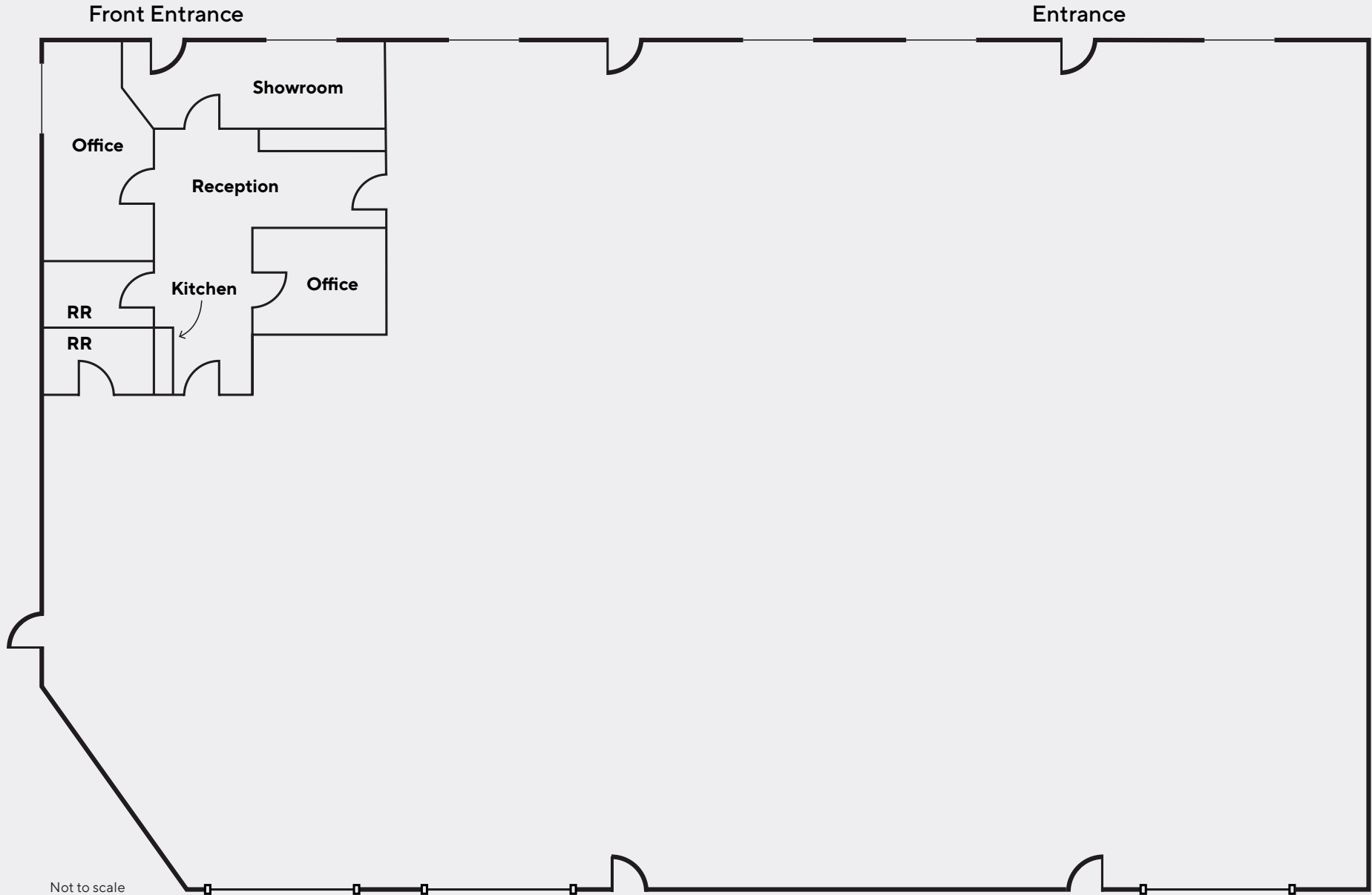
- Year Built: 2007
- EVAP Cooled Warehouse
- 18' Clear Height
- Sprinklers
- Sky Lights
- LED Lighting
- Three Grade Level Rollup Doors (12'x14')
- Multi-Tenant Capable
(Three Separate Electrical Meters)
- 10% Office And 90% Warehouse
- 9 Reserved Parking Spaces
- Resurfaced Parking Lot
within the last few months



PROPERTY PHOTOS



FLOOR PLAN



Not to scale

SITE PLAN



LOCATION



ZACH OLIVET

Vice President

602.885.5583

zolivet@novodevelops.com

novodevelops.com

This information has been secured from sources believed to be reliable, but no presentations or warranties are made, expressed or implied, as to the accuracy of the information. References to the square footage are approximate. Buyer and tenant must verify the information and bears all risk for any inaccuracies. All quoted prices are subject to change without notice.