



**10208 PARK PLAZA,
ROTHSCHILD, WI
54474**



WWW.LOKRECOMPANIES.COM



2026

VISIBLE TO 13,300+ VEHICLES DAILY, JUST 2 MINUTES FROM I-39



- 2050 SF of available space
- Located off of I-39 and US Hwy 51
- 10 minutes from Wausau's city center
- Great for a variety of uses such as pizza, retail, and medical
- 24 easy-to-access parking stalls
- Surrounded by strong business anchors such as Culvers and Pick N' Save (see page 6 & 7)





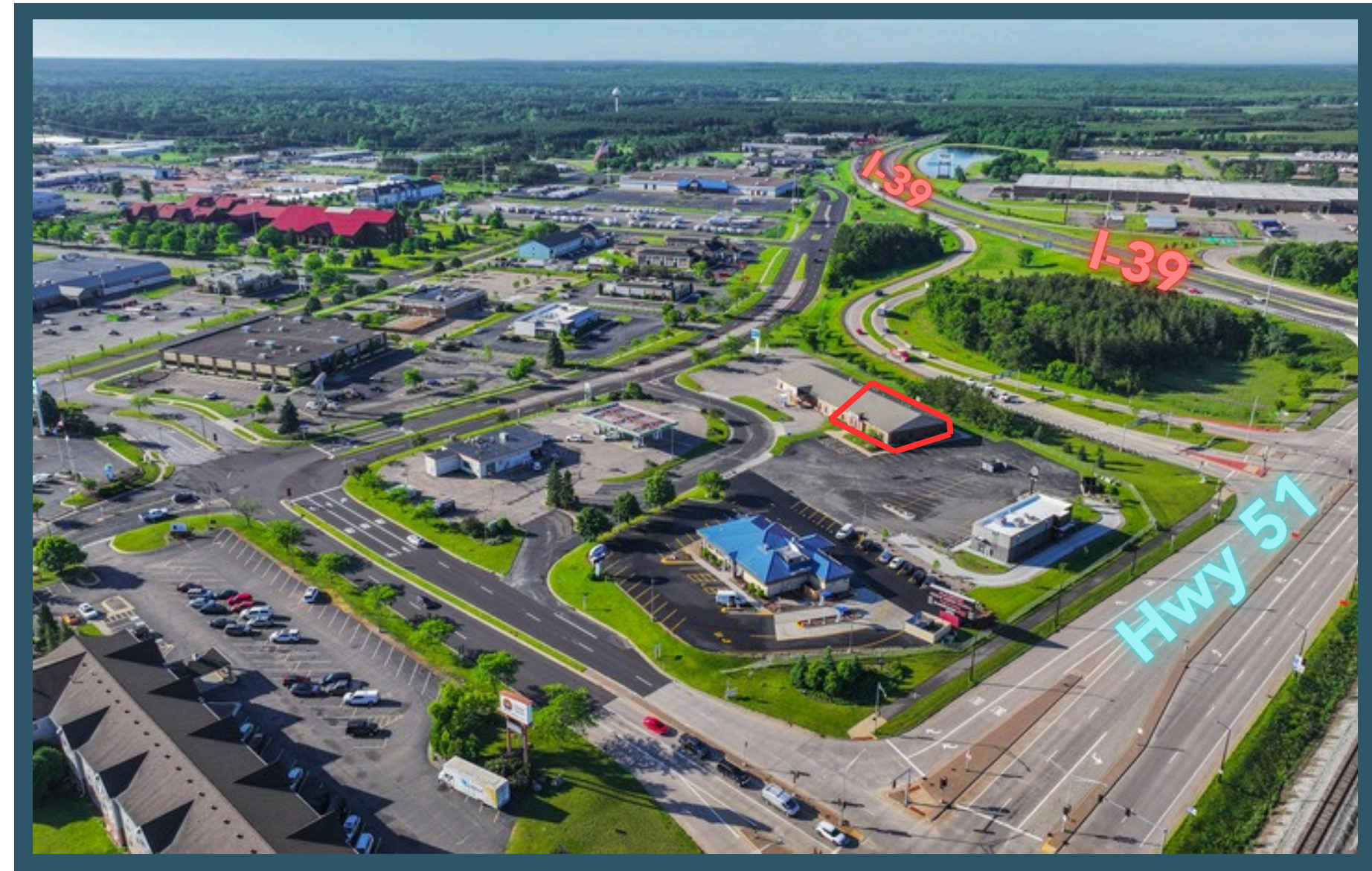
2,050 SF AVAILABLE WITH DIVISIBLE SPACE OPTIONS

— AVAILABILITY

2,050 square feet

— NNN EXPENSES

\$4/SF



VISIBLE FROM ROTHSCILD'S BUSIEST ROADWAYS

22 MILE RADIUS POPULATION



DAILY CARS

13,300+



22 MILE RADIUS
POPULATION

138,787



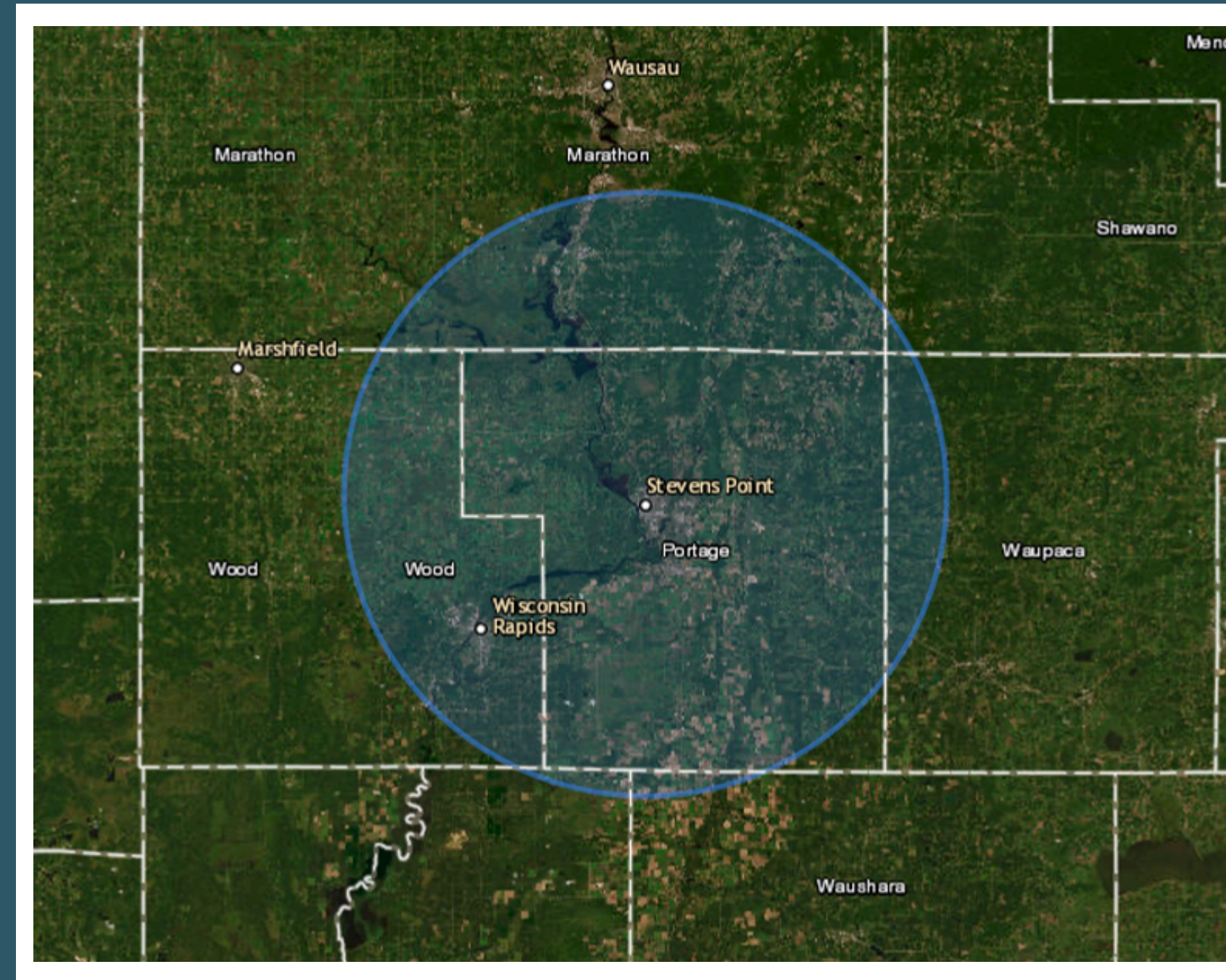
MARATHON COUNTY
HOUSEHOLDS

57,866



METRO AREA AVG.
HOUSEHOLD INCOME

\$77,844

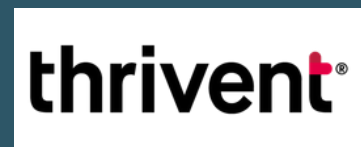


CO-TENANTS THAT HAVE SHAPED THE ROTHSCHILD AREA



BMO (Tenant since 2021)

BMO Bank is a well-established financial institution offering personal, business, and commercial banking services. Its presence as a co-tenant helps bring added credibility, convenience, and consistent customer traffic to the property.



Thrivent (Tenant since 2022)

Thrivent is a financial services organization offering guidance in insurance, investments, retirement planning, and wealth management. Its presence adds a professional, service-focused co-tenant that attracts clients and community members to the property.



True North Surgical (Tenant since 2021)

True North Surgical is a medical device and orthopedic education company serving healthcare providers throughout Northern Wisconsin and the Upper Peninsula. Their presence adds a strong medical-focused co-tenant to the complex and helps support a professional, appointment-based customer environment.



Allegiance Medical (Tenant since 2021)

Allegiance Medical Group serves clients through scheduled medical examination services, contributing to the building's strong mix of professional and healthcare-related tenants.

SITE MAP

10208 Park Plaza,
Rothschild, WI 54474





**THANK
YOU**

CONTACT US

VICTOR ANDERSON

📞 1.715.574.1677

🌐 www.lokrecompanies.com

📍 Wausau, WI.