

For Lease

📍 2401 E Linden Avenue, Linden, NJ

📏 17,800 – 65,470 SF Available



Get in Touch

Jordan Metz

Senior Vice President

973-493-0385

jordan@metzindustrial.com

Benito Abbate

Senior Associate

908-655-8331

ben@metzindustrial.com

James Friel

Sales Associate

908-305-9001

james@metzindustrial.com

UNIT A
47,670 SF

UNIT B
17,800 SF



Property Highlights

Unit A

 **47,670 SF Available** | Up to 3,000 SF Office

 **7 Tailboards & 2 Drive-in Doors**

 **22' Clear**

 **Wet Sprinkler | Heavy Power**

 **Ample Parking**

Location Highlights

- **Zoned Light Industrial**
- **Access to NJTP, Routes 1-9 & Goethals Bridge**
- **1 Mile to NJ Transit Linden Train Station**
- **7 Miles to Newark Liberty Airport**
- **10 Miles to Port Elizabeth/Newark**



Property Highlights

Unit B

 **17,800 SF Available** | Up to 2,500 SF Office

 **3 Tailboards**

 **22' Clear**

 **Wet Sprinkler** | Heavy Power

 **Ample Parking**

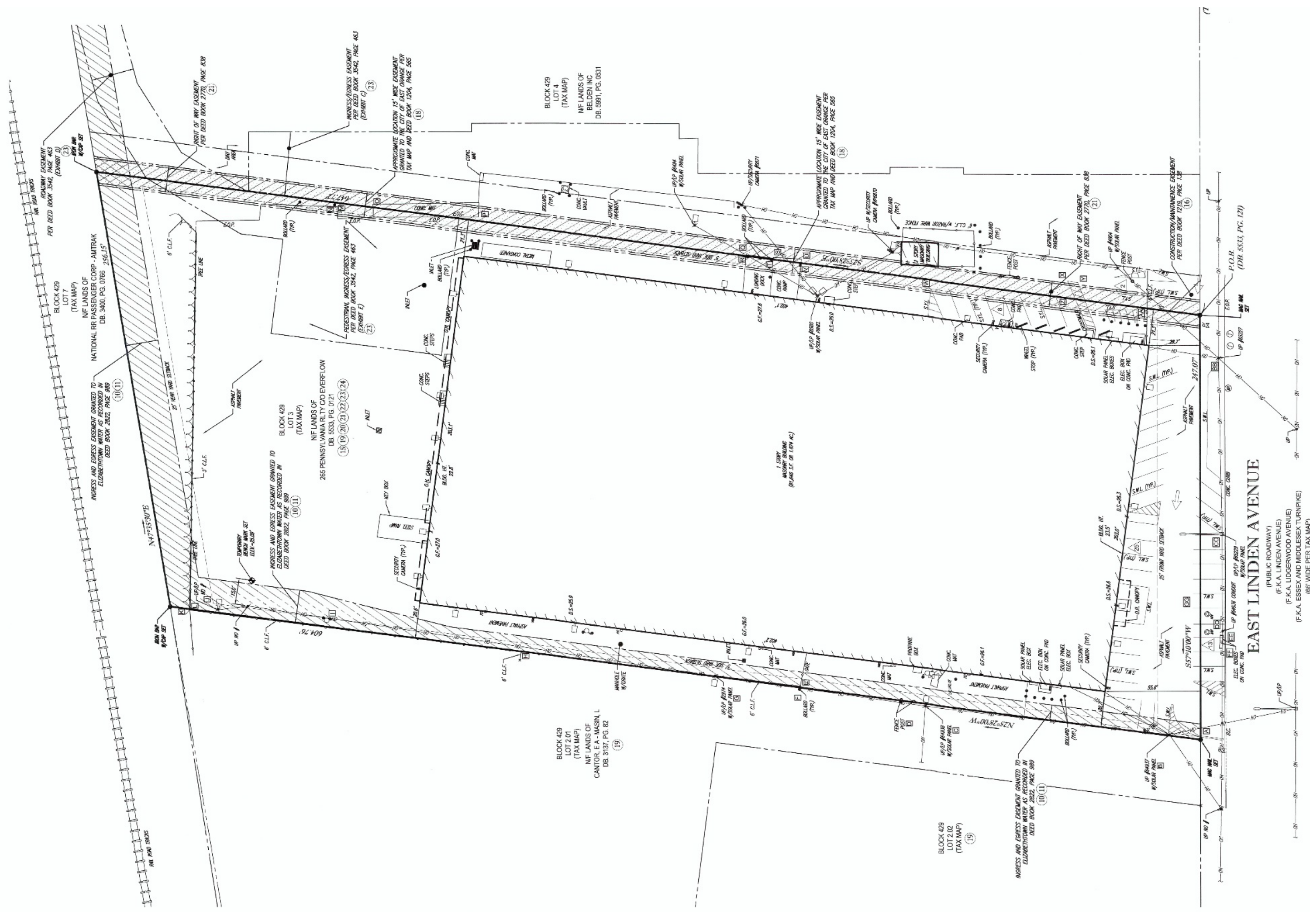
Location Highlights

- **Zoned Light Industrial**
- **Access to NJTP, Routes 1-9 & Goethals Bridge**
- **1 Mile to NJ Transit Linden Train Station**
- **7 Miles to Newark Liberty Airport**
- **10 Miles to Port Elizabeth/Newark**





SITE PLAN



EAST LINDEN AVENUE

(PUBLIC ROADWAY)
 (F.K.A. LINDEN AVENUE)
 (F.K.A. LUDGERWOOD AVENUE)
 (F.K.A. ESSEX AND MIDDLESEX TURNPIKE)
 (86' WIDE PER TAX MAP)

BLOCK 429
 LOT 4
 (TAX MAP)
 NIF LANDS OF
 BELDEN INC
 DE 5991, PG. 0631

BLOCK 429
 LOT 3
 (TAX MAP)
 NIF LANDS OF
 265 PENNSYLVANIA RLY CO EVERELOW
 DB 5533, PG. 0121

BLOCK 429
 LOT 2.01
 (TAX MAP)
 NIF LANDS OF
 CANTOR, E.A. - MASINI, L
 DB 3137, PG. 82

BLOCK 429
 LOT 2.02
 (TAX MAP)

I.O.L.R.
 (D.B. 5533, PG. 121)

UP 10' /

UP 10' /

UP 10' /

UP 10' /

UP 10' /

UP 10' /

UP 10' /

UP 10' /

UP 10' /

UP 10' /

UP 10' /

UP 10' /

UP 10' /

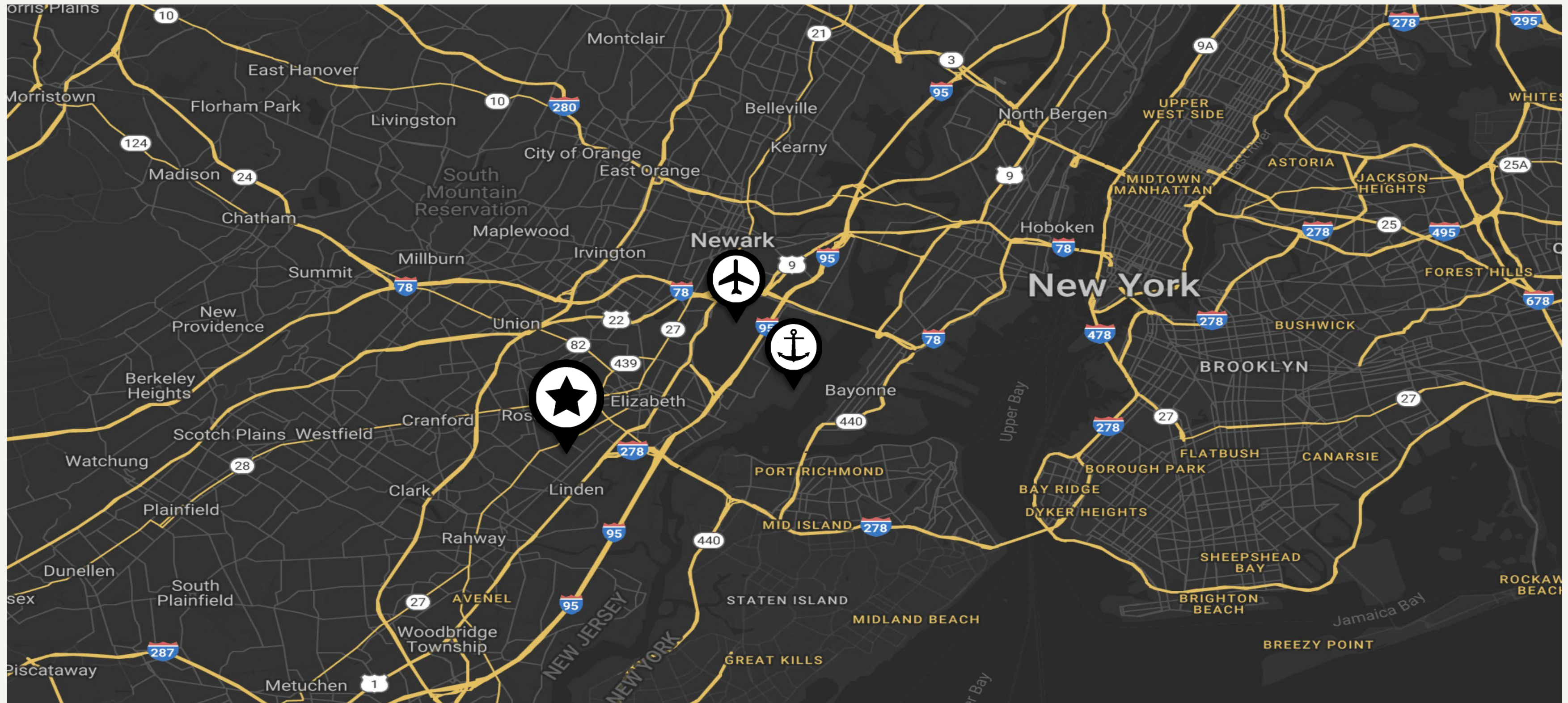
UP 10' /

UP 10' /

UP 10' /

Location Map

 2401 E. Linden Avenue, Linden, NJ

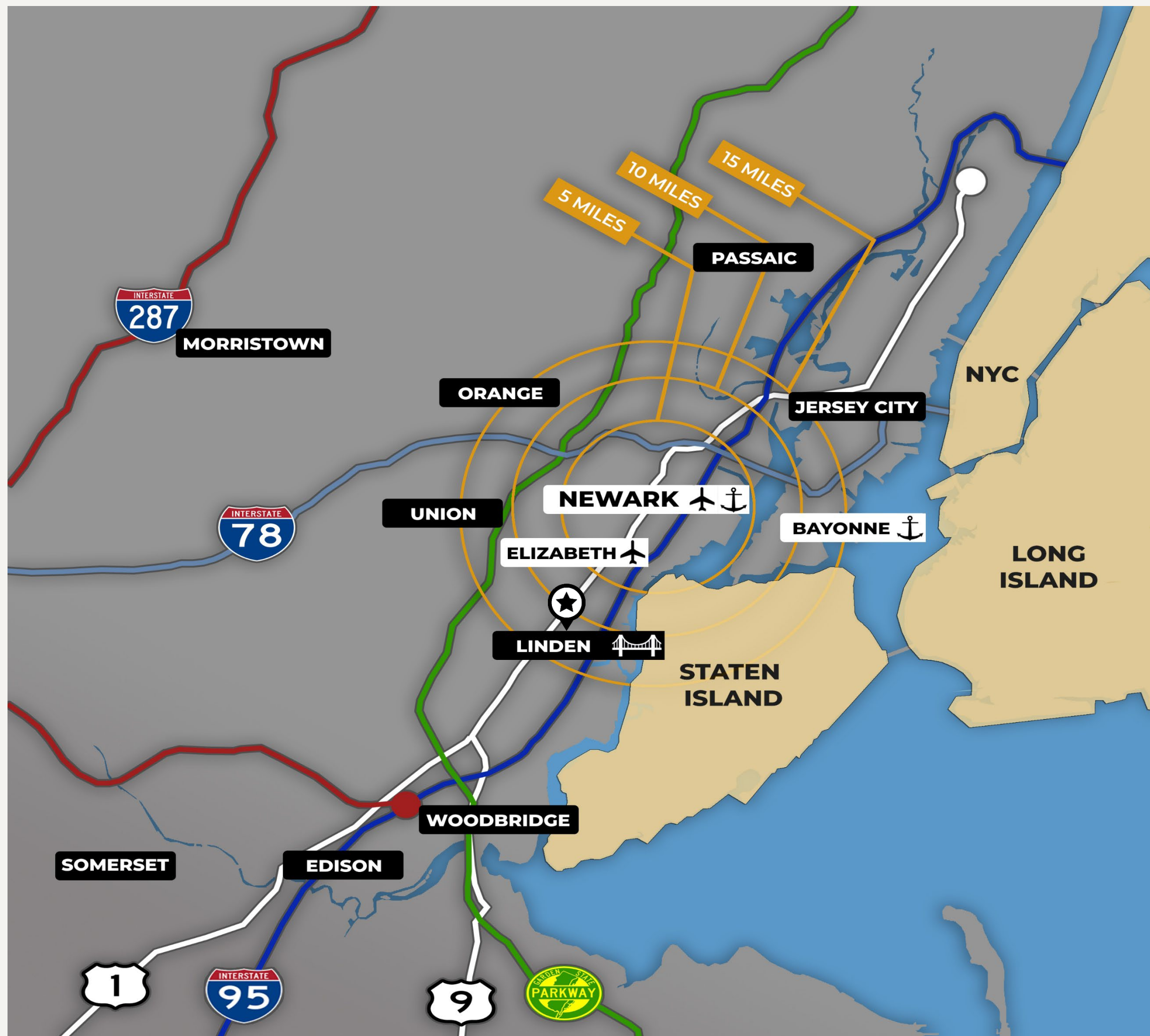


LOCATION IN MAP

Proximity Highlights

- Access to the **NJTP, Routes 1-9 & Goethals Bridge**
- 1 Mile to **NJ Transit Linden Train Station**
- 7 Miles to **Newark Liberty Airport**
- 10 Miles to **Port Elizabeth / Newark**
- **Proximity to New York Markets**





📍 2401 E. Linden Avenue, Linden, NJ

The city of **Linden, NJ** is in a prime port-adjacent location with access to:

- **Newark Liberty Airport**
- **Port Elizabeth/Newark**
- Staten Island via the **Goethals Bridge**

With road access to:

- **Route 1-9**
- **I-95**
- **Garden State Parkway**



For more information please contact
our exclusive brokers:

Jordan Metz

Senior Vice President

973-493-0385

jordan@metzindustrial.com

Benito Abbate

Senior Associate

908-655-8331

ben@metzindustrial.com

James Friel

Sales Associate

908-305-9001

james@metzindustrial.com



This document has been prepared by Bussel Realty Corp. based on public information. Bussel Realty Corp. makes no guarantees, representations or warranties of any kind, expressed or implied, regarding the information including, but not limited to, warranties of content, accuracy and reliability. Any interested party should undertake their own inquiries as to the accuracy of the information. Bussel Realty Corp. excludes unequivocally all inferred or implied terms, conditions and warranties arising out of this document and excludes all liability for loss and damages arising there from. This publication is the copyrighted property of Bussel Realty Corp. and/or its licensor(s).