

**HUDSON SQUARE
MULTI-LEVEL FLAGSHIP**

Where Soho, Tribeca,
& Hudson Square Converge

565

BROOME STREET

New Construction
Commercial Opportunity
DESIGNED BY RENZO PIANO



RENDERING

SIN VIN
COMMERCIAL REAL ESTATE & ADVISORY



565 Broome offers extraordinary visibility in unparalleled modern glass architecture

Ground Level
10,234
SQUARE FEET

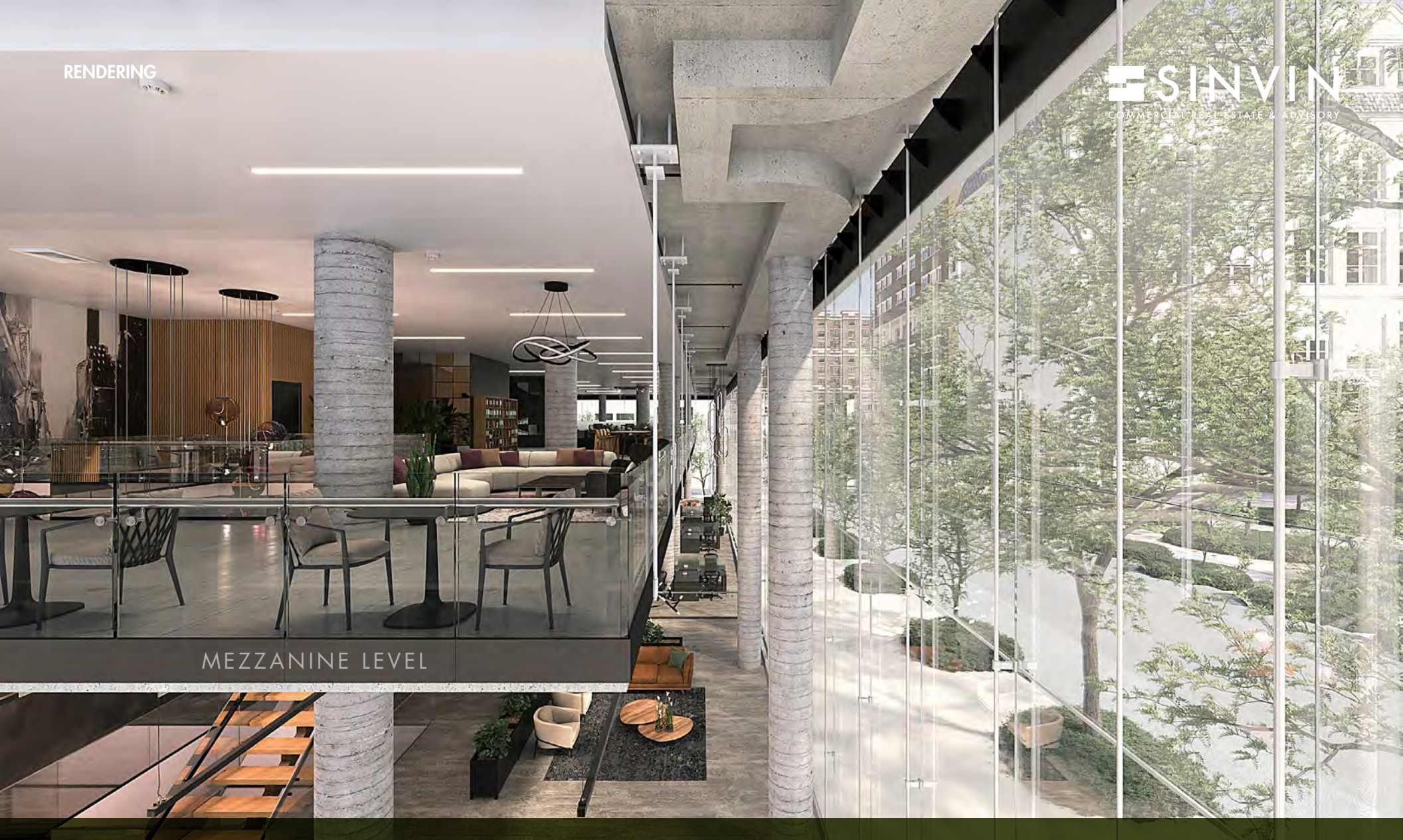
Mezzanine
7,903
SQUARE FEET

Lower Level
6,360
SQUARE FEET

Total
24,506
SQUARE FEET

RENDERING

SINVIN
COMMERCIAL REAL ESTATE & ADVISORY



MEZZANINE LEVEL

Frontage

325

FEET

Ceiling Height

15-30

FEET

Possession

IMMEDIATE

Asking Rent

INQUIRE

A LASTING IMPRESSION

The double height glass flagship sits next to the new residential development pending at 122 Varick, a block from the new New York Delano Hotel and 3 blocks from the new campus of Disney, ABC and ESPN.



\$344K

Average
Household
Income



37.1

Median
Age



52K

Residents
Within A Square
Mile



\$3.3M

Hudson Square
Median Condo
Price



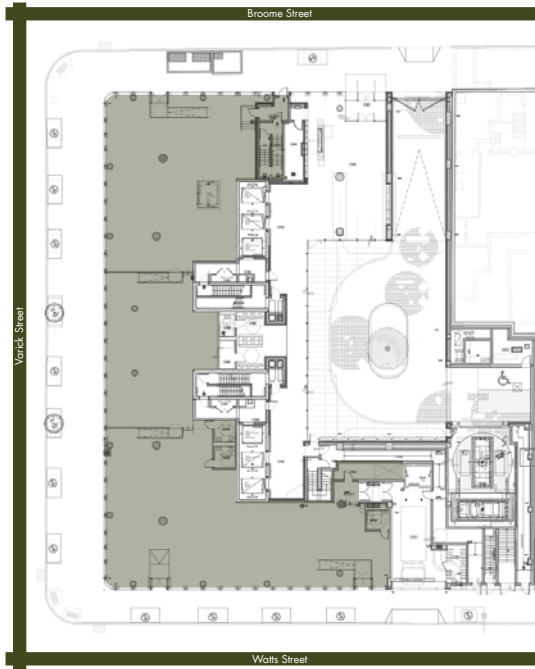
RENDERING

A UNIQUE LOCATION

Hudson Square has come into its own as a burgeoning neighborhood of creative brands and companies and rapid residential growth.

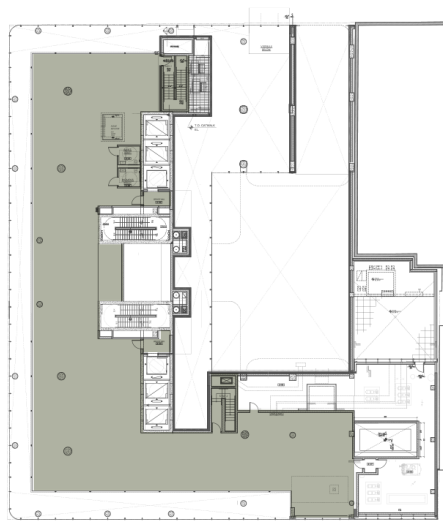
 **SINVIN**
COMMERCIAL REAL ESTATE & ADVISORY

GROUND LEVEL



Ceiling Height: **Up To 16' 7"**

MEZZANINE



Ceiling Height: **12' 6"**

LOWER LEVEL



Ceiling Height: **Up To 13'**

UNIT DETAILS

- Unparalleled visibility with wrap-around glass frontage
- Surrounded by some of the world's most innovative companies such as Google, Disney and Publicis
- Premises may be split and demised in reasonable configurations
- Vented
- ADA compliant
- Exceptional proximity to subways
- Total control with a customizable building-within-a-building experience

BUILDING DETAILS

- Floor-to-ceiling glass panels
- High traffic street
- Great neighborhood amenities
- Full of natural light
- Total control with a customizable building-within-a-building experience

565

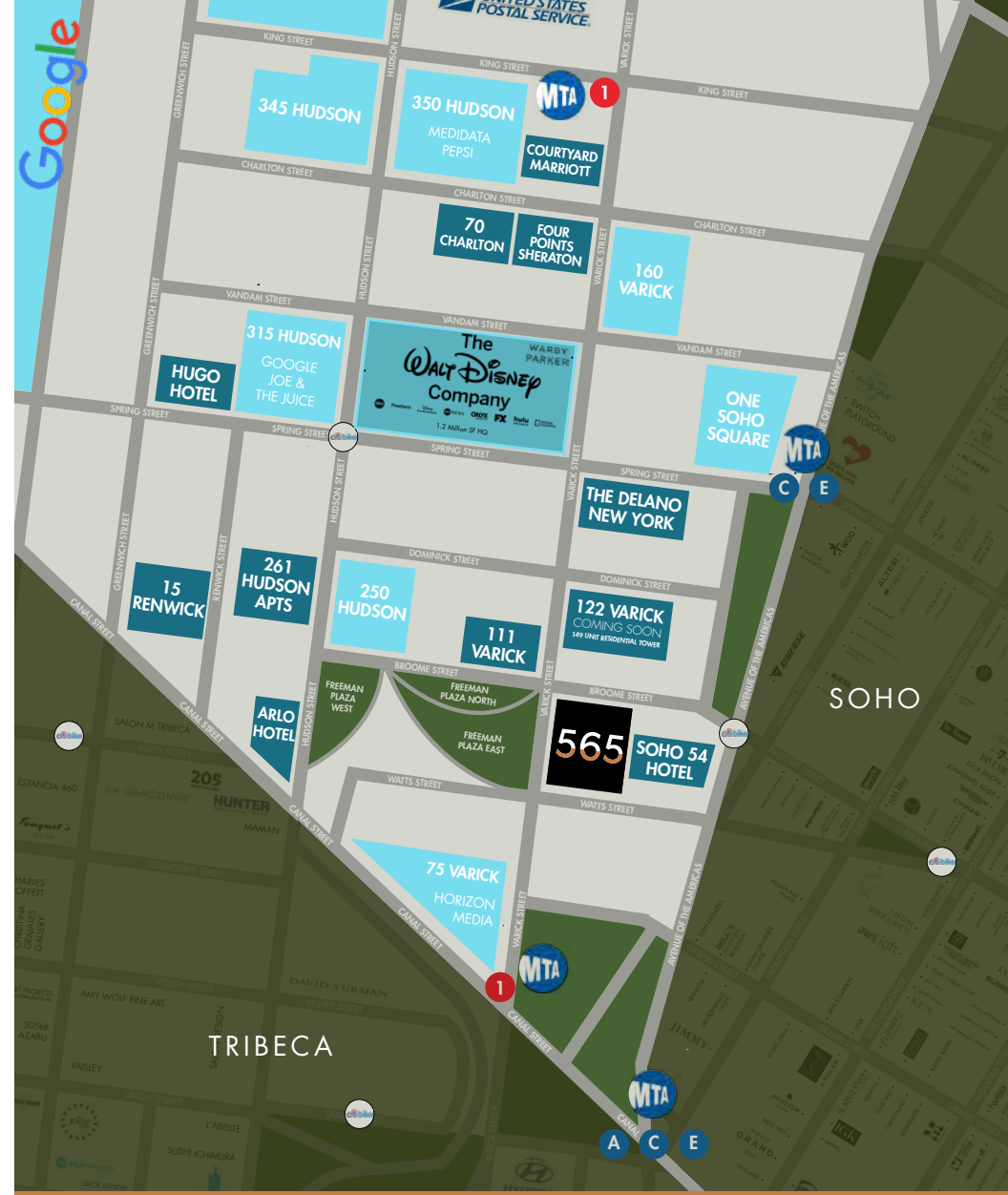
BROOME STREET

PHOTO

 **SIN VIN**
COMMERCIAL REAL ESTATE & ADVISORY



RETAIL NEIGHBORS



CORPORATE OFFICE, RESIDENTIAL, & HOTEL NEIGHBORS

565

BROOME STREET

VIRTUAL TOUR

PLEASE CONTACT

Michael Glanzberg
(212) 604-9004
michael@sinvin.com

Christopher Owles
(212) 604-9002
chris@sinvin.com

James Costello
(646) 599-2391
james@sinvin.com

 **SINVIN**
COMMERCIAL REAL ESTATE & ADVISORY